



◆ THE SEVEN ◆
DISTRICTS OF SIN

THE TAIL MAKES THE FOX
artbook

SPRITE #1

So, what did you name her? Did you leave it blank and let the game call her Lilim? If you're lazy like gamerbun, you probably did. BUT, there's no wrong way to do it. Name her Pancakes. Or Pickles, after your elderly cat.



SPRITE #2

The governess of the Kumonoito District, Anzu Za— What's the rest of her last name, you ask? Well, we can't tell you. But it's probably something like Zakarian. Aaaaand, now we're starting to get hungry.



SPRITE #3

Lord Gaki is a real wonder. We bet you don't believe he does anything with the prostitutes at the brothels. And maybe he doesn't, but that's a mystery we'll leave unresolved for the time being.



SPRITE #4

Kali is very tough despite her tiny stature. And she's older than most of the cast, too. Still, there has to be a good reason that Governess Anzu keeps her around, right? So what could it possibly be...? It's not for the love...



SPRITE #5

Do you think Saleos is cute? Or maybe he's weird? Either way, you're right. The biggest mystery surrounding him is that of the reason his mother abandoned him... but is that even interesting enough to get into? You tell us.



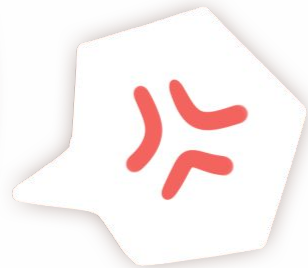
SPRITE #6

Do you ever feel like a plastic bag— Wait, we're not allowed to randomly recite Katy Perry lyrics from 2010? Well, shit. But Lucifer is kind of a firework. You know, in terms of their personality. Still not okay? Fine...



CHIBI CG #1

To accompany the game's humorous nature, we commissioned a number of chibi CGs. The first of these is in the game's prologue, featuring hellish Overlord Lucifer. Aren't they just the cutest little devil?



CHIBI CG #2

Gaki is just the most adorable, most mischievous kitsune ever. Well, he tends to get what he deserves, like in the below image. It's all right; you needn't feel bad for him. Sometimes karma really does its job.



CHIBI CG #3

Oh no! Sweetheart Kali is about to be covered in sammich! Whatever will she do if her lovely Governess Anzu catches her in such an embarrassing situation? Actually, this turned out so much cuter than we expected!



CHIBI CG #4

It looks like our dear protagonist, named Lilim by default, has come to the girl's rescue! ... Or something like that.
But really, aren't they just so cute together? Don't you want to... SHIP THEM, perhaps? Or...



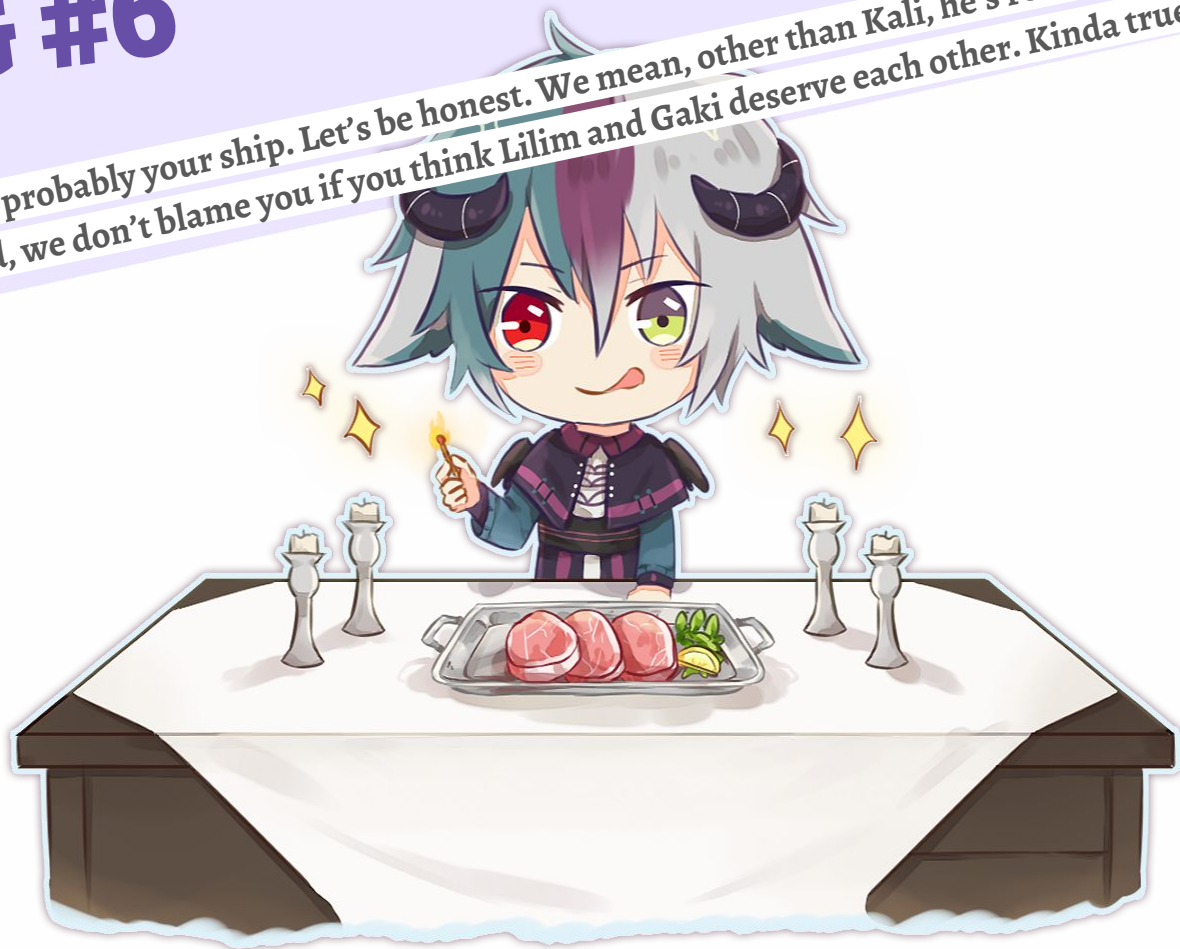
CHIBI CG #5

Perhaps this shipping is more up your alley. Or maybe it isn't! We don't know, because the truth is that we aren't the mind readers we wish we were. We can, however, say that gamerbum ships Anzu and Kali together...!



CHIBI CG #6

If you're not into yuri, this guy is probably your ship. Let's be honest. We mean, other than Kali, he's really the sweetest option, right? That said, we don't blame you if you think Lilim and Gaki deserve each other. Kinda true.



MAIN CG #1

For the game's title CG, we went with a melancholy feel, to represent how Lilim herself feels at the start. In contrast to all of the chibi CGs, which illustrate humorous scenes, the main CGs illustrate the more serious scenes.



MAIN CG #2

Okay, maybe not ALL of them are serious scenes. But most of them! This is the only exception, we swear! It's just that this particular scene holds a special place in gamerbum and pigiondeliver's shoujo hearts!



MAIN CG #3

Even though Kali is older, she looks like the younger sister-type. Isn't their dynamic just the cutest? Tsunderes aren't a team favorite, either, but Kali is just one of those characters who goes beyond the mold.



MAIN CG #4

Lilim just can't help but bring trouble wherever she goes. Poor Saleos seems to end up always taking the brunt of it. In a way, though, doesn't it make them a good potential couple? He's like her rock! ... Except for the hair thing.



MAIN CG #5

There are a lot of things going on in this image, but really, it's quite representative of Anzu and Lilim's relationship. There's anger, and resentment, and... something else that's a little sexual. What?!



ILLUST #1

Lilim. Oh, sweet Lilim. There's so much wrong with her, and yet, you can't help but somehow find her endearing. Unless you don't. In which case... you probably hate her. But, well, we hope that doesn't affect your enjoyment.



ILLUST #2

You've probably gotten curious about Lucifer at some point. And we're here to tell you that they're genderless.
Think some sort of transcendent being that the laws of biology don't apply to. Why? WHY NOT.



ILLUST #3

Gaki... what is his actual name? Uhh... Oh, he totally has an actual name that we just haven't revealed yet. We just, uh, can't tell you until Episode 2 is out. We're definitely NOT making excuses because we haven't decided yet.



ILLUST #4

Saleos is kind of a weirdo. He looks weird, he acts weird. He just IS weird. But he's kinda cute, right? And he has a very appealing voice. It's all right if he thinks you're a walking steak as long as he loves you, right?



ILLUST #5

Here's a question we bet you never considered asking: who's older, Kali or Anzu? Well, you probably didn't ask because the answer was obvious. It's Anzu, of course. By the way, Kali is an excellent singer.



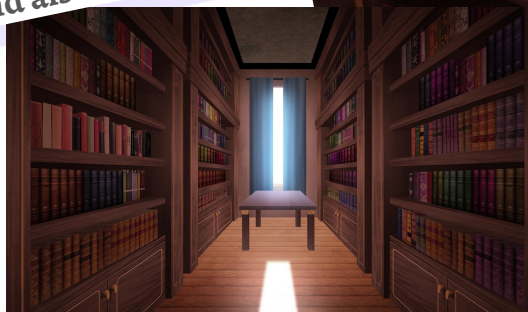
ILLUST #6

What's that? You want to punch us in the throats because Anzu didn't get enough romance-like scenes? Well, we really can't blame you for that. But hey, all we can say is that we hope the wait will be worth it.



BG #1

Do you feel slightly claustrophobic while looking at the archives? Because you should. That's what we were going for. And also cool-looking!



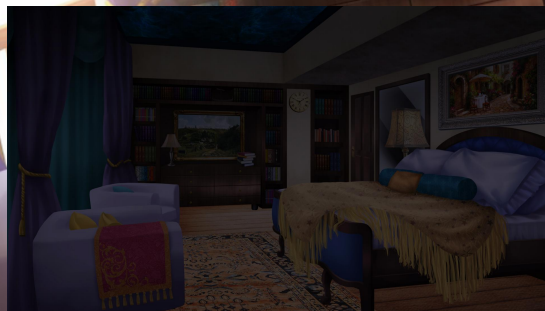
BG #2

The guest bedroom of Kumonoito Palace is pretty much what you'd expect from a Victorian-style hotel, for example. But, in comparison to the rest of the mansion, it looks a bit simple. It's, ironically, more home-y.



BG #3

Anzu's bedroom is a sacred place for her, although she doesn't spend much time in it. She'd rather be working in her office or wandering throughout the palace.



BG #4

The exterior of Kumonoito Palace was loosely inspired by the Topkapi Palace in Turkey. We made sure the greenery was reminiscent of Japan, however, to tie it in with the rest of the district's exterior areas.



BG #5

The dining room was a difficult area to balance, but we ended up having the room's architecture match the rest of the mansion, while the actual dining area (table, seats) was Japanese-inspired.



BG #6

It's the old service hallway! It's supposed to feel outdated compared to everything else and be very simple. What do you think? Did you get that feeling from looking at it?



BG #7

The upstairs hallway is one of the lesser used areas, but it's definitely in there. You can get to Anzu's bedroom from here! Kali's is also in this hall... but whether or not she uses it is still up for debate.



BG #8

The main office of Kumonoito Palace! One of our favorite backgrounds in the game. It features an octopus chandelier and a stunning portrait of Kali. Doesn't she look cute? It's the BG artist's rendition~.



BG #9

It's the dusty old office!!! Why are we so excited? We're not, really. But there's just not anything interesting to say about this place. It is what it is; nothing more, nothing less. Woohoo!



BG #10

Lilim's workplace! Have you managed to see it in-game yet? It's in a few of the endings. By the way, if you hadn't guessed already, the game is actually set in modern times. The Kumonoito District is just old fashioned by culture.



BG #11

The streets of Kumonoito are really just what you should expect from the name. Which, by the way, translates to “spider silk”. And yes, all of the districts are based on certain specific cultures from around the world.



BG #12

The streets of the main Hell district! And, in case you're wondering, it doesn't actually have its own name, or anything like that. It's like a neutral area that's free from district-specific politics.



BG #13

Lucifer's throne room is easily the coolest area in the game. Look at that badass chair. The room's even stocked with lots of pots and vases in case a certain hero in a green tunic comes by to visit.



Artists:

Veronica Amado - original character designs

holikrep / kurophe - sprites

Renmiou - main CGs

Toxicmilkk - chibi CGs

LoiLoiChan - bonus illustrations

gin-1994 - backgrounds

Thank you for supporting us!

We hope you've enjoyed the game and that this little artbook has somehow enhanced your experience.

More than that, we hope you'll follow Lilim and the staff of Kumonoito to the end of their journey once Episode 2 is released.

We know that'd make them all so happy!