

by **SPLENDIDLAND**

# apple quest

## MONSTERS

DX



Monster Manual

# apple quest

MONSTERS



— LET'S GO! —

## CONTENTS

Introduction-----	pg. 01
World Map-----	pg. 03
Monster Fight-----	pg. 05
Monsters 01-42----	pg. 07
Intermission-----	pg. 49
Monsters 43-85----	pg. 55
Ending-----	pg. 101

## INTRODUCTION

Welcome to Apple Quest Monsters, a collection of 80+ monsters from an RPG that doesn't exist.

I was inspired to make this from my childhood love of reading guides for games I never played.

I spent a lot of time and love on every monster, so I hope you enjoy reading them!

-splendidland

## " " GAMEPLAY " "

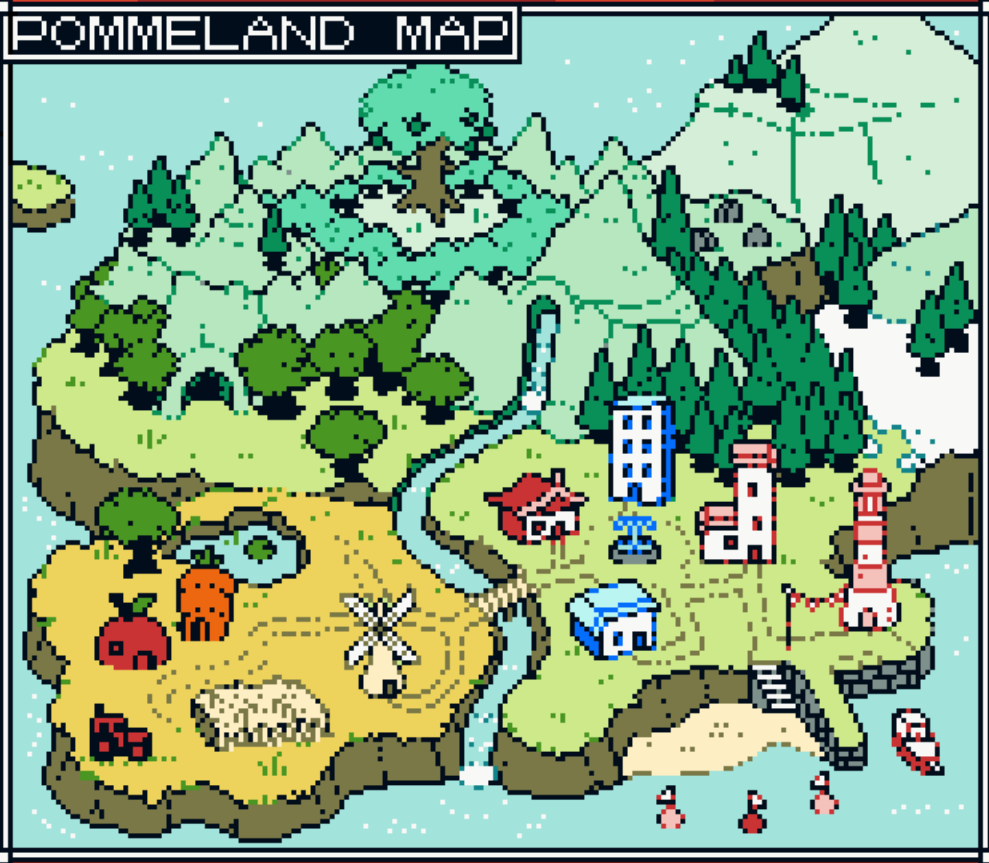
Every monster has a Star Rating, you can put any monster on your team, including boss monsters, but their total stars mustn't exceed 9..



..But heck, this ain't a real Video Game, so just go hog wild and have fun.

Who will you put on your team?

# POMMELAND MAP





Oh dear, these monsters  
are having a fight.

That's scary, so let's  
leave 'em to it and get  
outta here.

Lv. 2

SLIME

HP 



Lv. 4

SKELETON

HP 



SKELETON USED BONE WALLOP



# BESTIARY

NO: 01: APPLE WARRIOR



TYPE: NATURE  
HABITAT: FARM  
ATTACK: APPLE BLADE



A PLUCKY KNIGHT WHO HAS ARRIVED TO HELP YOU ON YOUR ADVENTURE, HE'S NOT VERY STRONG, BUT HIS EAGERNESS FILLS YOU WITH CONFIDENCE.

HE WANTS TO ENTER THE HOLY ORCHARD TO BECOME MORE POWERFUL.

NO: 02: SLIME



TYPE: BEAST

HABITAT: GRASSLAND

ATTACK: TACKLE



THIS BEAST'S BODY  
BECAME AMORPHOUS BECAUSE  
IT HAS NO CLEAR GOALS  
AND DOESN'T KNOW WHAT TO  
DO WITH ITS LIFE.

IT'S THE WEAKEST OF ALL  
MONSTERS BUT DON'T LET  
THAT STOP YOU FROM  
LOVING IT.

NO: 03: EARTHWORM



TYPE: NATURE

HABITAT: GRASSLAND

ATTACK: BURROW



DIGGING IS THE PASSION OF THIS MONSTER, IT TUNNELS THROUGH THE EARTH AND EATS MUD.

IT ALWAYS MOVES FORWARD BECAUSE ITS PAST IS FULL OF SHAME AND REGRET.

NO: 04: BATTY



TYPE: BEAST  
HABITAT: CAVE  
ATTACK: SWOOP



FRAIL BEAST THAT GETS  
PUSHED AROUND BY WIND,  
IT WRAPS ITS LONG TAIL  
AROUND ANYTHING IT CAN  
FIND TO PREVENT IT FROM  
BEING BLOWN AWAY.

IT MOVED TO THE CAVE TO  
AVOID WIND, BUT IT'S  
AFRAID OF THE DARK.

NO: 05: CARROT WARRIOR



TYPE: NATURE

HABITAT: FARM

ATTACK: C-SPEAR



RIVAL TO APPLE WARRIOR,  
HE TAKES HIS JOB VERY  
SERIOUSLY AND MOST  
PEOPLE CONSIDER HIM TO  
BE A JERK.

HE BELIEVES THAT HE IS  
THE STRONGEST WARRIOR,  
BECAUSE OF THE VITAMINS  
IN HIS BODY.

NO: 06: ZOMBIE



TYPE: UNDEAD

HABITAT: GRASSLAND

ATTACK: ROTTEN BITE



A KIND OF GHOST WHO HAS NEVER KNOWN A LIFE OUTSIDE OF THEIR BODY, AND IS WORKING UP THE COURAGE TO FINALLY LEAVE IT BEHIND.

THEY'RE DEEPLY DYSPHORIC ABOUT THE APPEARANCE OF THEIR ROTTING VISAGE.

NO: 07: SWIMMING FISH



TYPE: BEAST

HABITAT: AQUATIC

ATTACK: SPIT



A FISH WHO EVOLVED LEGS  
AND ARMS.

THESE LIMBS AREN'T VERY  
EFFICIENT AT SWIMMING,  
SO IT'S ONLY ABLE TO  
PADDLE AROUND, BUT IF  
YOU'VE EVER WANTED TO  
HUG A FISH, THEN THIS IS  
YOUR CHANCE.

NO: 08: SKELETON



TYPE: UNDEAD

HABITAT: FOREST

ATTACK: BONE WALLOP



A PILE OF DUSTY OLD BONES THAT WANDERS THE EARTH WITH A NOSTALGIC SOMBER MOOD.

THEY GET OVERWHELMED BY MODERN LIFE, BUT THEY LOVE WATCHING THE SAME OLD TIMEY BLACK AND WHITE MOVIES OVER AND OVER.

NO: 09: WANDERING PINE



TYPE: NATURE

HABITAT: FOREST

ATTACK: PINE NEEDLE



A TREE THAT UPROOTED  
ITSELF AND GAINED  
CONSCIOUSNESS. IT CREEPS  
AROUND THE FOREST AND  
EATS BIRDS.

DESPITE ITS LUMBERING  
APPEARANCE, IT HAS A MAX  
RUNNING SPEED OF 30 MPH.

NO: 10: NORMAL BIRD



TYPE: BEAST

HABITAT: MOUNTAIN

ATTACK: BEAK



EVER SINCE IT BECAME A BIRD, PEOPLE HAVE COMMENTED HOW MUCH MORE CONFIDENCE IT HAS.

IT ATE 400 BIRDS TO ACHIEVE THIS FORM.

NO: 11: LESSER IMP



TYPE: DEMON

HABITAT: GRASSLAND

ATTACK: POKE N' PROD



EVEN AMONGST IMPS, THIS DEMON IS TINY, BUT THAT JUST MEANS ITS EVIL IS MORE COMPACT.

ITS DEMONIC POWER CAUSES PEOPLE TO FORGET TO BRUSH THEIR TEETH AND PUT ON DEODORANT.

NO: 12: GHOUL



TYPE: UNDEAD

HABITAT: CAVE

ATTACK: EERIE HOWL



COMPLETELY DEAD, BUT  
REMAINS ALIVE THROUGH  
SHEER WILLPOWER.

BECAUSE OF THIS, IT'S  
COMPLETELY IMPOSSIBLE TO  
CHANGE A GHOUL'S MIND ON  
ANYTHING.

NO: 13: FIREFLY



TYPE: ELEMENTAL  
HABITAT: FOREST  
ATTACK: ARSON



ONE DAY, THE EARTH SHALL  
BE CLEANSSED WITH FLAMES,  
AND ALL TRACES OF LIFE  
WILL BE ANNIHILATED.

THIS IS THE AMBITIOUS  
DREAM OF THIS PIXIE, WHO  
STANDS AT A HEIGHT OF  
2 INCHES.

NO: 14: PSYCHIC MUSHROOM



TYPE: NATURE  
HABITAT: CAVE  
ATTACK: BRAIN SPORE



STANDS COMPLETELY  
MOTIONLESS, STARING  
BLANKLY AT EVERYTHING.

THIS IS BECAUSE IT KNOWS  
THE FUTURE, AND ALL THE  
WAYS THAT IT COULD  
POSSIBLY DIE.

NO: 15: GREEN LION



TYPE: BEAST

HABITAT: FOREST

ATTACK: MAGIC ROAR



SAID TO BE A FOLIAGE  
DEITY THAT TAKES THE  
FORM OF A BEAST WITH A  
BEAUTIFUL FACE, WHOSE  
PRESENCE IS A SIGN OF A  
PLENTIFUL HARVEST.

NONE OF THIS IS TRUE,  
BUT IT LOVES TO HEAR THE  
STORIES PEOPLE TELL.

NO: 16: SCUZZ-E-FLY



TYPE: NATURE  
HABITAT: URBAN  
ATTACK: ACID SLURP



THE TEXTURE OF ITS HAIRY BODY... THE ONLY WORD TO DESCRIBE IT IS "GREASY".

IT HARBOURS EVERY SINGLE GERM IN THE WORLD, WHICH ARE LOCKED IN ETERNAL COMBAT.

NO: 17: KAPPA



TYPE: DEMON

HABITAT: AQUATIC

ATTACK: KIDNAP



IT HANGS OUT NEAR LAKES  
AND STEALS AWAY ANYONE  
WHO CAUSES POLLUTION.

IT FORCES ITS VICTIMS TO  
SIT WITH ITS SICK MOTHER  
FOR AN ENTIRE WEEK, SO  
THAT THEY CAN SEE WHO  
THEY ARE HURTING FACE TO  
FACE.

NO: 18: MIMIC



TYPE: PUPPET

HABITAT: CAVE

ATTACK: TREASURE



BECAUSE ITS HEAD IS A  
TREASURE CHEST, PEOPLE  
WHO PASS BY THIS MONSTER  
THINK IT'S OKAY TO TAKE  
ITEMS FROM IT.

BECAUSE OF THIS,  
EVERYTHING IT HAS EVER  
OWNED HAS BEEN TAKEN.

NO: 19: GOBLIN LOU



TYPE: DEMON

HABITAT: URBAN

ATTACK: CHEW GUM



HE DID SO BADLY IN SCHOOL THAT HIS TEACHERS GAVE UP ON HIM, SO HE IS CONVINCED THAT HE DOESN'T MATTER.

HE HAS A SUPPORTIVE BOYFRIEND WHO IS HELPING HIM MAKE HIS LIFE BETTER THOUGH.

NO: 20: CHIMERA



**BOSS**

TYPE: BEAST

ATTACK:

VICIOUS TUMBLE



IT ONLY BECAME A "BOSS"  
BECAUSE OF ITS SIZE, BUT  
IT DOESN'T FEEL VERY  
CONFIDENT IN ITS  
POSITION.

NEITHER FACE IS AWARE OF  
EACH OTHERS PRESENCE.

NO: 21: CACTUS BOY



TYPE: NATURE

HABITAT: DESERT

ATTACK: PUNCTURE



A MONSTER WHO WAS BORN  
IN A CACTUS PATCH, YEARS  
OF BEING SCRATCHED BY  
THORNS MADE IT TOUGH.

LIVING A PAINFUL LIFE  
MEANS IT LONGS FOR LOVE,  
BUT ITS PRICKLY HEAD  
MEANS ANYONE WHO GETS  
CLOSE WILL BE INJURED.

NO: 22: BUSY DRIVER



TYPE: PUPPET  
HABITAT: URBAN  
ATTACK: CRASH



"BRUMMM BRUMMM... WOW...  
ISN'T MY NEW CAR SO  
COOL? I CAN'T WAIT TO  
DRIVE IT AROUND ALL OVER  
TOWN AND MAKE LOADS OF  
NOISE.

"UGH. HEY, YOU IN FRONT,  
SOME OF US HAVE PLACES  
TO BE! GET A MOVE ON!"

NO: 23: TSUCHINOKO



TYPE: BEAST

HABITAT: DESERT

ATTACK: CURL UP



SIGHTINGS OF THIS LITTLE SERPENT ARE RARE BECAUSE IT PREFERS TO KEEP TO ITSELF AND LACKS SELF CONFIDENCE.

MAYBE IF IT KNEW HOW MUCH EVERYONE LOVED IT, IT WOULD BE MORE COMMON.

NO: 24: SNOWMAN BEETLE



TYPE: NATURE

HABITAT: TUNDRA

ATTACK: ROLL OVER



A PECULIAR INSECT THAT SITS ATOP A SNOWBALL AND SCURRIES AROUND TO STAY ATOP AS IT ROLLS AROUND.

THEIR GRAND DREAM IN LIFE IS TO ROLL A SNOWBALL SO BIG THAT IT CAN DEFEAT AND REPLACE THE MOON.

NO: 25: TSUNAMI TSLUG



TYPE: ELEMENTAL  
HABITAT: AQUATIC  
ATTACK: TIDAL WAVE



A MOLLUSK WITH A BODY  
MADE OUT OF SEAWATER, IT  
CAME TO LIFE ONE NIGHT  
AFTER A SPECIAL MOONBEAM  
HIT THE OCEAN.

IT LURKS IN HARBOURS AND  
EATS BOATS AND SEAGULLS  
BECAUSE IT'S IMMORAL.

NO: 26: ECTOPLASM HEAP



TYPE: UNDEAD

HABITAT: HOUSE

ATTACK: GHOST GOO



THE MORE GHOSTS FORGET ABOUT THEIR PREVIOUS LIVES, THE MORE THEIR FORMS DETERIORATE.

THEIR BODIES NOW LACKING BOUNDARIES HAVE FUSED TOGETHER, AND EVENTUALLY THEY WILL DISSOLVE INTO MIST AND BECOME CLOUDS.

NO: 27: LUNAR MOTH



TYPE: NATURE

HABITAT: MOON

ATTACK: MOON POWDER



IT DRINKS A MYSTERIOUS  
NECTAR THAT POOLS UP IN  
CRATERS, IT DOESN'T MIND  
IF YOU TAKE SOME FOR  
YOURSELF BUT PLEASE BE  
CONSIDERATE.

THE SHINING SCALES THAT  
DROP FROM ITS WINGS  
DRIFT INTO SPACE AND  
EVENTUALLY BECOME STARS.

NO: 28: MUMMY



TYPE: UNDEAD  
HABITAT: DESERT  
ATTACK: CURSE



IN LIFE, THEY WORRIED SO MUCH ABOUT THEIR BODY ROTTING AWAY THAT THEY ENSURED IT WOULD BE PRESERVED FOREVER.

NOW THEIR BODY IS A TOMB THAT THEIR GHOST CANNOT ESCAPE FROM.

NO: 29: TENGU



TYPE: DEMON

HABITAT: FOREST

ATTACK: NOSE BONK



A CROW DEMON WHO TRIES TO FOOL TRESPASSERS OF THE FOREST WITH RIDDLES AND TRICKS.

AS IT IS EASILY CONFUSED AND OVERWHELMED, THIS USUALLY ENDS WITH THE TENGU ITSELF BEING TRICKED.

NO: 30: GRIEVER



TYPE: UNDEAD

HABITAT: MOUNTAIN

ATTACK: TOMB STONE



THERE WAS A FUNERAL THAT WAS SO SAD THAT THE GRAVESTONE CAME TO LIFE, HAUNTING THE CEMETARY AND CRYING EVER SINCE.

THE FAMILY OF THE DECEASED ARE RATHER DISTURBED BY THIS.

NO: 31: BOOGIE CHURCH



# BOSS

TYPE: UNDEAD

ATTACK:

HYMN OF BLOOD



WHEN THIS ANCIENT GHOST  
IMITATED A CHURCH, IT  
WASN'T ENTIRELY SURE  
WHAT A "PIPE ORGAN" WAS.

PROBABLY BEST NOT TO  
LOOK INSIDE.

NO: 32: DEVIL DOLL



TYPE: PUPPET  
HABITAT: FOREST  
ATTACK: KNIFE



IT OUTLIVED THE LITTLE  
BOY WHO CHERISHED IT.

AFTER A PERIOD OF GRIEF,  
IT SOON REALIZED THAT IT  
COULD FINALLY PARTAKE IN  
ITS EVIL DESIRES, NO  
LONGER BOUND TO ITS  
OWNER.

NO: 33: THREE MAN



TYPE: ELEMENTAL

HABITAT: ???

ATTACK: 3-BEAM



A NUMERICAL ENTITY, IT HAS A GREAT PASSION FOR MATHEMATICS.

IT HAS A MAGICAL BODY THAT WILL TAKE THE FORM OF THE HIGHEST NUMBER THAT IT CURRENTLY KNOWS.

NO: 34: TRIPLE DUCKS



TYPE: PUPPET  
HABITAT: AQUATIC  
ATTACK: AMBUSH



A GANG OF RUBBER DUCKS,  
THEIR NAMES ARE JEREMIAH,  
HORACE, AND LIL' PUDDLE.

ONE DAY, JEREMIAH  
DISCOVERED THE "EVIL  
HELMET OF HUMANITY", AND  
LEAD THE GROUP DOWN A  
ROTTEN PATH.

NO: 35: FROST PIG



TYPE: BEAST

HABITAT: TUNDRA

ATTACK: MIST SPRAY



IT CAN SURVIVE AT ALMOST ANY TEMPERATURE, IT KEEPS CHALLENGING ITSELF TO SEE HOW LOW IT CAN GO.

IT ONCE REACHED A RECORD  $-2730^{\circ}\text{C}$ , WHERE EVEN TIME MOLECULES STOPPED MOVING, AND IT SAW ITSELF BEING BORN AND DYING AT THE SAME TIME.

NO: 36: MOON UNIT-08



TYPE: PUPPET

HABITAT: MOON

ATTACK: LASER SCAN



A ROBOT WHO WAS SENT TO SURVEY DIFFERENT KINDS OF MOON ROCK, IT'S VERY FIXATED ON THIS SUBJECT AND CAN TALK FOR HOURS ABOUT IT.

IT IS FULL OF ANXIETY ABOUT IF IT IS SHARING TOO MUCH INFORMATION.

NO: 37: RAT KING



TYPE: BEAST

HABITAT: URBAN

ATTACK: GARBAGE



GIANT RAT WHO LIVES IN A RUBBISH BIN, IT HAS LOFTY AMBITIONS BUT ITS IDEAS NEVER SEEM TO GO ANYWHERE.

IT LIVES THE LIFE OF A HEDONIST BUT FEELS CONFLICTED ABOUT IT.

NO: 38: BRASS HORSE



TYPE: PUPPET

HABITAT: ???

ATTACK: TOOT TOOT



A MYSTERIOUS MUSICAL INSTRUMENT THAT PLAYS A UNIQUE SOUND THAT COULD BE DESCRIBED AS LIKE AN "ELECTRONIC TURKEY".

IT'S QUITE AGGRESSIVE, SO SUCCESSFULLY PLAYING IT IS ITS OWN CHALLENGE.

NO: 39: VAMPIRE



TYPE: UNDEAD

HABITAT: URBAN

ATTACK: BLOOD FANGS



IT ATTACHES ITSELF TO THE BELLY OF LARGE ANIMALS SUCH AS HORSES, AND OFTEN FALLS ASLEEP WHILE FEEDING ON THEIR BLOOD.

DURING SUMMER, PEOPLE SLEEP UNDER VAMPIRE PROOF NETS.

NO: 40: TUMBLEWEIRD



TYPE: NATURE

HABITAT: MOUNTAIN

ATTACK: ROLLING



IT CAN'T MOVE VERY WELL BY ITSELF, SO IT LETS THE WIND BLOW IT HITHER AND TITHER.

ITS PERSONALITY IS ANYTHING BUT CAREFREE, IT CONSTANTLY WORRIES IT WILL BE BLOWN INTO A VOLCANO.

NO: 41: POWER BEETLES



**BOSS**

TYPE: NATURE

ATTACK:

DOUBLE SUPLEX



A PAIR OF BEETLE WOMEN WHO LOVE EACH OTHER VERY MUCH AND CAN ACCOMPLISH ANYTHING TOGETHER.

THEY ALWAYS COMPLIMENT EACH OTHER TO BOOST THEIR SELF ESTEEM.

NO: 42: FRUIT OF EVIL



TYPE: DEMON

HABITAT: ???

ATTACK: DEATH AURA



A FRUIT THAT GREW ON A TREE IN HELL, IT'S VERY OBVIOUSLY POISONOUS, AND THOSE EYEBALLS CAN'T BE PLEASANT TO BITE INTO, WHO WOULD EVER EAT THIS?

MORE PEOPLE THAN YOU'D THINK, ACTUALLY, AS IT PROMISES GREAT POWER TO WHOEVER EATS IT.

Phew... That was a lot of  
Monsters!

I think we should sit  
down for a bit, I'm not  
feeling too well...

Let's check out the town!



# INTERMISSION



Ooooh... I'm the  
Elder of Omena  
Town, Welcome!..

Hehe... I have  
few duties now,  
so I can play  
all the video  
games I want!..

My music isn't  
the best, but  
I'm having fun.

As long as you  
are enjoying  
what you do,  
it's not a  
waste of time.





Ohh... I can't stop thinking about the ORCHARD GUARDIAN!

He's a 7-star monster, the strongest in all of Pommeland!

He protects the HOLY ORCHARD and he's such a hunk too...

Guhuhuhu..! I'm  
Wizard Plum..!

I keep making  
monstrosities  
and nightmares  
because of my  
loneliness..!  
Guhuhuhu..!!!



I'll trade my  
BATTY for your  
WANDERING PINE?

I think BATTY  
loves you a  
lot, trading  
him away might  
upset him.



Physically strong monsters are my favourite!

My girlfriend prefers emotional strength.

Yeah... Even if APPLE WARRIOR isn't strong, I think he's a nice person.

Oh, I'm just a fisherman, I haven't much to say.



Well, there's still so many monsters to see!

Monsters that are all definitely stronger than me...

Shall we head off?





# BESTIARY

## PART 2

NO: 43: VIRUS EGG



TYPE: ???

HABITAT: ???

ATTACK: DNA-DRILL



IT IS LOOKING FOR WHAT  
IT THINKS IS THE COOLEST  
MONSTER.

IF IT FINDS ONE IT LIKES,  
IT STEALS A DNA SAMPLE  
WITH ITS DRILL, AND THE  
EGG WILL HATCH INTO  
ITS NEW FORM.

NO: 44: WINTER FLU



TYPE: ELEMENTAL  
HABITAT: TUNDRA  
ATTACK: COLD GERM



YEARS OF TERRIBLE  
HYGIENE FINALLY CAUGHT  
UP WITH HIM, AND HE  
BECAME SO ILL THAT HE  
HIMSELF IS NOW ONE BIG  
GERM.

PLEASE REMEMBER TO WASH  
YOUR HANDS.

NO: 45: MONSTER MEAL



TYPE: DEMON

HABITAT: RESTAURANT

ATTACK: BURGER BITE



A LIVING BURGER THAT BITES BACK, IF YOU PRESS YOUR HANDS AGAINST THE BUNS, YOU CAN FEEL A HEARTBEAT.

COMES WITH A SIDE ORDER OF FRIGHTS AND A DIE-T COLA.

NO: 46: KARAKASA



TYPE: DEMON

HABITAT: DESERT

ATTACK: ENGULF



A PARASOL THAT CAME TO  
LIFE BECAUSE IT HAD  
HARBOURED EVIL AMBITIONS.

IT FLIES AROUND  
OFFERING SHELTER FOR  
TRAVELERS SUFFERING FROM  
HEATSTROKE AND THEN EATS  
THEM WHOLE.

NO: 47: LOST ASTRONAUT



TYPE: UNDEAD

HABITAT: MOON

ATTACK: ASTRO DRIFT



IT APPEARED ONE DAY TO  
CURSE THE ENGINEERS WHO  
IT BLAMED FOR ITS DEATH.

UNFORTUNATELY, IT SHOWED  
UP AT THE WRONG PLACE,  
WHICH WAS QUITE AWKWARD  
AT FIRST, BUT IT WAS  
SHOWN COMPASSION AND  
KINDNESS.

NO: 48: MOBILE FRIDGE



TYPE: PUPPET

HABITAT: TUNDRA

ATTACK: FREEZE SKI



IT USES ITS ICE SKATES TO TRAVEL THE SNOWY WASTES, GIVING OUT FOOD TO PEOPLE IN NEED.

IT INFILTRATES THE HOMES OF THE WEALTHY TO STOCK UP ON SUPPLIES WHEN IT RUNS OUT.

NO: 49: DUST DEVIL



TYPE: ELEMENTAL  
HABITAT: DESERT  
ATTACK: TORNADO



IT SPENDS MOST OF ITS  
TIME PARTIALLY BURIED IN  
SAND.

IF IT THINKS ABOUT  
SOMETHING IT DISLIKES,  
IT WILL STIR UP A  
TORNADO AND SPIN AROUND  
VIOLENTLY UNTIL ITS HEAD  
IS CLEAR.

NO: 50: SEA SHAMBLER



TYPE: NATURE

HABITAT: AQUATIC

ATTACK: SEAWEED



A SEA HAG WHOSE DESIRE  
TO LEARN ABOUT  
EVERYTHING CAUSES IT TO  
PICK UP EVERYTHING IT  
FINDS.

IF YOU REACH INTO ITS  
SEAWEED COVERED BODY,  
YOU'LL FIND AN ITEM YOU  
LOST AS A CHILD.

NO: 51: MOTH MAN



TYPE: DEMON

HABITAT: FOREST

ATTACK: SWOOP DOWN



THEY GLIDE AROUND THE WOODS, HOPING TO SCARE PEOPLE AWAY, BUT THIS HAS ONLY BROUGHT MEDIA ATTENTION TO THEIR TERRITORY.

THEY'RE VERY GENTLE AND SHY, SO ALL THIS ATTENTION IS VERY OVERWHELMING.

NO: 52: MOCHI BUN



TYPE: BEAST

HABITAT: MOON

ATTACK: HAMMER



THE PET RABBIT OF A MOON PRINCESS, SHE LEFT IT BEHIND WHEN SHE WENT TO THE EARTH.

MISSING ITS OWNER, IT HAMMERED ITS OWN IMAGE INTO THE MOONS SURFACE, TO REMIND HER TO COME HOME ONE DAY.

NO: 53: FURIOUS STORM



TYPE: ELEMENTAL  
HABITAT: MOUNTAIN  
ATTACK: LIGHTNING



ONE DAY, A CHILD WHO  
LET GO OF THEIR BALLOON  
SUDDENLY GAINED THE  
POWER TO FLOAT TO  
RETRIEVE IT, BUT NEVER  
CAME BACK DOWN.

THAT'S BECAUSE THEY WERE  
EATEN BY FURIOUS STORM.

NO: 54: HAUNTED PAINTING



TYPE: UNDEAD

HABITAT: HOUSE

ATTACK: ABSTRACTION



AN ARTIST WHO WORRIED ABOUT HOW THEY WOULD BE REMEMBERED AFTER DEATH LITERALLY POURED THEIR HEART INTO THEIR FINAL MASTERPIECE.

THE RED IN THE PAINT IS ESPECIALLY VIVID. 9/10.

NO: 55: DOGU COMMANDER



## BOSS

TYPE: PUPPET

ATTACK:

DOGU ONSLAUGHT



ANCIENT FIGURE WHO WAS  
FOUND BROKEN INTO PIECES.

NOW THAT IT'S BACK  
TOGETHER, IT WANTS TO  
DESTROY EVERYTHING, TO  
SHARE ITS PAIN.

NO: 56: POLTERGEIST



TYPE: UNDEAD

HABITAT: HOUSE

ATTACK: TANTRUM



THE SPIRIT OF A BRATTY CHILD WHO MAKES ITS PRESENCE KNOWN BY BY THROWING FURNITURE AROUND.

FUN FACT: AROUND 25% OF ALL BIRDS ARE ACTUALLY DEAD, AND ARE JUST PUPPETEERED BY A POLTERGEIST.

NO: 57: RPG KNIGHT



TYPE: ELEMENTAL

HABITAT: URBAN

ATTACK: SWORD



THE HEROINE OF THE HIT  
RPG "CRYSTAL AXE IV:  
BOOBY'S ATTACK", WHO  
EMERGED FROM A MAGIC  
VIDEO GAME CONSOLE.

FILLED WITH A SIMPLISTIC  
DESIRE TO "GRIND", SHE  
HAS FOUND WORK AT THE  
LOCAL FLOUR MILL.

NO: ?? : MR. ENIGMA



TYPE: ???

HABITAT: ???

ATTACK: ???



UGH. WHO IS THIS GUY?

SOMEONE GET HIM OUT OF  
HERE PLEASE.

NO: 58: FROG STACK



TYPE: BEAST

HABITAT: POND

ATTACK: RIBBIT

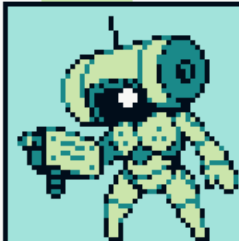


THREE LITTLE FROG  
BUDDIES, THEY LOVE TO  
RELAX AND TAKE CARE OF  
EACH OTHER.

THINKIN' ABOUT LITTLE  
GUYS LIKE THAT BEIN'  
GOOD TO ONE ANOTHER...

WE HAVE SO MUCH TO LEARN  
FROM FROGS.

NO: 59: SCOUT ROBOT



TYPE: PUPPET

HABITAT: GRASSLAND

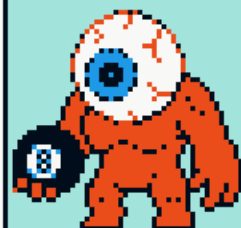
ATTACK: ASSAULT GUN



THE LAST UNIT FROM AN ARMY OF ROBOTS THAT WERE ALL DESTROYED LONG AGO, IT TREKS ACROSS FIELDS WITHOUT PURPOSE.

IT EATS PINECONES TO FUEL ITSELF AND LIKES TO OBSERVE NATURE.

NO: 60: CYCLOPS



TYPE: DEMON

HABITAT: MOUNTAIN

ATTACK: BOWLING EYE



BECAUSE IT HAS TROUBLE  
RELATING TO ANYONE, IT  
OBSESSES OVER ANYTHING  
THAT HAS A ROUND SHAPE.

THE 8-BALL IT CARRIES IS  
ITS MOST CHERISHED ITEM,  
BUT IT ALSO HAS A  
COLLECTION OF MARBLES  
AND BOULDERS.

NO: 61: SHATTERED FACE



TYPE: ELEMENTAL

HABITAT: CAVE

ATTACK: HORROR FACE



FORMERLY HUMAN, IT STARED DEEP INTO A CRYSTAL WALL RIGHT AS IT WAS SHATTERED, RUINING ITS FACE FOREVER.

CAN BE HEARD STUTTERING THE PHRASE "IS THERE FOOD ON MY LIPS?" OVER AND OVER.

NO: 62: BAPHOMET



## BOSS

TYPE: DEMON

ATTACK:

SUMMONING HELL



BECAUSE SHE HAS SUCH A FUN PERSONALITY, SHE IS WORSHIPPED BY HER FANS.

SHE IS TRANSGENDER, AND HAS INSPIRED MANY TO BE TRUE TO THEMSELVES.

NO: 63: TOMB WALL



TYPE: PUPPET  
HABITAT: DESERT  
ATTACK: WHOMP



THE BRICKS THAT MAKE UP ITS BODY OFTEN CRUMBLE AWAY, SO IT TEARS APART HOUSES TO REPAIR ITSELF.

IF IT SWAPS OUT EVERY BRICK IN ITS BODY OVER ITS LIFETIME, IS IT REALLY STILL THE SAME BEING?

NO: 64: ALIEN VISITOR



TYPE: DEMON

HABITAT: MOON

ATTACK: BOW & ARROW



A LITTLE GREEN MAN FROM ANOTHER WORLD, HE FLEW ACROSS SPACE TO SHARE HIS TECHNOLOGY WITH APPLE PLANET.

WHILE THERE, HE GAINED A LOVE OF OLD WEAPONRY, AND TRADED AWAY HIS RAY GUN FOR SOMETHING A BIT MORE QUANT.

NO: 65: BOMB KID



TYPE: ELEMENTAL

HABITAT: URBAN

ATTACK: INFINI-BOMB



FORMERLY A TEEN NAMED "POPPY", HER HEAD WAS TURNED INTO A BOMB AS PUNISHMENT FOR HER WILD BEHAVIOR, HER REMAINING LIFE IS REPRESENTED BY THE FUSE.

THIS WAS INEFFECTIVE AT CONTROLLING HER BECAUSE SHE IS A NIHILIST.

NO: 66: YETI



TYPE: DEMON

HABITAT: TUNDRA

ATTACK: AVALANCHE



MONSTER WHO LIVES IN THE SNOWY HILLS, IT TRAVELS TO THE SHORE TO THROW TREES AT SEALS FOR FUN.

IT'S SHAGGY AND UNKEMPT AND SMELLS OF FISH, BUT IT FEELS PRETTY GOOD ABOUT ITS APPEARANCE.

NO: 67: SHIPWRECK



TYPE: UNDEAD

HABITAT: AQUATIC

ATTACK: ABYSS DRAG



IT DRIFTS ACROSS THE SEA  
SEARCHING FOR TREASURE  
BECAUSE THERE'S NOTHING  
BETTER TO DO.

IT WISHES TO SEE MORE OF  
WHAT LIFE ON LAND IS  
LIKE, IT ONCE CRAWLED  
ONTO SHORE AND ATE A  
BEACH BALL.

NO: 68: SPACE THING



TYPE: ELEMENTAL

HABITAT: MOON

ATTACK: COSMO LIGHT



IT CAME FROM THE STARS  
AND APPEARED AT A BASE  
IN THE ARCTIC.

IT LACKS CONFIDENCE IN  
ITS APPEARANCE, ITS BODY  
TWISTS AND CONTORTS INTO  
THE SHAPE OF ANYTHING IT  
MEETS.

NO: 69: GACHI-PILL



TYPE: PUPPET

HABITAT: PHARMACY

ATTACK: MEDICINE



REMEMBER TO TAKE YOUR  
MEDICINE!

ITS BODY CONTAINS EVERY  
KIND OF MEDICINE EVER  
CREATED, BUT BECAUSE IT  
DISPENSES THEM AT  
RANDOM, IT'S NOT MUCH  
USE.

NO: 70: DRAGON



TYPE: DEMON

HABITAT: CAVE

ATTACK: DRAGON FIRE



LIVES DEEP UNDERGROUND  
WHERE IT GUARDS ITS  
MOST PRECIOUS TREASURE,  
A LAKE MADE OF SOUP.

IF EVERYONE KNEW ABOUT  
SOUP LAKE, THE DRAGON'S  
BABIES WOULD HAVE  
NOTHING TO EAT, SO KEEP  
THIS A SECRET, OKAY?

NO: 71: FLATWOODS MONSTER



**BOSS**

TYPE: ???

ATTACK:

TERROR GLARE



AN ALIEN THAT ARRIVED ON EARTH TO TAKE CARE OF NATURE IN SECRET.

IF SPOTTED, IT SPRAYS A HALLUCINOGENIC GAS THAT MAKES PEOPLE IMAGINE GIANT OWLS.

NO: 72: GOLEM



TYPE: PUPPET

HABITAT: MOUNTAIN

ATTACK: CLAY PUNCH



IT WAS CREATED OUT OF CLAY BY A RABBI, AND WILL OBEY ANY COMMAND GIVEN TO IT.

IT LACKS INTUITION, AND BECOMES ANXIOUS WHEN NOT GIVEN CLEAR INSTRUCTIONS, SO IT OFTEN RETURNS TO ASK FOR ADVICE.

NO: 73: SMOG MONSTER



TYPE: NATURE

HABITAT: URBAN

ATTACK: PLANTATION



AFTER YEARS OF TURNING RIVERS SOUR AND FORESTS ROTTEN, IT CHANGED ITS WAYS AND WORKS TO UNDO THE DAMAGE IT DID.

IT STILL GETS THE URGE TO POISON THE EARTH SOMETIMES, BUT IT HAS THIS UNDER CONTROL.

NO: 74: LAND STAR



TYPE: BEAST

HABITAT: BEACH

ATTACK: REGENERATE



IT HAS A HIGH STAR RATING NOT BECAUSE IT IS STRONG, BUT SIMPLY BECAUSE IT ITSELF IS A STAR.

IT SPREADS OUT ITS 5 LIMBS TO TAKE UP ALL OF THE SPACE AROUND IT, MAKING PUTTING IT ON A TEAM IMPOSSIBLE.

NO: 75: SNOW HAG



TYPE: UNDEAD

HABITAT: TUNDRA

ATTACK: ICE HANDS



SHE APPEARS DURING HARSH BLIZZARDS AND KNOCKS ON THE DOORS OF THE LONELY.

THOUGH SHE INTENDS ON TURNING HER VICTIMS INTO ICE, OCCASIONALLY SHE FINDS LOVE, AND CURRENTLY HAS AROUND 10 DIFFERENT PARTNERS.

NO: 76: MAGNET MIND



TYPE: ELEMENTAL  
HABITAT: MOUNTAIN  
ATTACK: N & S POLE



IT SPENDS A LOT OF TIME  
FLOATING IN PLACE,  
SLIGHTLY VIBRATING.

THIS IS BECAUSE IT'S  
PUTTING MOST OF ITS  
EFFORT INTO STOPPING  
ITSELF FROM BEING TORN  
IN HALF BY THE NORTH AND  
SOUTH POLES.

NO: 77: WEREWOLF



TYPE: BEAST

HABITAT: MOON

ATTACK: SILVER CLAW



SHE TRAVELED TO THE MOON TO AUGMENT HER WEREWOLF STRENGTH, BUT NOW SHE IS UNABLE TO EVER RETURN TO HER HUMAN FORM.

HER GIRLFRIEND IS MORE THAN OKAY WITH THIS ARRANGEMENT.

NO: 78: SUNRISE



TYPE: ELEMENTAL  
HABITAT: GRASSLAND  
ATTACK: SOLAR RAY



UNDEAD MONSTERS ONLY  
COME OUT AT NIGHT,  
BECAUSE IF SPOTTED  
DURING THE DAY, SUNRISE  
WILL SWOOP DOWN AND  
DEVOUR THEM.

IT HANGS IN THE SKY AND  
SHOOTS LASER BEAMS THAT  
CAN MELT ANYTHING.

NO: 79: HOMONCULUS



## BOSS

TYPE: ELEMENTAL

ATTACK:

ALCHEMY POWER



WIZARD PLUM'S HUBRIS  
LEAD TO THE CREATION OF  
THIS MONSTER VIA ALCHEMY.

IT HARVESTS BIOMASS FROM  
THE MICE IT EATS IN THE  
HOPE OF GROWING A BODY.

NO: 80: ORCHARD SERVANT



TYPE: ???

HABITAT: ORCHARD

ATTACK: BODY THROW



THEY STUMBLE AROUND THE HOLY ORCHARD, MOVING AS IF BEING DRAGGED BY AN UNKNOWN FORCE.

THE EYES ARE JUST MARKS CARVED INTO THEIR SKIN, AND EACH SERVANT HAS A DIFFERENT ARRANGEMENT AND AMOUNT OF EYES.

NO: 81: ORCHARD GUARDIAN?



**BOSS?**

TYPE: DEAD  
ATTACK:

....

OH DEAR...

THE ORCHARD GUARDIAN HAS  
BEEN KILLED.

WHO COULD HAVE DONE  
THIS?

NO: 82: POSSESSED CARROT



TYPE: PUPPET  
HABITAT: ORCHARD  
ATTACK: LIFE SWING



HE TRIED TO STOP THE  
ORCHARD GUARDIAN'S  
MURDERER, AND NOW EXISTS  
ONLY AS A SOULLESS  
PUPPET.

THERE'S NOTHING WE CAN  
DO FOR HIM NOW.

NO: 83: ROTTEN APPLE



**BOSS**

TYPE: ???

ATTACK:

APPOCALYPSE



CONSUMED WITH A LUST FOR  
POWER, HE DESTROYED THE  
ORCHARD GUARDIAN WITH A  
SNEAK ATTACK.

OH APPLE WARRIOR...  
I CAN'T BELIEVE YOU'VE  
DONE THIS...

NO: 84: LORD OF EDEN



NO: 84: LORD OF EDEN

TYPE: FORBIDDEN

ATTACK: APPLE OF DEATH

ATTACK: END OF PARADISE



HE WAS UNABLE TO CONTROL  
THE OVERWHELMING POWER  
HE STOLE FROM THE HOLY  
ORCHARD, AND TOOK ON  
THIS GROTESQUE FORM.

HE WAS TIRED OF BEING  
WEAK, AND IS NOW A GOD.

I'M SO SORRY IT HAD TO  
END LIKE THIS.

## NO: 85: DEPARTING SPIRITS



WITH LORD OF EDEN DEFEATED, APPLE WARRIOR TURNED BACK TO HIS GOOD OLD SELF.

"SOME TIME AGO I ATE A STRANGE FRUIT, AND AFTERWARDS ALL I COULD THINK ABOUT WAS POWER."

CARROT WARRIOR FORGAVE APPLE WARRIOR WITH HIS FINAL BREATH, AND THEY TRAVELLED TO HEAVEN TOGETHER.



**END**

## AFTERWORD

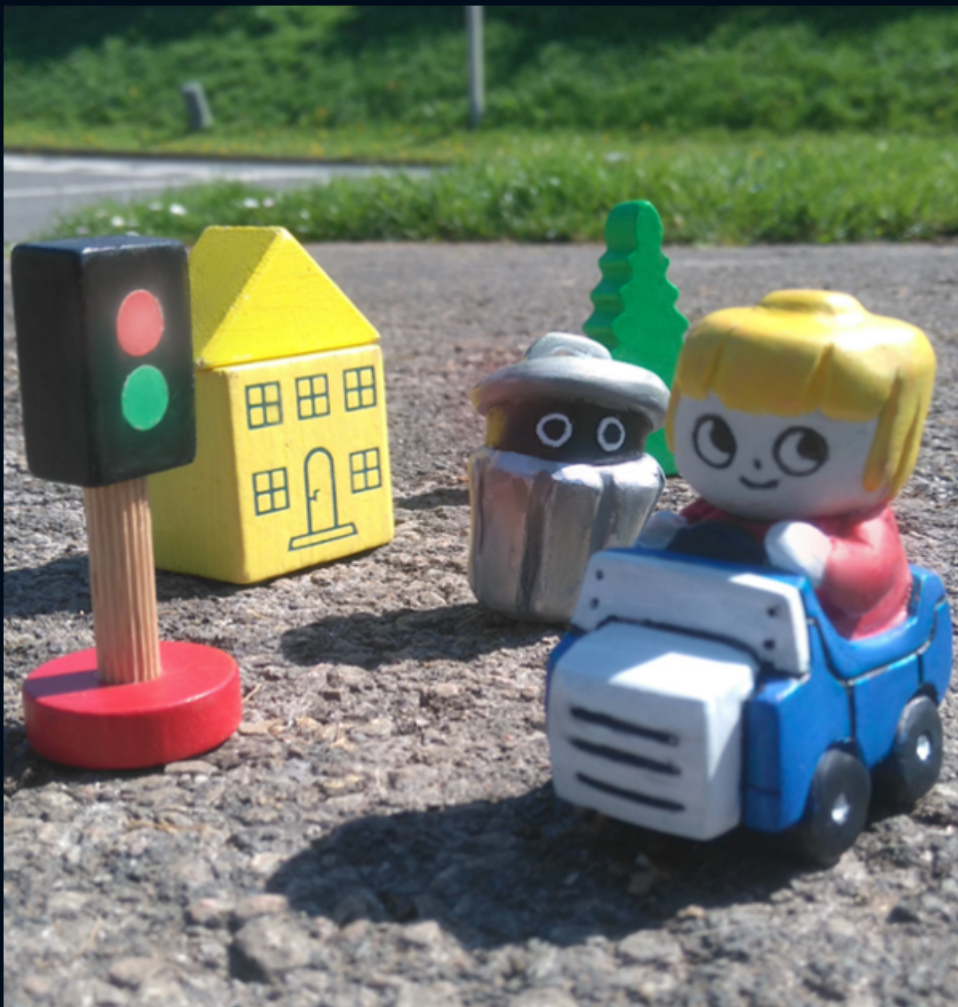
Well, that's all for now,  
thank you so much for  
reading my little book,  
I'm so happy with how it  
turned out!

Wherever Apple and  
Carrot Warrior are now,  
I'm sure they're doing  
just fine.

I hope you had fun, and  
that you have a lovely  
day today!



-splendidland

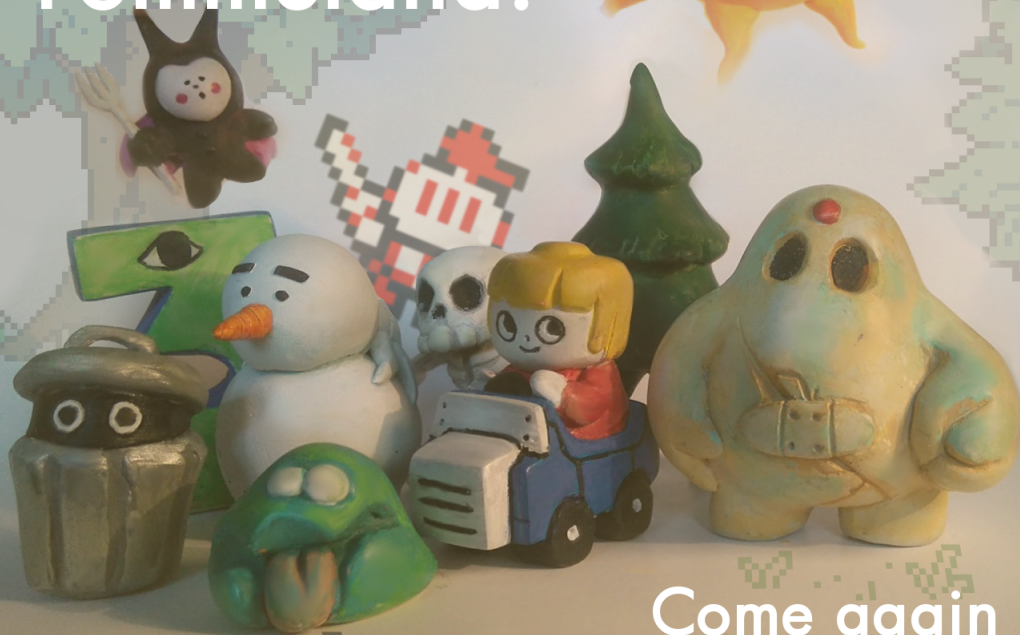








Thank you  
for visiting  
Pommeland!



Come again  
soon!

# apple quest

## MONSTERS

TDX

only for

GAME BOOK  
COLOUR

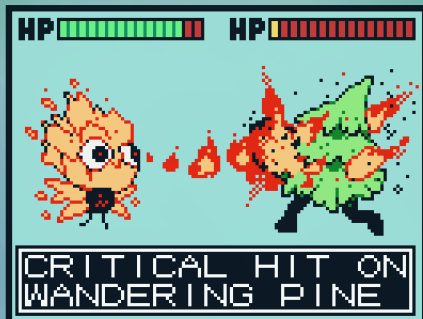


A Collection of 80+ monsters from a video game that doesn't exist!

• Not a real game, these screenshots are fake!



- Lovingly crafted pixel art!
- Info on all the monsters!
- Look smart by owning a book!



splendidland 

<https://twitter.com/splendidland>  
[www.splendid.land](http://www.splendid.land)