



HAT PATTERN COLLECTION

INCLUDES 6 DESIGNS

Hat Pattern Collection

Plumber Cap (Page 4)



Magician Hat (Page 6)



Big Witch Hat (Page 8)



Peaked Cap (Page 10)



Straw Hat (Page 12)



Cowboy Hat (Page 14)

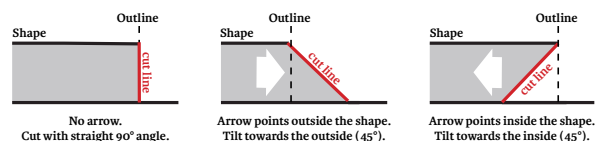


Instructions:

All patterns were made with **5mm low density EVA foam** and glued with **contact cement**.

Edit the shapes and add more layers or foam clay for even more variations!

Some lines are marked with an arrow. These lines must be cut at an angle. Tilt either inside or outside your shape based on this drawing:



How to scale and print these patterns

Hi there! To properly print these pattern I recommend using the free [Adobe Acrobat Reader](#). Other software works as well of course, as long as it offers similar printing options.

Now open the pattern pdf file and go to **file -> print** to see the printing options window.

Do **not** select "Size" with the "fit" or "Actual size" option. This will lead to your patterns being printed out either too small or cut off (see right image).

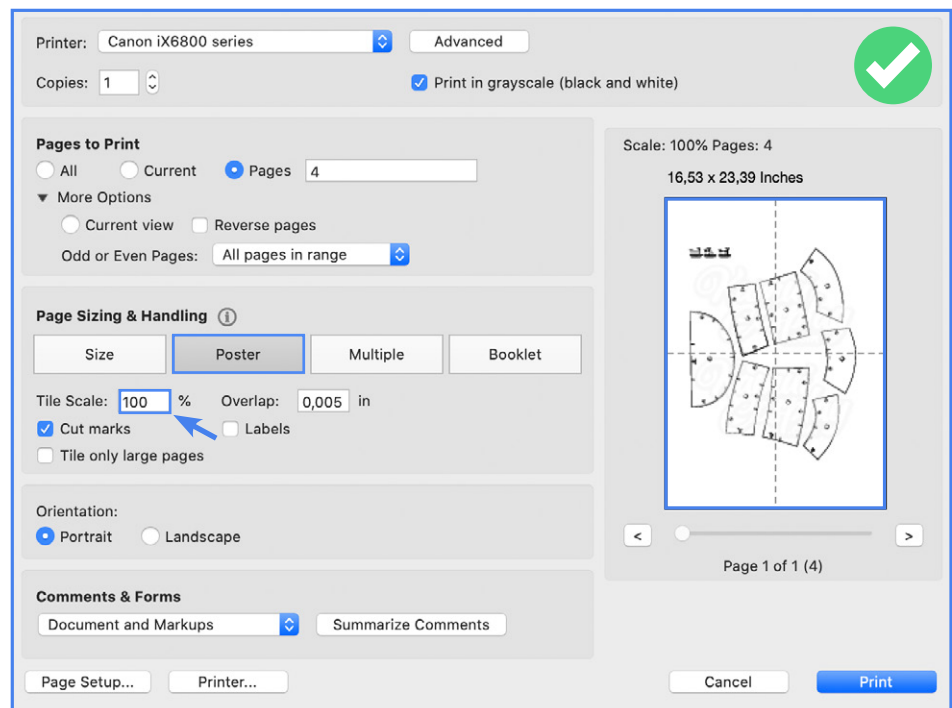
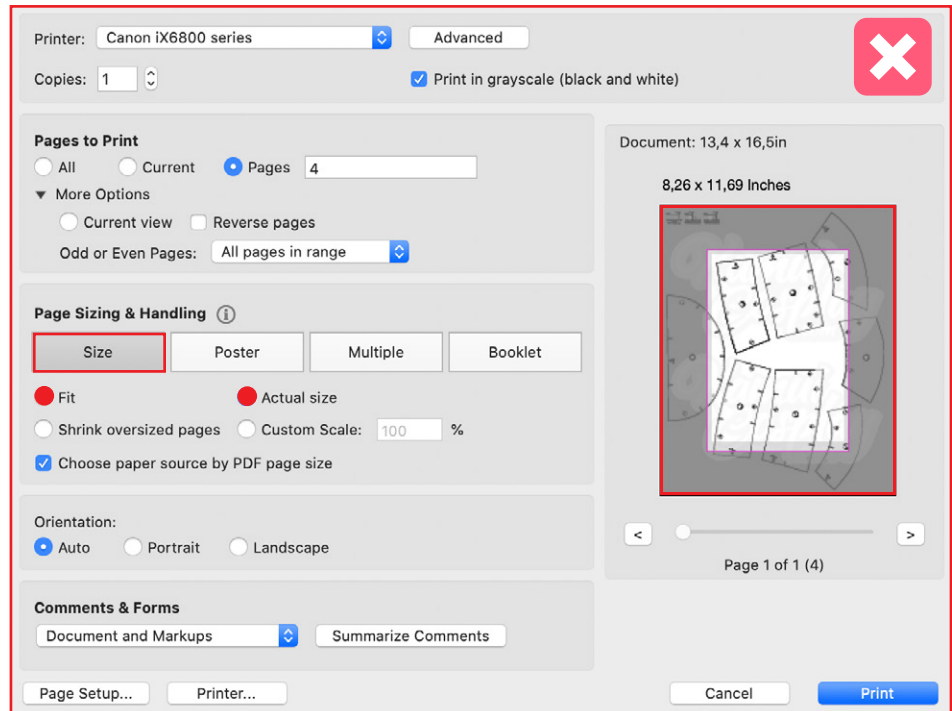
-> Instead select "Poster"!

Here you can set your "Scale" as large or small as you need and Acrobat will automatically split your patterns over multiple pages!

All my patterns are designed to fit myself (Svetlana) at 100% scale (I have a 56cm, 22inch head circumference). Just change the scale if you want to print them smaller or larger.

Now you can print them out and tape the individual pages together!

Have fun crafting! ❤️

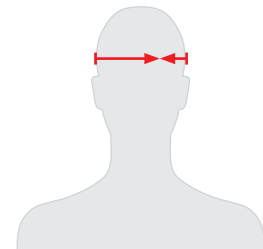
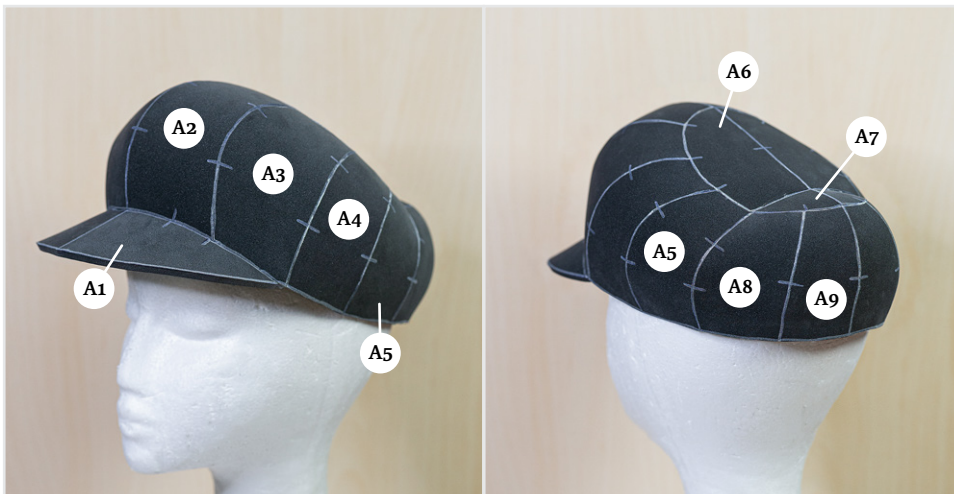
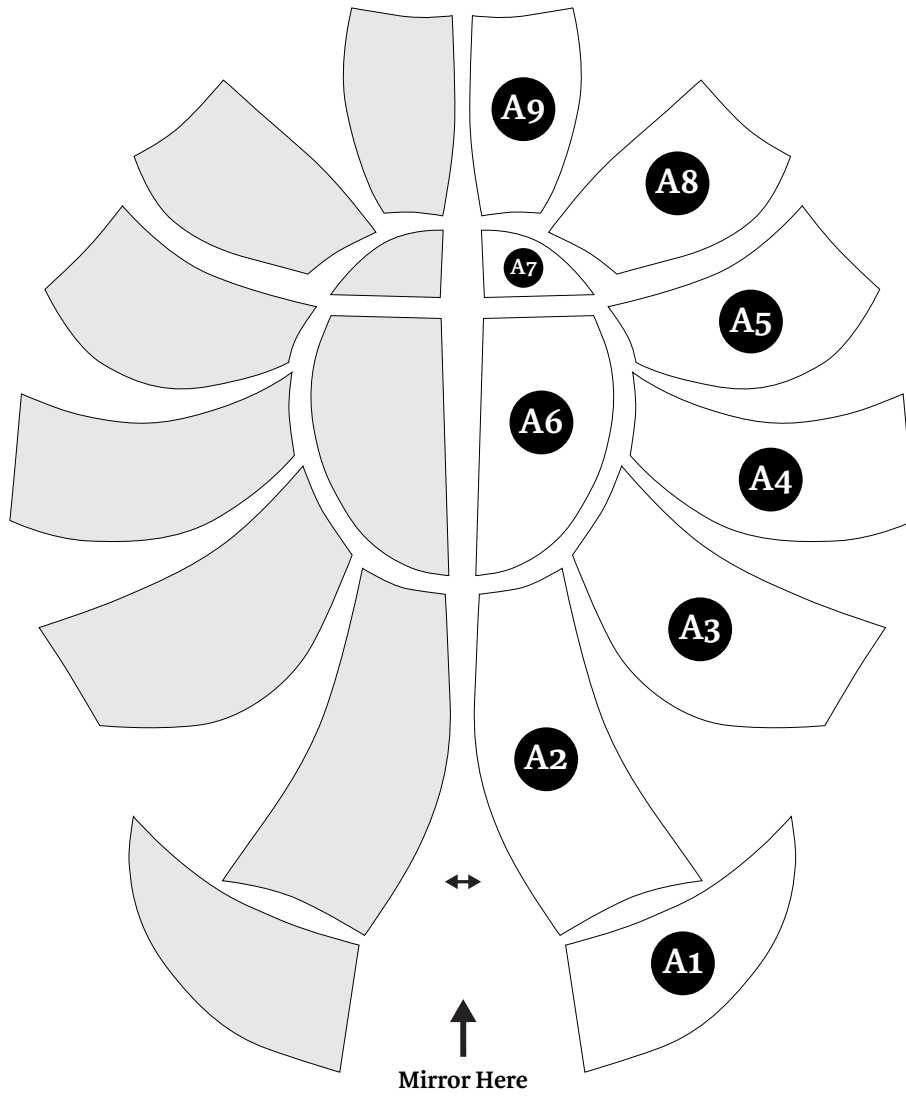


Download the (free) Adobe Acrobat Reader from: <https://get.adobe.com/reader/>

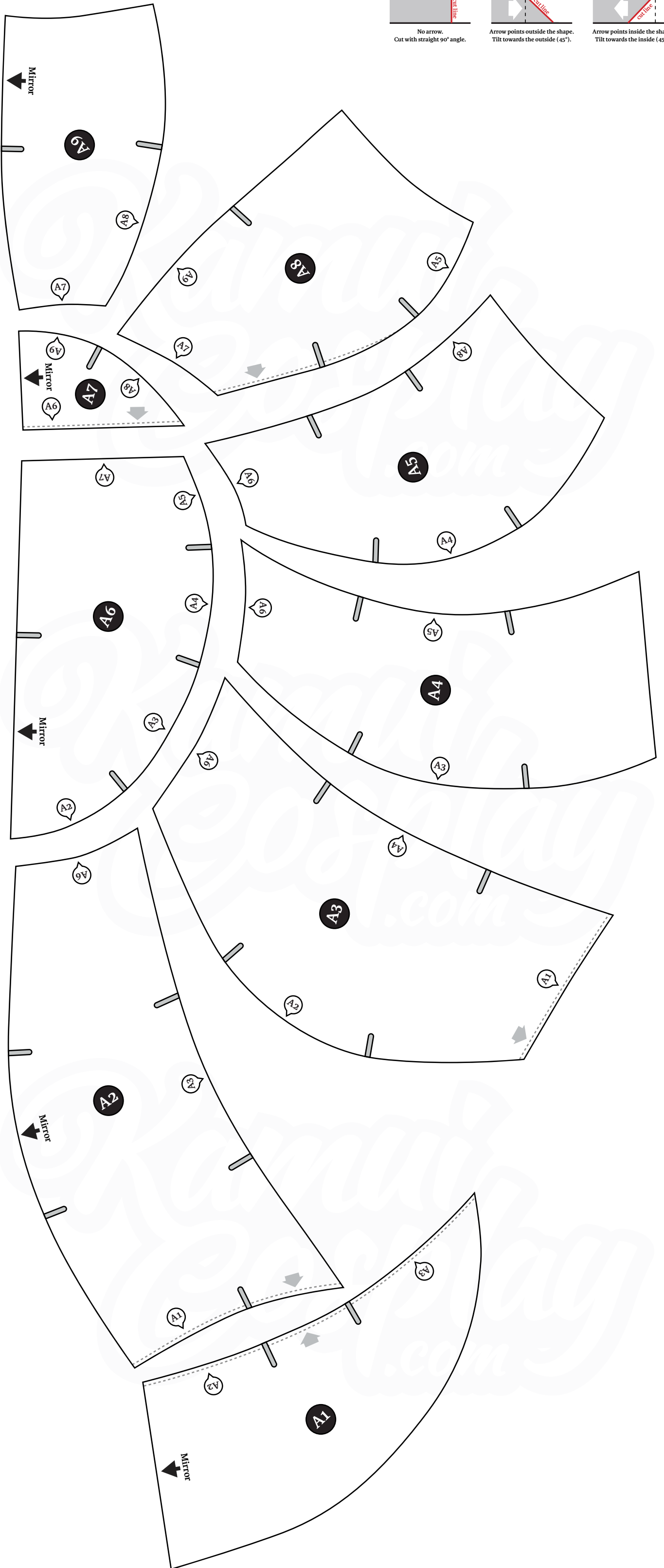
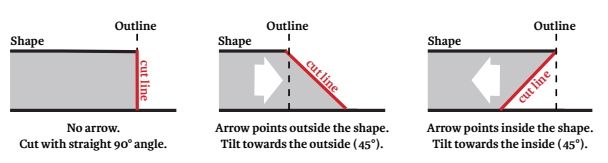
If you need help building these patterns, check out the instructional video I uploaded to my website: kamuicosplay.com/product/hatpatterns

Plumber Cap Pattern

(print page 5)

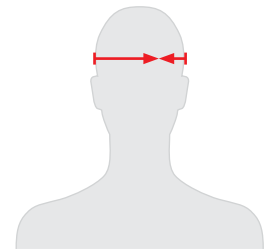
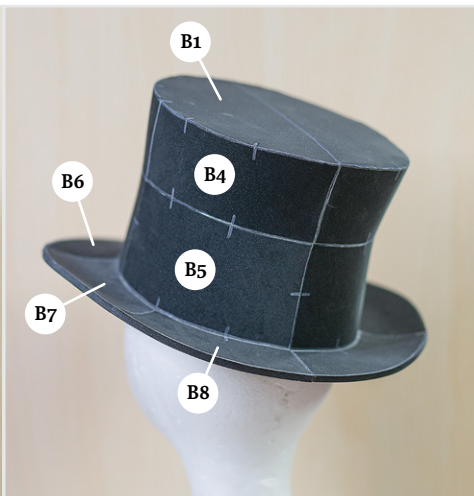
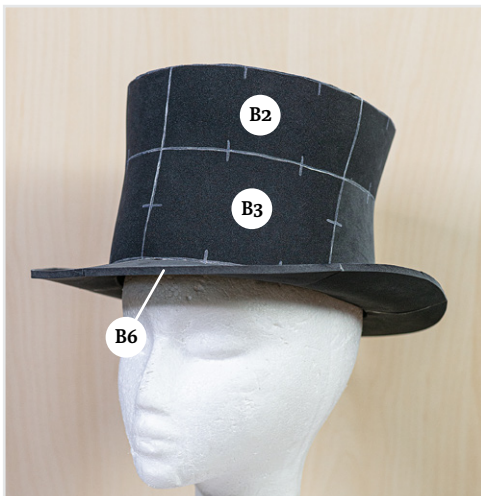
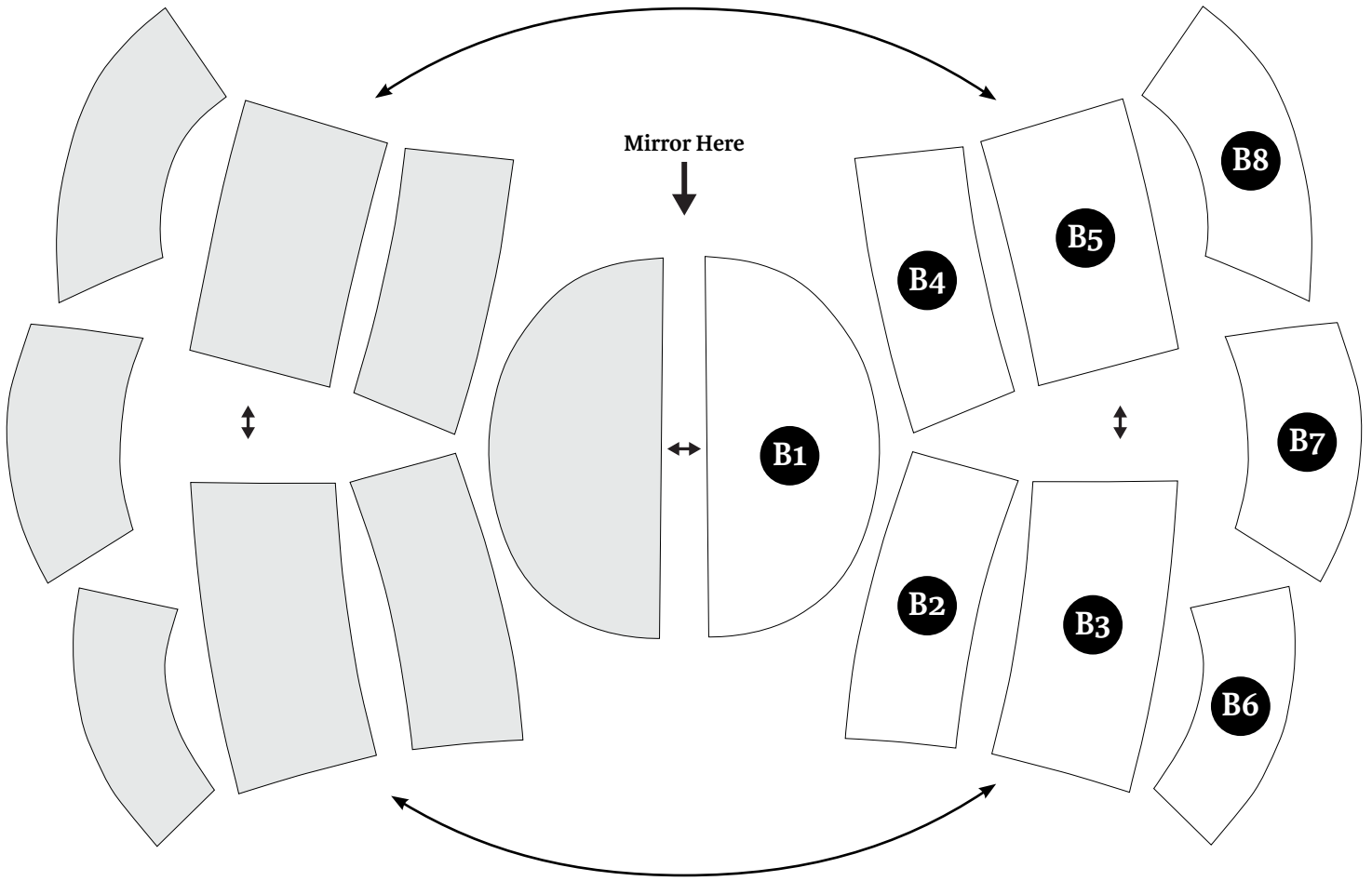


Circumference in cm	Print in Scale	Circumference in inch
45.7 cm	80 %	18 inch
51.5 cm	90 %	20.3 inch
57 cm	100 %	22.4 inch
62.9cm	110 %	24.8 inch
68.6 cm	120 %	27 inch



Magician Hat Pattern

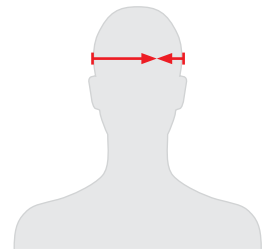
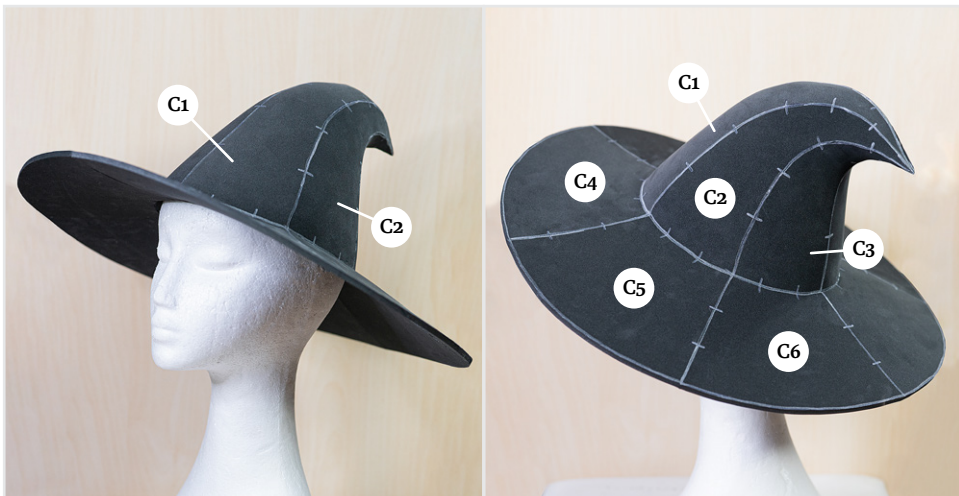
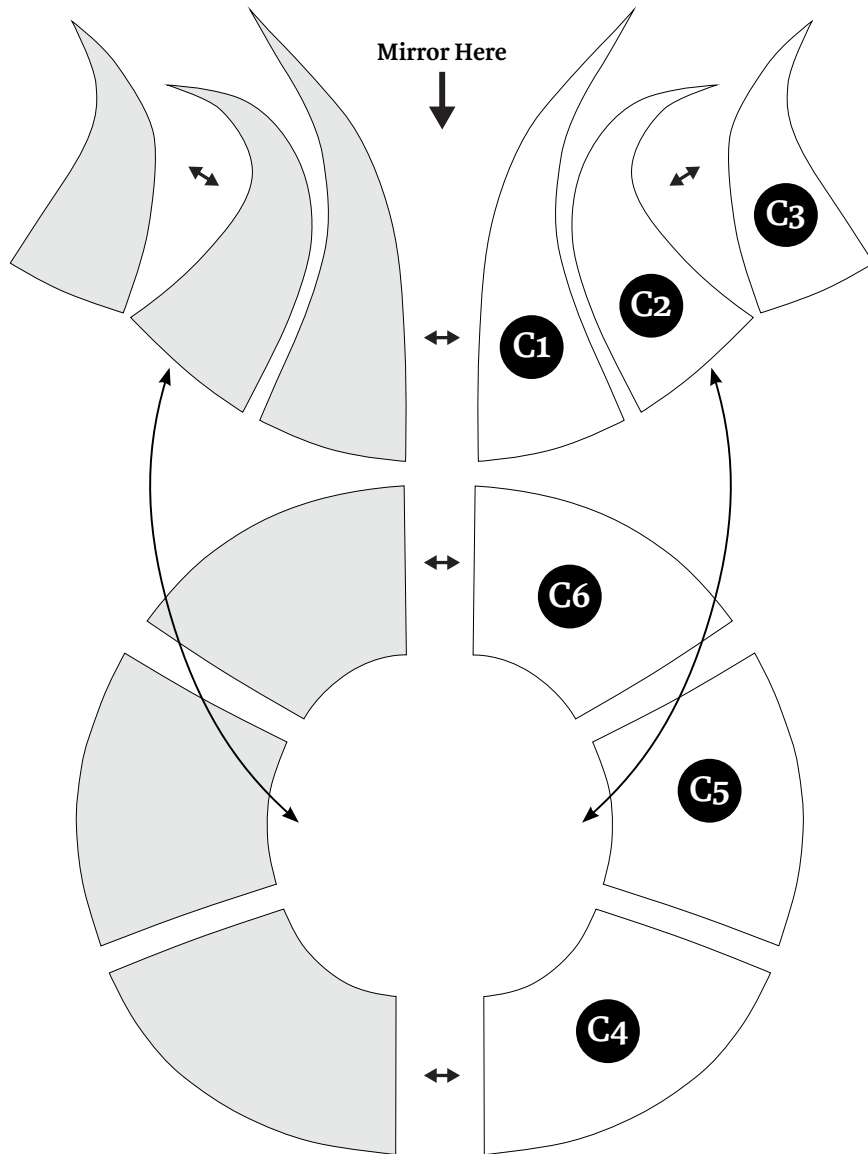
(print page 7)



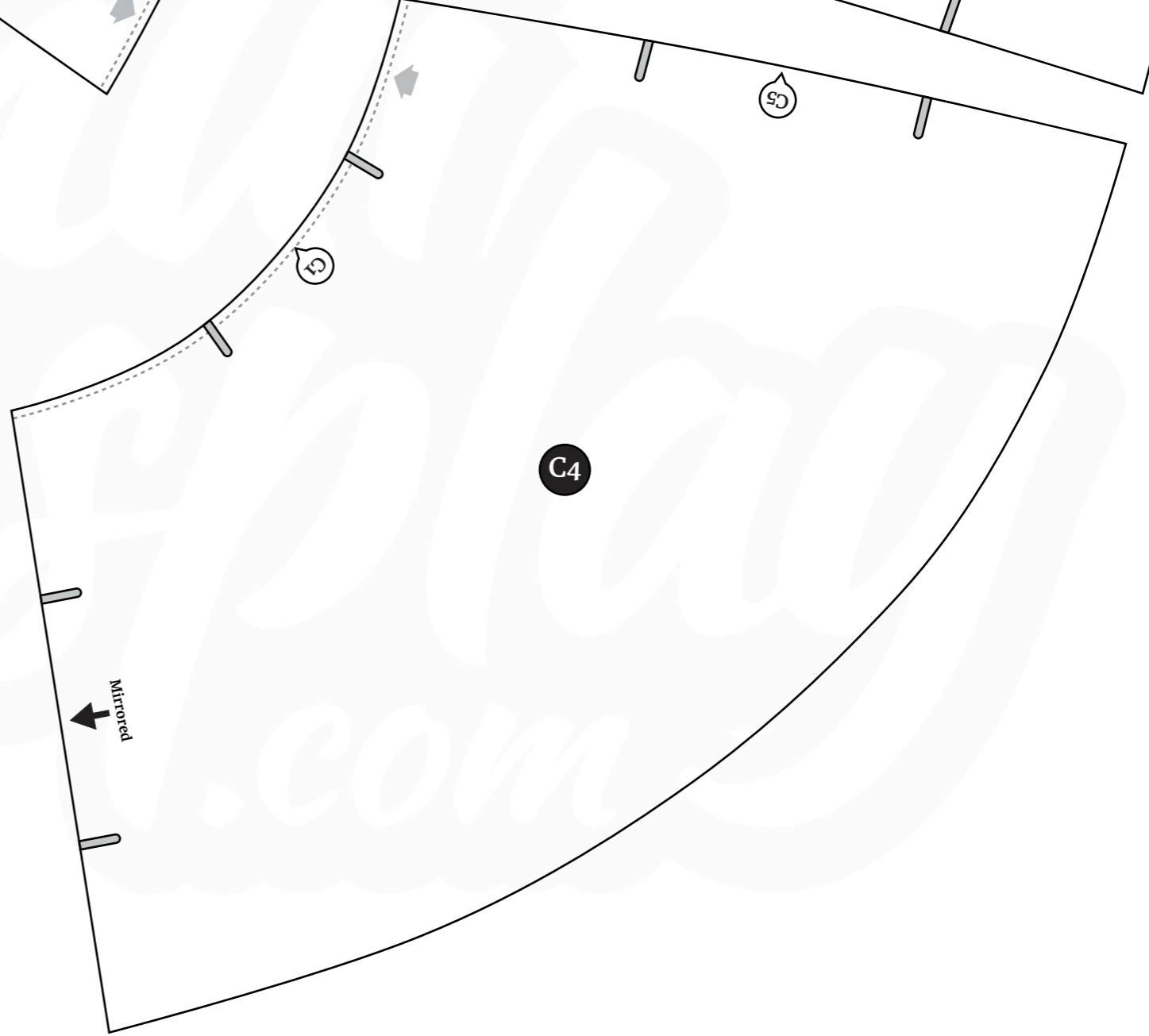
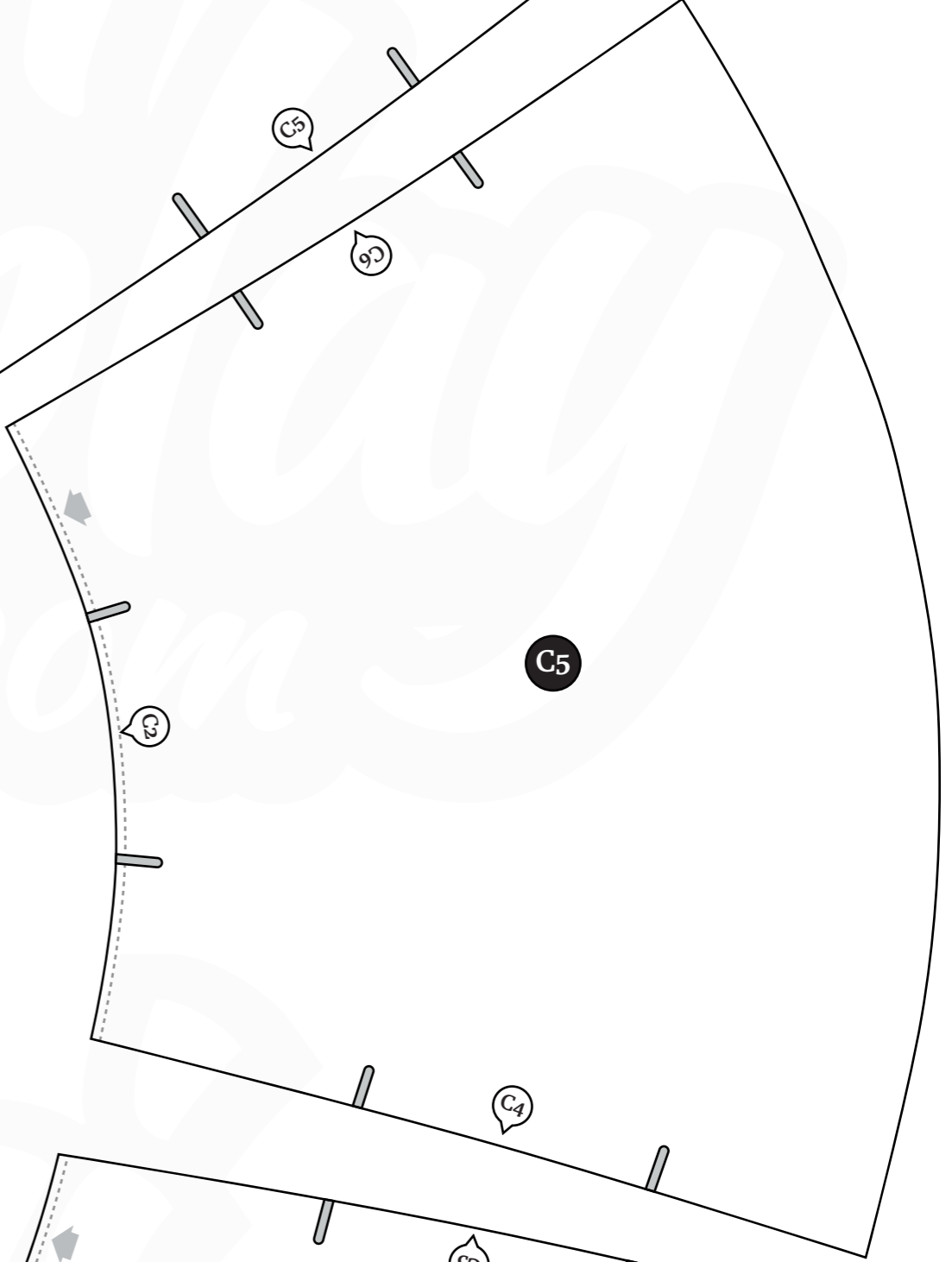
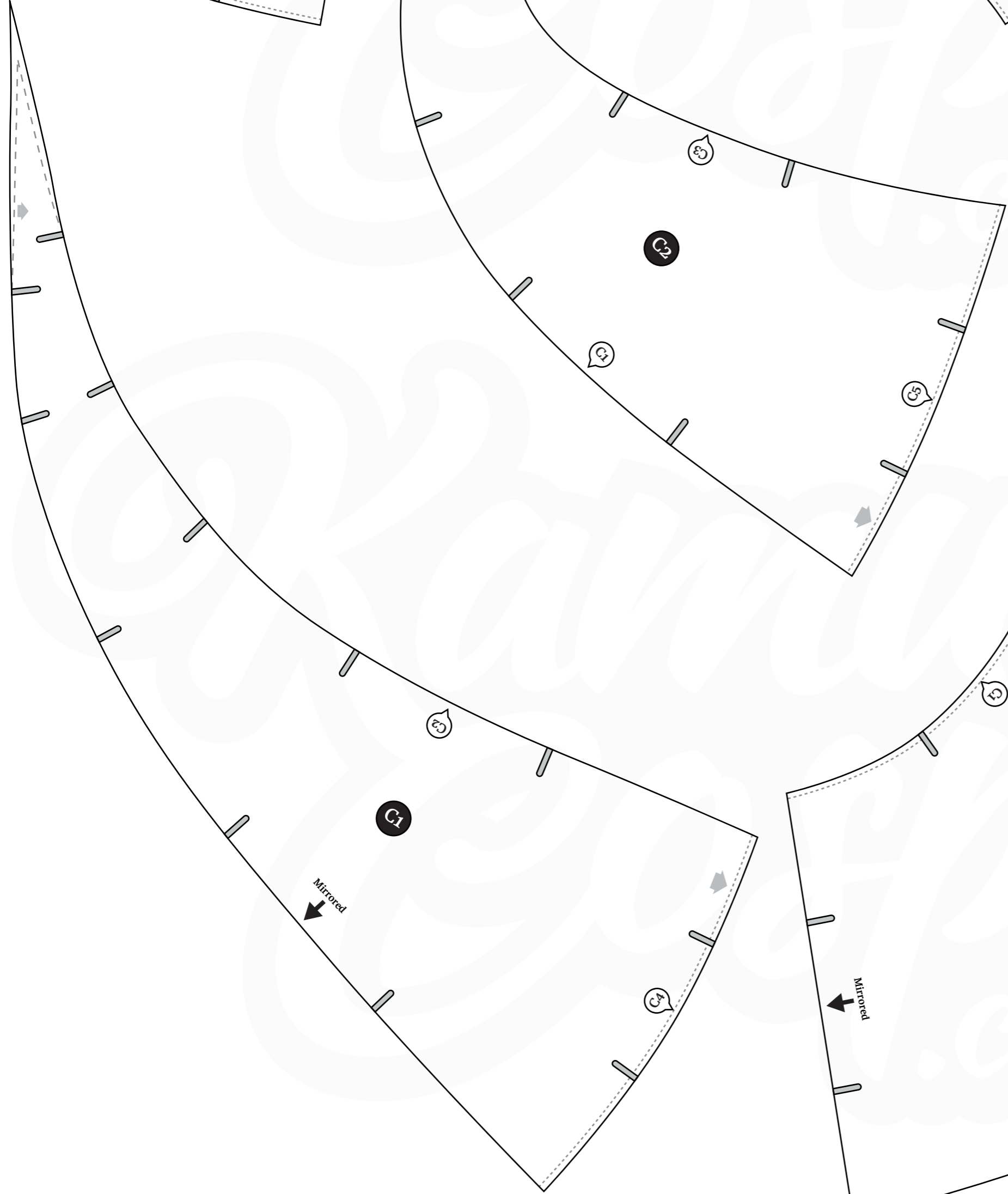
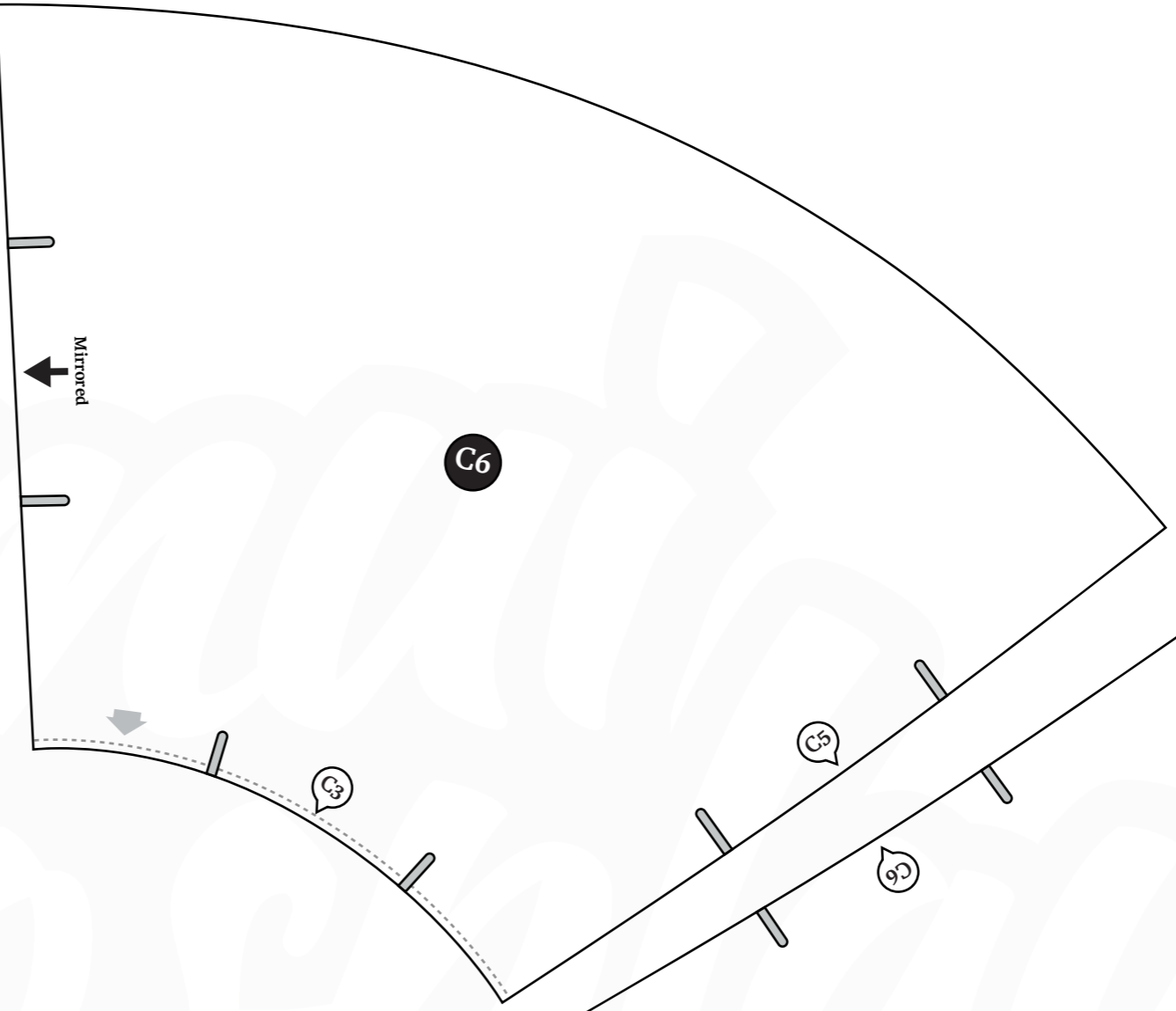
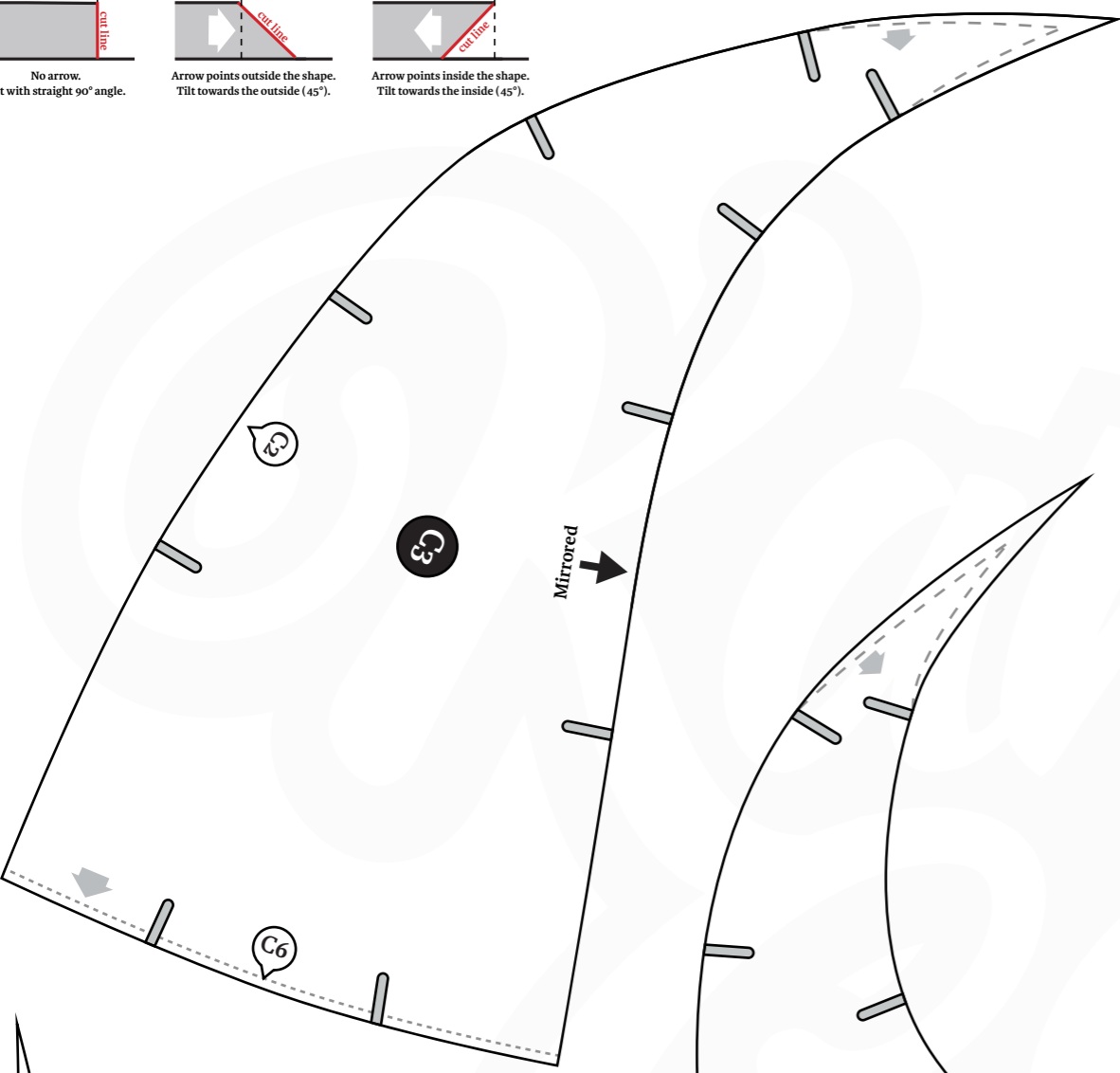
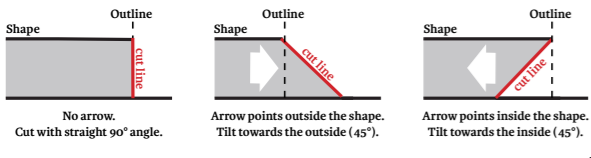
Circumference in cm	Print in Scale	Circumference in inch
44.5 cm	80 %	17.5 inch
50 cm	90 %	19.6 inch
55.6 cm	100 %	21.9 inch
61.2 cm	110 %	24.1 inch
66.8 cm	120 %	26.3 inch

Big Witch Hat Pattern

(print page 9)

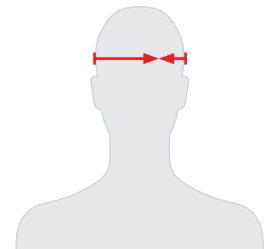
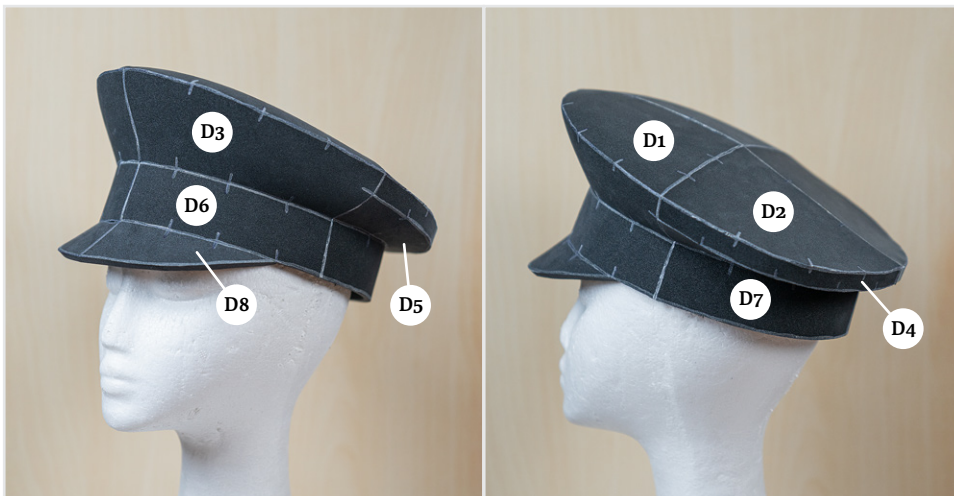
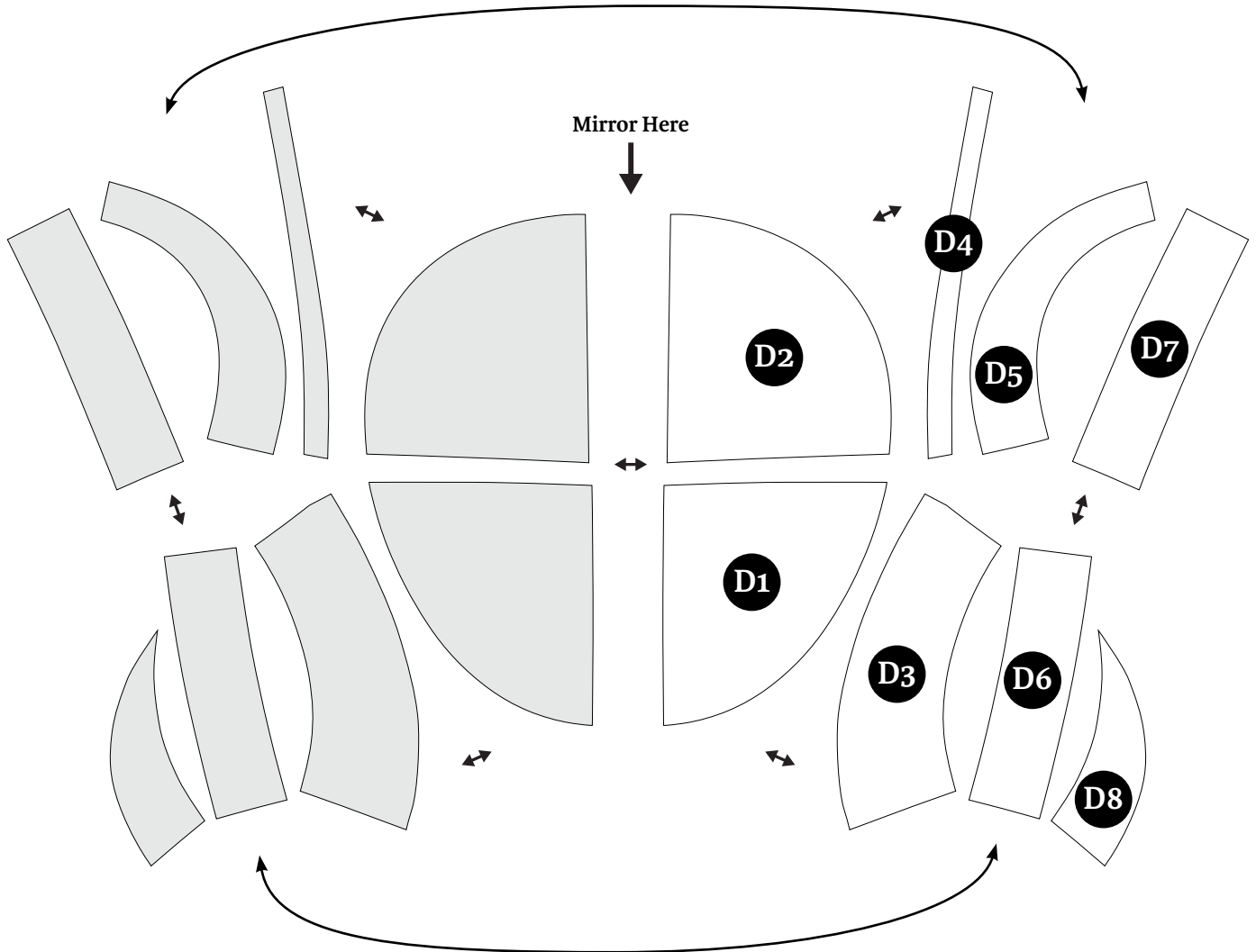


Circumference in cm	Print in Scale	Circumference in inch
45 cm	80 %	17.7 inch
50.7 cm	90 %	20 inch
56.4 cm	100 %	22.2 inch
62 cm	110 %	24.4 inch
67.6 cm	120 %	26.6 inch

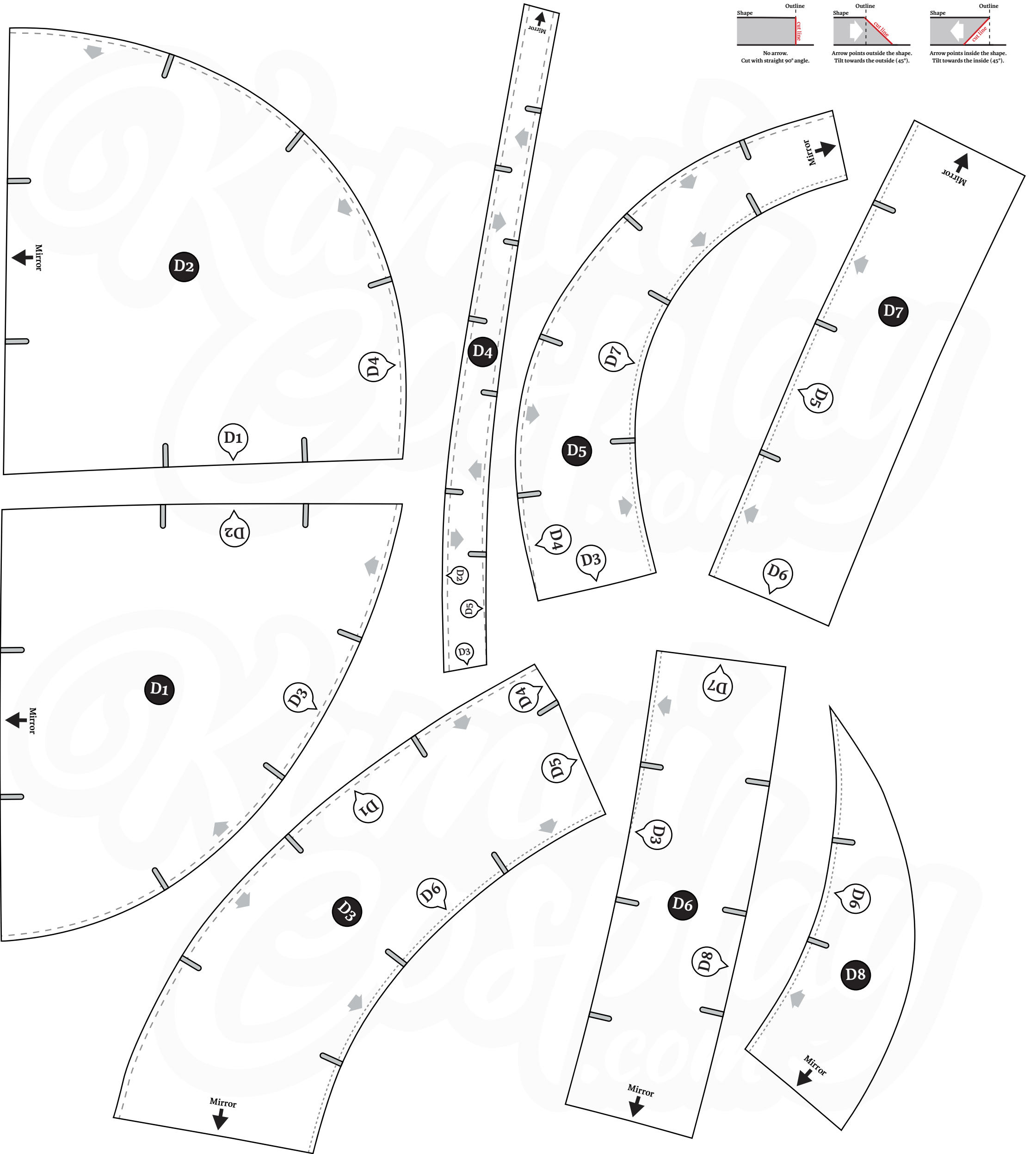
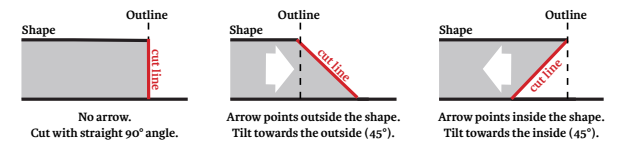


Peaked Cap Pattern

(print page 11)

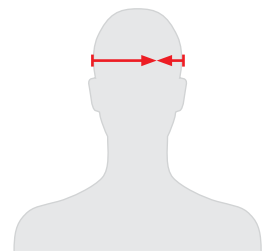
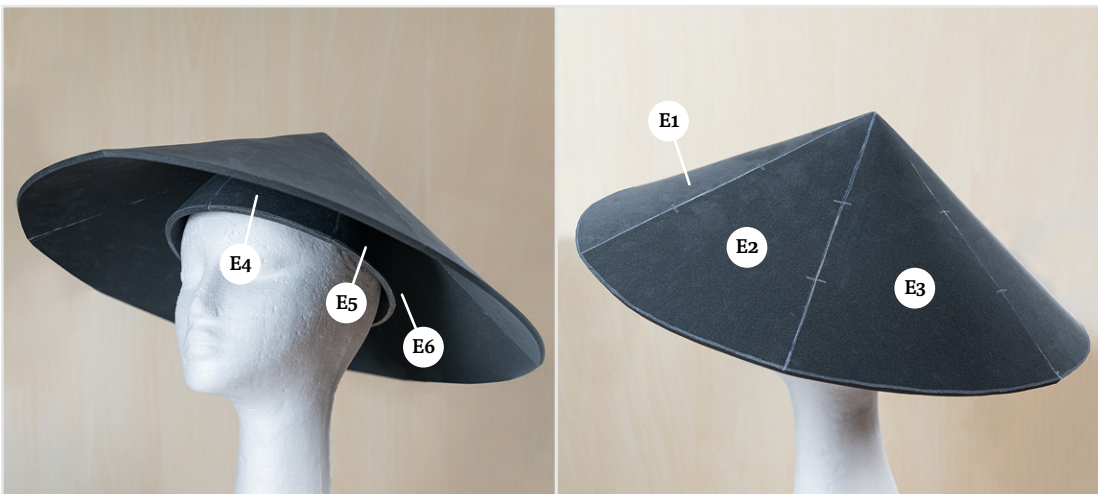
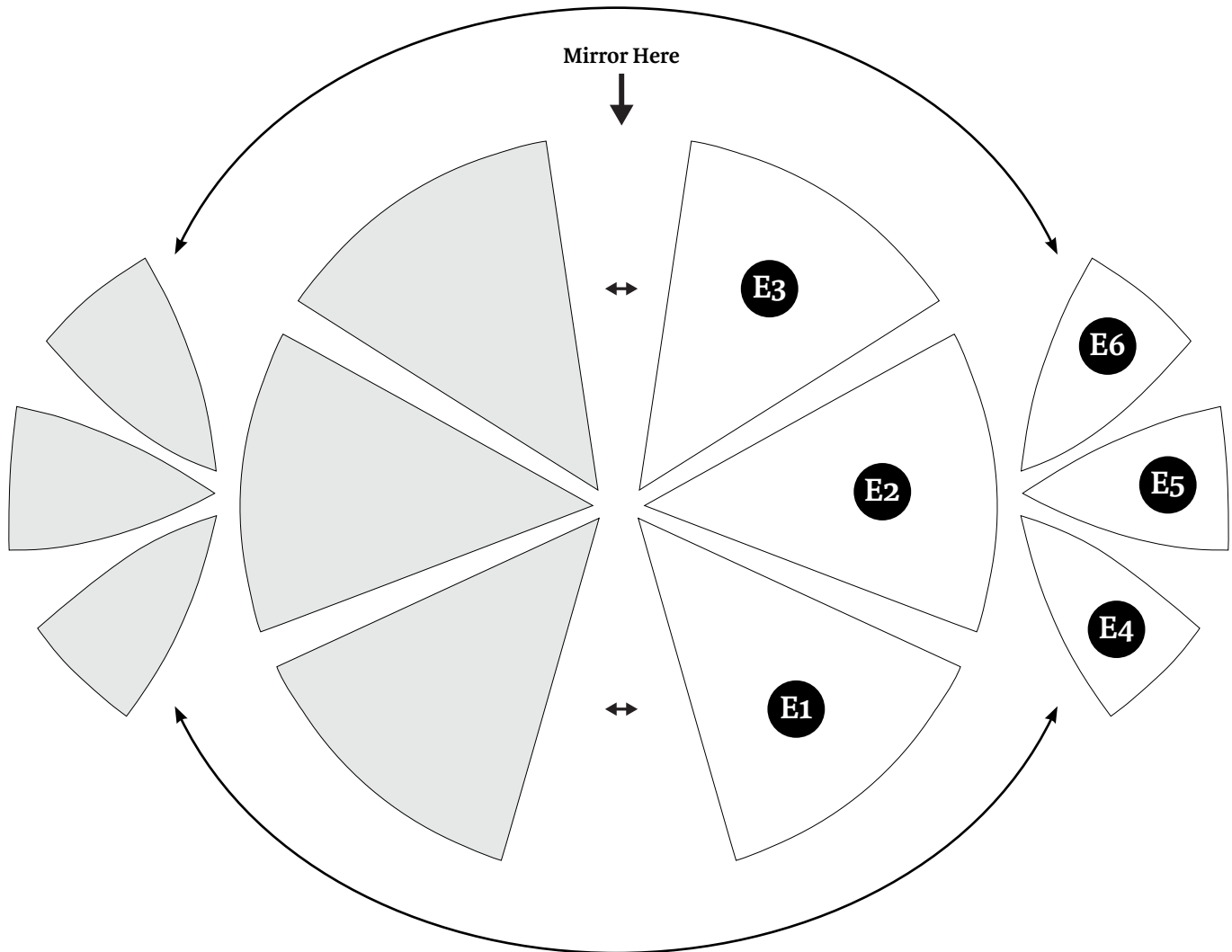


Circumference in cm	Print in Scale	Circumference in inch
44.8 cm	80 %	17.6 inch
50.1 cm	90 %	19.7 inch
56 cm	100 %	22 inch
61.6 cm	110 %	24.3 inch
67.2 cm	120 %	26.5 inch

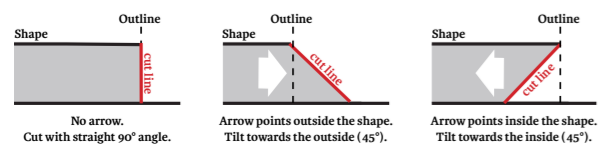
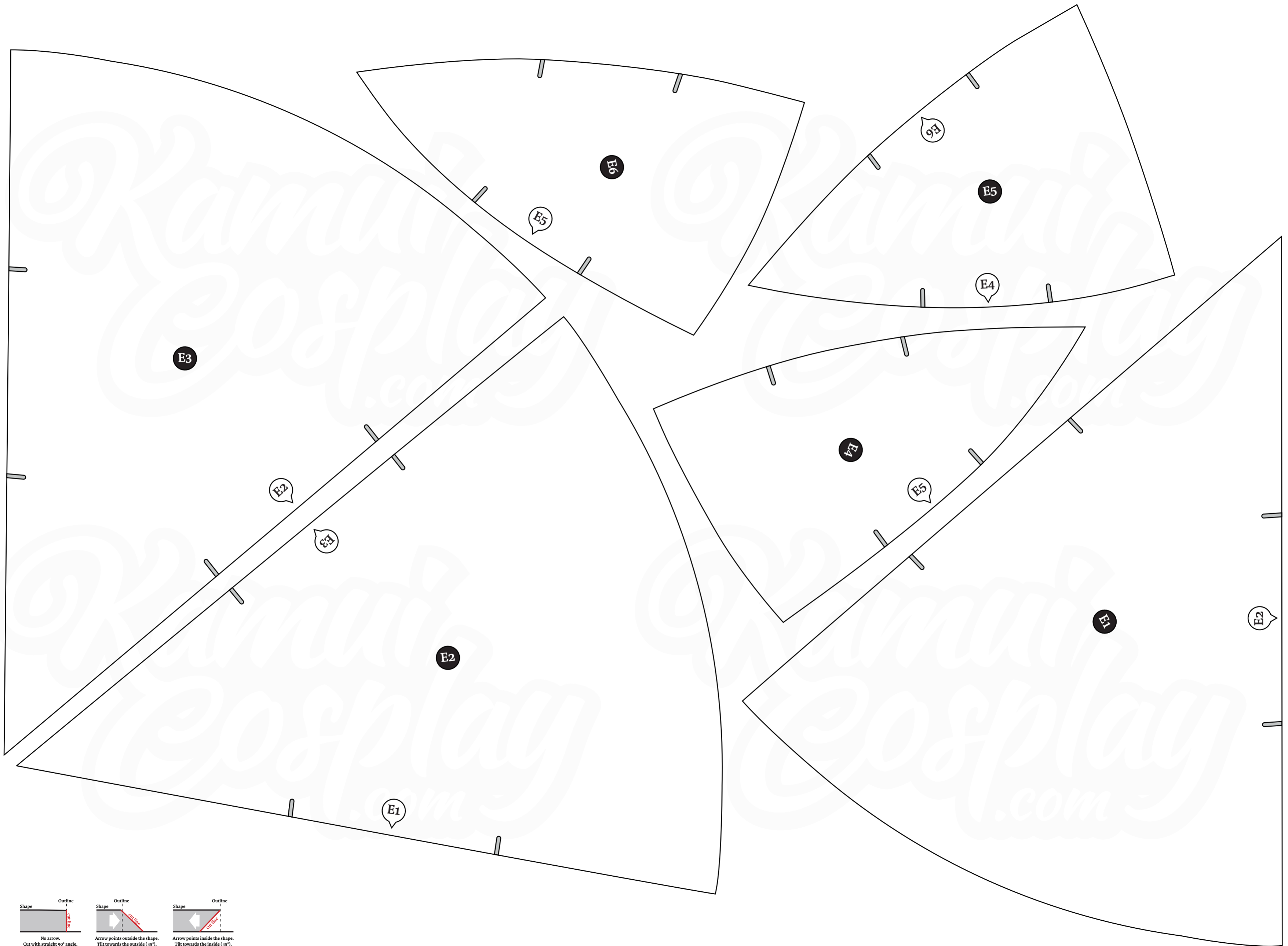


Straw Hat Pattern

(print page 13)

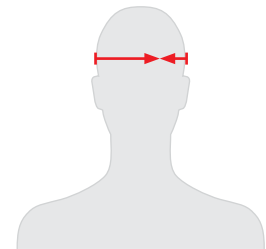
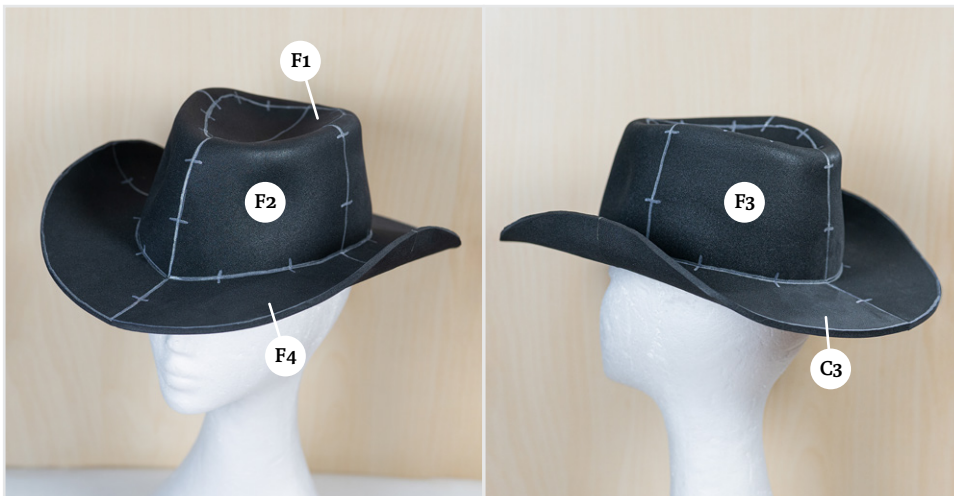
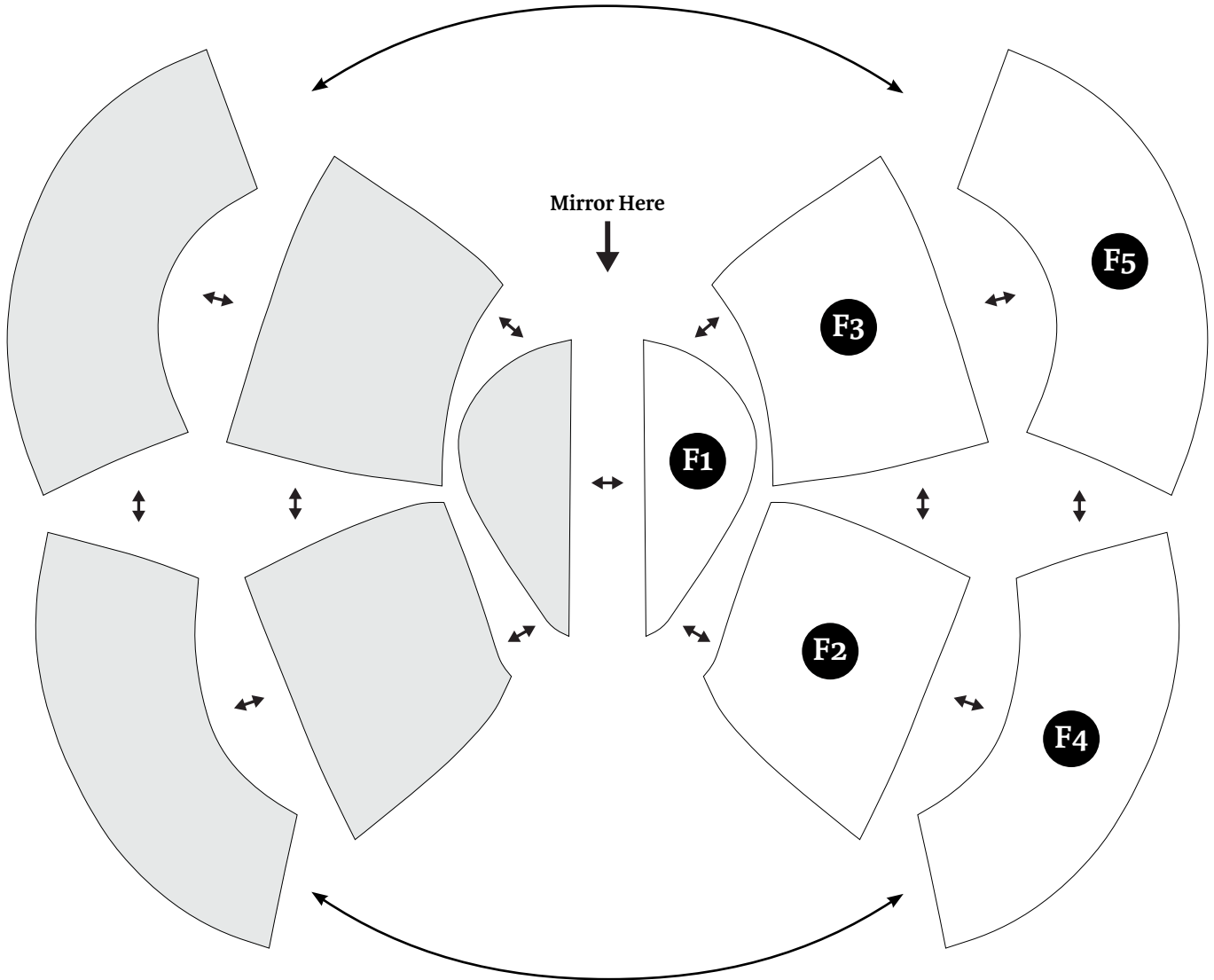


Circumference in cm	Print in Scale	Circumference in inch
45.2 cm	80 %	17.8 inch
50.8 cm	90 %	20 inch
56.5 cm	100 %	22.2 inch
62.1 cm	110 %	24.4 inch
67.8 cm	120 %	26.7 inch

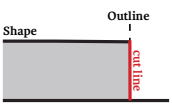


Cowboy Hat Pattern

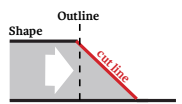
(print page 15)



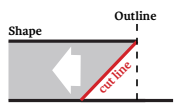
Circumference in cm	Print in Scale	Circumference in inch
44.8 cm	80 %	17.6 inch
50.4 cm	90 %	19.8 inch
56 cm	100 %	22 inch
61.6 cm	110 %	24.2 inch
67.2 cm	120 %	26.5 inch



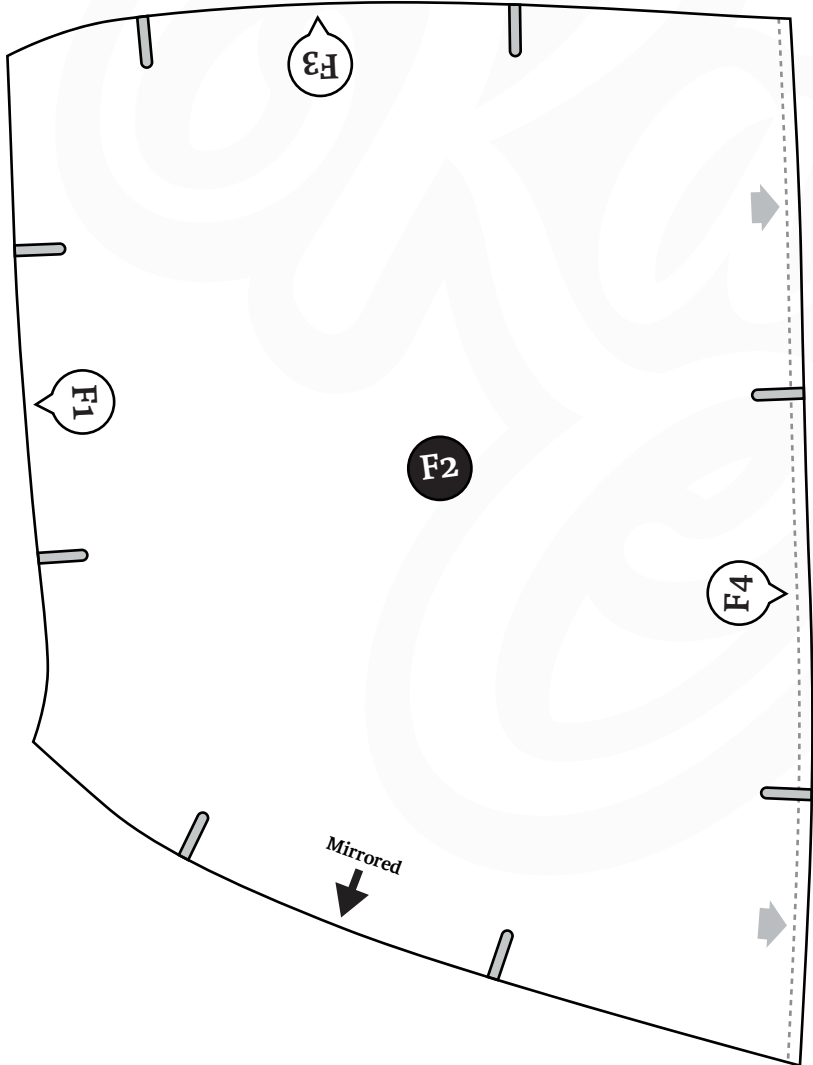
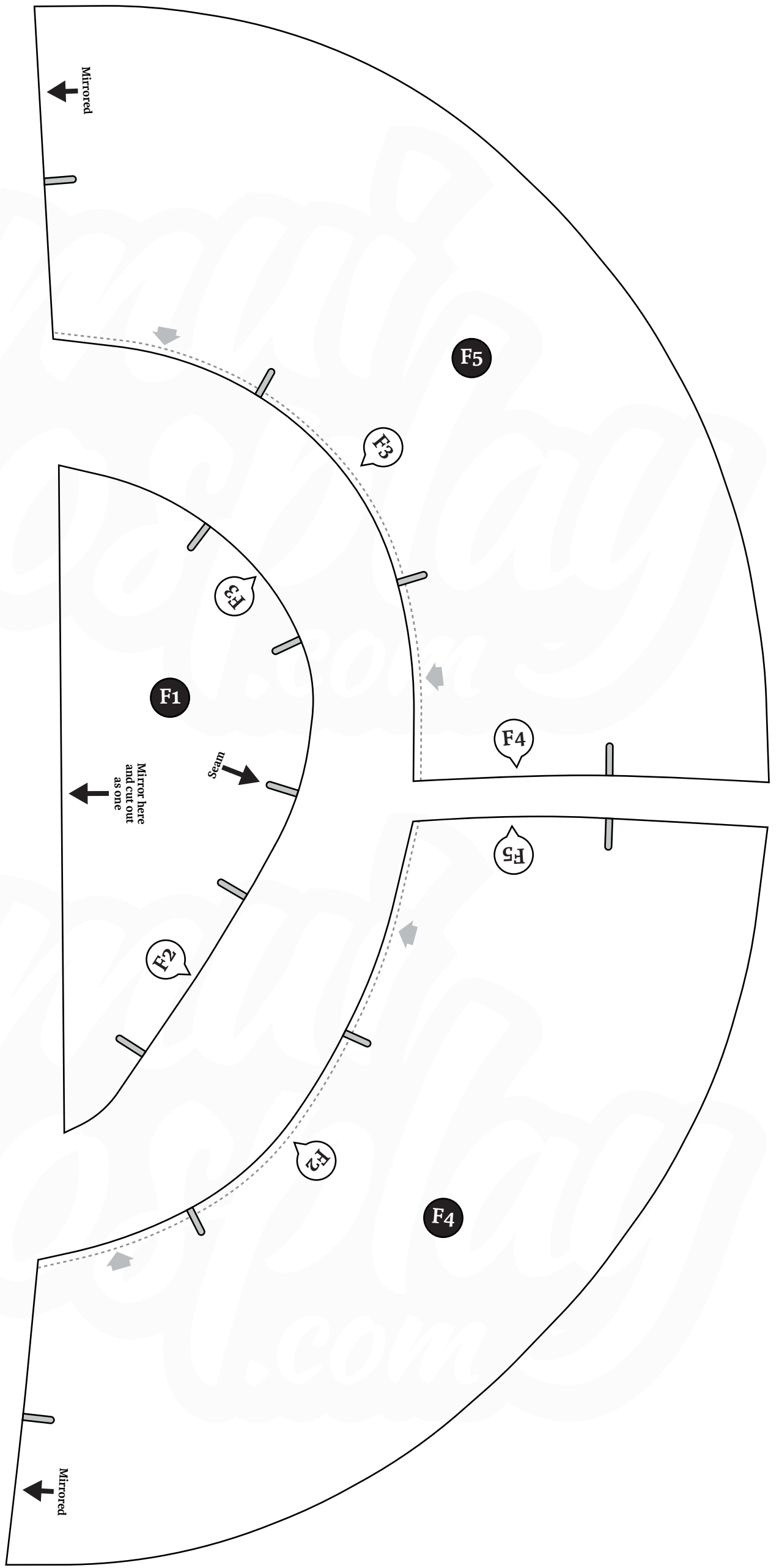
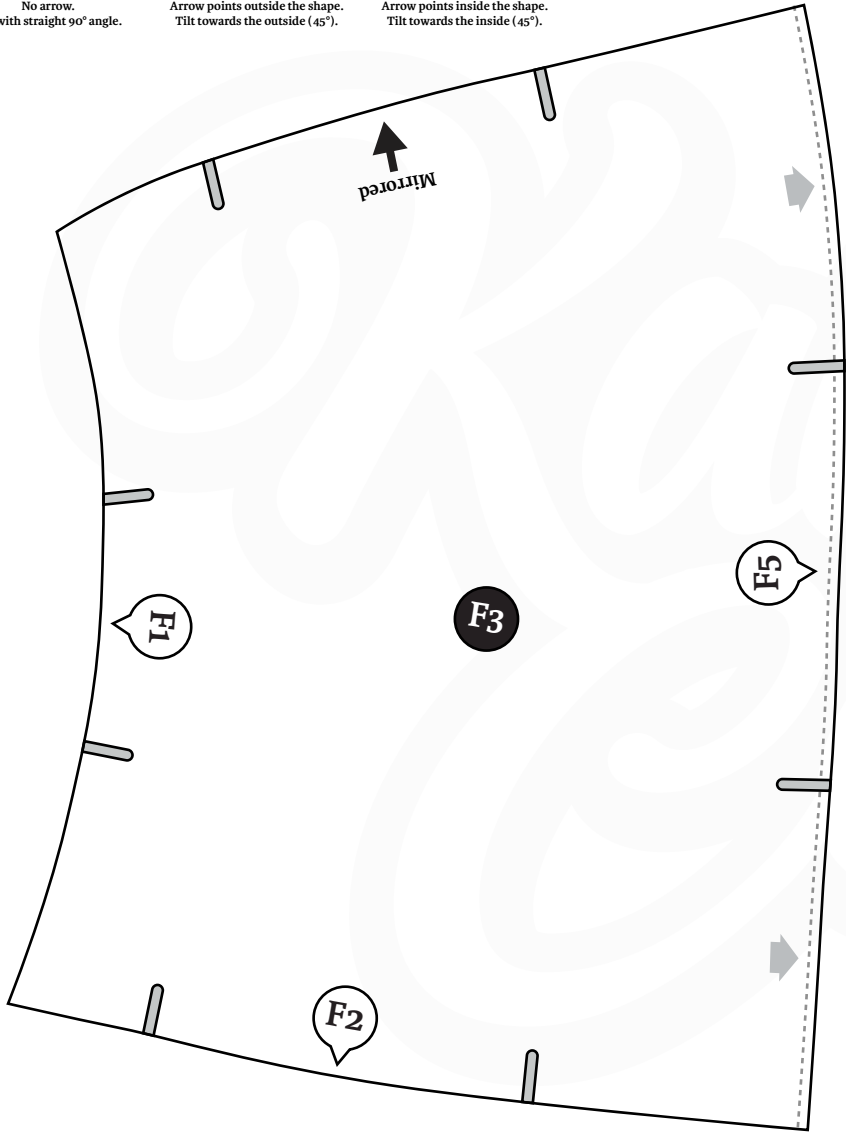
No arrow.
Cut with straight 90° angle.



Arrow points outside the shape.
Tilt towards the outside (45°).



Arrow points inside the shape.
Tilt towards the inside (45°).



I really hope these patterns are an inspiration to you and will help you to create your own awesome prop and costumes!

You can visit our daily progress on Facebook:
www.facebook.com/kamuicos

Please also visit our Website:
www.kamuicosplay.com

More useful armor making stuff in our shop:
<http://www.kamuicosplay.com/store>

Please also check our YouTube Channel for more video tutorials:
<https://www.youtube.com/kamuicosplayofficial>



Copyright © 2021 by Svetlana & Benjamin Schwarz.

All rights reserved. It's not allowed to copy, reproduce or resell these patterns nor any part thereof without the express written permission of Kamui Cosplay. We do not claim liability or take responsibility for any harm or damages caused while crafting. Please work carefully and responsibly.

First Release, 2021, Germany

Creator and Layout: Benjamin Schwarz

www.kamuicosplay.com