



HELMET PATTERN COLLECTION 2

INCLUDES 5 DESIGNS

Helmet Pattern Collection 2

Kettle Helmet (Page 4)



Morion Helmet (Page 6)



Crusader Helmet (Page 8)



Nordic Helmet (Page 10)



Spartan Helmet (Page 12)

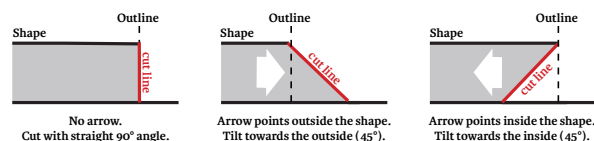


Instructions:

All patterns were made with **5mm low density EVA foam** and glued with **contact cement**.

Edit the shapes and add more layers or foam clay for even more variations!

Some lines are marked with an arrow. These lines must be cut at an angle. Tilt either inside or outside your shape based on this drawing:



How to scale and print these patterns

Hi there! To properly print these pattern I recommend using the free [Adobe Acrobat Reader](#). Other software works as well of course, as long as it offers similar printing options.

Now open the pattern pdf file and go to **file -> print** to see the printing options window.

Do **not** select "Size" with the "fit" or "Actual size" option. This will lead to your patterns being printed out either too small or cut off (see right image).

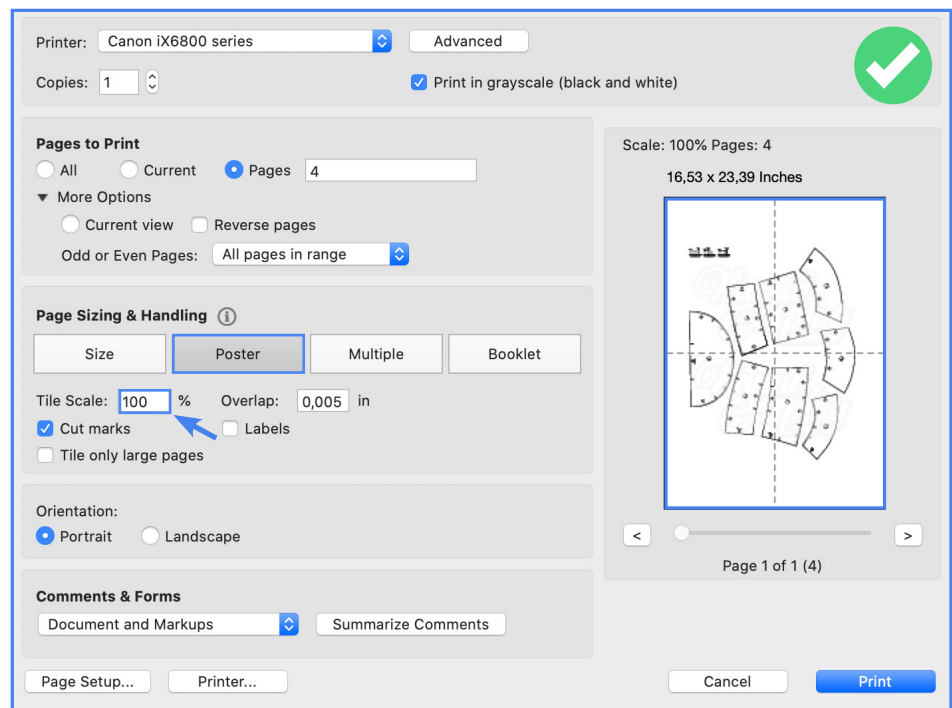
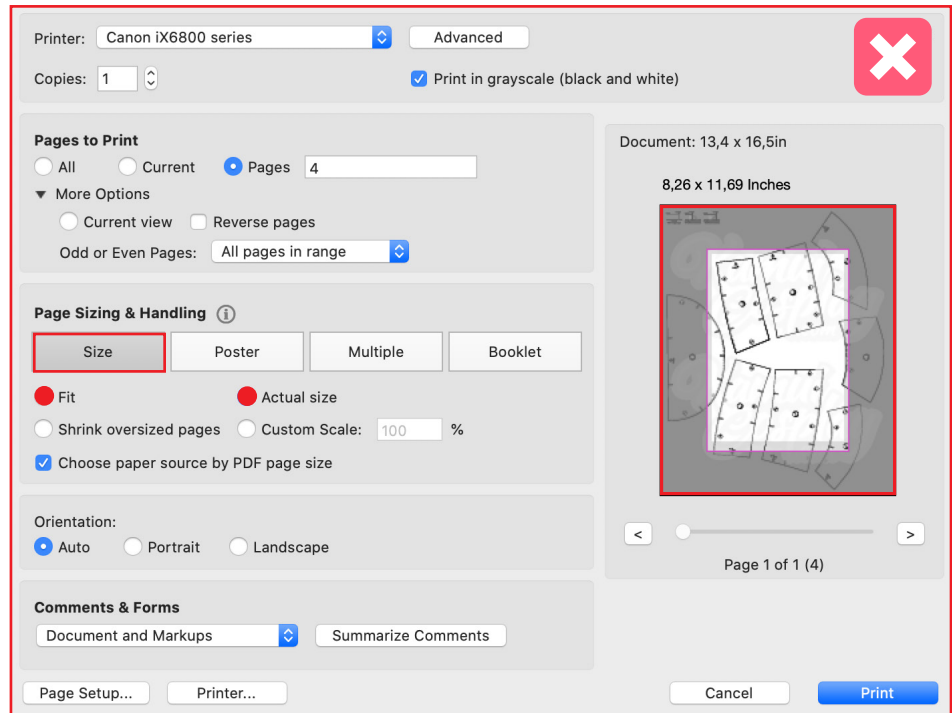
-> Instead select "Poster"!

Here you can set your "Scale" as large or small as you need and Acrobat will automatically split your patterns over multiple pages!

All my patterns are designed to fit myself (Svetlana) at 100% scale (I have a 56cm, 22inch head circumference). Just change the scale if you want to print them smaller or larger.

Now you can print them out and tape the individual pages together!

Have fun crafting! ❤️



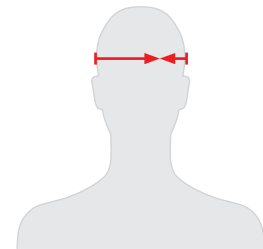
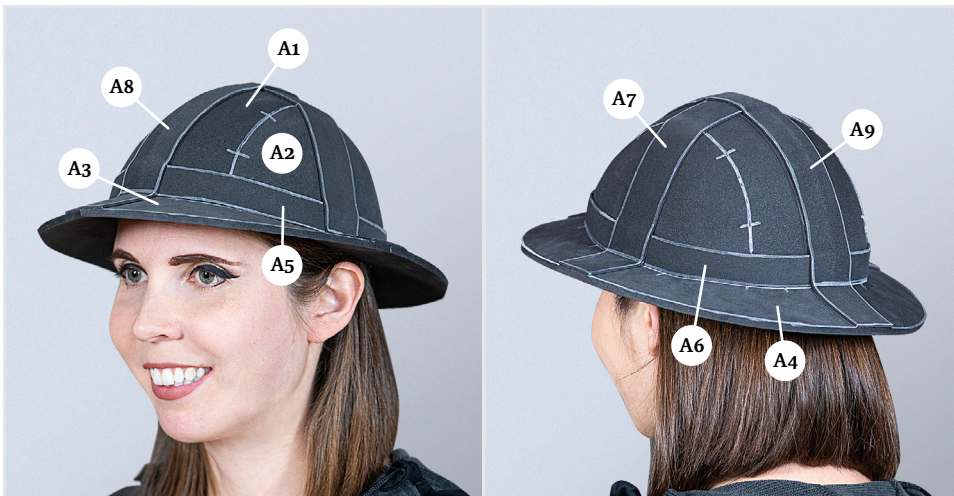
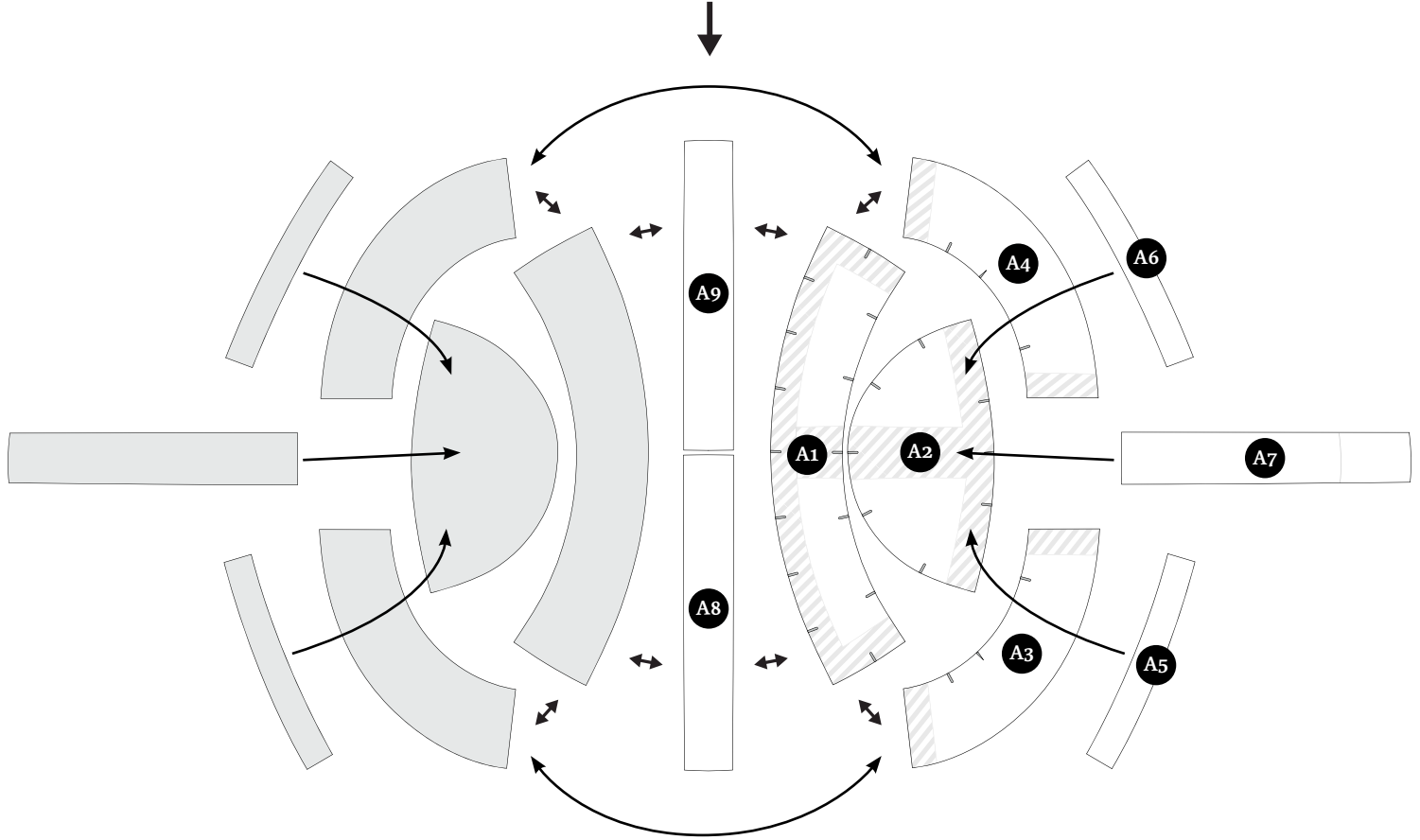
Download the (free) Adobe Acrobat Reader from: <https://get.adobe.com/reader/>

If you need help building these patterns, check out the instructional video I uploaded to my website: kamuicosplay.com/product/foamhelmet2/

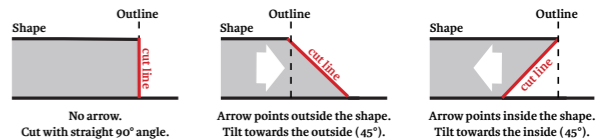
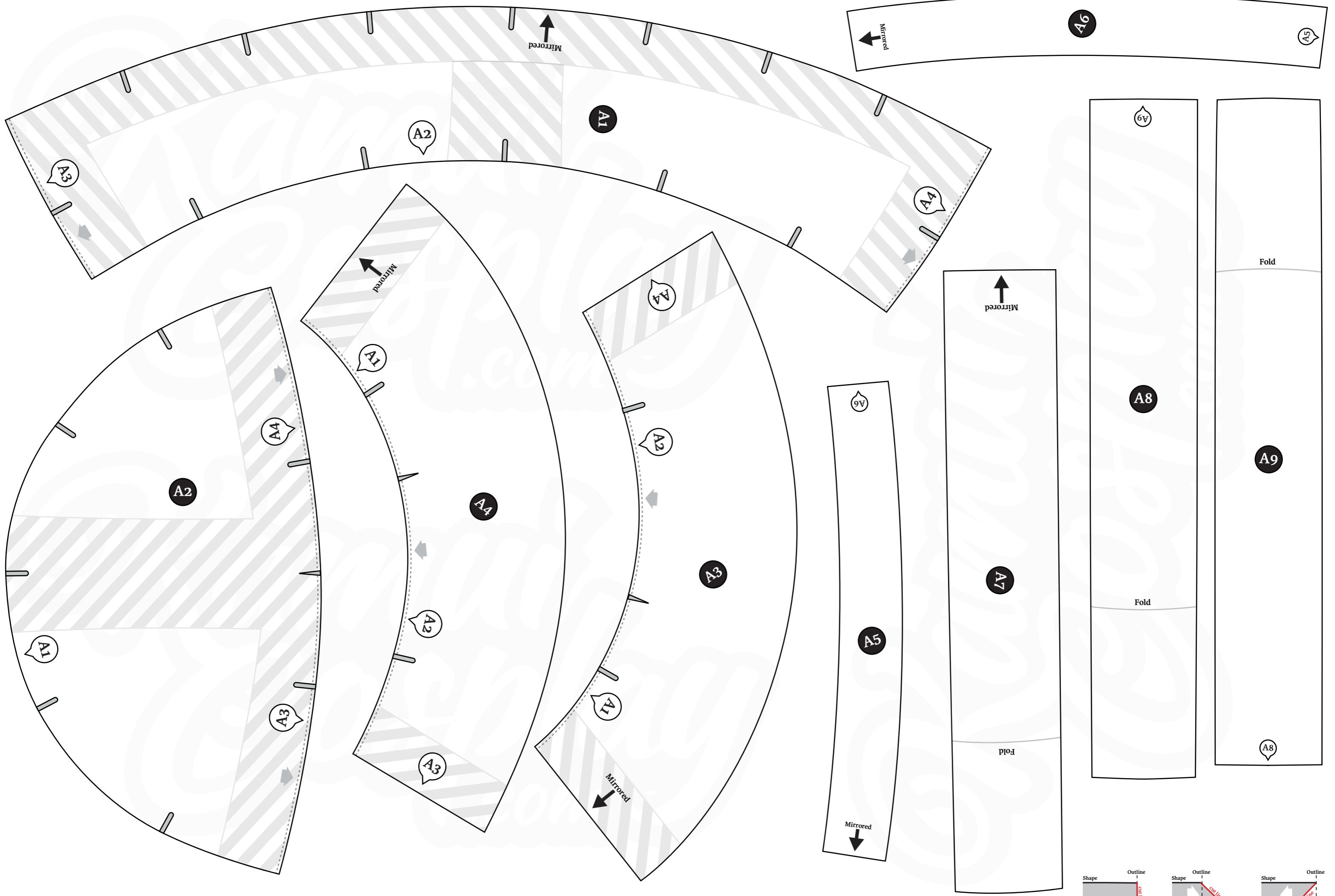
Kettle Helmet Pattern

(print page 5)

Mirror Here



Circumference in cm	Print in Scale	Circumference in inch
44.8 cm	80 %	17.6 inch
50.1 cm	90 %	19.7 inch
56 cm	100 %	22 inch
61.6 cm	110 %	24.3 inch
67.2 cm	120 %	26.5 inch



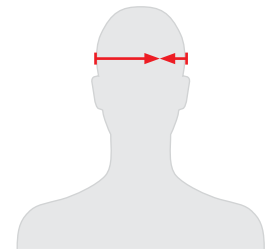
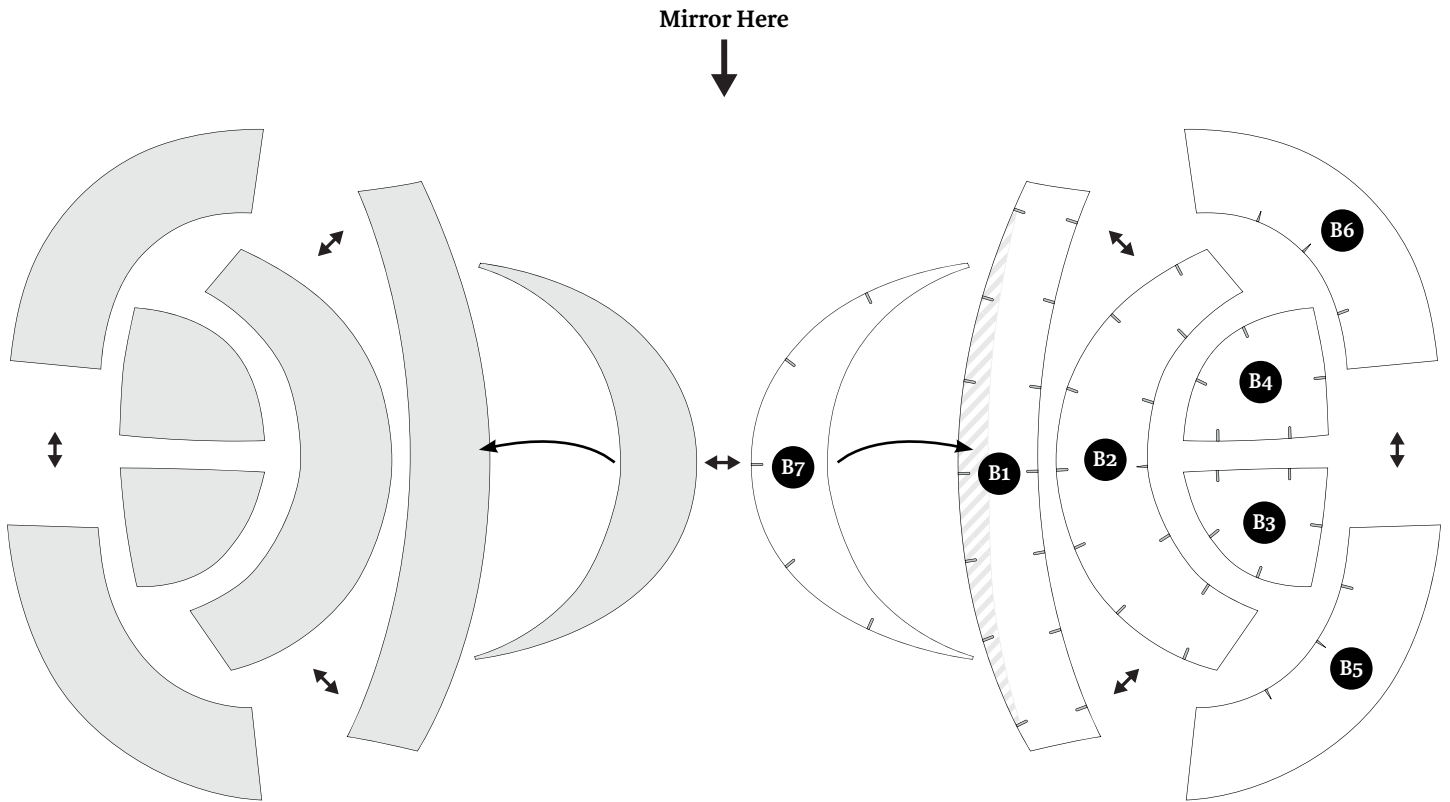
No arrow. Cut with straight 90° angle.

Arrow points outside the shape. Tilt towards the outside (45°).

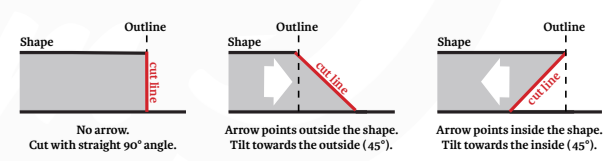
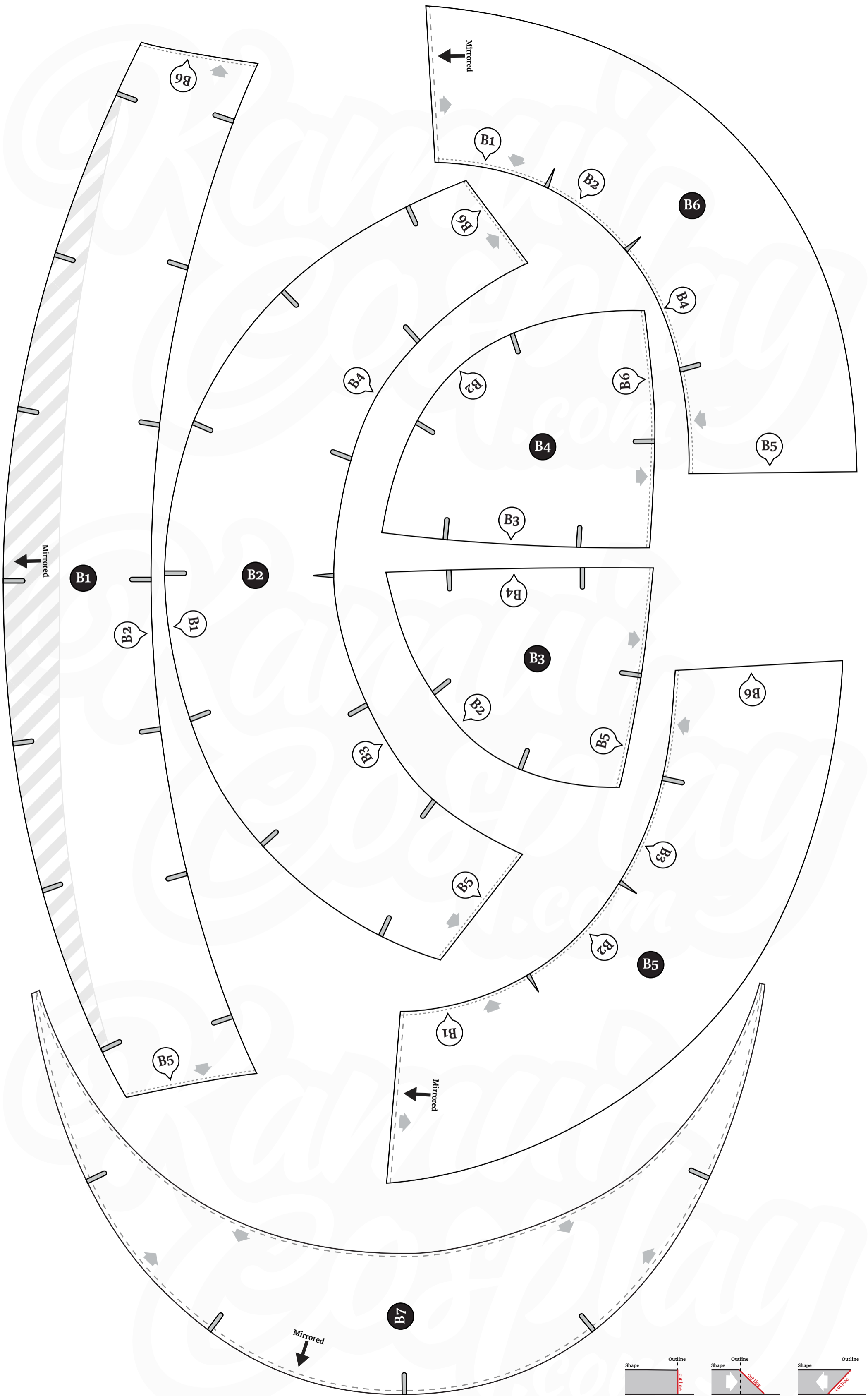
Arrow points inside the shape. Tilt towards the inside (45°).

Morion Helmet Pattern

(print page 7)



Circumference in cm	Print in Scale	Circumference in inch
44.8 cm	80 %	17.6 inch
50.1 cm	90 %	19.7 inch
56 cm	100 %	22 inch
61.6 cm	110 %	24.3 inch
67.2 cm	120 %	26.5 inch



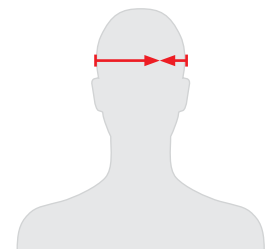
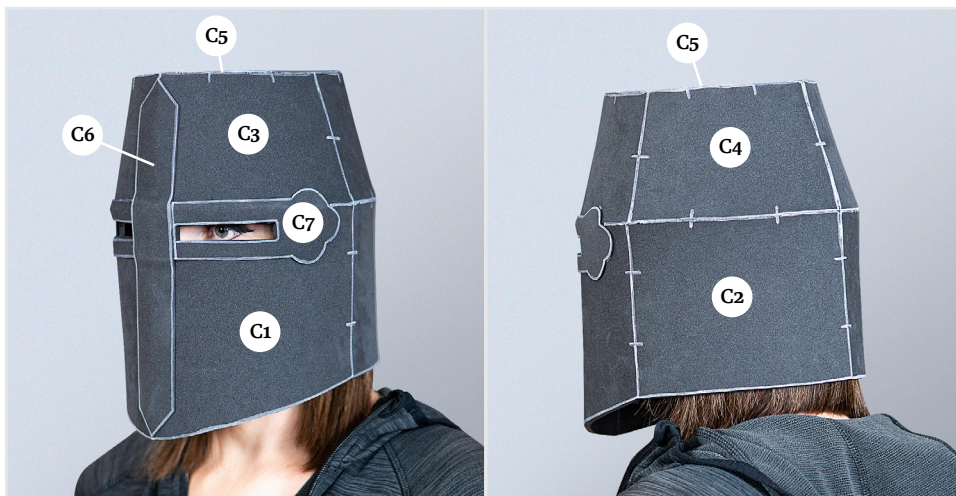
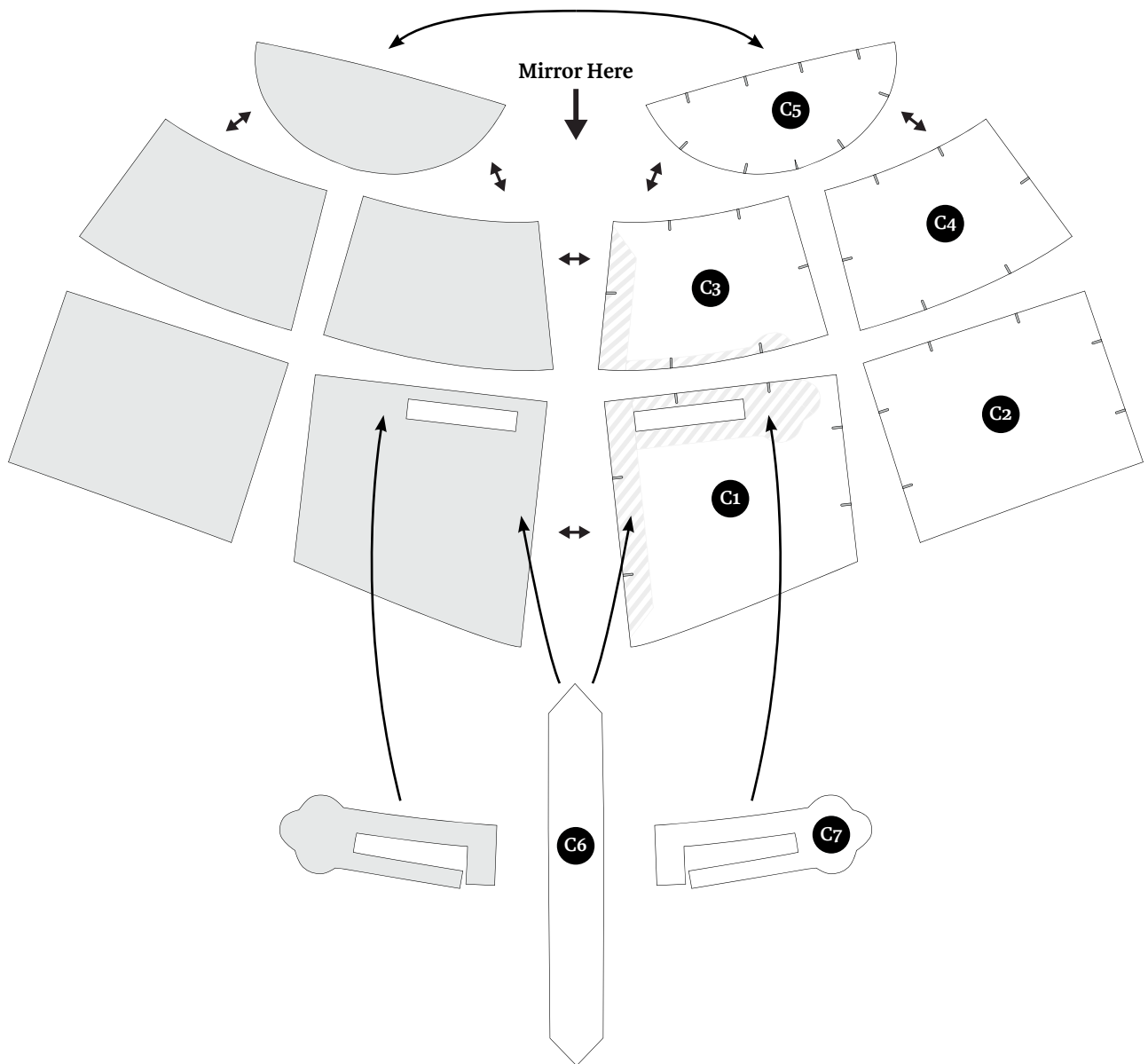
No arrow.
Cut with straight 90° angle.

Arrow points outside the shape.
Tilt towards the outside (45°).

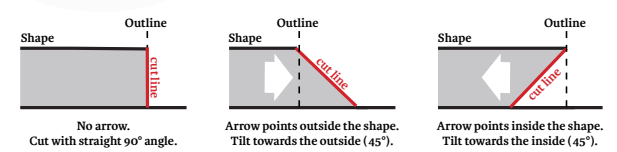
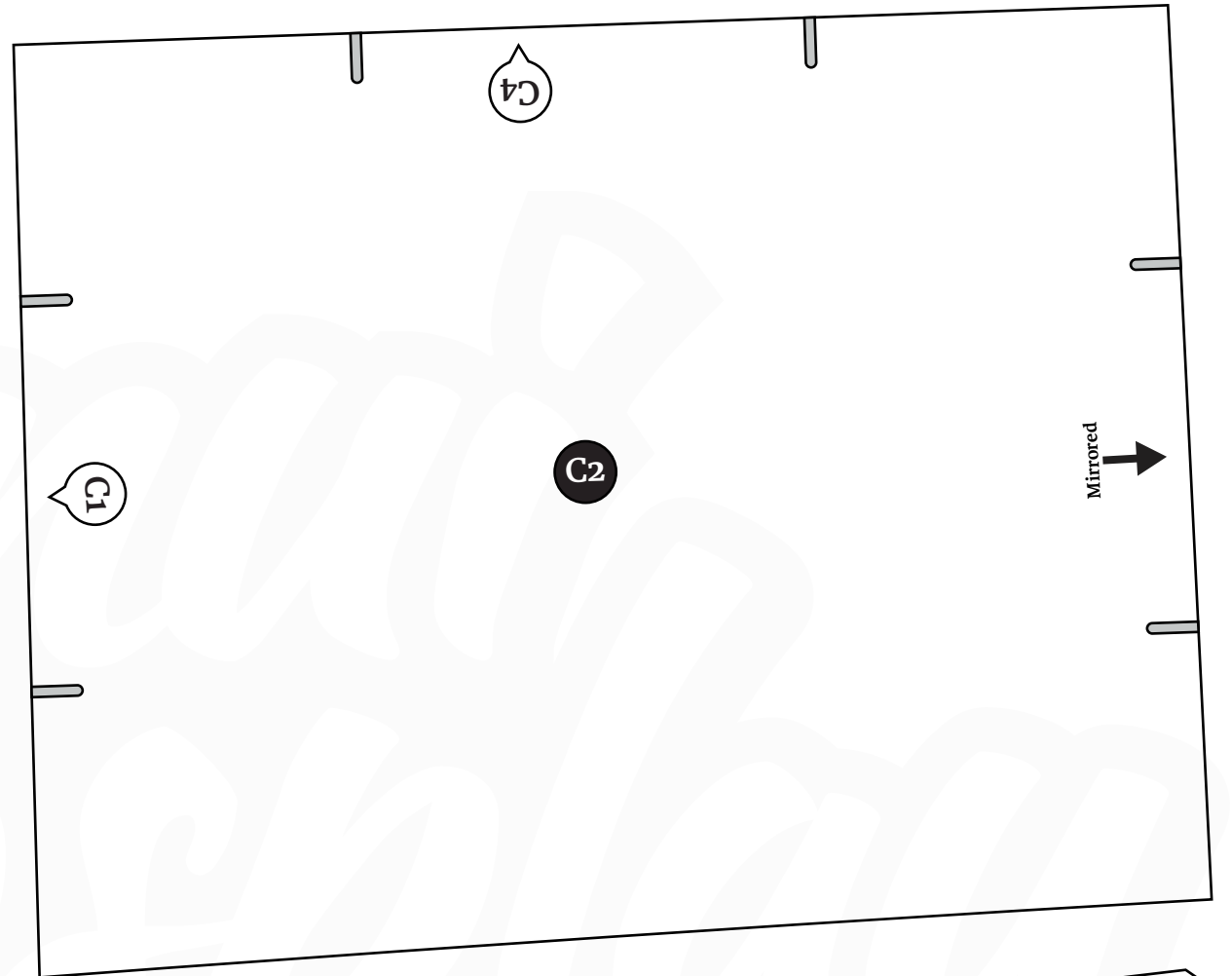
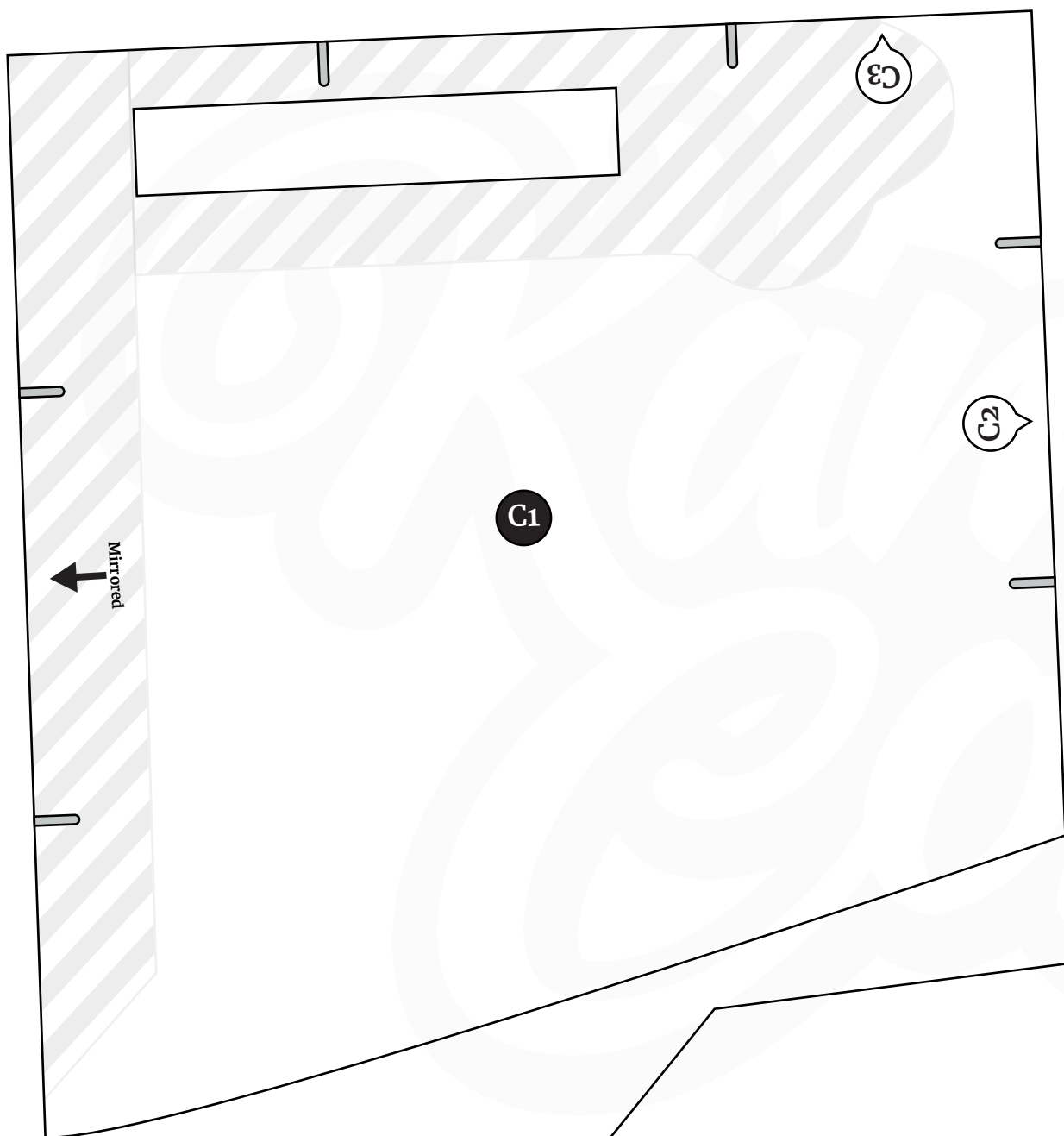
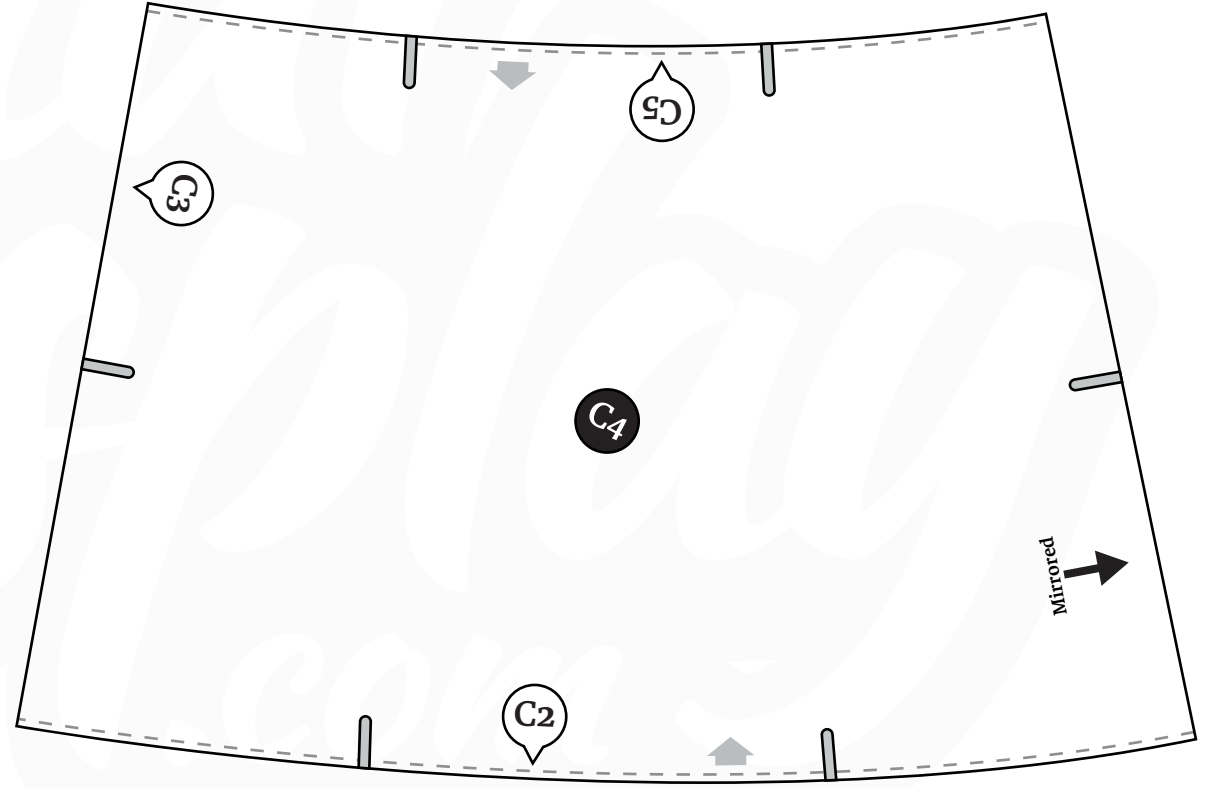
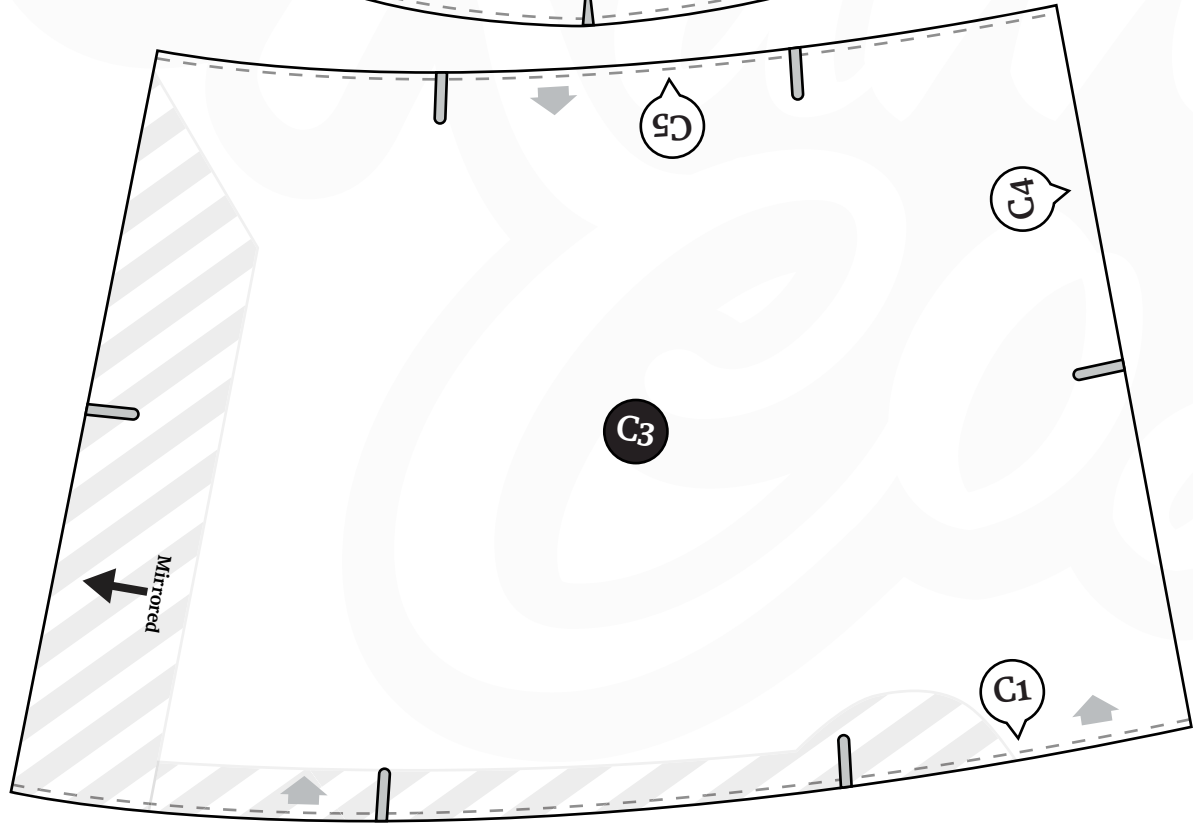
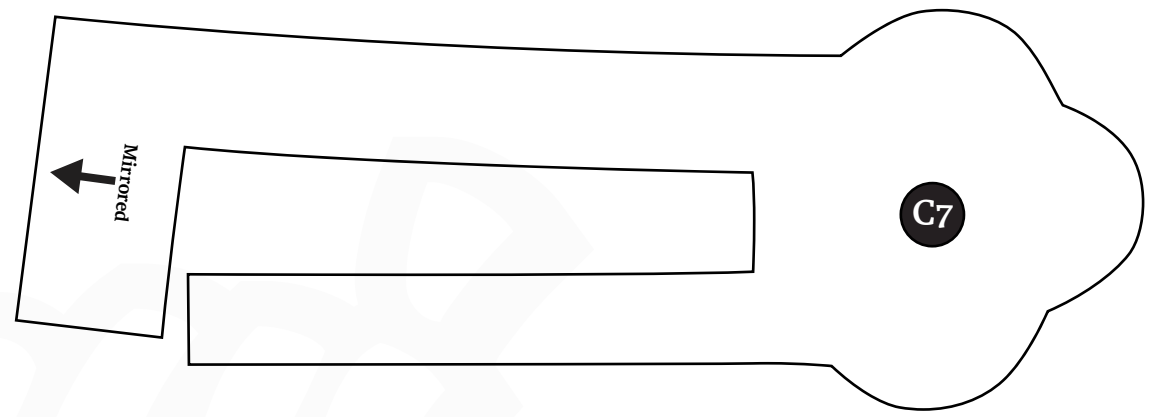
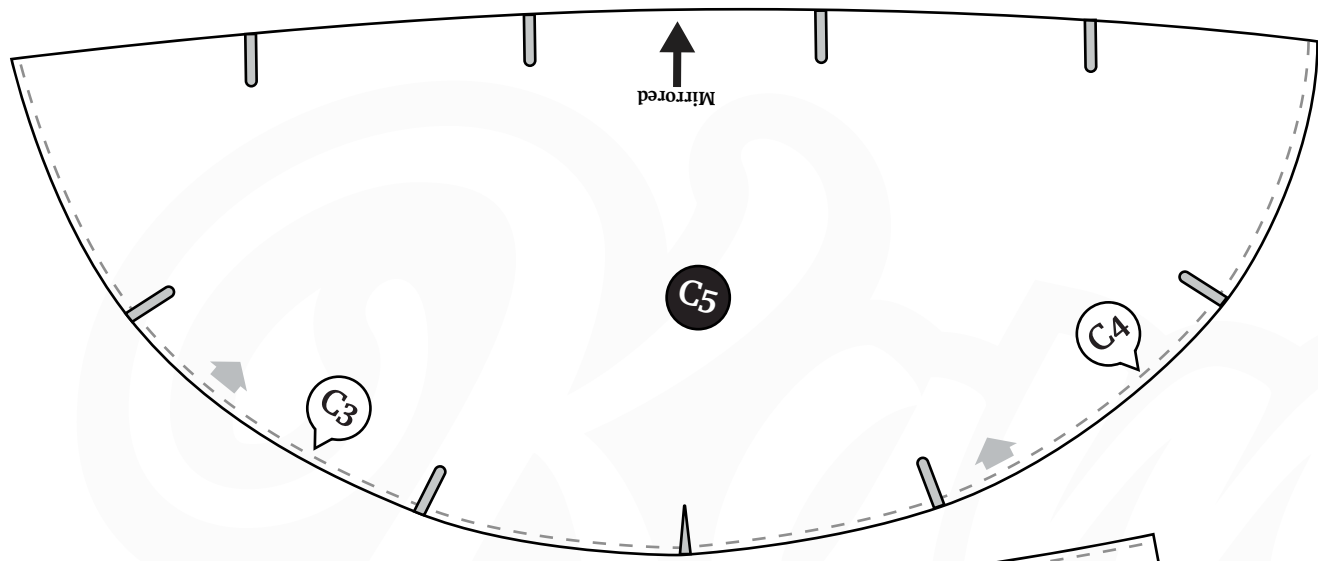
Arrow points inside the shape.
Tilt towards the inside (45°).

Crusader Helmet Pattern

(print page 9)

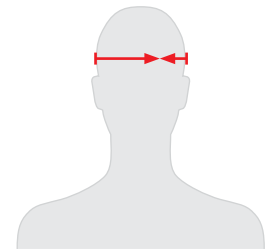
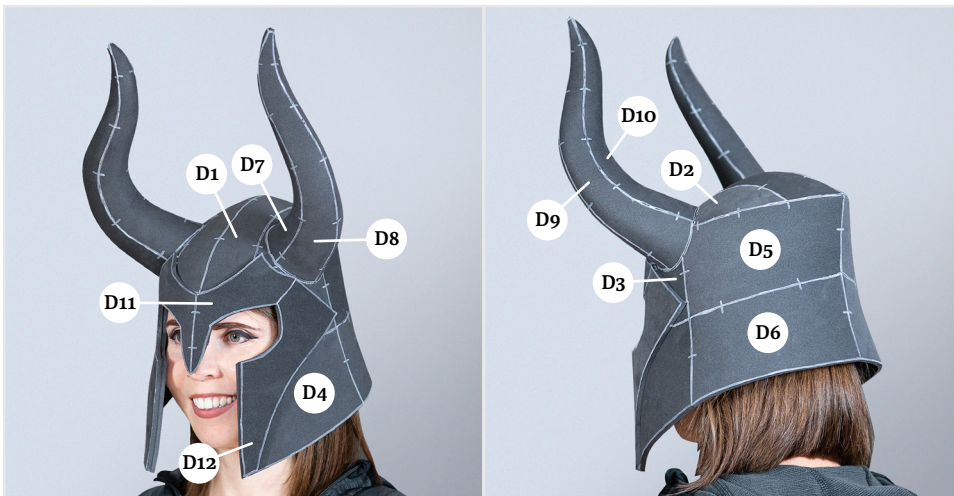
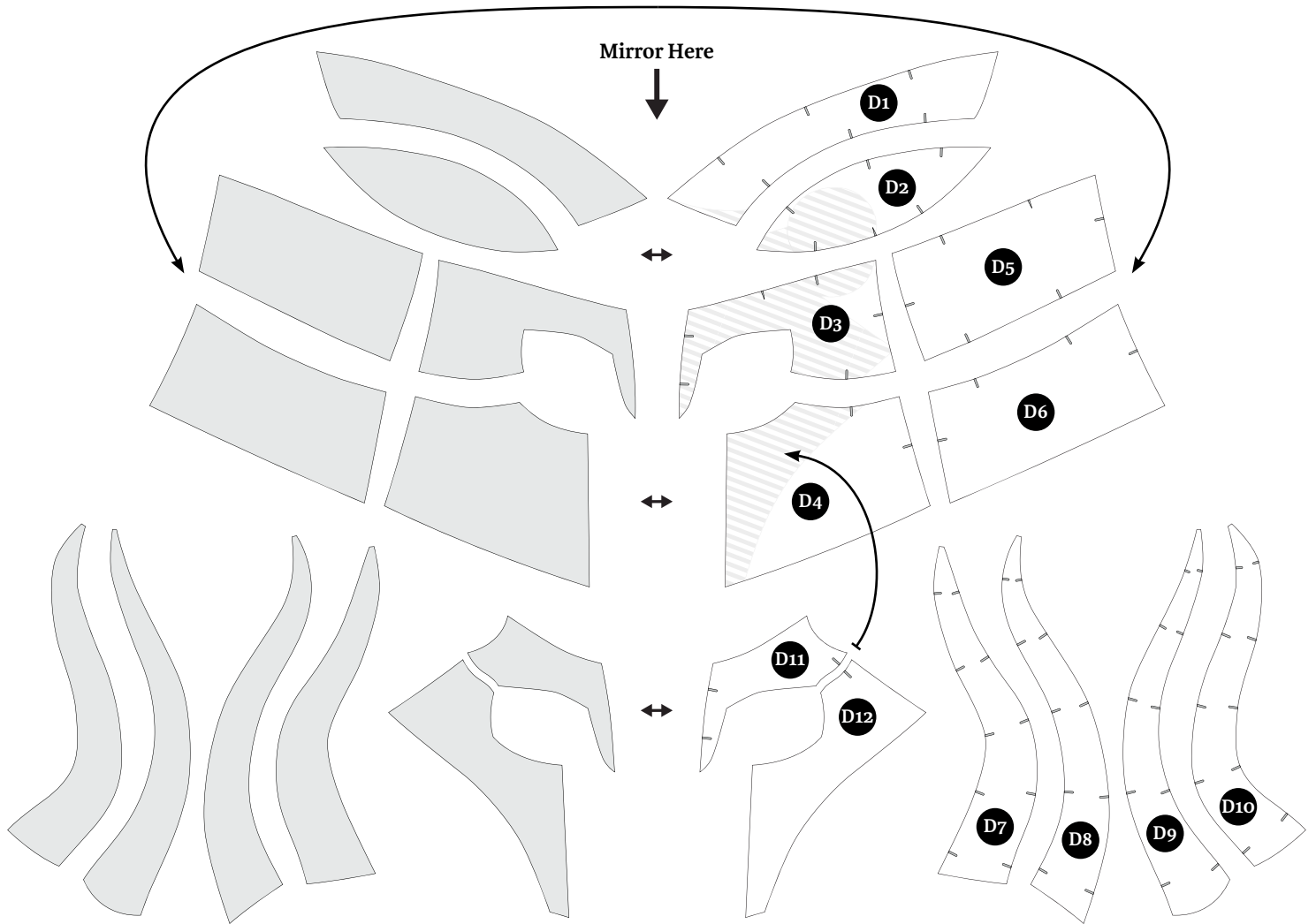


Circumference in cm	Print in Scale	Circumference in inch
44.8 cm	80 %	17.6 inch
50.1 cm	90 %	19.7 inch
56 cm	100 %	22 inch
61.6 cm	110 %	24.3 inch
67.2 cm	120 %	26.5 inch

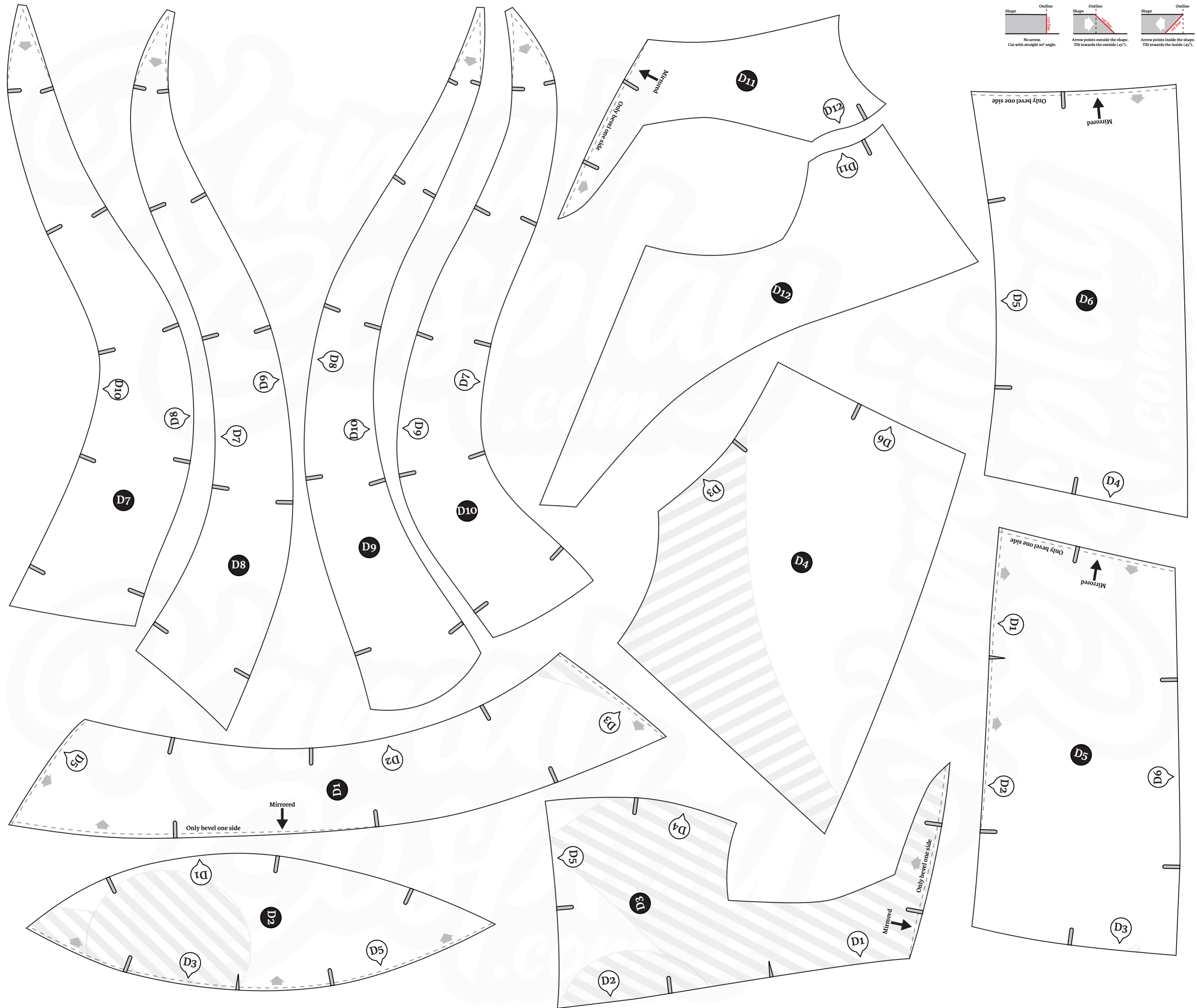
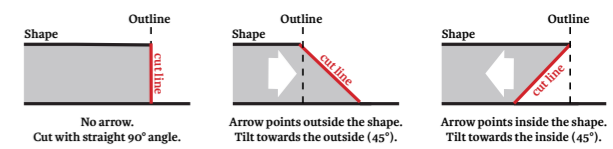


Nordic Helmet Pattern

(print page 11)

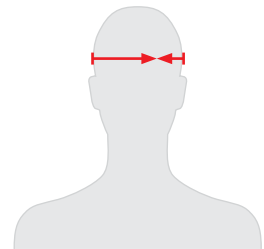
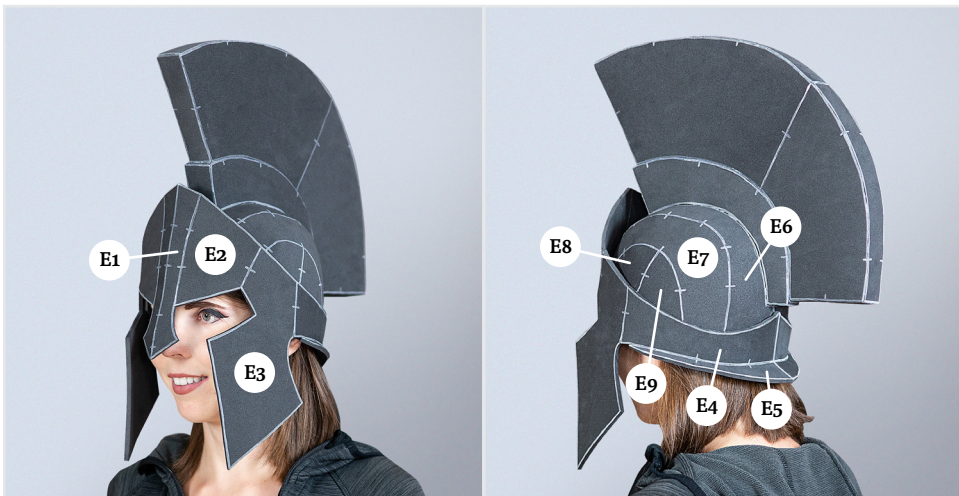
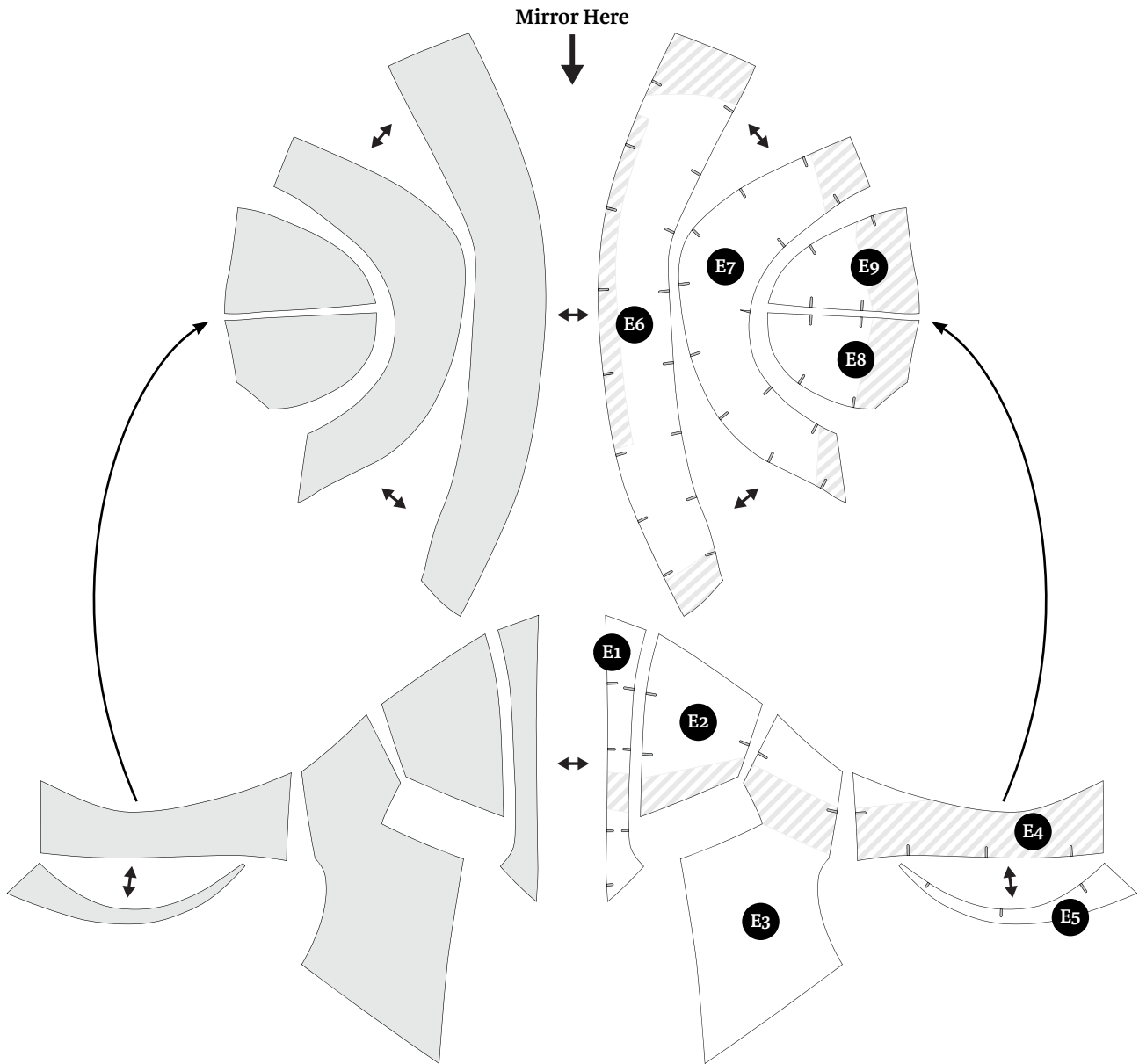


Circumference in cm	Print in Scale	Circumference in inch
44.8 cm	80 %	17.6 inch
50.1 cm	90 %	19.7 inch
56 cm	100 %	22 inch
61.6 cm	110 %	24.3 inch
67.2 cm	120 %	26.5 inch



Spartan Helmet Pattern

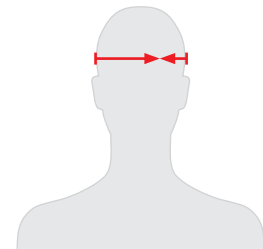
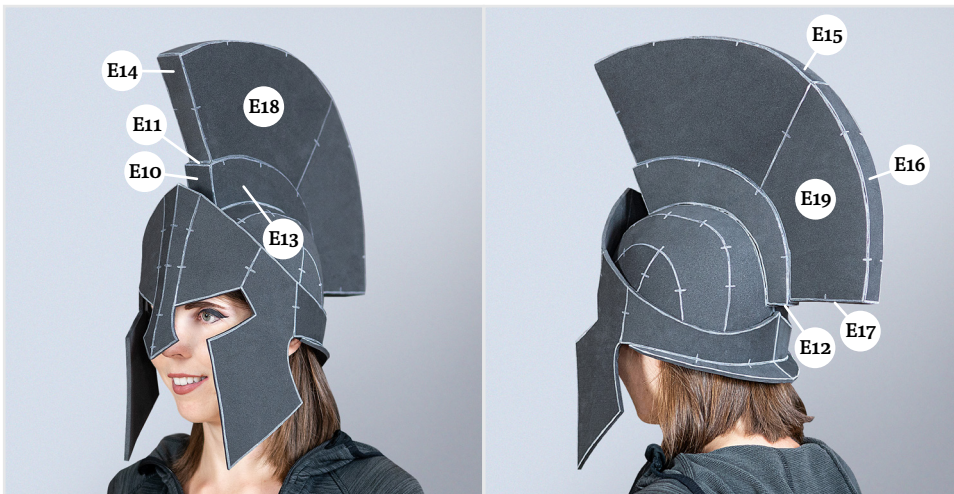
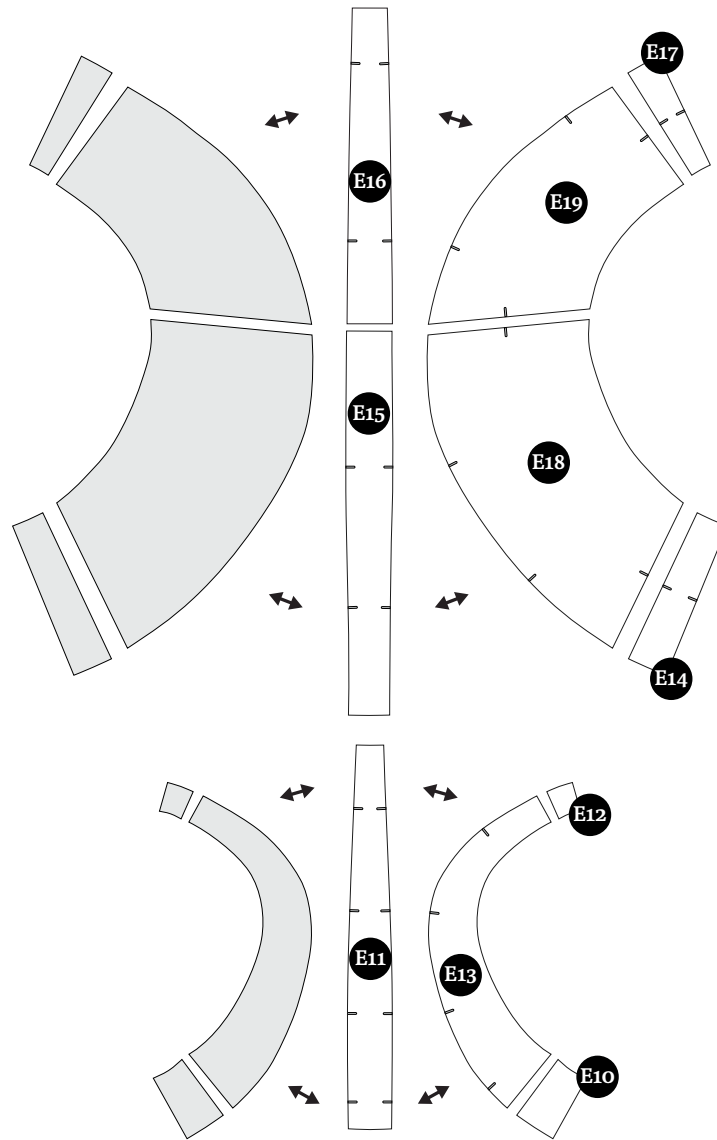
(print page 14)



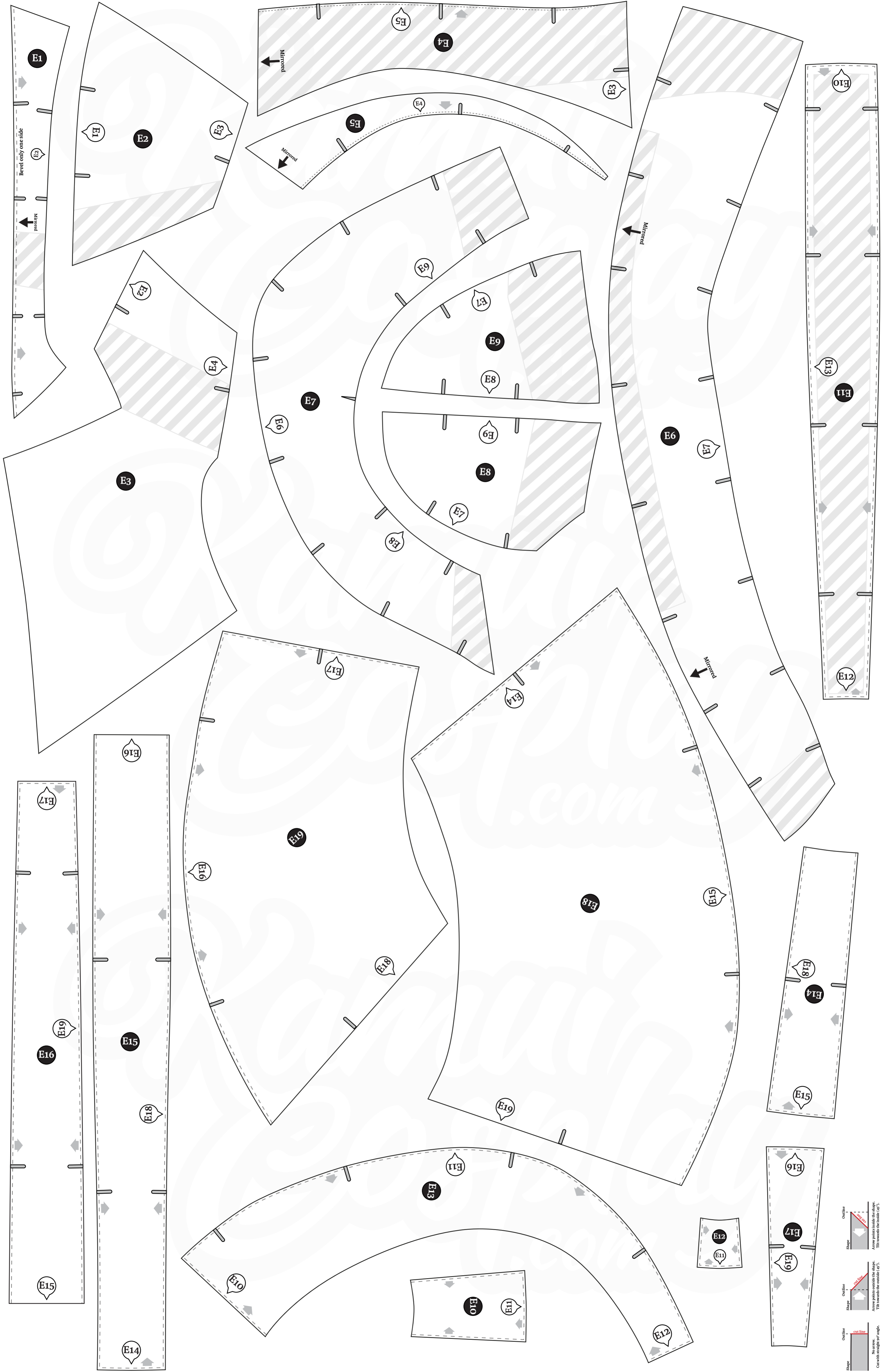
Circumference in cm	Print in Scale	Circumference in inch
44.8 cm	80 %	17.6 inch
50.1 cm	90 %	19.7 inch
56 cm	100 %	22 inch
61.6 cm	110 %	24.3 inch
67.2 cm	120 %	26.5 inch

Spartan Helmet Pattern

(print page 14)



Circumference in cm	Print in Scale	Circumference in inch
44.8 cm	80 %	17.6 inch
50.1 cm	90 %	19.7 inch
56 cm	100 %	22 inch
61.6 cm	110 %	24.3 inch
67.2 cm	120 %	26.5 inch



Outline
shape
No seam.
Cut with an angle per angle.

Outline
shape
Arrow points outside the shape.
Tilt towards the outside (45°).

Outline
shape
Arrow points inside the shape.
Tilt towards the inside (45°).

I hope these patterns are useful and will help you create your own awesome costumes!

Check out our website for more tutorials, write-ups and videos.

www.kamuicosplay.com

Do you have a question about a costume or prop you want to create? Join our community group on Facebook:

facebook.com/groups/kamuicosplaycommunity

You can always find us on:

facebook.com/kamuicos

instagram.com/kamuicosplay

youtube.com/kamuicosplayofficial

twitter.com/kamuicosplay

And if you like our videos you can support us on:

patreon.com/kamuicosplay



Copyright © 2021 by Svetlana & Benjamin Schwarz.

All rights reserved. It's not allowed to copy, reproduce or resell these patterns nor any part thereof without the express written permission of Kamui Cosplay. We do not claim liability or take responsibility for any harm or damages caused while crafting. Please work carefully and responsibly.

First Release, 2021, Germany

Creator and Layout: Benjamin Schwarz

www.kamuicosplay.com