



SEWING FOR BEGINNERS

MAKE YOUR OWN COSTUME STEP BY STEP

Naraku Brock

SEWING FOR BEGINNERS

MAKE YOUR OWN COSTUME STEP BY STEP

Naraku Brock

Sewing for Beginners
©2018 Naraku Brock

fuchsfeuer.shop@web.de
www.narakucostumes.com

Autor: Naraku Brock

Photo:
Naraku Brock
Svetlana Quindt Cover, P. 4
Calssara Cosplay P. 5, 86-87
Pasta Cosplay P. 5, 47

INDEX

Prolog	4
Materials	6
Sewing Utensils	8
Fabrics	14
Needles	18
Presser feet	20
Techniques	22
By Hand	24
By Machine	27
Pattern	30
Taking Measurements	32
Paper Pattern	34
Tape yourself	38
Pin yourself	40
Preparation	42
Tailoring	44
How to make: Girl	48
Skirt	50
Corsage	58
Jacket	62
How to make: Boy	66
Pants	68
Shirt	74
Vest	82
Closing Words	87

NARAKU BROCK

My name is Naraku Brock and I am usually a fairy in the costume scene. Due to my education and my studies as a goldsmith with a bachelor's degree in jewelery design, I developed an interest in detailed costumes with pearls, jewelery and elaborate costume accessoires.

It all started in 2001 with my first costume at a con I sewed one year before. Only a few years later, I began sharing my experiences in workshops, participating in contests and even sewing costumes for others.

Over 15 years later, with more than 150 costumes, I'm actively involved with workshops or as a juror around the world and won various prizes at championships and European competitions.

What began as a little hobby, now is a huge part of my life.

Find me here:

www.narakucostumes.de

www.instagram.com/narakubrock

www.twitter.com/NarakuCostumes



ABOUT THIS BOOK

This book is for all costume lovers, cosplayers and creatives who want to get into the sewing world. Even for advanced users, many chapters can be helpful.

Here you will find all the basics of sewing; important materials and steps that help you to sew your first costumes or improve your sewing technique.n.

Step by step, you will learn how a costume is created, with many helpful tips, with use of pictures in order to show these tips and tricks better.

→ here you can buy my book series ←
<http://www.narakucostumes.com>



MATERIALS



30 ASSORTED NEEDLES

straight grain
DOLNEBAJ
HINTB

Fadenlauf
straight grain
DOLNEBAJ HINTB

200 m

78
79
80
81
82
83
84
85
86
87
88
89
90
91
92
93
94
95
96
97
98
99
100

SEWING UTENSILS

The world of sewing can be quite daunting for an inexperienced person. As soon as you go into a sewing shop, you will be faced by the vast array of materials and all their variations!

But what do you really need and what are the individual utensils for?

This chapter will help ensure you are successful with your own sewing projects, and details the basic equipment with the most necessary need-

les and machine feet for sewing. This guide will also cover cutting tools, marking aids, needles and yarn.

To have fun and success whilst sewing, a good rule of thumb is that utensils such as scissors, rulers, etc. should be of good quality. This doesn't mean that it must be expensive, though! You can definitely find affordable equipment if you look for it.





CUTTING TOOLS

Scissors are one of the most important tools for sewing. They are available in different sizes, shapes, and materials.

Though there is a wide variety, there is only one rule that stands above all others:

Unstitcher

Allows you to quickly cut a seam and are valuable tools for buttonholes.

Thread-/Embroidery Scissors

With short and fine scissor blades, these can cut off fine threads or corners.

AllRound Scissors

You should always have scissors that can lay next to your sewing machine for fast fabric cutting work, if you need it.

Fabric Scissors

Mostly big with long blades. These are ideal for cutting fabric, and come in many variations, and some can be quite heavy!

FABRIC SCISSORS ARE ONLY FOR CUTTING FABRIC!

It is essential that fabric scissors remain sharp, and this is the only way to guarantee long-lasting, working scissors. As a result of this, you can accumulate a lot of scissors and additional tools very quickly.

Paper Scissors

Useful for cutting anything that fabric scissors shouldn't be used for - like paper or cardboard.

Craft Knife

With their sharp blades, they are good for leather, fur, foil, cardboard and paper. If the blade is blunt, you can break it off and get a new sharp tip.



MARKING AIDS

With the aid of different pens you can transfer patterns, markings or inscriptions on fabric and paper.

Pencil

Can be used on paper and paper templates.

Felt tip pen

If a pencil is not strong enough, use a felt-tipped pen.

IMPORTANT: be careful as they can smear and soak through to the fabric. Use it for patterning or on a fabric sample for a pre-test.

Magic Marker

The markings disappear after washing or ironing of the fabric as if by magic.

Tailor's Chalk pen

With the pen you can transfer all markings to the fabric at short time.

Tailor's Chalk

Unlike the pen, you can brush this chalk much more easily from the fabric.

Tip:

Pastel chalk is just as suitable for drawing and marking on fabrics. They exist in dozens of color variations.

The disadvantage: You must not get pastel chalk markings wet, or it can stain the fabric.



NEEDLE

We distinguish between hand sewing, machine sewing and pins, which are available in various types, thicknesses and materials. Using the correct needle prevents damage to the fabric, especially when the tip is blunt.

Top tip:

Have an assortment of different needles handy, so you can quickly replace a broken one.

Machine sewing needle

Many machines use different needles. You will have to find the correct needle pack for your machine when shopping. You can read the properties and strength of the needles on the pack.

Hand sewing needle

It can be bought in small or large packs of different lengths and bottlenecks. Similar to the machine needles, you can read the properties and functions on the packaging.

Pins

They pin pattern pieces and put together fabrics, seams and hems. They are also good for marking distances and fixed points.

Here you can see two pin variations. But watch out: don't get poked!

Safety Pins

These allow you to pull rubber bands, cords or ribbons through stitched drawstrings. They are also very popular at events, to quickly fix a seam if something rips!



THREAD

Not every thread is suitable for every technique and fabric - some yarns require special needles, or should only be used when hand stitching.

As with scissors, you should use good quality thread. Discounted goods are risky for machines, because they snap quickly and you may find your machine gets tangled with fine threads.

Basic cotton thread

They are made of pure cotton and are suitable for all sewing jobs. Very good when you need to dye fabric after it has been sewn.

Polyester thread

Also known as an all-round or universal thread. Is available in matte and glossy.

Metallic thread

These effect threads need a needle with a large needle eye, as otherwise the thread will tear quickly. Very nice for iridescent metallic effects.

Embroidery thread

They stand out from the normal threads by their luster. Ideal for logos, pattern embroidery and decorative stitching.

Overlock thread

Due to the high yarn consumption in an overlock machine (trim machine) these threads are on particularly large coils. They are available in 1000, 2000 and 5000m coils. However, they are also suitable for normal sewing. Some sewing machines have an extra attachment for large coils.

Woolen Yarn

If they are fine and smooth you can use them for handwork like decorative stitching or as a staple replacement.

FABRICS

Different fabrics have to meet many diverse uses and requirements. So light, transparent fabric cannot provide the same effect as an opaque fabric. Due to this variety of fabrics, you must also adopt your techniques and utensils to the

fabric you choose.

Here you will get to know the six most frequently used fabrics. Four of them you can see in the last two major chapters.





COTTON

Cotton is made from pure, natural fibers. It is very popular due to its high versatility, as well as its simplicity to handle and comfort when worn. As it is a natural fiber, it can be dyed easily and quickly, and can stand a variety of strains.

Subgroups:

Terry cloths, Denim, Cord, Twill and Nettle.

Use:

T-shirts, shirts, blouses, dresses, jeans, home textiles



TAFFETA

Taffeta was originally made from natural animal fibers, and belongs in the same fabric family as silk. Most of today's taffeta fabrics are made from synthetic chemical fibers.

The matte, shimmering luster is ideal for evening-dresses or costumes with a more noble look.

Taffeta is also available as an embroidered variation. Typically, taffeta will rustle softly when it moves.

Use:

festive or historical clothing, outerwear, decorations, frills and ruffles



POLYESTER

Unlike cotton, polyester is made from synthetic fibers, however many varieties are mixed with other materials such as cotton. The classic polyester is also very popular as it can be processed well, is very durable, tear resistant, and is light and shape resistant.

Use:

hero costumes, capes, sportswear, swimwear, dresses

WARNING: It melts at high temperatures, so be careful around open flames, or when ironing.



JERSEY

A collective term for stretchy, wrinkle-free and very soft materials. These are usually made of wool, cotton, silk, or mixed fabrics and provide a comfortable fit that is ideal for tight-fitting clothing. A disadvantage to this fabric is that cut edges tend to curl.

Use:

T-shirts, tops, dresses, sportswear, hero costumes



PLEATHER

A more affordable alternative to real leather whilst maintaining similar characteristics. The cut edges do not fray, and therefore do not need to be seamed, and it can be cleaned by washing or brushing gently. The quality and price of pleather is critical to avoid wear and tear on the surface.

Use: gloves, belts, boots, coats, armor and weapons.

WARNING: You will need a special press-foot (Teflon) to sew pleather on a machine.



FAKE FUR

Synthetic, or faux, fur differs from real fur primarily by the fabric to which the hair (Pile) is knotted. It can be made from natural or synthetic fibers and maintains a very similar appearance to real fur, however it is important to pay attention to the Pile direction when sewing.

Use: for details on clothing, coats, bags, hats and more.

NEEDLE

In order to achieve success with sewing, you must pay attention to your needle and swap it if necessary. There are many reasons you may need to change your needle, including the different types of fabric you use as well as the quality of your thread and needles.

Note

If you find that you have holes in your fabric when sewing, if your fabric is pressed into the machine, or if your sewn seams are not neat and

If you want to adjust your needle size to the fabric, you can read the thicknesses on the package as well as on the needle itself:

- For thin, fine fabrics: 60, 70, 75
- For cotton and similar: 80 or 90
- For heavy, thick fabrics: 100, 110, 120

clean, then you may have a blunt needle and will need to change it.



1 Universal needle

Also known as the standard needle, this is suitable for all regular sewing on many types of fabric. If you check the tip of the needle from time to time to make sure it has not blunted, then you can work very happily with this type of needle.

2 Metallic needle

It is used for embroidery and sewing with metallic threads. An enlarged and specially ground needle eye prevents twisting and tearing of the thread.

3 Jersey needle

This needle has a rounded needle tip. It punctures into the mesh spaces of the fabric and prevents small loops in the fabric.

4 Twin needle

Twin needles can only be used with a suitable needle plate and machine foot. Unfortunately, not every household machine can use these. They are very good for parallel stitching and are perfect for decorative stitches and seams.



NEEDLE PACKING

There are 5 or 10 needles per box. If needles of different types are moved into another type's box, then it is important that you correct the information on the packaging.

For the example pictured here:

130/705 = Assignment of the needle

H = hollow flute (holding the needle)

120/19 = european/american Needle thickness

Tip:

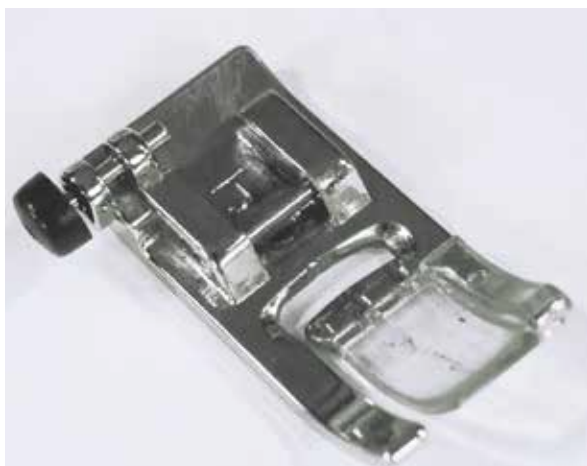
Additionally, if your thread is constantly snapping, then you may also have a blunt needle, or be using the wrong needle for the job.

PRESSER FEET

All sewing machines can use a selection of standard sewing feet, which are necessary to perform basic sewing work, such as stitching, seaming, buttonholes, or zipper. These sewing

feet are the most important types for sewing your first costumes.

Please note that different machines may have different looking presser feet.



BASIC FOOT

This is the most commonly used foot as, in addition to normal stitching, you can also perform a zigzag and some other decorative stitches. You are also afforded a perfect view of the stitching and needle itself to help guide you.



APPLIQUÉ FOOT

This presser foot has a wider open area than the basic foot to give an even better view of the seam. This foot is very good for stitching appliqué and zigzag stitches.



ZIPPER FOOT

It serves primarily to sew zippers. It can be attached as required to the right or left of the presser foot holder and sew so close to the tooth edge of the zipper.



TEFLON FOOT

Due to the special coating on the underside of this foot, it is the best one to use when sewing difficult materials like pleather or coated fabrics.



BUTTONHOLE FOOT

This presser foot varies the most in terms of looks. With this foot you can pinch the desired button in the back of the rail area, thus helping you to create the exact size for the buttonhole.

This foot is also suitable when you are doing patching work.

TECHNIQUES



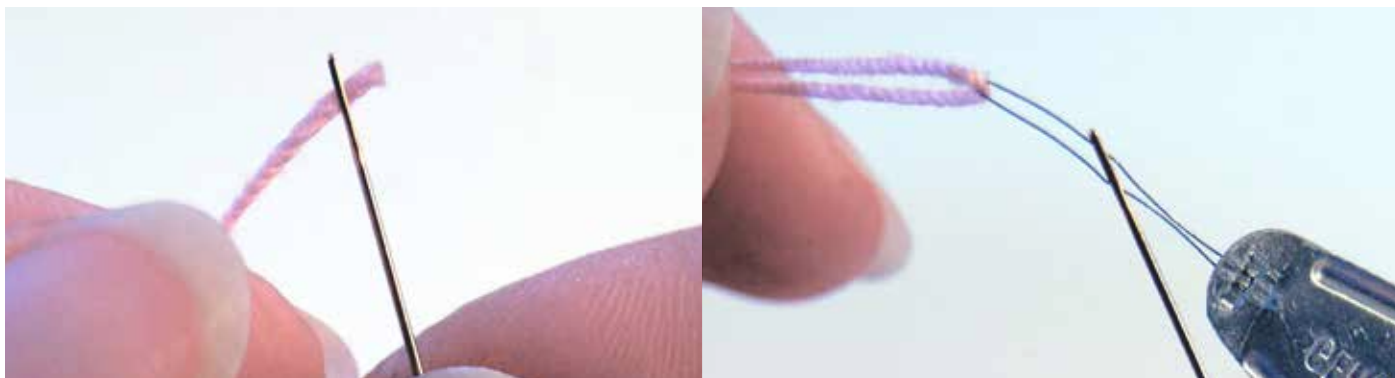
BY HAND

The rise of modern sewing machines has made hand-sewing much rarer. Even so, it is still an important part of sewing, especially when you need to do small jobs such as attaching buttons or doing decorative stitches.

When doing hand stitching, it is very useful to have an embroidery frame for your fabric. The

frame has the fabric stretched tightly through it, keeping it flat and straight while you sew.

You can also use a variety of needles, yarn, and thread when hand sewing, such as specific needles for stitches such as utility stitching, decorative stitching, and extra-stitches, for example bands.



THREAD A NEEDLE

Simple thread end

One end of the thread is pushed through the eye of the sewing needle. The needle eye should correspond to the thread's thickness. If you find that the thread is too fibrous, then you may find it easier to moisten the end of the thread.

With Needle Threader

The wire loop of the threader is pushed through the needle eye, and a thread is passed through this loop. Then, the threader is pulled back through the eye of the needle, drawing the thread through with it.



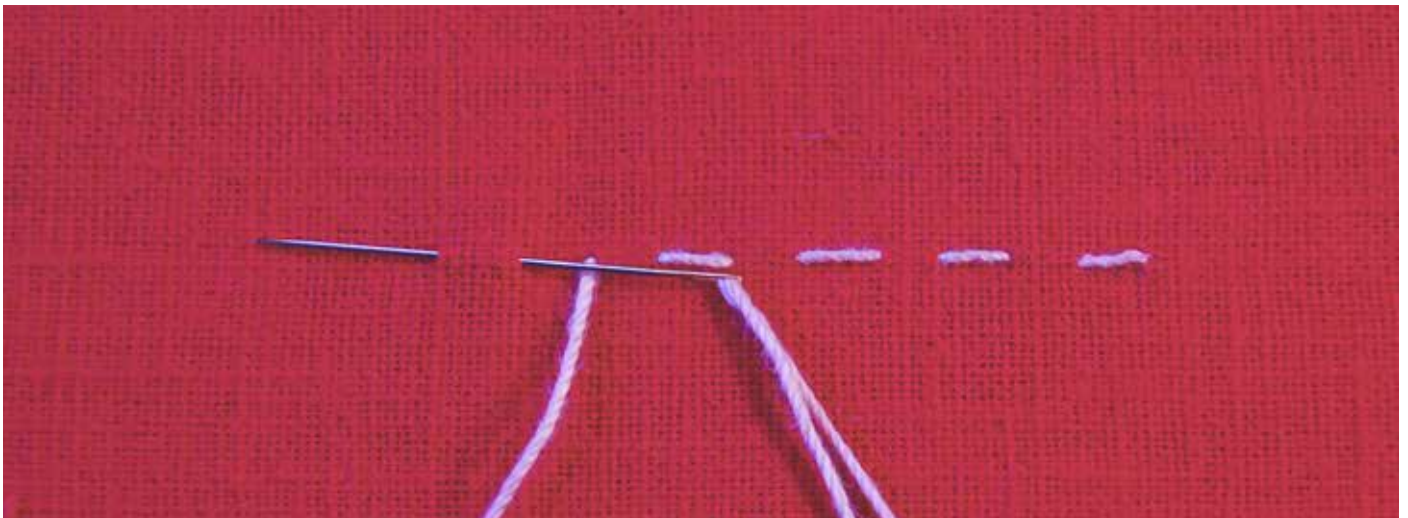
Safe your Seam

Particularly with seams that need to be durable, it is important to knot your thread at the beginning of your stitching. The above pictured technique is the simplest to perform.

Sew the thread with a small stitch on the back of the fabric and let a thread end over. The thread

end can already have a knot.

Then sew a backstitch and leave a small loop. Pass the needle through this loop and tighten. Now the needle can be guided to the front side of the knot.

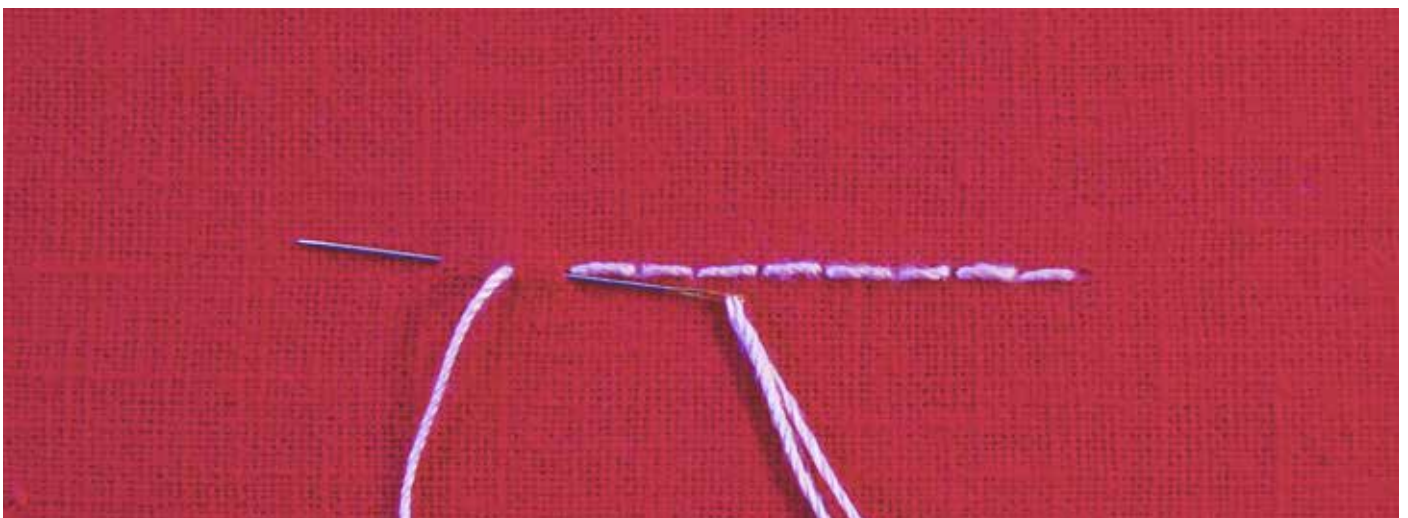


RUNNING STITCH

This is used as a decorative stitch to highlight contours, as well as being used for edges, borders and is highly suitable for curling.

Similar to the weaving technique, the needle is inserted at regular intervals and can be shortened or lengthened as required, though the shorter

the stitch is the more stable the seam will be. The needle is pushed through from the reverse side, moved along a little, then pushed back through. Then, move along a bit further and push the needle through from the reverse side once more. This is repeated until your seam is complete.



BACKSTITCH

Using a backstitch ensures a stable hand-sewn seam. It is very useful for repairs, contour work, and decorative stitches. On the reverse side of the material the stitches are twice as long as on the front.

Push the needle through the fabric from the re-

verse side. Then, insert it a small amount behind this point. Following this, push the needle back through from the reverse on the other side of your initial point before pushing it through once more near your initial point. This is repeated until your seam is complete.



CROSS STITCH

The well-known and simple cross stitch is very versatile. It can be used to pull together seams, or to provide a decorative filling to the fabric's surface.

As a general rule, a lower stitch (Under-stitch) is made from the lower right side to the upper left, then the thread is passed under the reverse side

before the needle is pushed through from the lower left to the top right corners to complete the cross (Deck-stitch).

If there are several cross stitches in a row, it is more appropriate to first sew all the under-stitches and then go back to fill in with the deck-stitches.



WHIPSTITCH

Using this almost invisible stitch, you can sew together two folded edges or appliqués.

Start by pushing the needle out through one of the folded edges, then go directly across and into

the other folded edge. Feed the needle diagonally to the next stitching point to come out of the first edge once more. This is repeated until your seam is complete.

BY MASCHINE

With modern sewing machines, a variety of utility and decorative stitches are possible much faster and more easily.



CONTROL PANEL

Sewing machines usually have different control panels and presser foot areas around the feed table. So where one version may have wheels to turn to select the stitching style, another may have buttons to select the same thing.



LOWER THREAD

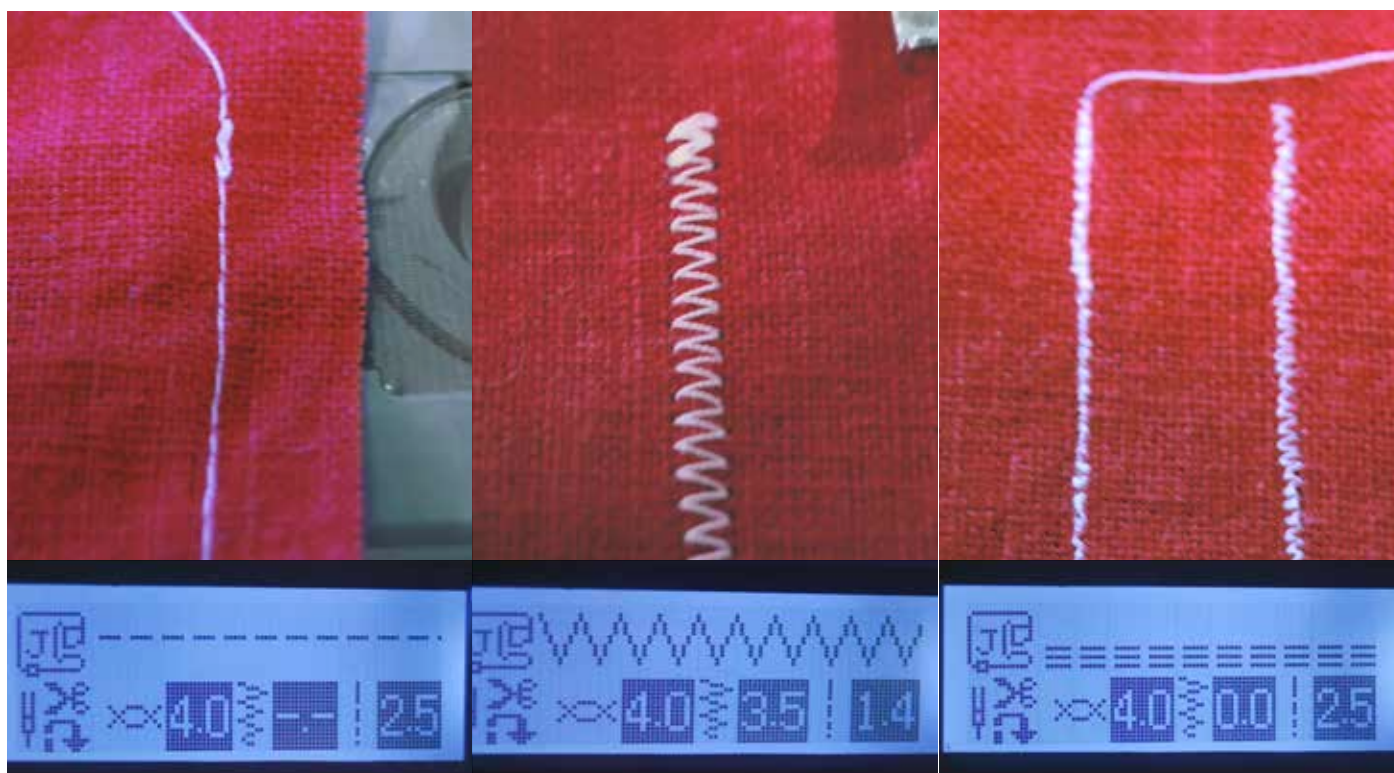
The presser foot area tends to only have two possibilities. One where you access from the front to reach the lower thread where the accessory compartment is removed to gain access.

The other allows you to access the lower thread from the top, through a pop-out, usually transparent, panel.

Or access from the top. The cover is mostly transparent and has the advantage of keeping the lower thread always in view.

Tip:

It is important to regularly clean your machine in order to guarantee a long, successful sewing life, as some fabrics can jam the mechanism.



STRAIGHT STITCH

The straight stitch is a line of equally spaced straight line stitches and is the standard setting for sewing machines. This is suitable for all basic sewing work.

ZIGZAG STITCH

A zigzag stitch can be varied according to the length and width of each zigzag, and can be applied to all types of fabrics. With the zigzag foot it can be sewn forwards and backwards

STRETCH STITCH

This stitch is usually a triple stitch, easily stretchable and extremely durable.

A second variant can be found in the beveled zigzag stitch.

Tip:

The saddle stitch is ideal for temporarily sewing fabric layers together. It is a very long, straight stitch and prevents the fabric from slipping when sewing. It can be used for attachments, when using many layers of fabric, or sewing together pieces of fabric.



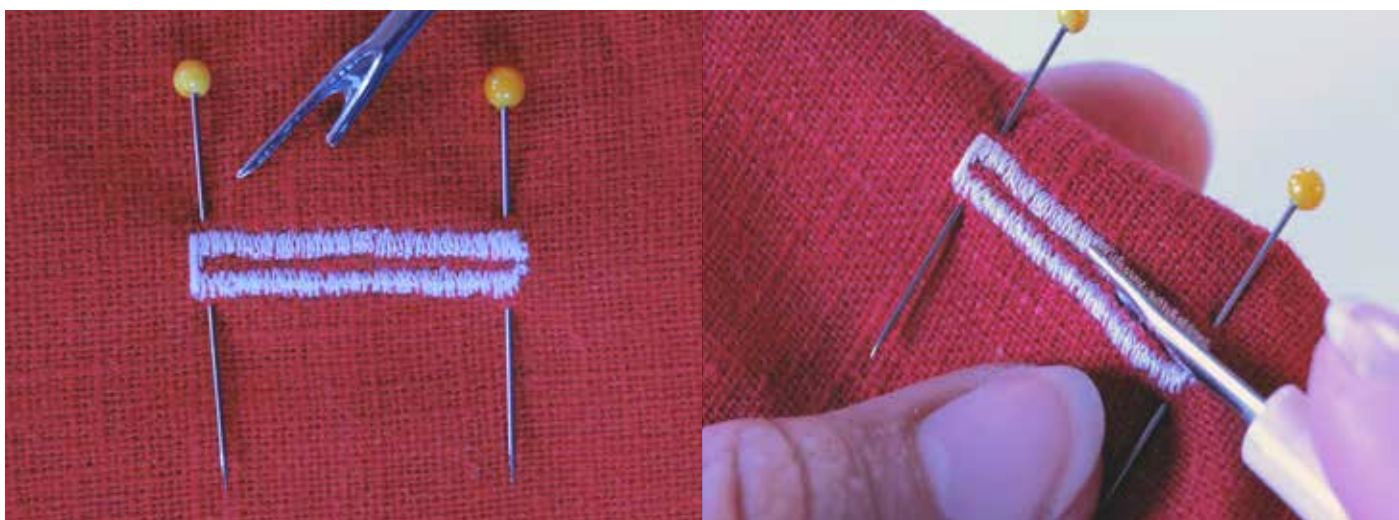
BUTTONHOLE

Machine-stitched buttonholes usually require a presser foot of the same name.

The stitch consists of two long strings, known as caterpillars, which are tightly packed zigzag stitches, and two connecting bars that consist of a

twider zigzag stitch. The latches delimit and fasten the buttonhole itself.

After you have finished sewing the complete loop, the buttonholes are cut with a seam cutter.



Tip:

To prevent the fabric from being accidentally damaged when you untear the buttonhole, insert a pin across each bar to stop the seam cutter.

PATTERN



Simplicity



Copyright © 2002
 Simplicity is a registered trademark of
 Simplicity Pattern Company, Inc.
 1200 N. Lincoln Ave., Independence, MO 64050

www.simplicity.com



ORIGINAL
 1957 DESIGN
 DESSIN ORIGINAL
 DE 1957

This pattern is multi-sized, containing all the sizes as follows:

	XS	A	B	C	S	D	M	F	L	XL	2XL
Bust	20"	22"	24"	26"	28"	30"	32"	34"	36"	38"	40"
Hip	30"	32"	34"	36"	38"	40"	42"	44"	46"	48"	50"

Copyright © 2002-2011 by Trudy Victorian



TAKING MEASUREMENTS

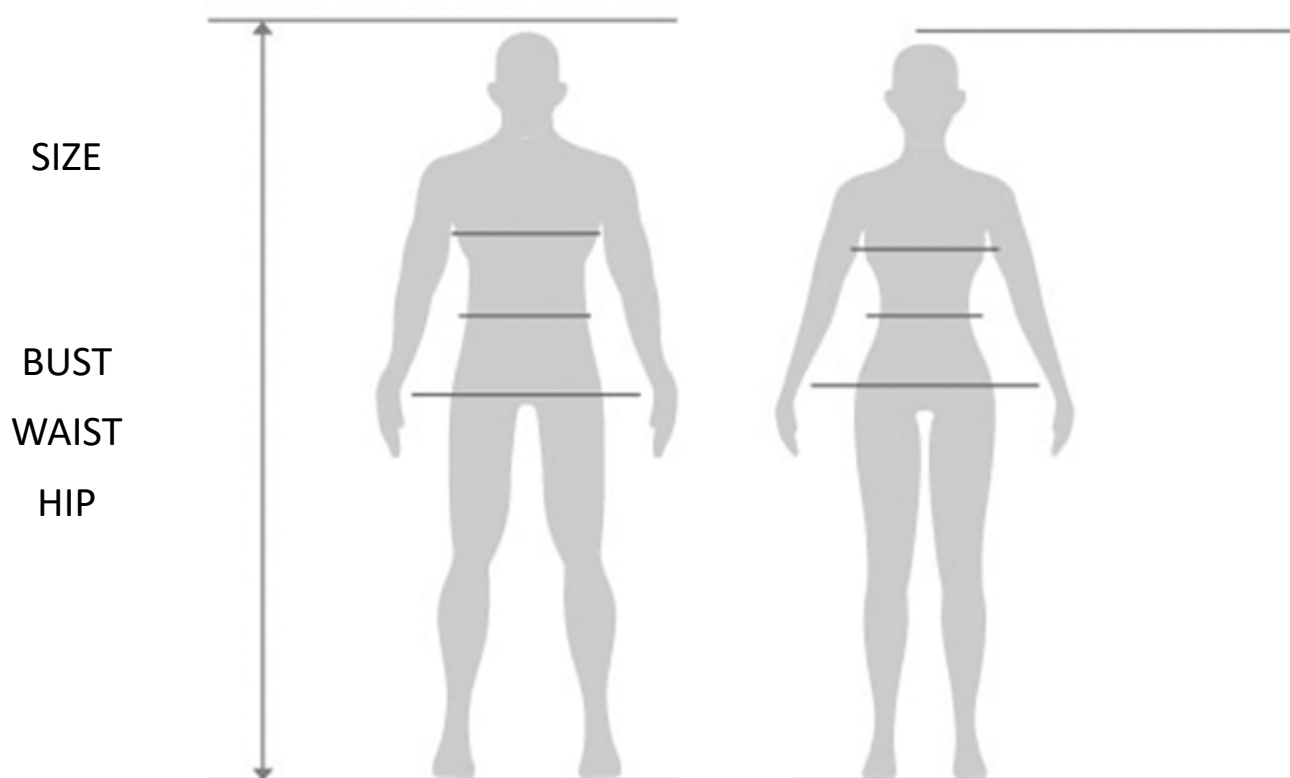
The basis for every self-sewn costume is the basic paper pattern. It is very important to know your own measurements and size, and if the right pattern is found, the guidelines provide valuable information.

With the help of a tape measure, a pen, and some paper, you are ready to start taking your measu-

rements.

When you measure yourself, make sure to wear tight-fitting clothing or underwear to not distort the result.

To get perfect results, you may need a friend to help you.



IMPORTANT BODY MEASUREMENTS ARE:

Size

Measured from the top of the head to the sole of the foot whilst not wearing shoes.

Waist circumference

Measured around the narrowest part of the center of your body.

Bust circumference

Measured around the highest point of the chest. At the back, you should ensure that the measuring tape is straight.

Hip circumference

Measured around the widest part of the hip.

There are also shoulder width, arm length, back length (shoulder to waist), front length and leg length.

In order to calculate the correct dress size of a pattern, you only need the above four measurements.



Tip:

Many patterns have different sizing tables. Take the largest measurement of your body and later pin and adjust the pattern tighter to fit perfectly.

PAPER PATTERN

Finished paper patterns that you find in sample books, in individual packaged parcels, or on the internet are very convenient and safe to use. With these patterns, all necessary pieces are arranged side by side on a sheet of paper.

Another advantage of paper patterns is that it is very simple to modify the pattern (especially important for cosplayers). There are also instructions and important notes on the pattern itself, as well as a sizing chart with the required amount of fabric noted.

If you are looking for a trousers pattern and find one that is close but the legs look a bit different, you can just change the pattern around the legs until the perfect trousers are ready. Or you can combine the two sections of a shirt, the sleeve and collar of shirt A in the pattern added to the basic section of shirt B.

There are several manufacturers of patterns around the world. The five best known brands are listed below.



BURDA

With an assortment of over 600 paper patterns, Burda are probably the best known German pattern brand.

The patterns are all pre-packaged, printed on large sheets of paper in collections of books, or found online for printing.

Some patterns are quite large and require a seam allowance of 1cm to 1.5cm

BUTTERICK

Ebenezer Butterick invented the first paper pattern sheet in 1863 and thereby revolutionized the world of sewing. Today, Butterick is a globally expanding company. In addition, Butterick is perfectly equipped for vintage fashion, historical cuts and elegant costumes.

Similar to Simplicity, the seam allowance additions are automatically included.

SCHNITTCHEN

Schnittchen is one of the still largely unknown German manufacturers, though it has a very big advantage with a large assortment of fashionable and simple cuts for women and children.

Ideal for collecting basic paper patterns and beginners. It is available in German and English.

SIMPLICITY

The most well-known paper pattern brand in the world.

Simplicity patterns come from the USA, and also have special costume patterns from games, TV shows, Disney, and movies. They also have a large amount of historical-based costumes.

Seam allowances are automatically calculated on the patterns.

KWIKSEW

KwikSew was founded by Kerstin Martensson, originally from Sweden.

"Kwik" is a mix of Swedish and English and means 'fast'.

Today the KwikSew pattern are produced in America and already has over 500 cuts.

A small introduction

Fortunately, paper patterns are not witchcraft, and are therefore very easy to understand.

There are 3 things in the package:

The Case

Including the pattern, item number and factory name.

Many have a list of materials (fabric, ribbons, closures) on the back, a size table, and the overall fabric consumption.

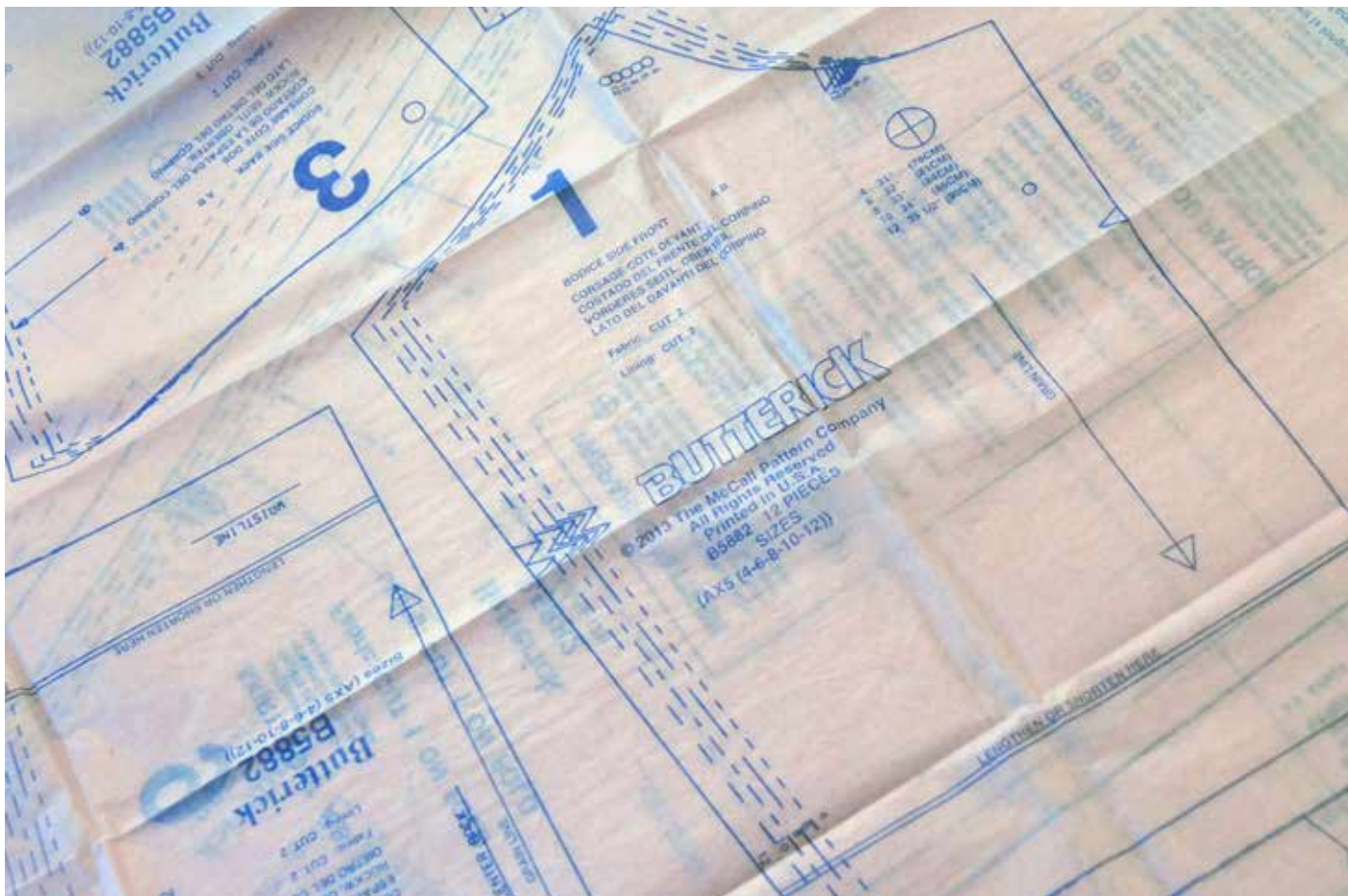
The Pattern

The pattern is printed on 2 or more thin sheets of paper for one-time cutting.

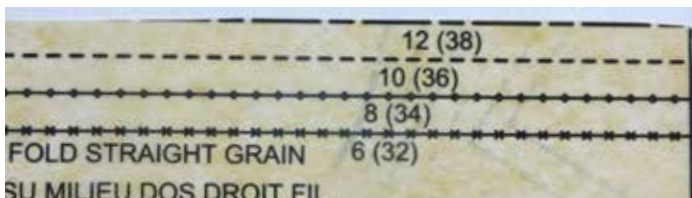
The Instructions

They show the pattern as a smaller drawing, as well as all pattern pieces by name, and a step-by-step tutorial with text and technical drawings.





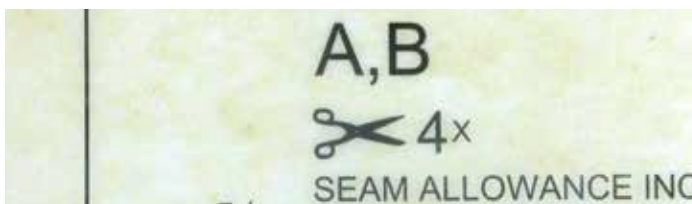
THE PATTERN IN DETAIL



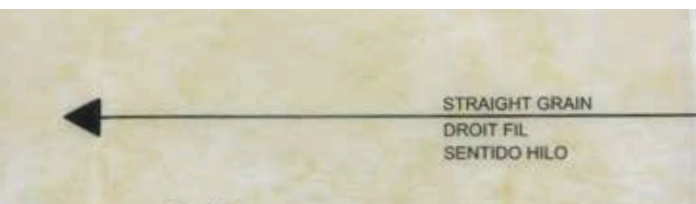
Different Size Marks



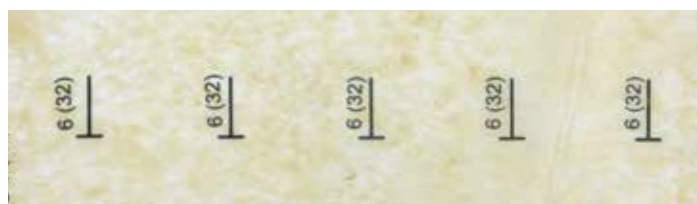
Numbering and Naming



Number of Parts required + Pattern Variants



Run of Thread



Buttonholes and other Fastenings

TAPE YOURSELF

Despite the thousands of pattern variations, sooner or later you will come upon the moment where no pattern will help.

Be it clothing, a bag, armor, or weapons, a pattern is always necessary to make a neat costu-

me. An easy method to make a pattern yourself is with a foil and tape method. This method will work on a dress form as well as on yourself, and you can use many tapes, such as paper tape up to Duck-tape, and anything from a pen to a permanent marker.



1. To protect your body or the dress former, wrap it with clear film.

2. To have a good base shape for your pattern begin to cover the clear film in tape. It is advisable to use many small pieces to make the whole body easily.

NOTE: When patterning the whole body, tape the arms and legs last.

3. Draw the center lines at the front, back and sides of the body, then draw your pattern using these guidelines.

If you have two similar patterns, then you can make them at the same time.



4. Cut out all the pieces you have drawn. Whilst doing this, label your pieces to keep track of them later.



5. Your self-designed pattern is finished.

PIN YOURSELF

Another technique for creating your own patterns is modifying existing clothing or fabric offcuts. You will need any old piece of clothing or large offcuts of fabric, many pins, and a pen.

Again, with the assistance of a friend it works much better.

The following steps are possible for clothes too.



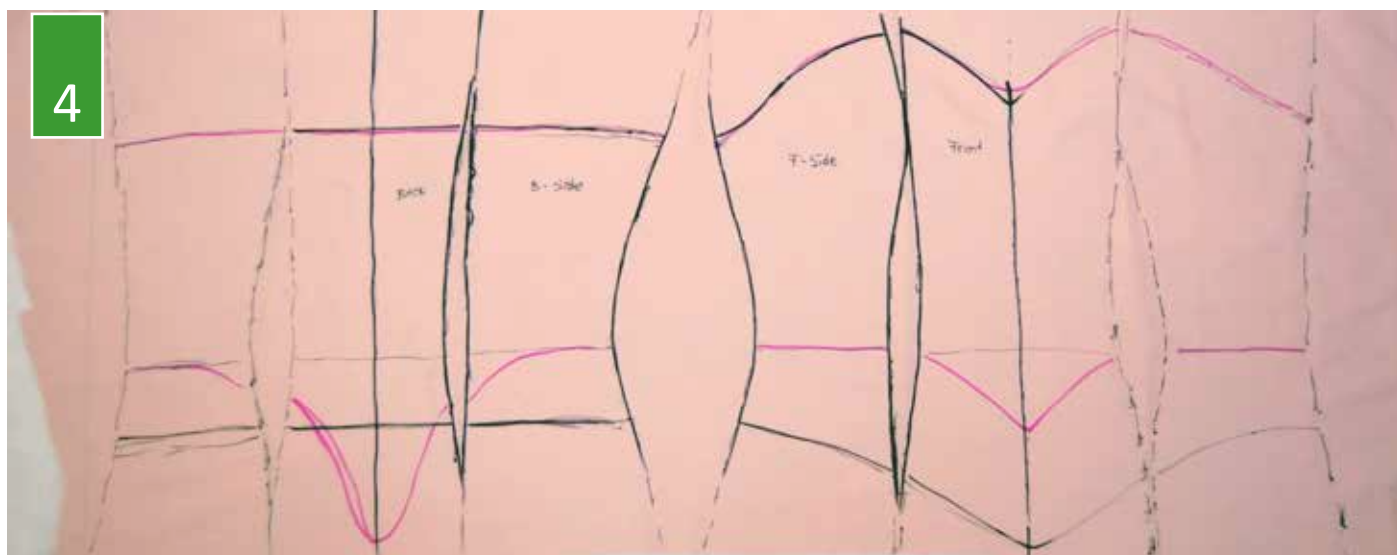
1. Begin by attaching the fabric to the dress form or your body, first in the wider places, then follow the form shapes you want.

Pin the fabric firmly in the middle so that it doesn't slip any more.

2. Now you can draw and create your pattern piece by piece at the waist, working up to the top.

If you want to pin parts of the pattern yourself, or have a hard-working helped, don't let them poke you!

3. The pattern is now drawn, as with the tape pattern. The only difference is that both sides of your fabric should be marked.



4

Free yourself from your cage of pins and admire your work!

The advantage of making a fabric pattern is that the fabric can be ironed and, if required, you can also use an ironing fleece to steady it.

Tip:

You can keep all the purchased and homemade patterns in a folder with pictures of the finished costumes.

PREPARATION

The pattern has been bought or finished, and the fabric is waiting to be used.

To help you begin your project, here are a few things to help with preparations.

WASHING

Many fabrics can still have color residue in the fibers, which can stain when washed or worn.

This is especially common when colored fabrics are sewn on bright fabric. Your hard work should not be ruined after the first wash!

IRONING

After washing, or after unfolding newly purchased fabric, you will find a lot of folds and wrinkles in it. This not only makes the clean transfer of the pattern harder, but can also make ironing the costume after it's finished more difficult as well.

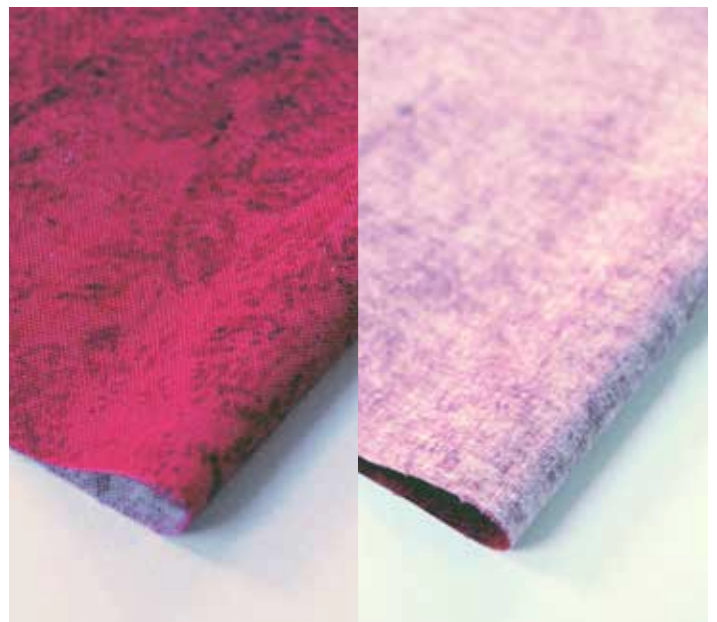
In addition, a smooth, ironed fabric looks much nicer in your progress pictures and in the finished costume.



FRONT AND BACK SIDE

Each fabric has two sides. The front (right side) and the back (left side).

The back side of fabric is often rough, coarse, or matte when compared to the front. For printed fabrics you can see it on the brighter, non-printed side. You should use this side to transfer all markings onto the fabric.



STRAIGHTEN FABRIC

Not necessary, but very helpful.

Some patterns need straight edges, like coats, long skirts, frills, or caps. The below methods will help you.



Cut

Some fabric has a selvedge that has holes or is warped.

Use a ruler to cut the selvedge.

Rip

Some fabrics, especially cotton or taffeta, are easy to tear.

Cut the fabric and divide the fabric with a strong pull.

Pull

For cotton, chiffon, and other fabrics, the threads can be pulled. The fabric and the weaving won't break, but it helps to neaten it.

The fabric and the weaving don't break, but it takes.

TAILORING



This is where the 'grain' of the fabric is used. Lay the pattern pieces on your prepared fabric with the arrow pointing with the grain.
Each fabric has its own properties, such as how stretchy it is. The fabric grain decides whether your fabric stretches one way or the other.

This means that trousers may not be able to stretch longer, but is stretchable in width. For the right effect, you must pay attention to how your pattern is applied.



If you have a pattern without seam allowance, you can add the edges of the paper and add 1cm to 1.5cm near the edge or record directly with the seam allowance.
Do not forget to add all the important markings like buttonholes.

Some pattern pieces are very light and some fabric can be slippery, and so should be pinned before cutting.

Now you can cut it out.

Tip:

With chalk, you can mark hints in small corners, such as F for 'front' or R for 'right'.

PIN IT

To simplify sewing at the beginning, our little friends can help. Pins are available in many different styles, but all have the same function - keep the fabric together.

horizontal

Horizontal to the seam is the practical way to sew. You can sew over the pins in a sewing machine and can leave removing all the pins until the end.

Unfortunately, you can hit the pin with the sewing needle, which would cause the needle to blunt or break.

vertical

You can quickly pin a long line by placing the pins vertically, going with the seam. The pin tips should point away from you when you sew.

If you use this method, the pins must be removed whilst you sew, which can slow down the process.



Tip:

A small bowl or can next to the sewing machine helps you to collect the needles. As a result, they do not lie around or fall to the ground.

EXTRA

Tailoring with pattern in fabrics

The tailoring of plain fabrics (also called 'Uni') is easy, and you only have to pay attention to the fabric grain.

Patterned fabrics require much more concentration, time, and money.

The rule of thumb here is: more material is always better and often necessary.

To have a pattern run uniformly across the costume, you should look for certain corner points for the paper patterns to match up to.

For a checked pattern, it should be the same line order. You should also consider the mirrored side of your paper pattern.



The basic form should be used for motifs such as flowers, ornaments and figures. Reflection is less noticeable.

A nice transition of a line or a bow is also an advantage.eil.





HOW TO MAKE: GIRL



SKIRT

Now your project can begin.

At the start, you may find that sewing costumes can be complicated or incredibly difficult. However, with this picture guide, you will be able to

follow step-by-step how to create the costume. The first piece is a plate skirt, since the cut is easy to make for yourself.

You will need:

Your fabric of choice

Zipper and a button

Thread that matches your fabric

If necessary, strap fleece for the waistband.

The cut you need for the skirt is a simple circle. Though if the skirt is longer than about 70cm you may need to cut two semicircles.



Iron your fabric and fold it in half or into quarters together with the center of the skirt in a corner. This technique helps to cut long skirts.



Tip:

There are special rulers with notches. This allows you to mark exactly the near point

Dieses Skript berechnet aus einer Angabe eines Kreises alle weiteren.

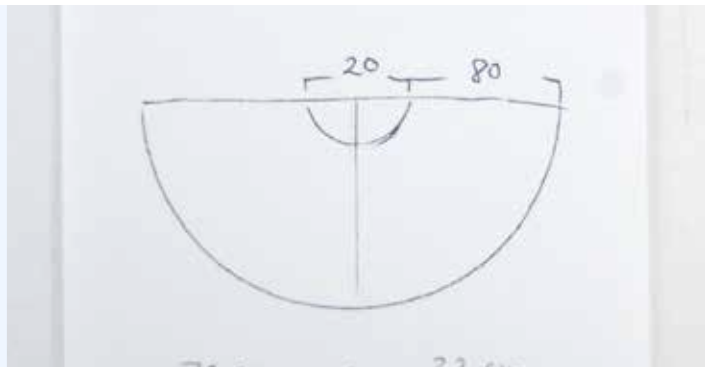
Ein Feld ist auszufüllen. Rest wird berechnet

Radius:

Durchmesser:

Umfang:

Flächeninhalt:



With a circle calculator, you can calculate all necessary measurements - you would need your waist circumference from earlier, and the desired length of the skirt.

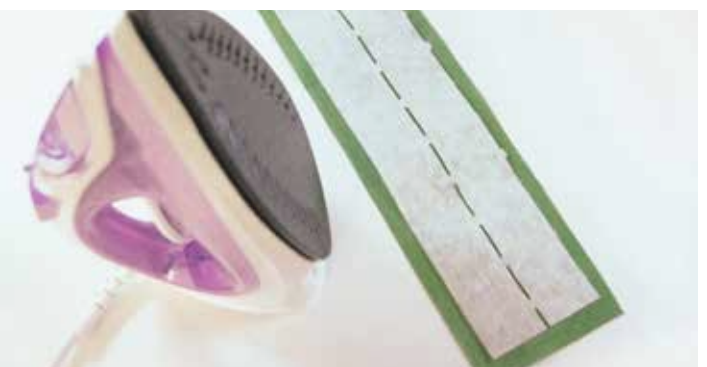
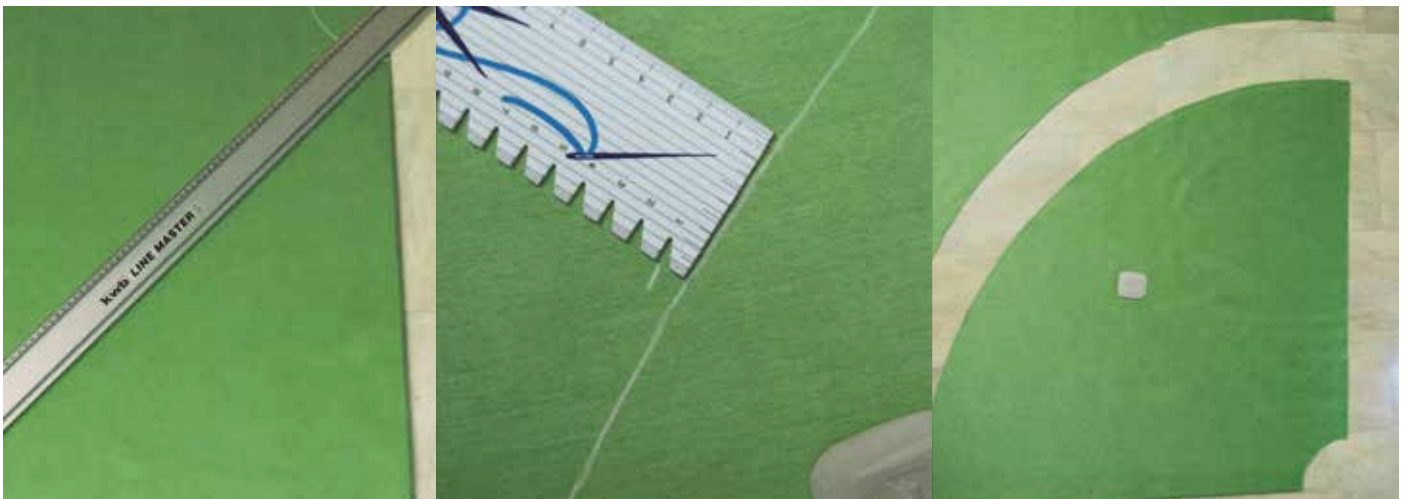
With the waist circumference, you can calculate the diameter for the small circle, which you can see illustrated above, such as 22cm.

This circle is the first thing you mark at the corner

of the skirt for the skirt's center. Put a ruler on this circle and draw out your skirt length. This will form your skirt's hem - here it is 80cm long.

Don't forget to add your seam allowance of 1cm to 2.5cm, if necessary. This would make your small circle 20cm in diameter, and the large circle 81cm, with a 1cm seam allowance.

Then just cut your pattern out and it is done!



Next we go to the second section: the waistband.

The waistband is a long rectangle or ribbon that fits around your waist. If you have a button as a closure, the ribbon should be longer than the waist.

The ironing fleece, or interface material, strengthens and stiffens the fabric so it can withstand dragging and pulling movements better.



First, draw your waistband onto your fabric and cut it out. After this, iron the interface with the rough side against the fabric. One of the short sides is folded in the middle

and sewn with a straight stitch. Now just turn it down and iron it briefly. This simplifies the sewing to the skirt later



Take your skirt and place the two half circles on top of each other, with the right side of the skirt in the middle. This means that no matter which way you turn the fabric, you will always see the left side. If you have two half circles of fabric, you should stitch the sides together to make a complete circle.

Please note that you can skip this step if you cut a full circle of fabric. For a neater result, you can cut off the thread ends and sew a zigzag stitch along the edge. This will prevent the material fraying when worn or washed.



For the closure you need an extra seam. Draw a line in the middle of your half-circle, then fold the fabric and place the zipper next to it to mark the end of the zipper on the fabric. Sew the fabric together 1cm above the skirt hem.

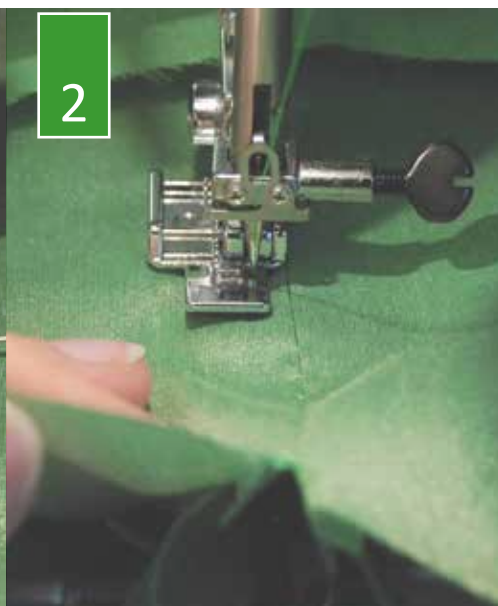
The zipper can also be shortened by sewing with a straight stitch several times over the row of teeth. With a big stitch you close the opening of the zipper. And so we go over to the elaborate part.



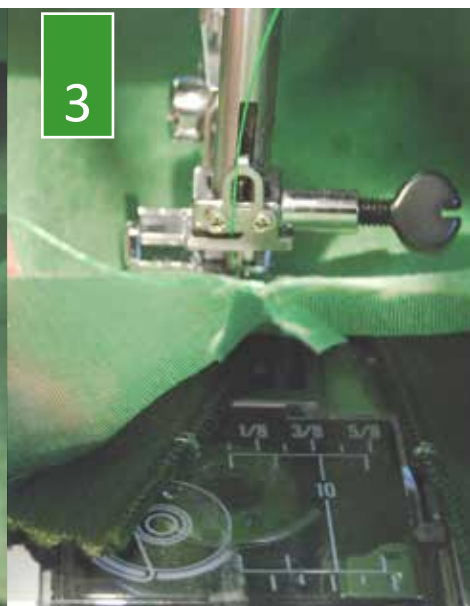
With sellotape you can fix the zipper directly on the seam allowance.



1



2



3

1. Mark the end of the zip with a pin and put on your zipper foot.

2. Move the seam up the the puller. The presser foot can be felt on the row of zipper teeth.

3. Slightly in front of the puller, lower your needle so the fabric doesn't slip when lifting the presser foot. Now lift your foot and unzip the zipper before moving the pulled behind the foot.



4



5



6

4. Now you can lower the foot and sew to the end.

5. Place your presser foot on the other side of the holder and start as before at the end of the zip. Close a little bit over the row of teeth. So at the end it is well fixed.

6. The same procedure follows and a nice seam is sewn next to the row of teeth until just before the puller.

7. With a seam splitter or a fine scissors you cut the coarse seam from the fabric. This allows you to open the RV and push the stopper behind the presser foot.

Hold the loose piece of the zip tight and close to the end.

Congratulations!
Your first big challenge is mastered.



In order to complete the closure go back to the waistband.

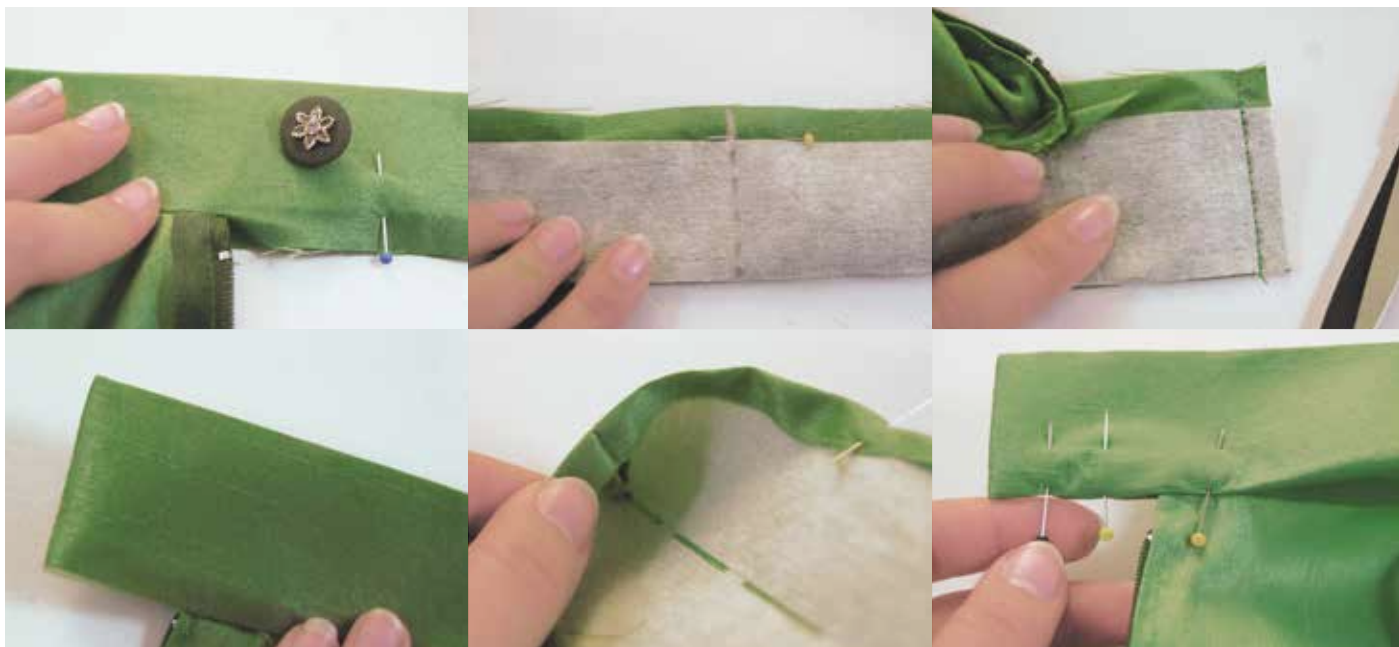
First, the waistband is sewn on the left side of the skirt.

The already closed side of the waistband is attached directly to the end piece by the zipper.

Step by step, the band is fastened with pins along the small cut-out circle and may be placed under the needle.

Continue to pin the waistband until you reach the other side of the circle, ending up at the zipper.





Take your button of choice and put it on the still open end piece from the waistband. Mark the necessary distance with a pin and turn the fabric on the left.

So you can also close the second page with a straight stitch and turn to the right again. Turn your seam allowance over and pin the waist tightly to the skirt.



In order to close the waistband, you only have to sew along the fold with a narrow distance to the fold.

Finally, take your buttonhole foot and sew a nice buttonhole at the off-standing end piece.



On to the last hurdle or the general ending of the skirt. Using a zigzag stitch, trim the entire hem. This will

prevent the fabric from fraying, and after rolling the hem and stitching it down, as pictured above, you will get a very neat hemming line.

You can also add ribbons and straps to the skirt for a nice finish.

Many princess skirts and other unusual designs from various shows are richly decorated along the hem.

Find your decoration and place it at the edge. The ribbon can be sewn on the right side and folded back later.

In order for the transition to be smooth, you can fold and sew the beginning and end of the ribbon.

Once the ribbon is pinned to the seam allowance, fold it over and sew everything.

You made it!
Your first skirt is ready.

According to the motto:
It fits like a glove.





CORSAGE

Every skirt needs a matching upper part, and many costumes use a corsage. Even better, there is a simple way to sew a matching corsage!

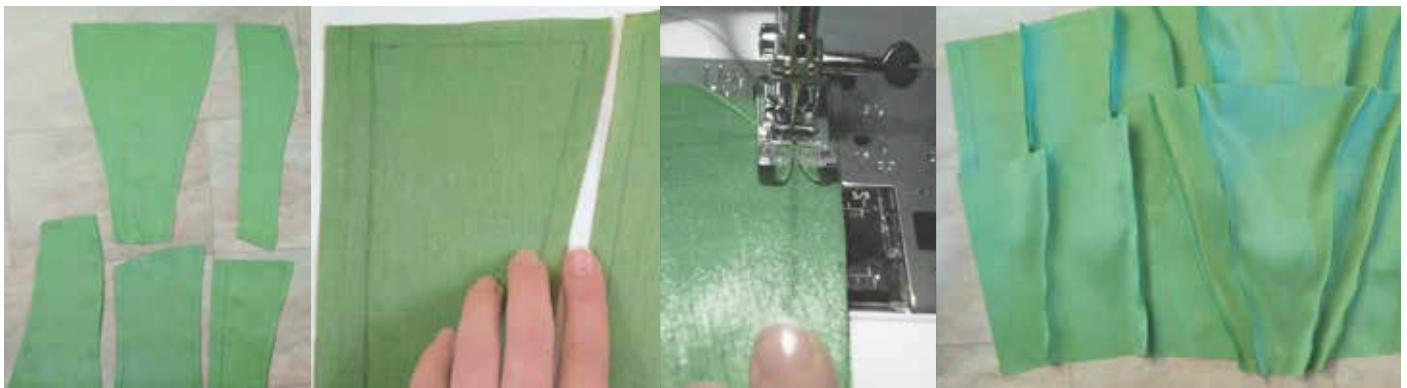
Your materials are:

Fabric of choice, a long cord (usually approx. 3m), a corsage pattern, ironing fleece and bones (hard plastic or metal).

What is the difference between corsage and corset?

A corsage is soft and forms with the body, rather than altering its shape. It is more comfortable to wear.

The corset is hard and laves. It forms the body, and can make several inches of waist circumference magically disappear though it needs a lot of practice to wear.



Many corsages consist of front, front side, back side, and back panels. Depending on the pattern one or two parts may vary. A corsage should consist of the outer fabric and an inner lining. Mark your fabric pieces to connect them properly.

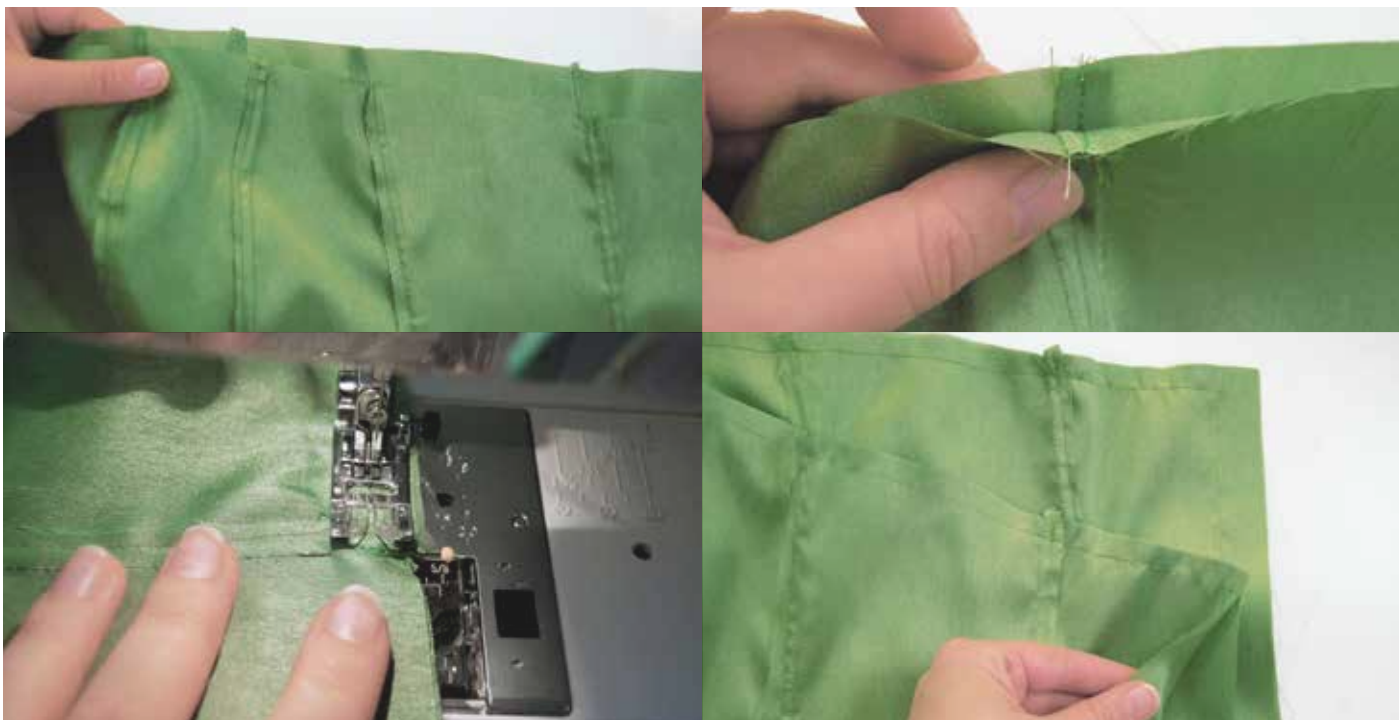
Afterwards, ensure everything fits together on the sides, paying attention to each curve and marking.

A corsage can and should consist of the outer fabric and an inner lining.



This step is not necessary, but it makes your seam more tear-resistant. Depending on the fabric it protects the seam and the fabric. With the help of an iron, you can press around all the seam allowances access to the left and

simplify sewing. Turn the fabric to the right and sew the seam allowance with a narrow distance to the seam. So it does not stand on the left side any more.



Place the outer side and inner lining together. The right sides lie on each other, so the same as in the skirt before you see only the left side, no matter how you turn the fabric.

Make sure that the seams lay against each other, as it will look much nicer when finished.

Now sew the two corset pieces together, except for an approximately hand-wide opening on one of the sides.



Before turning the corset through the hand-sized opening to the right, cut a small triangle at all corners.

This ensures the necessary free space inside and a clean edge.



To finish the main corset, you can sew around the edge of the fabric again very close to the edge of the fabric. Whilst doing this, you can sew closed the opening at the side.

Time for detail. The next step is ideal for a clean lacing at the back and can be applied to every seam on the inner lining.



Take a bias tape (or any other 2 cm ribbons) with matching color and cut a strip along the length of the back piece.

It should be 2cm longer than the necessary length.

At each end of the bias tape, turn down 1cm of each end and insert it at a narrow distance from the edge. Close the tape tightly. But leave one of the ends open. Whether it's up or down is up to

you.

Take your bone and cut it about 5mm shorter than the sewn bias tape.

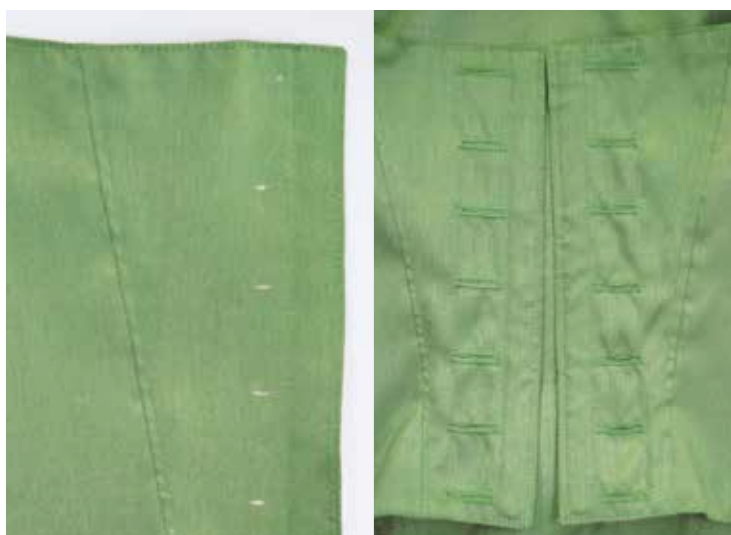
For plastic boning, scissors are sufficient to cut it. However, in the case of metal boning, you will need to use at least wire cutters to trim the length.

Slide the boning into the bias tape and close the small opening..

Time to create buttonholes.

Mark every 3-5cm on both of the sides of the corsage and sew your buttonholes on these. Be careful not to make the holes too small, because you won't be able to get the cord through the holes!

2cm is well suited for most cords and ribbons.



To have a nice finish on the back, where your blouse or skin are hidden, I recommend using a visor, which also protects the lacing and prevents the laces from rubbing against you painfully.

Cut out two rectangles. As with the bones, it is shorter than the edge. The width should be at

least 10cm, so that it still functions as a visual protection.

Strengthen the rectangles with interfacing material, and sew it next to one side's buttonholes and the boning.

And your first corsage is ready.



JACKET

The last piece of clothing for the lady. Besides skirts and corsages, jackets are also used quite frequently in costumes. Using jersey fabric, this jacket can be very comfortable to wear.

Your materials for an open jacket:
Your fabric of choice and a lot of love.
If you want to decorate the jacket, go hog wild!



This jacket consists of three simple parts:
A large back panel - this can be a single large piece of fabric, or two pieces connected with a seam along the spine.
The front panels - usually there will be one panel for each side that are the same.
Sleeves - one sleeve per side, unless your pattern requires otherwise.

The difficulty with the jacket is the fabric itself - Jersey material is quite stretchy. If you don't have much experience then sew slower than before and make sure your pins are closer together. Sometimes, it is possible to adjust the pressure of the presser foot - for Jersey, you should reduce the pressure.



The nice thing about sewing is the repeated actions.
Cut out your pieces of cloth and stitch them together. At the jacket, once the shoulder parts and then the sides are connected. The sleeves are

closed like a tube along the long edge.

To stretch the fabric while wearing, use a stretch stitch as described on page 30.
With a zig-zag stitch you will trim everything.



1. For a nice hem at the end of the sleeves, you can use a technique similar to the skirt's waistband where you can take two wide strips of the same fabric as the jacket.

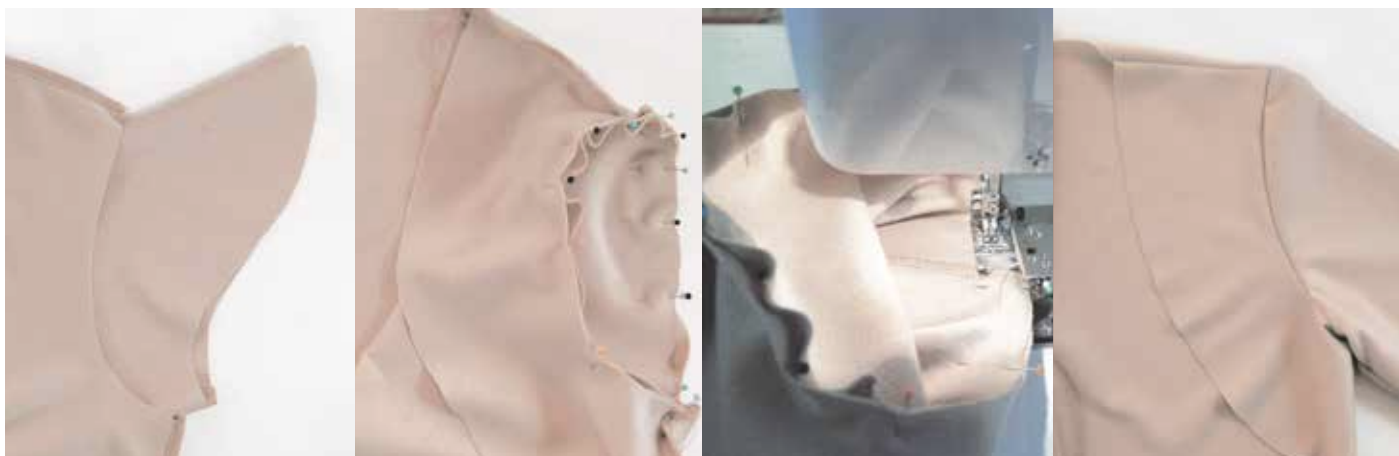
2. Fold the collar lengthwise and attach it to the sleeve seam on the inside. Once you have sewn everything, half the work is done!

3. The advantage with soft fabrics such as jersey is that you can easily trim the Seam allowance without thinking of scratching fabric or otherwise interfering.

4. Almost there. Fold the seam allowance toward the sleeve and position the stripe by stripe.

Pay attention to all indications, such as seam or stripes. This gives it a nice flowing transition from one end to the other end.

5. If the approaching seam allowance annoys you, locks it with small stitches at the waist.



The finished sleeve you turn to the right, but the main jacket part remains on the left.

Place the sleeves with the curved side through the sleeve hole with the 'pointed' side at the shoulder.

Note the markings and the front and back of the sleeve.

The steep curve is at the front and the long curve

is at the back.

It is just under the sewing machine. The easiest way is to sew the sleeve when it is in front of you like an open hose.

Important tip: Don't get poked.

Remove all the needles, trim it and turn the jacket to the right.



Your last step to complete the jacket you already know:

Trim and sew. Fold the hem twice, pin everything and sew it with a stretch stitch.

With this you have sewn your first complete costume of skirt, corsage and jacket and successfully finished.





HOW TO MAKE: BOY



PANTS

Men's clothing must not be ignored! I have selected the three most typical items of clothing.

You start with the same as with the previous chapters with the legwear.

The pants are similar to the skirt. Simple cut with a closure and a waistband.

Your materials:

Your fabric of choice, a short zipper, a button and ironing fleece.

Simple pants consist of three parts - a front part, a back part, and the waistband. There are many variations with pockets, trim, and other accessories. Even if pockets are highly useful, very few costumes have them.



Cut out the necessary pieces of fabric and iron your interface material on the waistband and on the small trimming for the closure.

Then the trouser legs are sewn together. The front has a short arch with a small tip. The back has enough space with the wide bow for the butt.

Connect the long, almost straight sides together.

Then the long sides with the tips. Leave the arches open.

Similar to the sleeve sewing in the chapter before, you turn a trouser leg to the right. The second you turn left and plug them together. At the same time the seam allowance are outside and once inside the trouser leg.

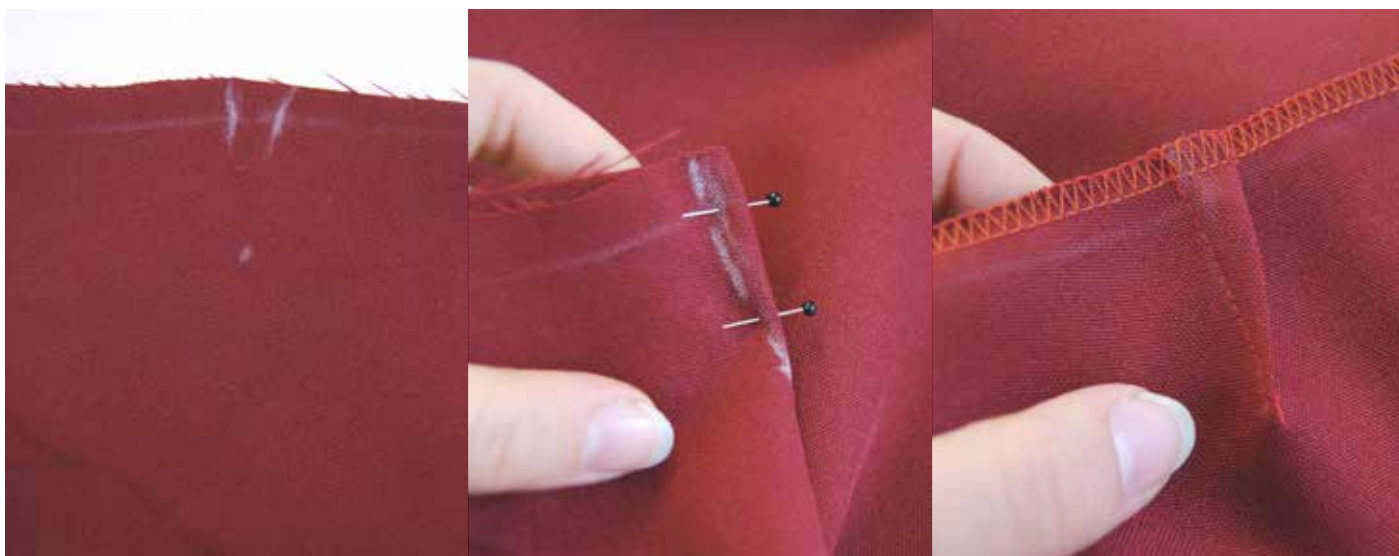
Don't forget to trim everything.



Take your zip and mark the end with a pin on the front of the bow. As with the skirt before, you can now sew the bows from the mark to the end of the back. The crotch is finished.

Here you can try the pants on for the first time. If you need to make any adjustments to the legs, you can do so at any time.

Turn the pants on the right and place the small opening for the zipper in front of you. The small trimming is sewn to the right on one of the edges and folded backwards. If desired, the folded edge can be stitched.



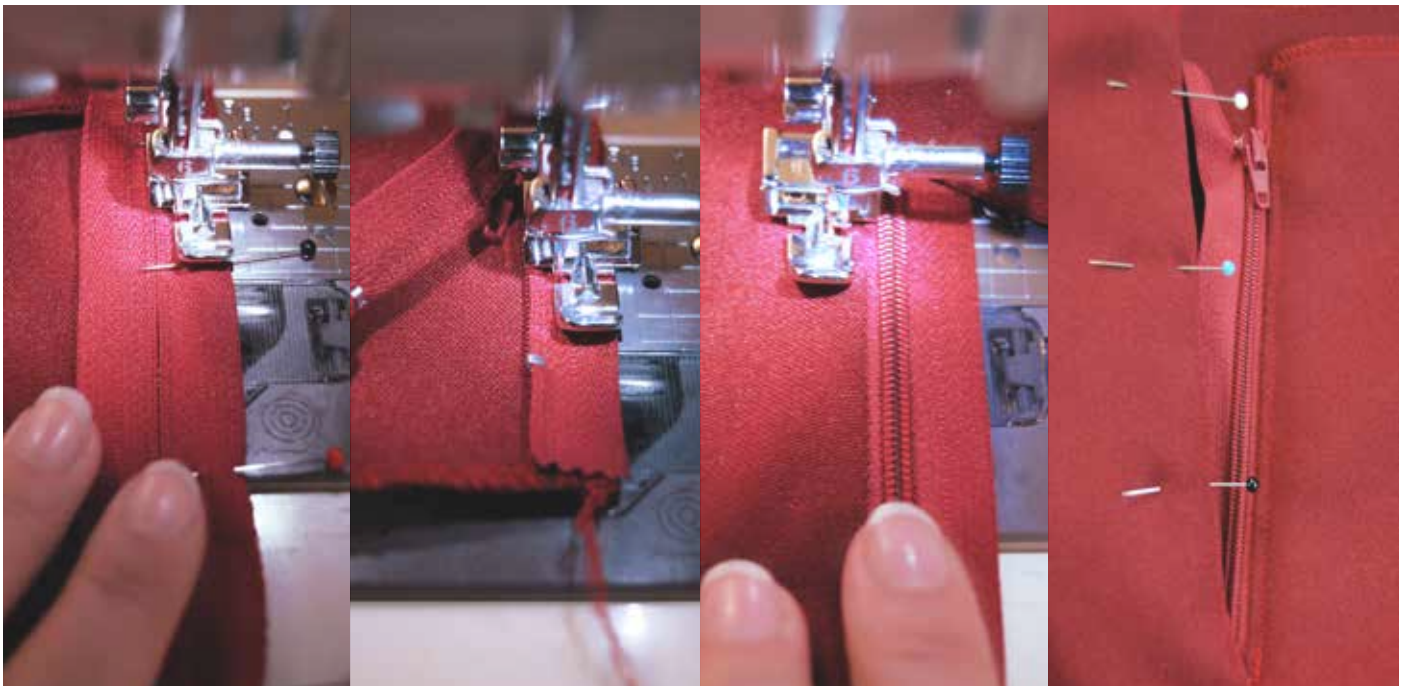
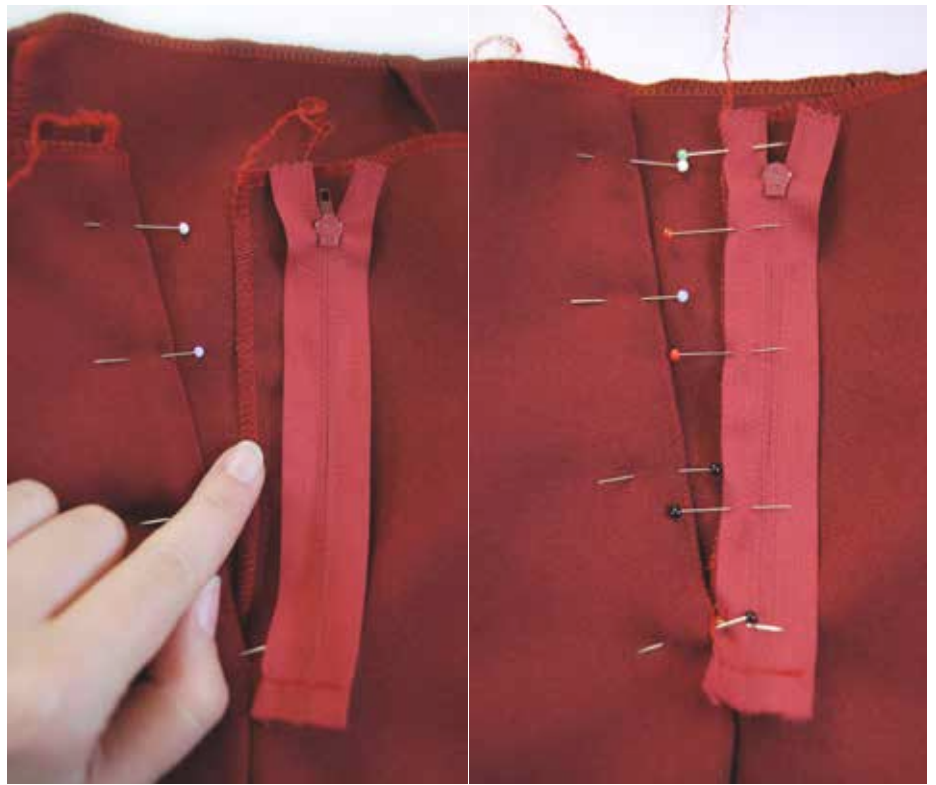
For a good fit at the waist, darts are used. Many pants have short darts at the front and long darts at the back, as there is a larger curve from the butt to the waist.

Mark all the points for the darts, fold the fabric down the middle and sew it. Repeat this for all other darts.

Back to closure:

On the front side, the zipper is placed on the un-sewn side.

In order to be able to use the lock correctly, put the zip with the back facing you on the fabric.



Now your sewing machine's zipper foot comes back into the game.

You start at the end of the zipper and sew along the row of teeth until just before the puller. Lower the needle into the fabric and lift the foot. Now you can open the zipper and push the puller

behind the foot. Then sew the seam until you get to the end of the zipper.

Fold the sewn closure and stitch the edge. This guarantees the fit of the zipper, and makes it so that the pants won't slip or scratch when you wear them.



Lay the pants straight to make the next steps easier.

1. Place the sewn patch on the zipper. It should conceal the closure completely.

2. Lock everything in place with pins and turn the pants inside out. It is also necessary to reverse

the upper trousers area.

Important: The zipper is sewn only on the trimmings. Not on the pants itself!

3. Open the puller 2-3cm so you can start the second half more easily. Then lower the needle, lift the foot and move the puller like before. Now you can close the seam.



4. Turn the pants back to the right side facing outwards and lay them flat. Then put the trimmed seam with attached zip on the trousers. The trousers should have no bump or fold.

5. Reverse the fabric one last time. With a saddle stitch, sew the visible edge along the trimming. Of course, you can also do this by hand with

rough stitches.

6. To put an end to the constant turning you have the last seam in front of you.

Right next to the saddle stitch you can sew the trimmings and the pants together. You go with the curve and end at the crotch seam.



You can practice what we already learned, as the waistband is sewn as before on pages 56 and 57.

Close one of the ends and the long side of the pants. Decide the width from the off-standing end piece to the waistband.

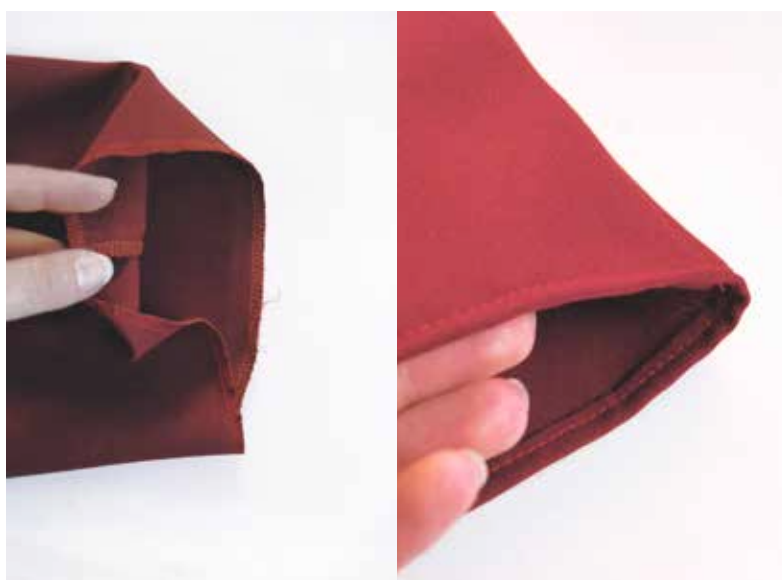
Last but not least, make a buttonhole and affix the button.

As an alternative, you can put the button on the opposite, off-standing piece as well.



To complete the pants, you just have to hem the cuffs of the legs.

Fold the hem twice, and sew it down.



Your pants are ready
and you have two great ways to sew a zipper mastered!

With a little practice, you will soon be able to do this very quickly!



SHIRT

Also well suited for the ladies' world with the numerous blouses, we will now approach a men's shirt.

Unlike ladies' blouses, men's shirts have a shoulder that is sewn in with a slight curve on the lower part of the back. This is intended for the broader upper body of a man.

With the collar, cuffs, and buttons, there are also more fabric parts, which can be provided with an ironing sleeve.

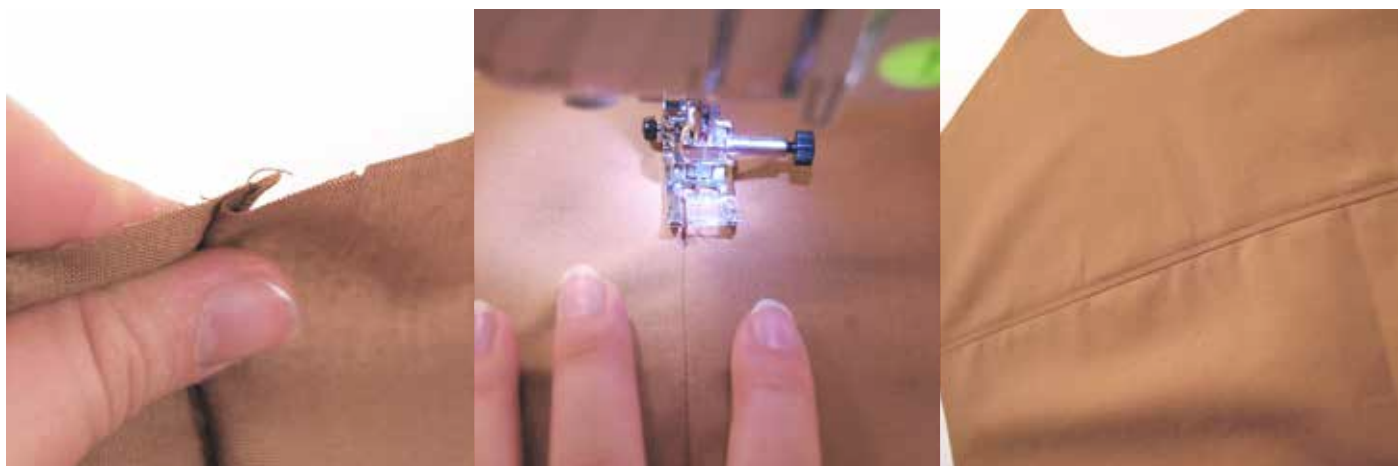
The materials:

Your fabric, straps and a handful of buttons.



The first step towards making the shirt is to sew the back pieces together. Note that the curve is sewn to have space for the shoulders and back.

If you have both parts connected, you can iron over the seam and stitch the seam allowance. This guarantees a comfortable fit.





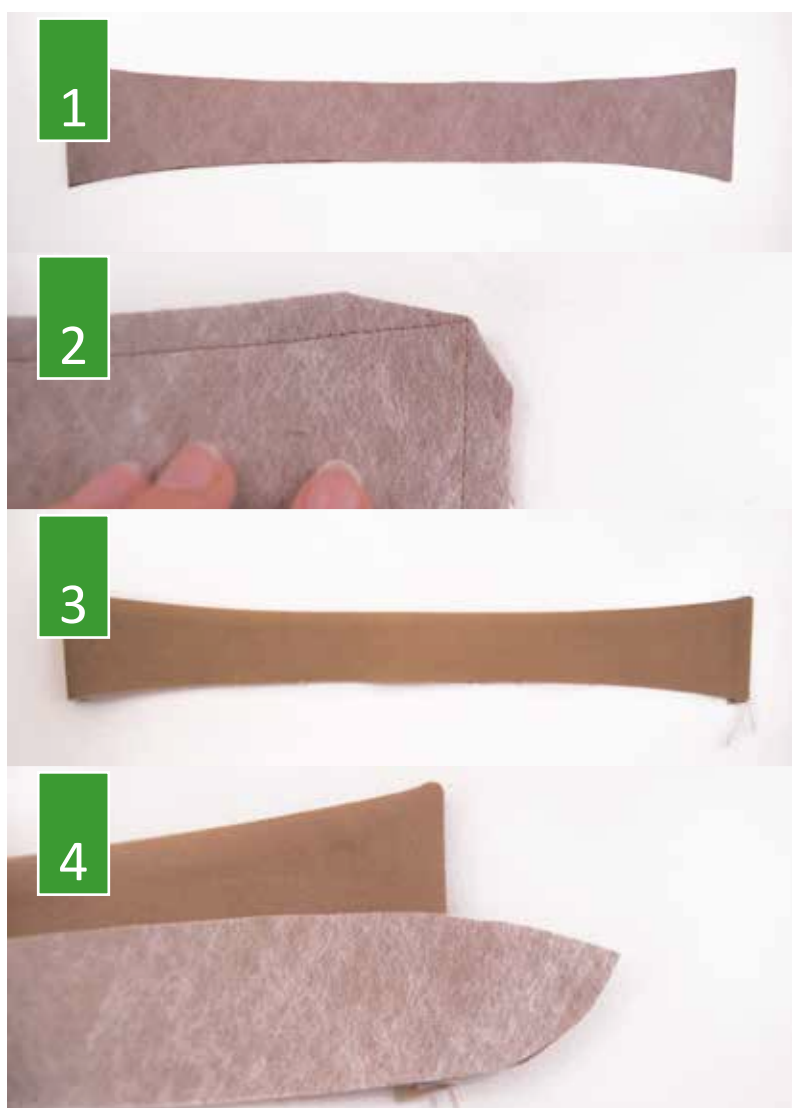
Your second step is to prepare the front.

Many patterns have an extension, which is intended to cover the buttonholes. To use these parts correctly, you iron the fabric along the lines at both front ends. It's like sewing around the hem.



With two seams, one per edge, you sew the trimming.

Both trimmings can be bent in the same direction or in opposite directions. Once you have finished, front and back can be sewn together.



The collar will be a challenge, so let's start on it right away!

1. Sew the two pieces of the collar together on three sides. Make sure that the bottom side remains open otherwise it can't be sewn to the collar stand, or turns out the wrong way.

2. The tips must be shortened. Depending on the collar tip, there should be only small triangles. The sharper the collar, the more must be cut off.

3. The collar is turned right side out and the tips are carefully adjusted with scissors or a pencil. Briefly go over the collar fabric with an iron and you are ready for the next step!

4. Place the collar stand pieces on the open collar side. As with the collar, the side and facing must be considered.

5. Flap at a corner of the collar stand and close the proximity pad as you connect the stand to the collar.
This simplifies the sewing to the shirt later.

6. With small cut triangles close together, you simplify the turning of curves.
The denser the notches, the softer the curve.

7. The collar is now ready and can be sewn to the shirt.



Tip:

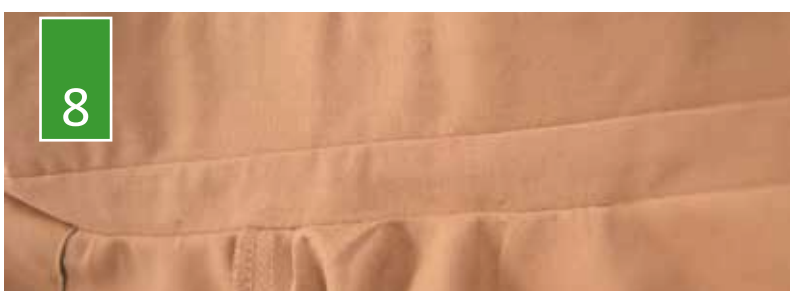
Sew with a broad stitch a line for close proximity. So you can freely sew the respective edge and sew.

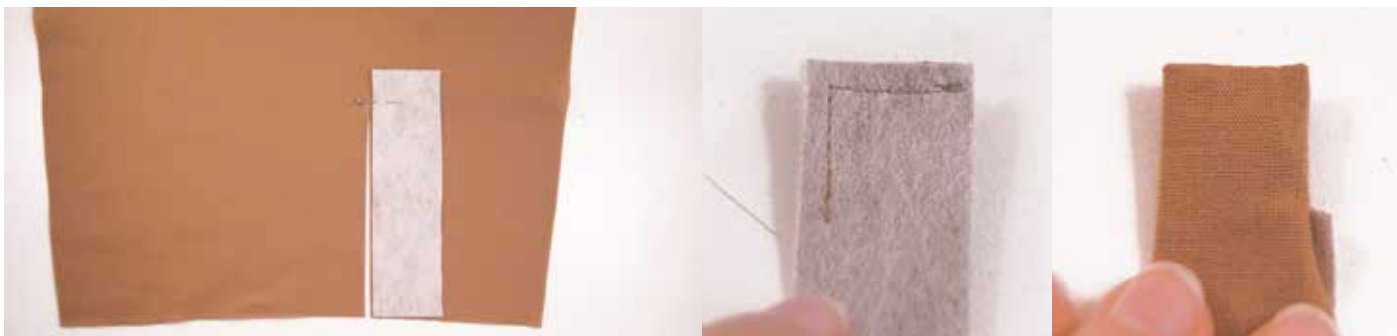
8. As with the collar, the collar stand is pinned and sewn on the wrong side of the fabric.

9. The other side of the stand can be folded and fastened much faster thanks to the broad stitch.

10. At the end, the collar is sewn with a narrow seam.

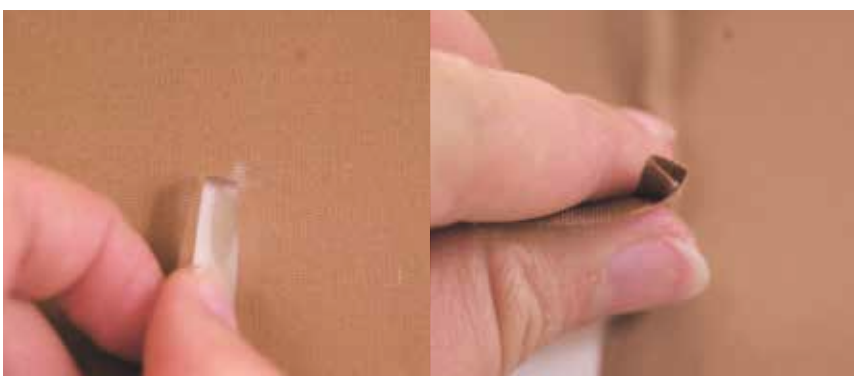
Make sure that the collar is not sewn with any creases in the rest of the shirt.



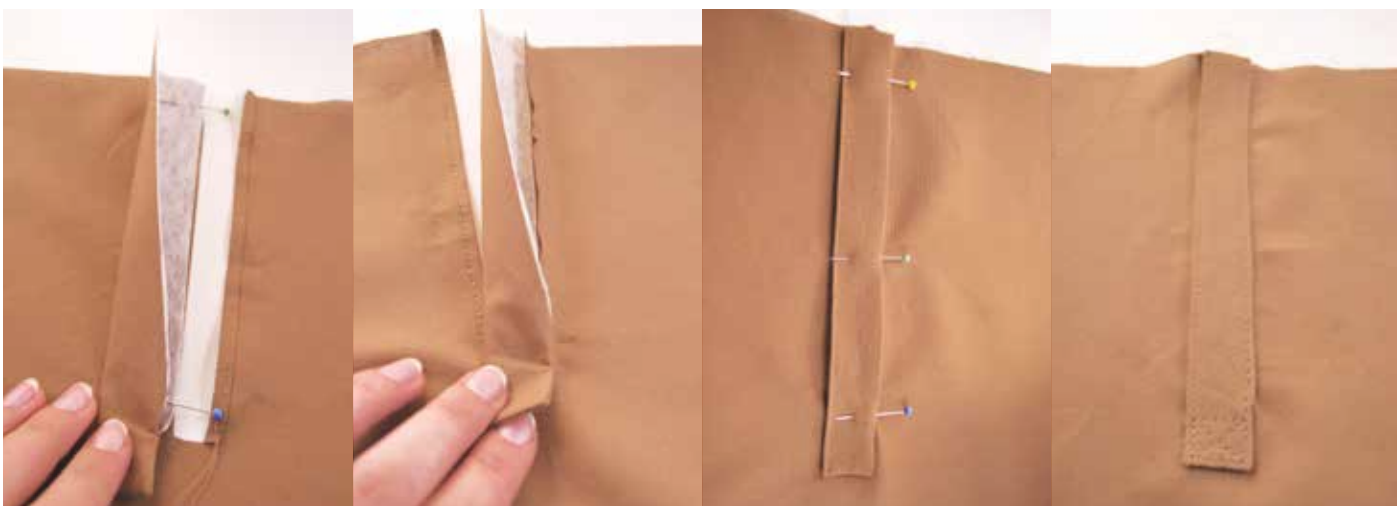


The second challenge is the cuffs.
This variant is for sleeves with a slot for opening the cuff.
First, cut the marker for the sleeve slot and place a narrow strip of tape.

This lets you see where the opening goes. Mark it with a pin or pen.
Fold the tape in the middle of its length. From the mark, you will then close the corner.
Turn the fabric right side out.



At the end of the slot, you cut approximately 5mm. There is sufficient space for folding the first edge over. You'll need to do a lot of feeling it out with your fingertips, since there are only a few millimeters to stitch.



Reverse the sleeve fabric and place the strip on the opposite side of the slot.

When the stripe is sewn, it is placed on the right side and pinned with the seam allowance. After

stitching on the sleeve, you can sew and adorn the stitched the free flap with a simple pattern.

These steps are repeated on the second sleeve.



The cuff is now attached to the reverse side of the sleeve with pins. Some sleeves are precisely flush, some have markings for wrinkles.

So the cuff lies well around the wrist, but with the help of the folds there is freedom for movement.

When the cuff is sewn, fold it in the middle and close the narrow edge. This is how it closes with the sewn-on stripe at the sleeve slot.



When the close-fitted seam allowance is stitched on both sleeves, you must make at least one buttonhole and a button on the cuff to allow it to close.



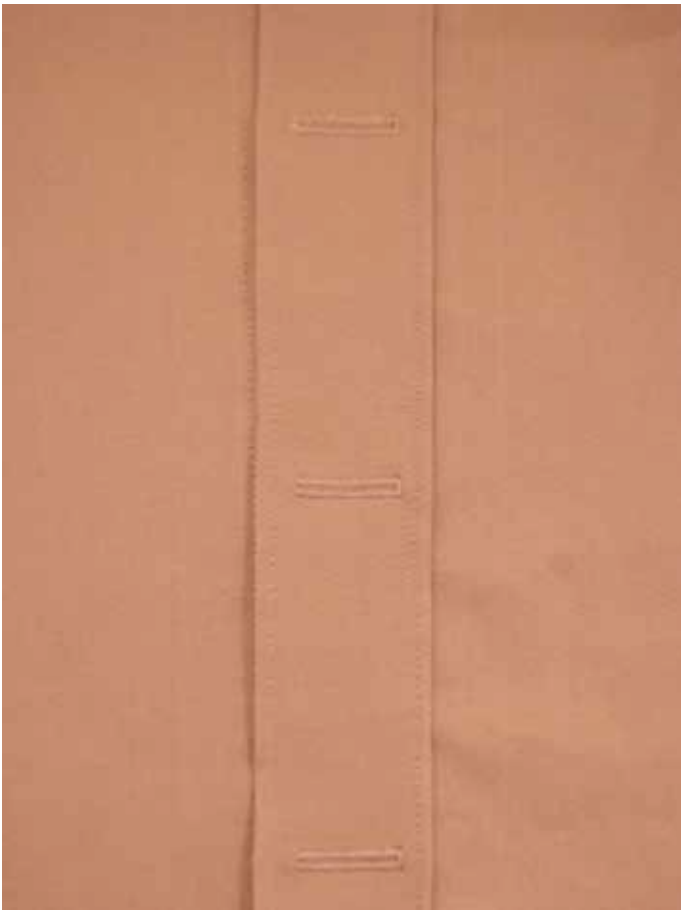


To attach both sleeves to the shirt, turn the sleeves right side outwards, and the shirt inside out.

With the curved side at the front, pin the sleeve to the sleeve hole and sew it into place.



In order for everything to be trimmed and not frayed, the lower edge of the shirt is sewn.



Also the shirt needs a few closures to be worn. There are usually 6 buttons along the bar and a small button on the collar. Buttonholes are usual-



ly 5cm to 10cm apart, and can be sewn horizontally or vertically.



VEST



Let's go to the last part of this book.

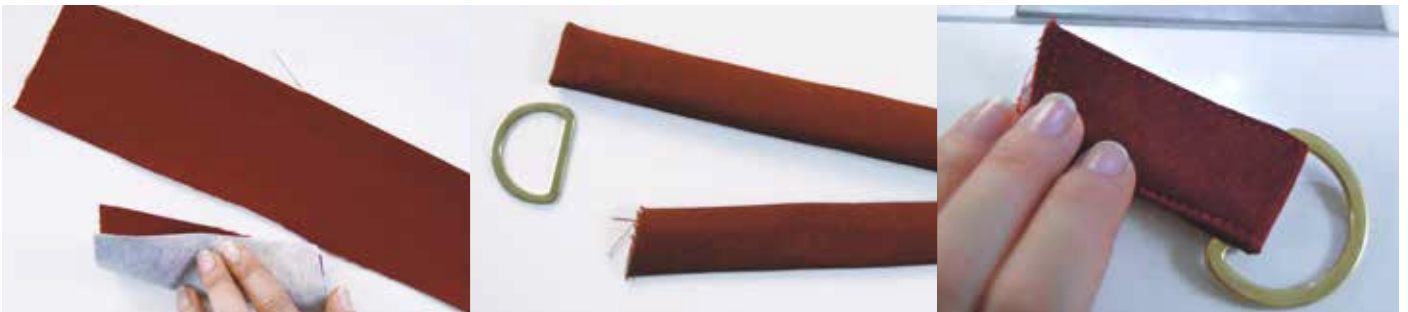
The vest is ideal for festive events, if you want to look serious.

The principle is similar to the jacket or the shirt, only without collar and without sleeves.

Your materials are:

The fabric of choice, a set of buttons and if desired a buckle for the back band.

Also, the buttonhole collar and once a collar around the neck is reinforced.



The backrest consists of two parts. A long strap, which is used for adjustment and then the small strap, which carries the buckle.

Both bands are sewn into tubes. With the longer band, you can close one of the ends and trim the

corners shorter so that you can turn it right side out.

Place the short strap as a loop through the respective buckle. Then sew the fabric with the buckle in the center of the loop.

If the back piece consists only of two parts, first sew the middle seam together.

In the case of a three-part back piece, consisting of two side parts and the middle, the waist height is marked. If you then connect the pieces of fabric, an opening for the back band must be left free at the height of the mark.





If the vest has separate darts in the middle of the back, cut a small hole in the middle of the marked area, large enough for the back band. Place the tape from the right side through the

hole and attach the dart.

When sewing, you automatically attach the band to the back piece.



You repeat that on the other side. Subsequently, the front sides are connected to shoulder and side seam.



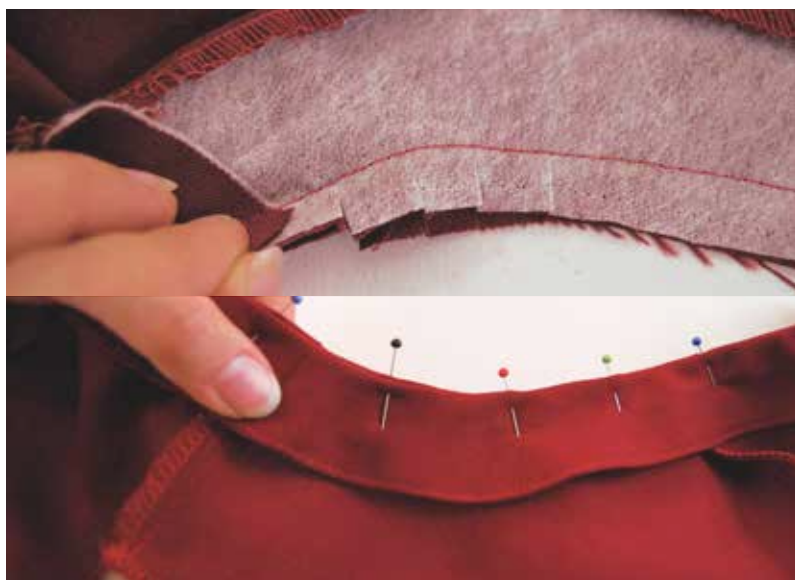
The collar for the vest consists of three parts, which are pinned, trimmed, and sewn into place. In this case it is usually only necessary to fold the edge once, as you sew the collar to the vest at

the end.

But first, the trimmings are attached to the vest.

Don't forget to shorten the edges.

You also cut along the curves at small intervals. Either simple cuts or whole notches. This gives you a soft curve when turning the fabrics.



The arm holes can also be sewn simply with a rolled hem to prevent fraying.

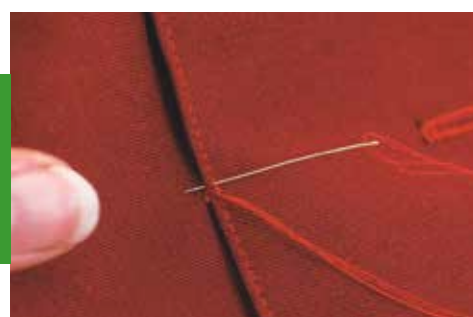
But you can use the same technique as the collar. Cut matching strips for the sleeveholes from where you take the pattern and always with around 5cm distance from the rounding marks. In the end you have a kind of inner lining for the sleeve area. Sew, fold and fix.

Finally, a buttonhole row is attached, which will be held securely by the trimming. Open up your buttonholes and sew on the buttons..

Your second costume is ready!
Now you are ready for your big moments with your hand-made costumes at events!

I wish you a lot of fun.

Tip:
With small stitches, you can sew the trimmings or inner lining quickly and easily to the costume.







Congratulations!
You have reached the end of my book.

Thank you for accompanying me on our little adventure. I hope you had a lot of fun and will use what you have learned. Do not be afraid of new projects, Techniques and, above all, experiments. Use the knowledge you acquire.

I wish you every success with your projects, be creative and always believe in your dreams.

And do not forget:
The adventure continues with every new project!

To be continued...

