



WIG STYLING

FOR COSPLAY

*Kinpatsu
cosplay*



About

My name is Tayla aka Kinpatsu Cosplay! I am a Cosplayer from Johannesburg, South Africa. I have been Cosplaying since 2012 and love making costumes both big and small for video games, anime and cartoons. Cosplay for me is an amazing way to express your creativity and have fun doing it! I have a passion for crafting and creating and over the last few years I have made over 100 costumes, you could say I'm a little bit of a Cosplay addict!

I try to make a new costume every month and create tutorials and booklets like these in order to help other crafters and Cosplayers in making their own amazing creations! I hope these small pockets of techniques and knowledge will come in handy and be useful! Thank you for your support!

Happy crafting xxx

Contents

Tools	4
Wig Types	7
How To Put on a Wig	8
Heat Styling Wigs	10
Cutting Wigs	14
Restoring Wigs	16
Dying and Coloring	17
Making Ahoge	22
Thickening Wigs	24
Spiking Wigs	28
Side Cut Wigs	30
Ponytail Wigs	34
Unusual Wigs	45



Tools

• Scissors

A pair of sharp scissors is what you need to cut your wigs. The sharper they are the easier it will be to style especially for super straight bangs. It's also a good idea to get a pair of thinning scissors to blend out the edges, thin hair and add layers.



• Hairdryer and Straightener

These tools are really important for setting and shaping hair. These are the most basic heat styling tools you will need and are super versatile, you can even make curls with a straightener!



• Brushes and Combs

There are a variety of different combs and brushes available for styling wigs. They can help you tame, section and tease wigs and are an absolute must for styling! I use a mixed bristle brush and a tail comb for most of my styling needs.



• Hairspray

For hairspray and setting, I recommend got2b hairspray. It is super strong and has great hold. Hairspray is what will need to achieve very strange gravity defying styles and adding tips onto spiked hair.



• Curlers

For adding curls to a wig you will need to use some kind of roller or curler to wrap your hair around while warm and let it set into shape. I use Velcro rollers for big wavy curls and soft snap rollers for smaller tighter curls.



• Pins and Wig Clips

Bobby pins and wig clips will help keep your wigs on your head while you are wearing them. The wig clips can be sewn onto the inside of the wig, hidden from sight and the bobby pins can be pushed into place making it so that your wig stays put the whole day.



• Clips

These kind of crocodile clips and claw clips will help with sectioning wigs and keeping hair out of the way while you are styling, making it much easier to see the underneath layers and control all the hair you are not currently working with,



• Wig Caps

These strange looking things are what you use to cover your own hair under a wig. Wig caps help contain your natural hair and keep it flat while also keeping the inside of your wig cleaner.



• Wig Head

A wig head is what you'll be styling your wig on most of the time as you can't always work on your own head. Wig heads come in a few materials and sizes and most can be used in conjunction with a wig clamp which it fits over.



• Wig Clamp

A wig clamp is a great tool that will keep your wig head secured to a table. To secure it in place you place it over the edge of a surface and then turn the nob at the bottom until it tightens into place. Then you can pop your wig head onto it and not worry about the wig head falling over during styling.



• Silicone Spray

Yes that's right, hardware store silicone spray can be used on wigs! Silicone spray is used to lubricate and reduce friction on surfaces and so it works perfectly on wigs as a way to stop them tangling! So if you have a very long wig spray a bit of this on it and brush it through to avoid knotting and tangling.



• Elastics

Hair ties and elastics are not always necessary but some styles call for them and you can also use them to section off pieces of your wigs. I like to use small clear elastics so they are not too noticeable in the wig itself.

Wig Types

Synthetic vs Human Hair

When looking at what kind of wigs to buy you might come across the terms human and synthetic wigs. 90% of the time you will not need to use a human hair wig, these wigs are normally very high quality and very expensive and are used for daily wear and use. Most cosplay wigs are made of synthetic fibers, these synthetic fibers can be heat resistant which allows them to be styled just like normal human hair.

• Radial Top Wigs

This style of wig is one of the most common for cosplay wigs, The hair radiates out from the very center at the very top of the wig and down. When parting these kinds of wigs be mindful of the mesh underneath as it can sometimes show through on thinner wigs.



• Skin Part Wigs

Skin part wigs have a built in parting onto the wig. This parting is normally a piece of silicone which has hairs punched into it, emulating what real hair would look like when parted on the scalp. Because these are built into the style be sure to choose one that best suits what you are looking for as moving the parting can be challenging.



• Lace Front Wigs

Lace front wigs are wigs that have a lace section on the front of the wig with hairs tied onto it. This gives these wigs a very natural appearance but often means they are significantly more expensive than standard wigs. Most lace fronts come with the large lace piece still attached so you can trim it to your liking



How To Put on a Wig

Step 1

On the inside of your wig you will find 2 small clips on either side of the wig. These are used to tighten a wig to make it fit and stay on your head better.

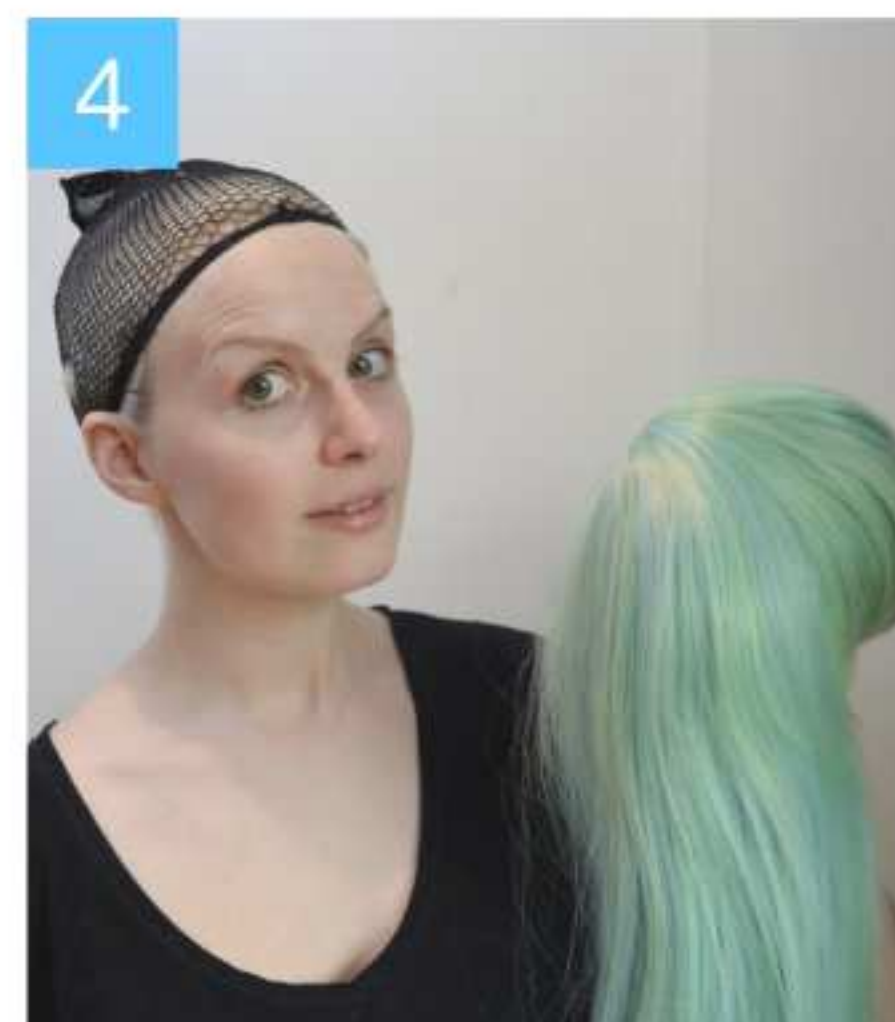
Before putting your wig on take these clips and latch them onto one of the hoops at the base of the neck, make it as tight or loose as you need it.



Step 2

Now you need to contain your own hair. So you need to take your wig cap and put it over your head, putting all your hair inside it and distributing it as evenly as possible so there are no lumps.

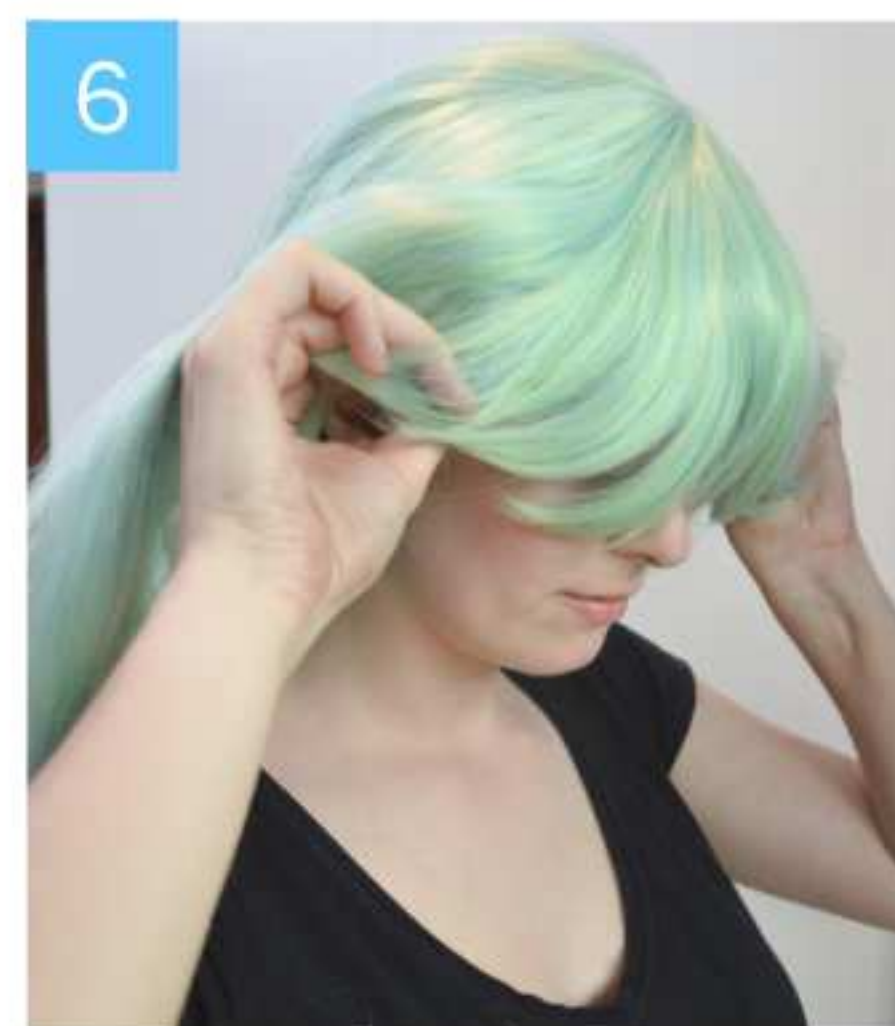
If you have very long hair and struggle with this you can braid it and pin it to the top of your head before putting the cap on to make this step easier.



Step 3

To put the wig on I normally position it from the back over my head, I take the very front of it and press it onto my forehead, then pull the rest of it down and over my wig cap snugly into place.

You can then adjust the wig as needed making sure it is sitting evenly and brushing out any tangles that may have happened while putting it on.



Tip:

To keep extremely long wigs from tangling too much spray silicone spray on them, it will keep them sleek and prevent knots from forming too easily.



Heat Styling Wigs

Whether its straightening or adding curls, changing the direction of a parting or setting some hairspray in order to style most wigs a little bit of heat needs to be applied. As I mentioned earlier the 2 main kinds of tools I use for heat styling are my hairdryer and my straightener.

Straightening

Most wigs straight out the bag are not really ready for wear and do need little bit of love to get them looking just right. This is especially the case with wigs that are very long and do not have curls or waves put into them. Wigs that are intended to be straight but have spent a lot of time in a bag will develop kinks and bumps that need to be ironed out with a straightener.

Before straightening your wig make sure you have brushed out any knots or tangles to make the process easier. You can then take your flat iron, turn it on to a lower or medium temperature and start pulling it down from the top of the wig to the ends, working around in sections.

When you get to the ends of the hair you can gently turn the iron inwards in the direction you would like the ends to curl.

For bangs you can do the same thing, just gently curl the iron inwards to help shape them and round them out. Holding them in place for a second to let them cool in the shape you want will help set the shape.



Note:
Not all wigs are heat resistant and even wigs that are heat resistant may not be resistant to the same temperature. Better quality wigs can take up to 210 degrees Celsius but some wigs can only take 60 degrees. So test on a small section of hair underneath the wig if you are unsure how it will react to the heat.

For more pronounced curls and turns on the ends of your wigs you can use hair rollers to help set the shape, simply heat the hair with your flat iron, then wrap it around the roller allowing it to cool in place.

It is important to let the shape fully cool down before taking the roller off. If the hair is still hot or warm is will droop back down. The cooling process is what will completely set the shape in place.

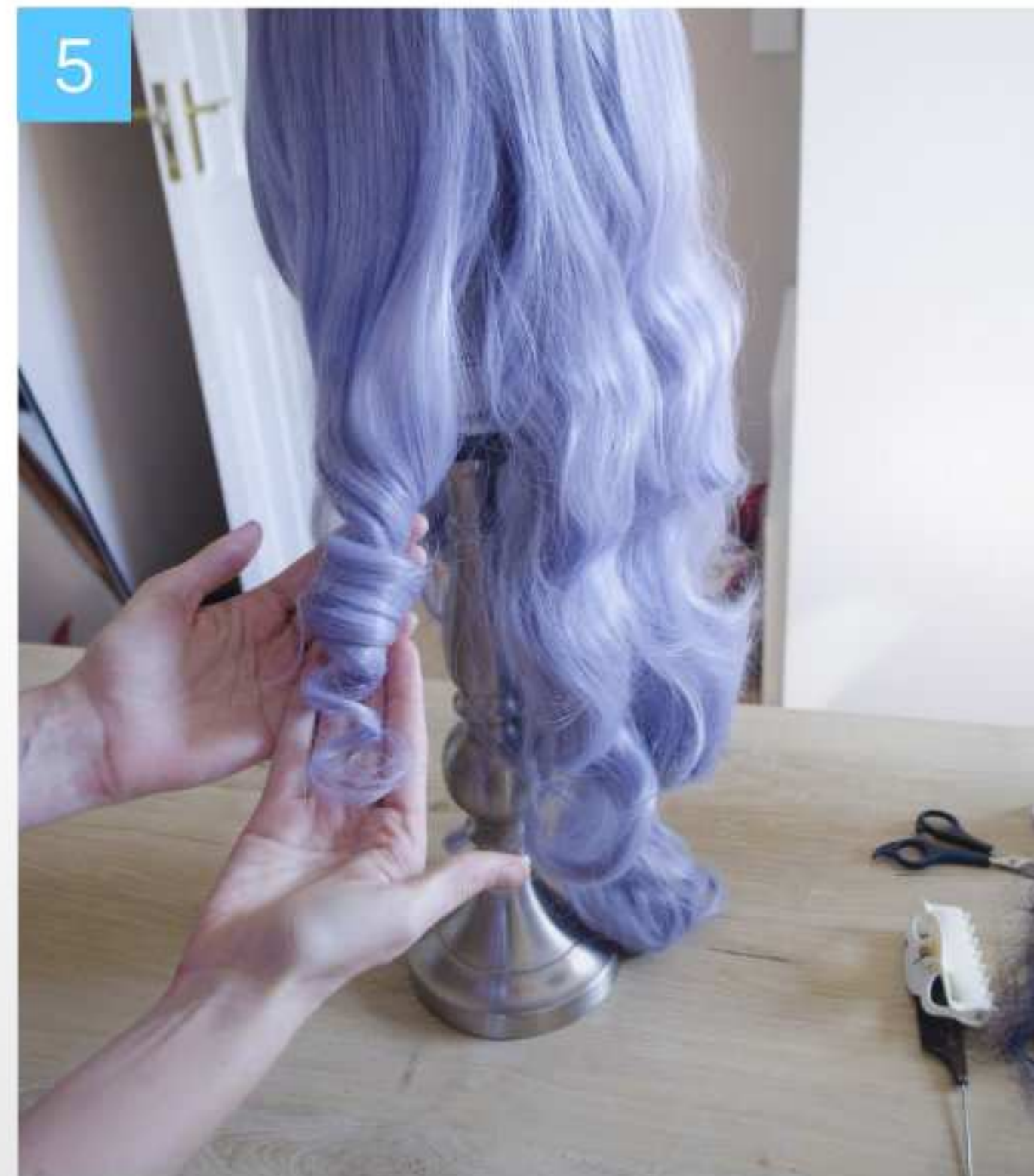
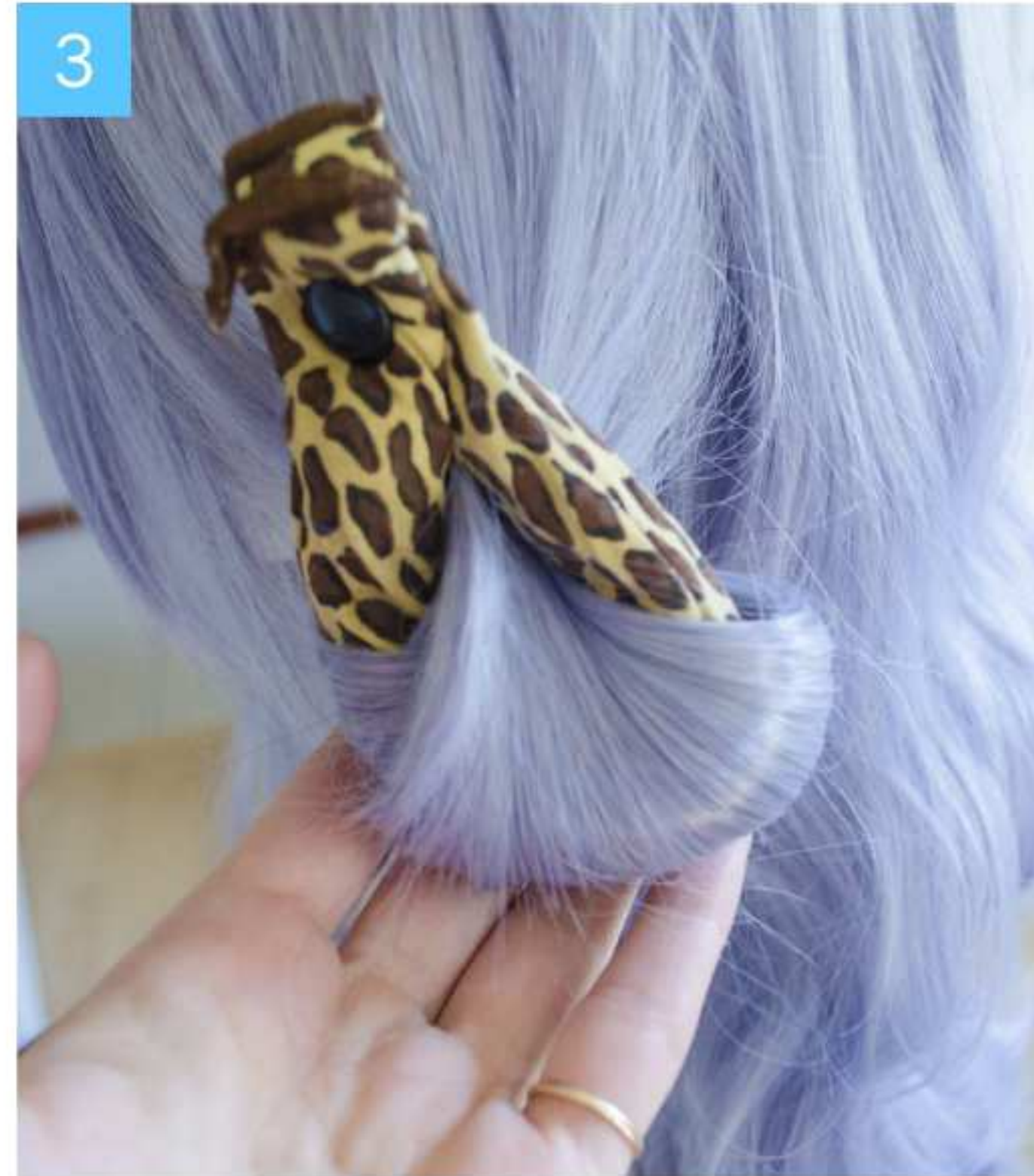
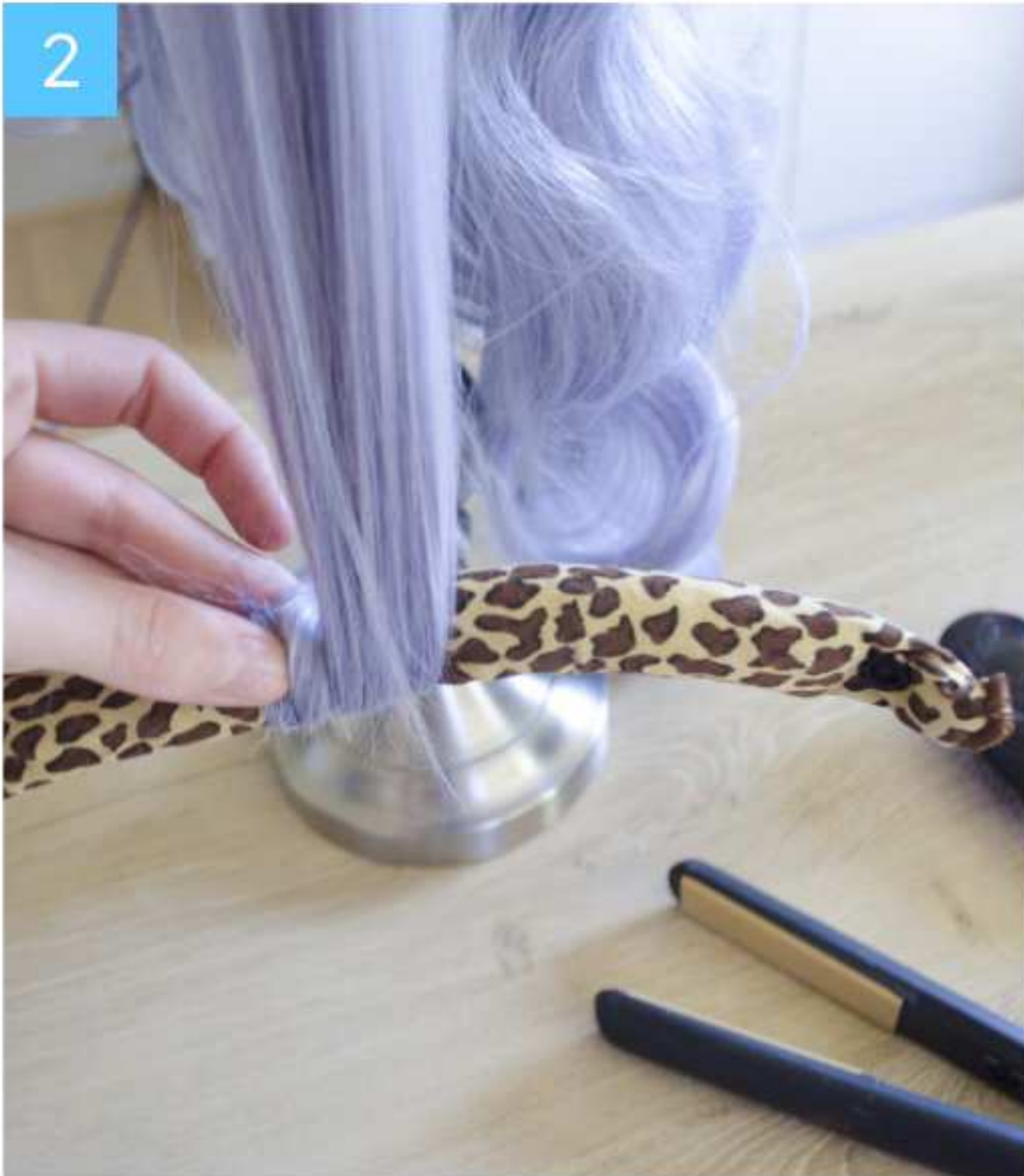
Tip:
If you are working with a less heat resistant wig that is delicate to the heat you can spritz it with some water in a spray bottle to help protect the fibers from the heat while you straighten.





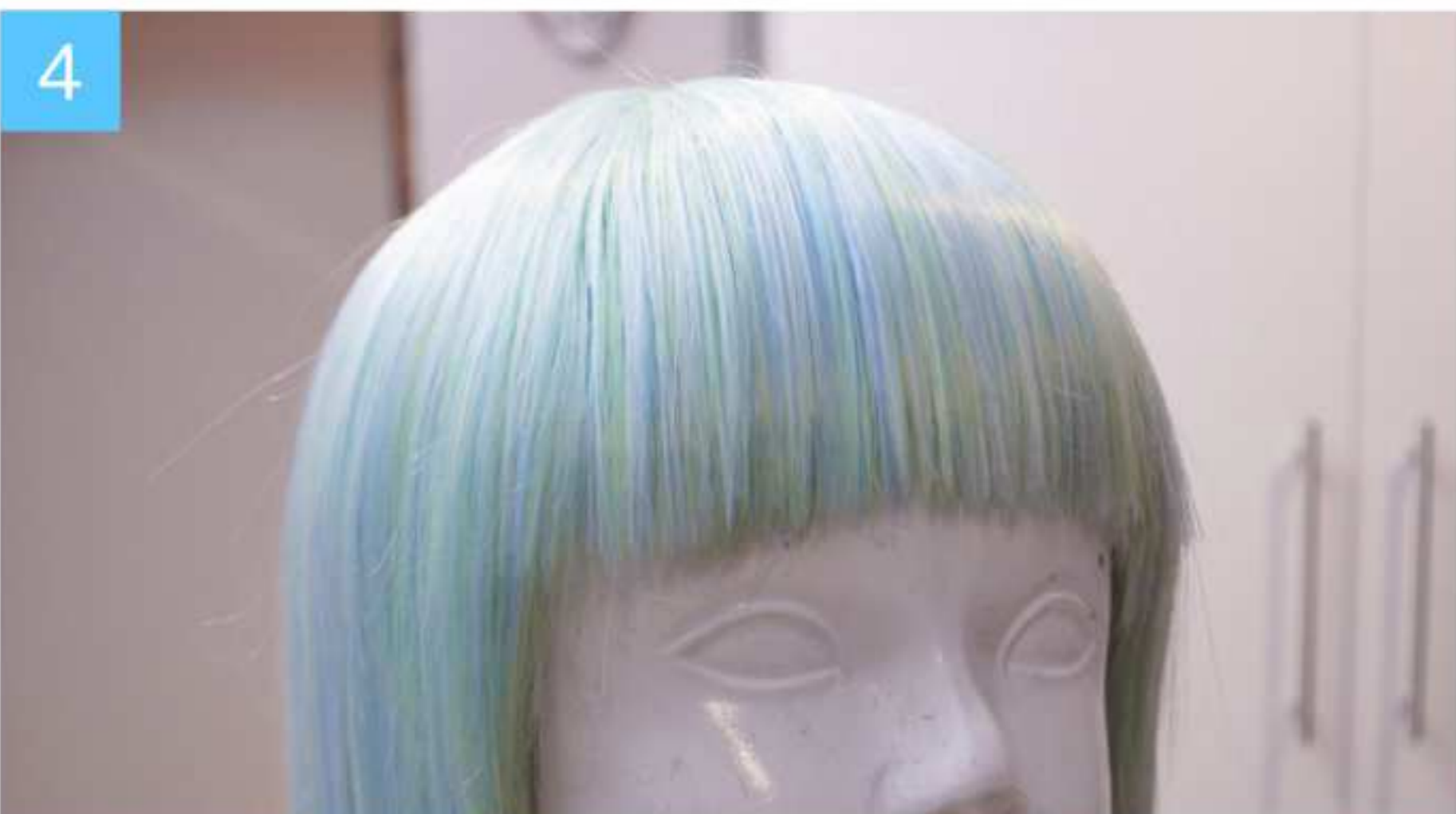
Adding Curls

Most of the curls I put into my wigs are achieved with my straightening iron and my rollers. I take the section of hair I am working with, heat it up with the straightener, then wrap it around the roller and let it set completely. Once the rollers have cooled down I then remove them and unwind the curls.



Tip:

Brushing curly wigs can just make them look super frizzy, to fix this, wrap and shape the curls with your finger to tame it and give the curls more structure again.



Cutting Wigs

Now for one of the most terrifying parts of wig styling : Cutting. Nothing is more scary than chopping off pieces of hair that you know will not grow back and are gone forever. When cutting wigs it can be very easy to make mistakes if you are going in too fast, but if you work slowly and carefully you can achieve the results you want without having to start over.

Cutting Bangs

When cutting your bangs for wigs you want to get them to sit nicely and frame your face. This is why I suggest starting to process with the wig on your head so you can gauge how short you want your fringe to be. So I put the wig on my head and then I took a pair of scissors and cut just below where I ideally wanted my fringe to be, leaving just about 1cm from where I actually want it to sit. Rather cut it a bit too long at first to see how you feel rather than going to short too quickly.

Once I was happy with the position of my fringe I then popped it onto my wig head to finish the process. Now remember how earlier I left that 1cm extra length on my fringe? Its so that I can now go in and neaten it up and make it super straight!

So to do this I take my comb and my thinning scissors and just cut and cut into the wig.

Tip:

Make sure your wig have been properly straightened or curled before you cut into it, if you cut your wig then straighten it afterwards you will have uneven pieces on the ends.

Why thinning scissors? I find that thinning scissors don't leave such choppy lines and give a much softer appearance on the bangs.

Once you have your straight line for your bangs now you take the thinning scissors and cut vertically into the fringe to thin it out and make the ends less chunky.

When you are done cutting give it a good brush to get any excess hair clippings off and now you have a beautiful set of straight bangs that aren't hard and jagged.

Cutting Pieces

To cut ends or pieces of wigs for spiking you can take your scissors, pull the hair to the correct length then make a cut with your standard scissors.

Once you now have the right length you can take your thinning scissors and work and cut into the ends of the piece, thinning it out so the end is softer or more pointed.





Restoring Wigs

Styled a wig and want to start over? Teased too much and now you want to go back? Or just have a super messy wig that needs some TLC? Here's how you can restore those matted messy wigs to looking decent and smooth again.

Step 1

Start by brushing out the wig with a multi-bristle brush, these are gentle on synthetic fibers.

Step 2

If you have deeper knots use a comb to work them out slowly and gently.

Step 3

If there are any very small tight stubborn knots you can carefully cut them out.

Step 4

The hair will be frizzy after brushing, so use your straightener to iron it out and make it smooth again and then your wig will be good as new!



Dying and Coloring

There are times where the color of a wig needs to be changed or things like streaks and ombre need to be added onto a plain wig to spice it up. Here are some ways of achieving these color changes.

Ink and Alcohol

This is the main method I use to dye my wigs and add a gradient effect to some of the styles. Here is what you will need!

- 70% rubbing alcohol
- FW ink or Sharpies in your desired color
- Base wig
- Spray bottle
- Brush
- Rubber gloves

Tip:

Its is possible to dye light wigs darker and add color to them but you can't really make dark wigs lighter. If you want to add light pieces to a dark wig you need to either use additional hair or splice wigs.

To start the process you set your wig up on a wig stand and put on your rubber gloves.

This process will stain your hands and anything else you spray onto so I suggest putting down a tarp or covering to protect any furniture or doing it outside.

You then take your 70% alcohol and pour it into the spray bottle.

Now you can take your ink or your sharpie and pour some into the bottle with the alcohol, for sharpies you will need to cut the center out and put it into the alcohol.

How much ink you need will depend on the shade you want and how strong you want the color to be.





It's a good idea to test the color on a small piece of hair you can cut from the nape of the neck to make sure it's right before spraying onto the wig.

Once you are happy with the color you can spray it onto the wig.

For wigs that you want to dye a single, solid color you can spray the wig with the ink and work it into the fibers evenly. You can use your brush to brush to comb and distribute the ink evenly throughout the hair.

For gradient dyeing you need to have a bit more control and work with more care. I would suggest wrapping the ends of your wig in plastic so you don't get any color on them.

Then just like before you will spray the ink onto the wig, and take your brush and comb and work the ink through the fibers, don't wig into a gradient.

This step can be tricky so work slowly and carefully, don't go too fast as it's easy to put too much ink into the hair at once.

For my Arcade Miss Fortune wig I had to repeat this process with 3 different colors, starting at the top of the wig and brushing the ink down until it began to fade out, then swapping to purple and again carefully spraying and brushing in the color, and finally adding the blue on the ends.

For more basic gradients on wigs it is much easier as you will only have to worry about blending 1 color, which is a lot less stressful.

For my Star Guardian Ahri wig I used this same technique to add pink ends to my orange wig and for my Harley Quinn I added a gradient to some ponytail ties.



What about the color coming off on my clothes?

If you are concerned about the color coming off onto your skin and costume you can rinse the wig in some cold water to remove any excess color.



Hair Chalk

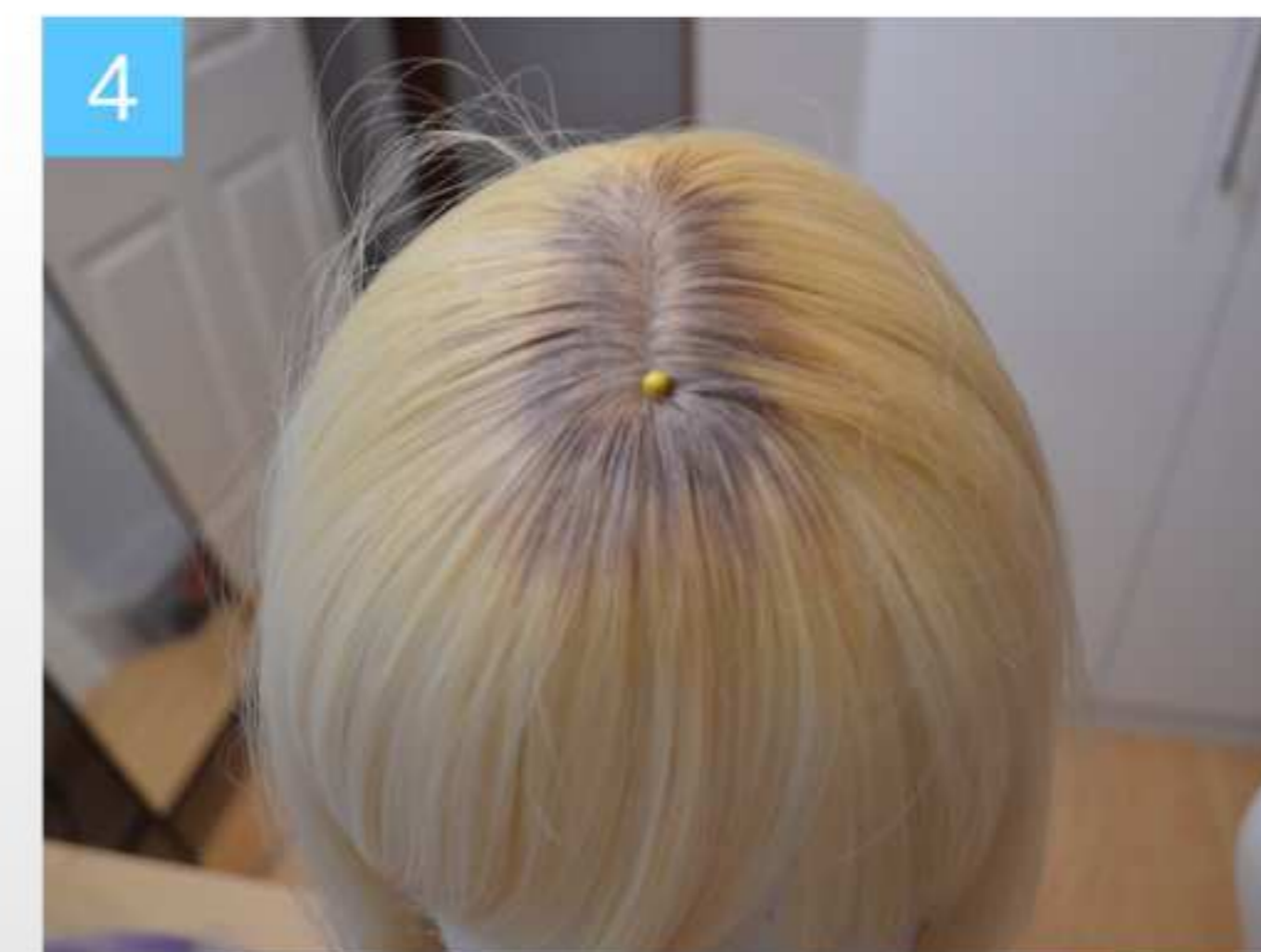
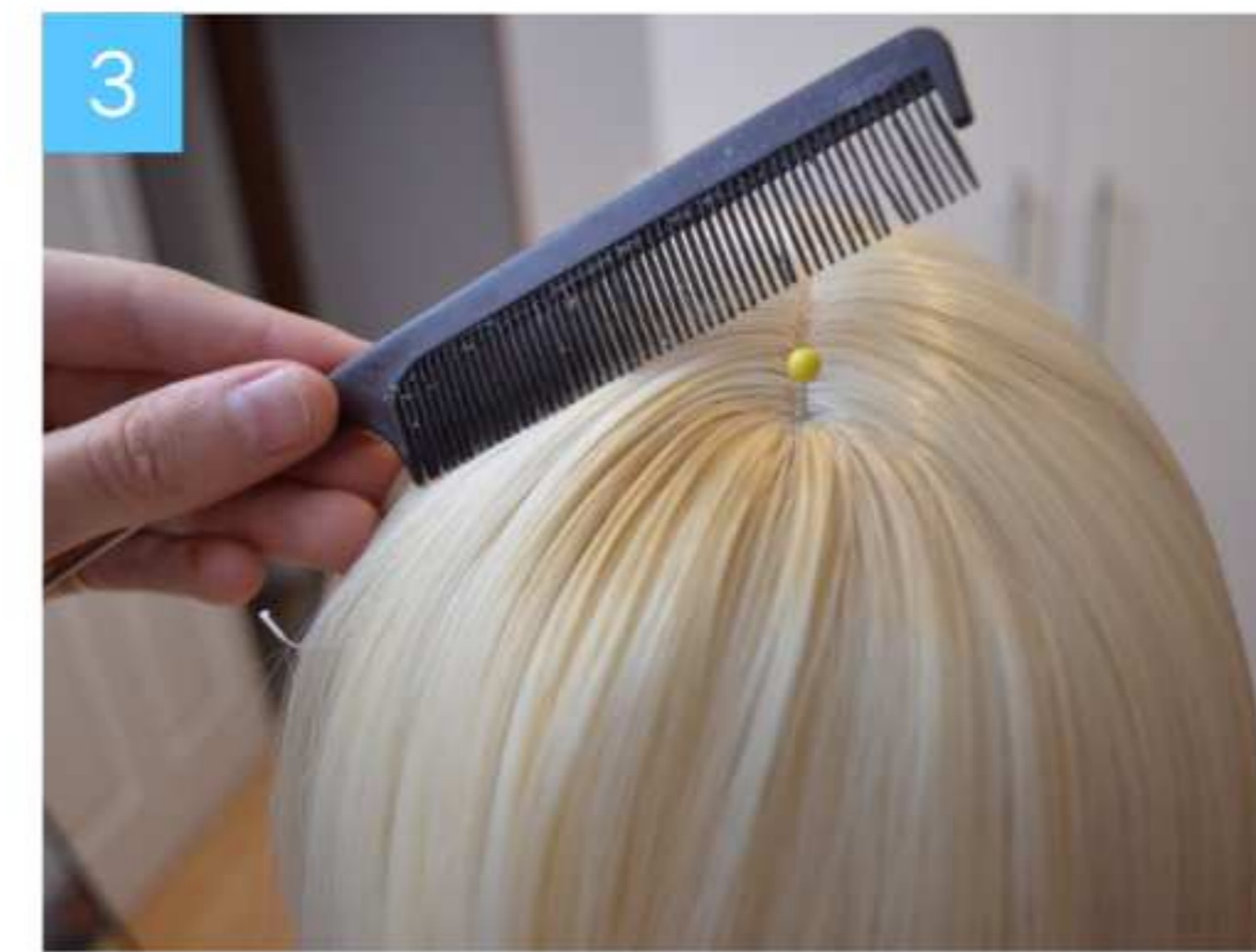
This is a really simple fun alternative to add a splash of color to your wig!

Activate the hair chalk with a little bit of water.

Then you can apply the chalk along the strands of hair you want to add the color to.

To spread the color more evenly you can use a brush to brush the color through the fibers.

Hair chalk will however wash out and is not permanent so if you do get it wet the color may run and will not stay! But its great if you just want a temporary solution and don't want to completely alter your wig!



Markers

Just as I mentioned before you can use markers and sharpies to add color to your wigs! These are really nice tools for adding things like streaks of color or dyeing the roots of a wig.

Making the roots on a wig darker can give the wig a much more natural appearance. To do this you will just need to take your base wig, your markers and a comb. Then starting with the lighter colors draw onto the wig where you want the darker area's to be, and brush this through with your comb to spread the color evenly. For sharpies you can add a bit of alcohol with a cotton bud to help spread the color.

You will repeat this process, adding darker shades as you go up to the root until you are happy with the color.



Making Ahoge

Have you ever seen an anime character with a strange antenna like piece of hair sticking out their head? That is ahoge! In this section I will show you 3 ways to create these little gravity defying hair flicks.

1 - Elastic Bands

This is the simplest way to make an ahoge, all you need to do is section off a piece of hair on top of your wig and tie an elastic around it. This is an easy way to make a double or single ahoge but unfortunately this only works for short pieces of hair, for very large ahoge you will need some more structure and support!

2 - Teasing

The second way to make an Ahoge is just to take a strand of hair and tease it to the base to get it to stand up a bit, you may need to trim the hair with your thinning scissors to create layers for this if your wig is too smooth.

Once you have teased you can now brush the outside layers smooth and set it in place with some hairspray and a hairdryer.

This method has a bit more structure and can give you bigger Ahoge but again there is a limit to how big.

3 - Wire frame

The final method is to use a small wire frame to support the hair!

Just take a bit of wire and cut it to the length you want, then bend a small round base for it to press on to keep it upright.

You can now take this frame and put it under the wig and poke it through the top, then you can take your hair and use hairspray to set it around the wire.

This method gives you a lot of support so you can make very big Ahoge like the one pictured in my Rias Gremory cosplay.



Tip:

Always take a wig emergency kit with you to a con to keep your wigs looking sharp throughout the day! A hairbrush, extra pins and some hairspray can help you fix and wig troubles on the fly!

Thickening Wigs

Lets talk about big hair and 4 ways to achieve more body and volume in wigs that might be a bit flat to begin with.

Combining Wigs

One method of making wigs thicker is just by adding more hair! This is a really good technique for wigs that are too thin and have the mesh showing through the hair. When combining 2 wigs together you will strip the 1 for wefts and add it into the other.

To take the wefts out of the wig you can just use a pair of scissors to gently trim the thread, then pull the weft off, this process is time consuming and instead of using another wig some stores offer wefts that you can just buy to add in.

Once all the wefts have been removed you can now start to add them into the other wig. Start from the bottom, lifting up the hair to reveal the wig net and then carefully glue or hand stitch them into place.



Crimping Hair

So while combining 2 wigs together gives you more hair it may not exactly give you that very big poofy look you're going for. Another way to achieve even bigger hair is to crimp the inside layers for volume.

You can use a crimping iron to crimp the hair or you can use the method I will show you now which only requires a straightener or a crimping iron.

If you are using a crimping iron it will be really easy to iron in the corrugated texture into the hair.

If you do not have a crimping iron and you only have a straightener you can still crimp the wig but it will take a bit more time.

To start you need to fully braid the inside of your wig, make sure to leave enough hair on the outside though that is still straight to cover the texture.

Once you have your braids you can now take your straightening iron and go over them. Let them cool down completely and then you can undo the braids and brush it out, and you will see the hair is now very poofy.

You can use the outside layers to conceal the crimp texture and it will give you the extra volume you need.

To finish up this Nejire Hado wig I just brushed over the straight pieces of hair, trimmed and styled my bangs and then used some hairspray to twist the 2 tails at the end of the wig and set them in place with my hair dryer.

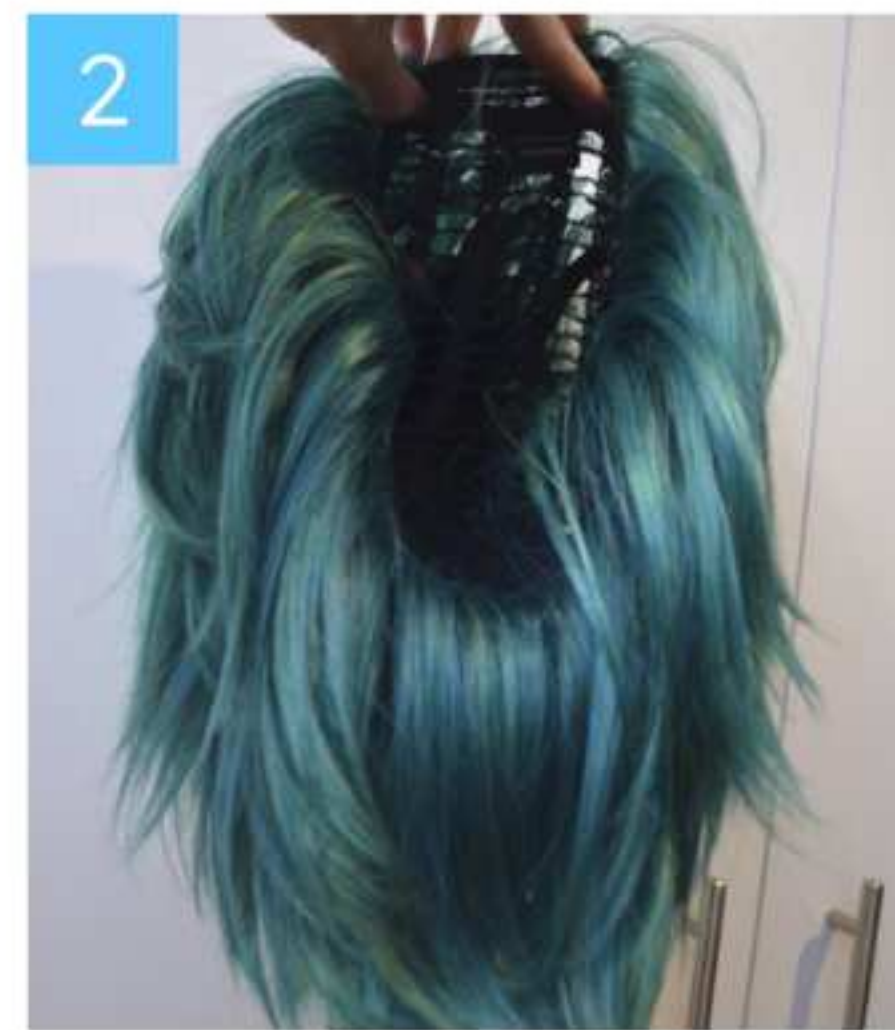
Blow Dry Upside Down

This is a quick easy method to get a lot of body on much shorter wigs!

Take your wig and hang it upside down, then put your hairdryer on and blow dry the wefts down in the opposite direction that they lie. Let it cool down while still hanging upside down.

Once its cool and the style is set it will be a nice poofy wig which you can style and spike to your liking!

This technique is great for character like Midoriya Izuku from my hero academia who have super fluffy hair.

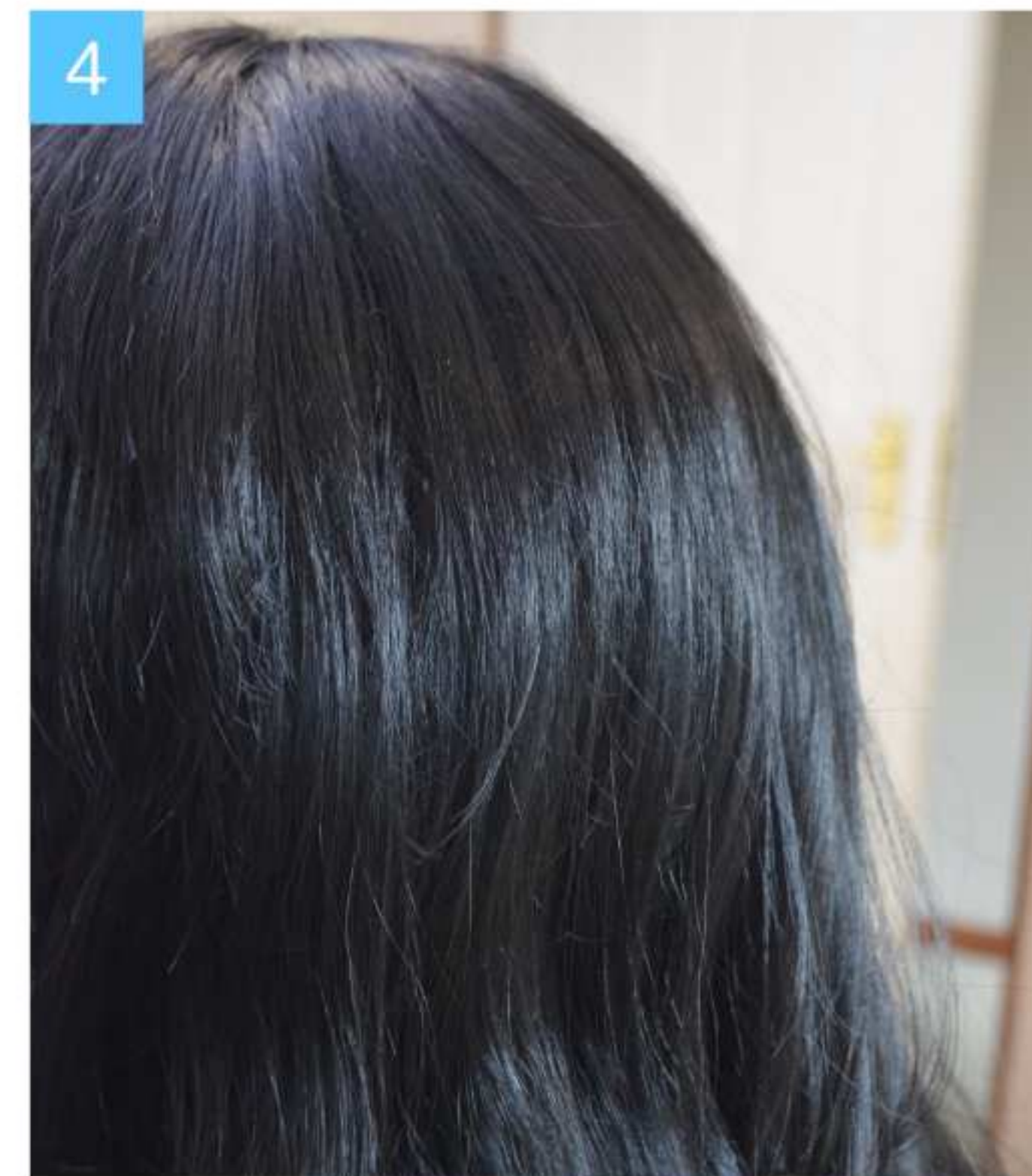
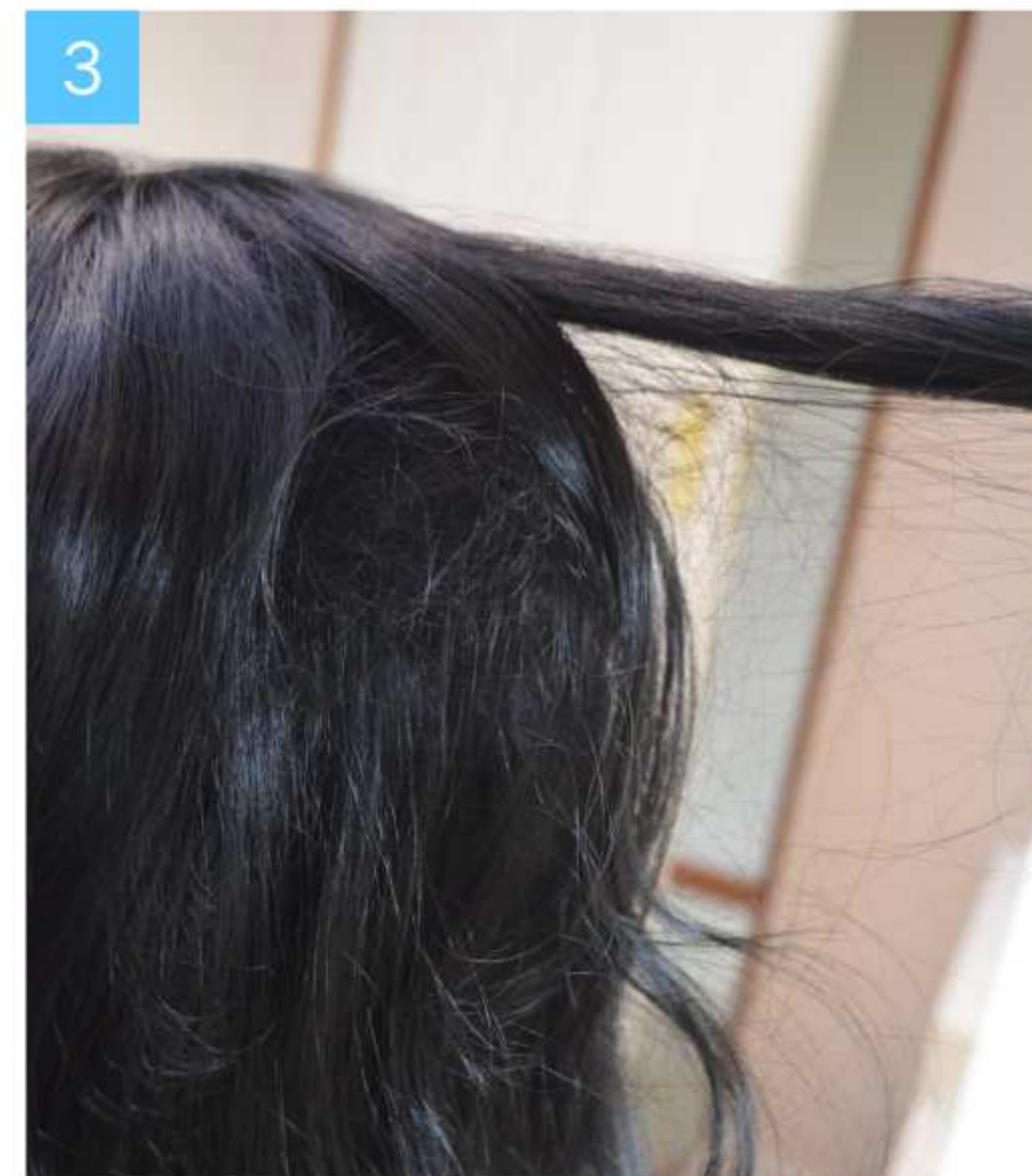


Teasing

One more way to add extra volume to your wig is to tease it!

Teasing hair is where you take the hair and comb it backwards, bunching the hair together. It looks messy and crazy but it gives you a lot of structure and body for styling!

To tease a wig bigger start from the bottom layers and work your way up. Section all the hair upwards and then start to tease the hair to the roots, when you finish one layer, pull the next layer down and tease again, when you start to approach the top of the wig do not tease the outer layer of hair. You need to leave enough hair on top to hide the teased parts underneath. This is how you can ensure your wig will still look neat!



Spiking Wigs

Many characters tend to have spiky hair, particularly in the anime and final fantasy universe! Here's how to make those pointed pieces of hair.

Step 1 : Cut and Feather

Cut the piece of hair to the length you want the spike to be, then use your thinning scissors to feather the end and thin it out into a point.

Step 2 : Spray

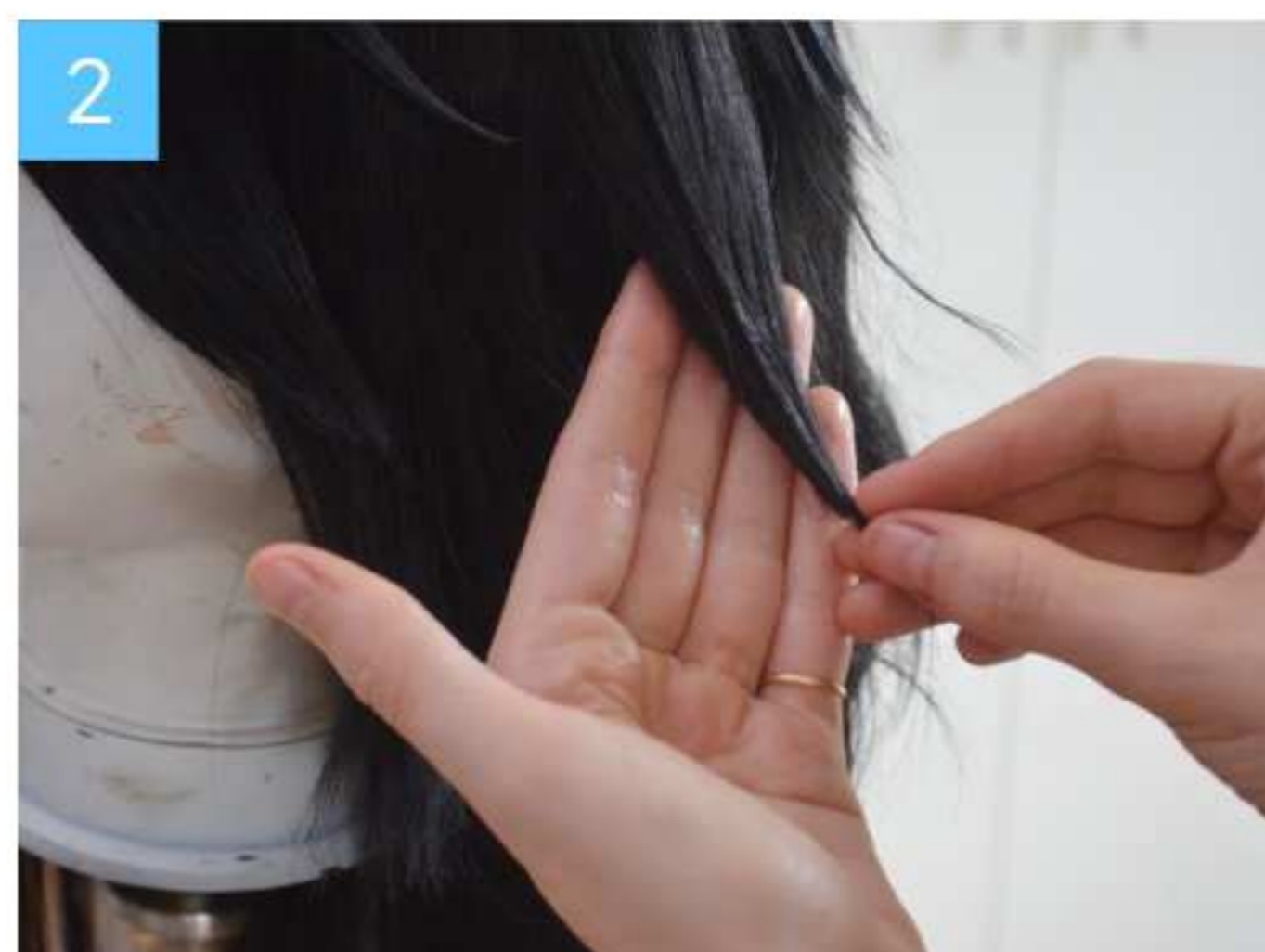
Take your hairspray and spritz the end of your point

Step 3 : Shape

Using your fingers work the hair into a point pressing the hair together, you can use a hairdryer to set this and speed up the drying process of the hairspray.

Step 4 : Trim

Once you have your spike if there are any stray pieces simply trim them off so it looks nice and neat.



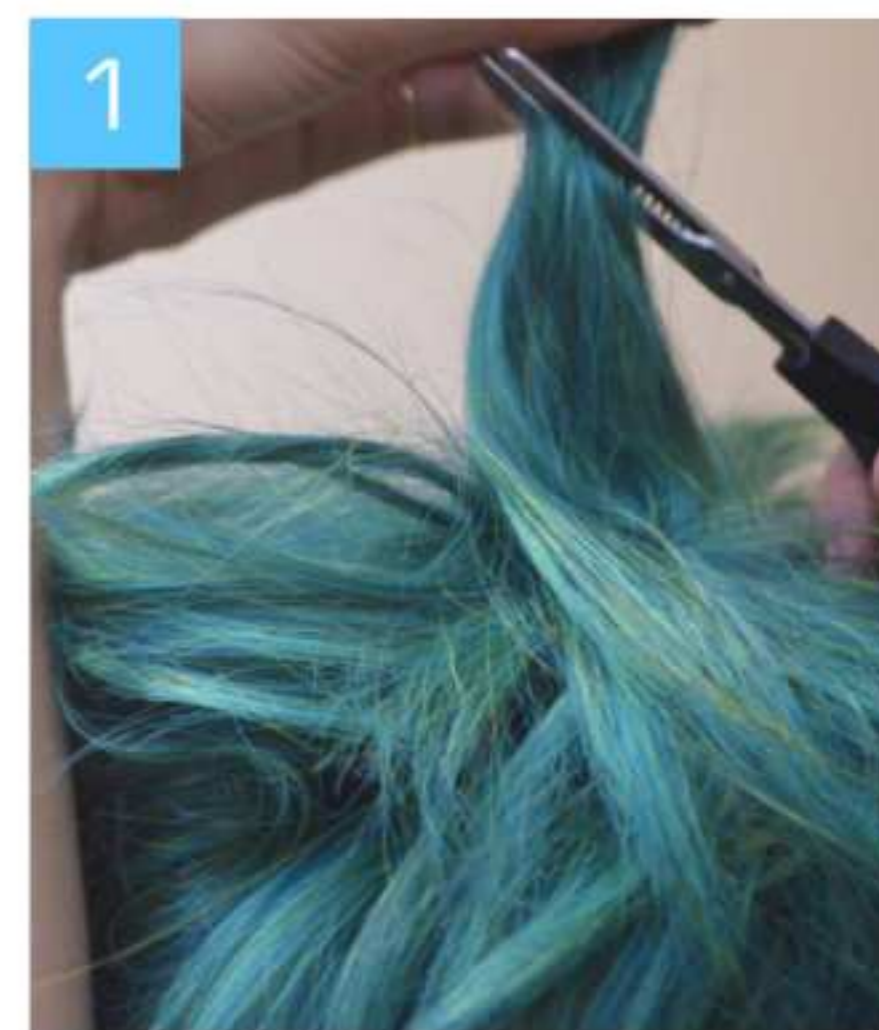
For shorter spikes, trim the end with the thinning scissors to create layers and thin it out into a point.

Then you can tease and back comb the base to give them more structure and support.

You can then brush the outside layers of hair smooth with a comb over the fluffy pieces.

And finally you can point the spike into a tip with hairspray and set it with a hairdryer.

This method is great for most of your shounen anime characters!



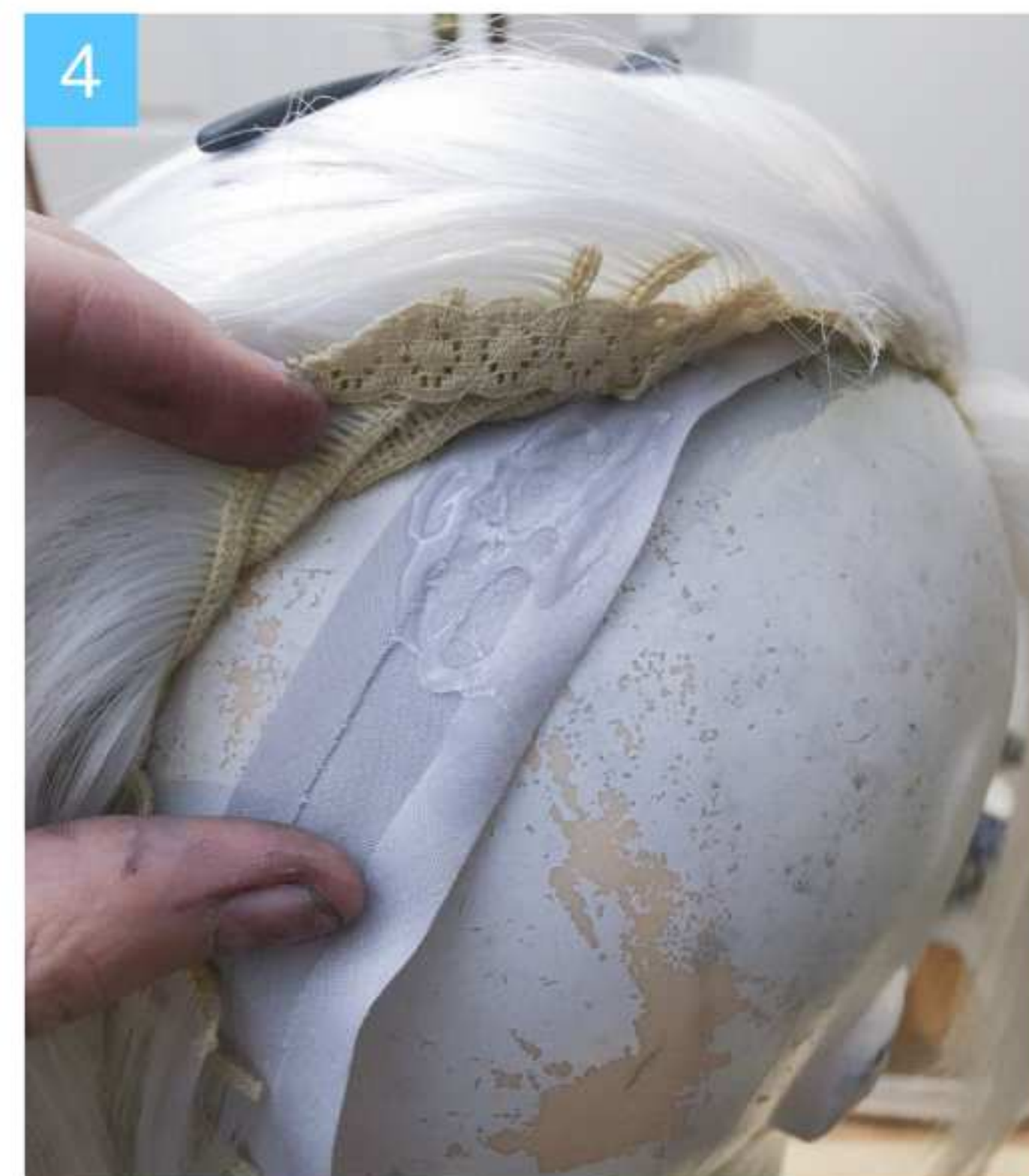
Side Cut Wigs

Seen on characters like Johanna from Heroes of the Storm, Pentakill Kayle from League of Legends, Sombra from Overwatch and Marceline from Adventure Time, Side cut wigs look super bad ass and can be achieved with your wigs without having to shave your own head!

Here's what you will need :

- A Base Wig
- Bias Tape in a Similar Color
- Hot Glue
- Wig Clips and Bobby Pins
- Hairspray
- Brush

The start of this process is the scariest and more heart wrenching part. You are going to take your base wig, select where you want the side cut to start. And then literally cut off the entire section of wig that you want to look like its been shaved. Like completely. Gone. There will be nothing there!

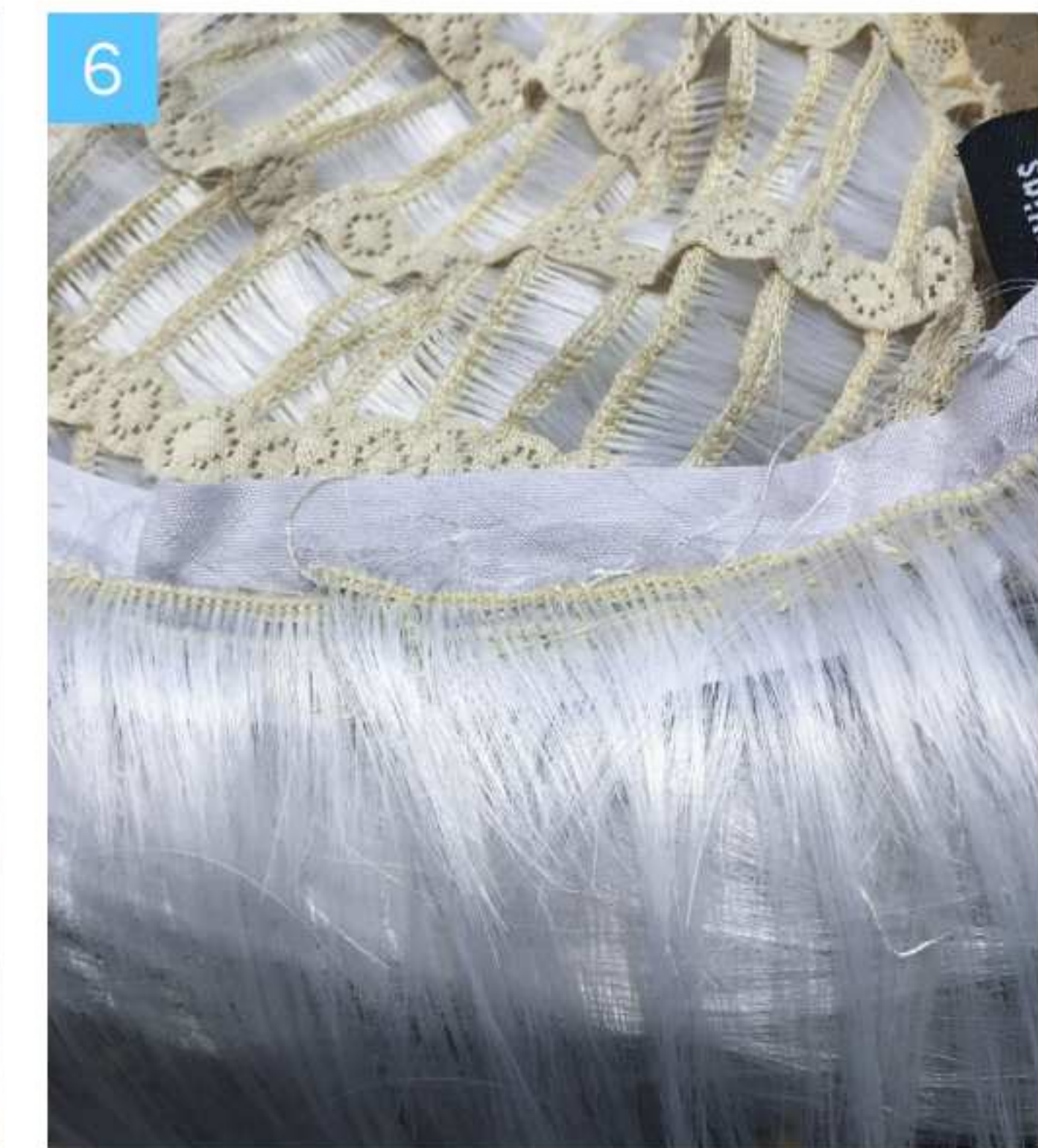


Once the section of wig has been removed do not throw it away, you will need it for wefts later.

The next step is to secure the edge of the wig again. Take some bias tape in a similar color to the wig and hot glue it underneath the wefts that are exposed. This will stabilize the wig and help it keep its shape on that side.

You can now take the wefts from the off cut piece of wig, and glue them onto the underside of the wig where the bias tape is.

To completely hide the rests of the wefts, stick a layer of wefts in the opposite direction, then you can bend them over and use a hairdryer to set them with heat, so that the hair will hide the line of stitching on the wefts.





When you are finished hiding the edge with wefts you can place the wig back on the wig head and finish styling and spiking it.

Now obviously you can't put a wig cap on before putting this on your head. So there are 2 options to wearing a wig like this.

The first is that you use your own hair, if you have very short hair this will be fine and you can put the wig on as is.

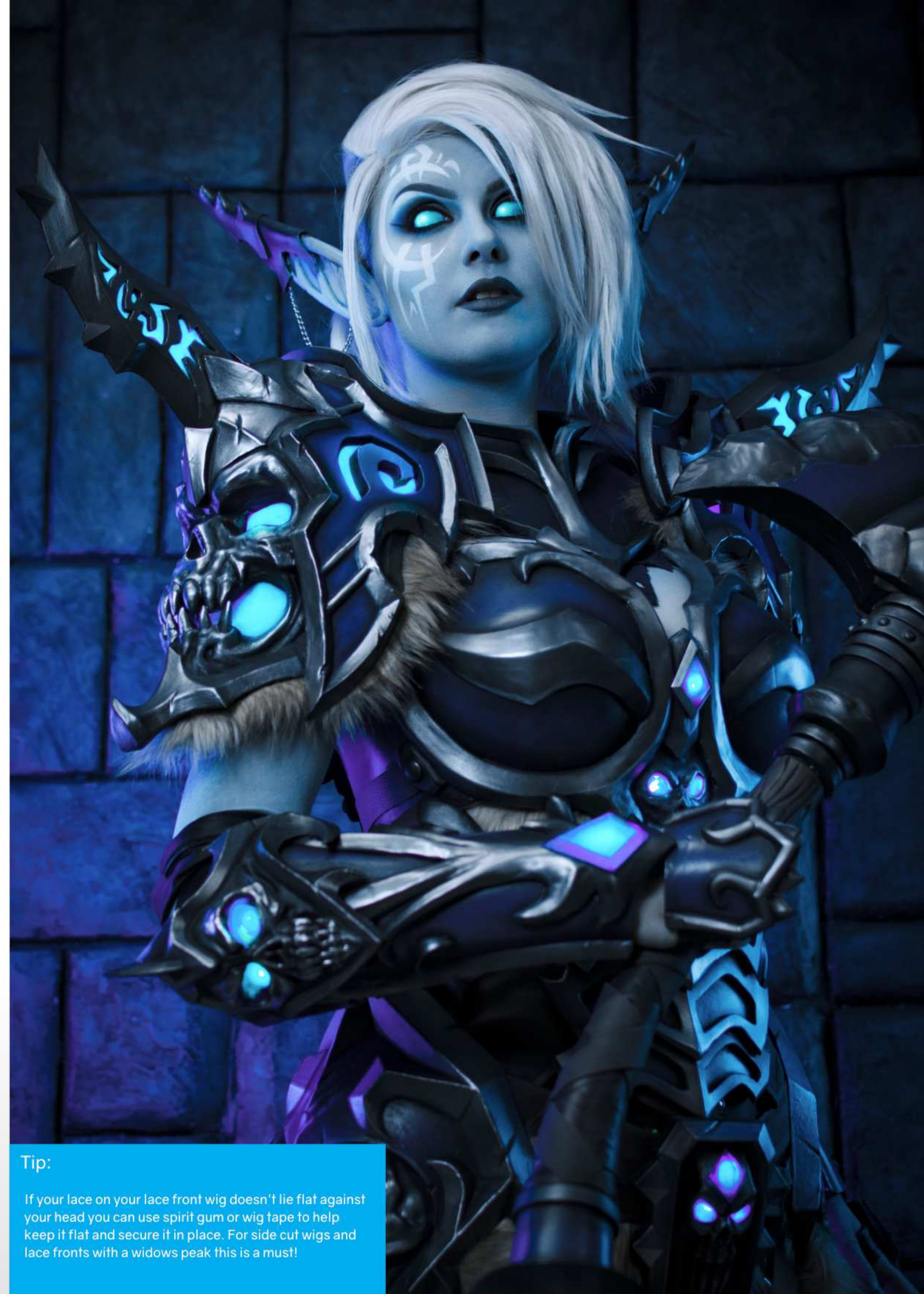
If you have longer hair you will need to tie it up to the side of your head and pin it into place.

If your hair is not the same color as the wig you can color it with hair hairspray or body paint.

You can then pin the wig into place with bobby pins or sew more wig clips to the inside of it to secure it.

The second option is for you to apply a full bald cap before putting this kind of wig on.

You would apply the wig with spirit gum or pros-aid to have the wig stick to the cap.



Tip:

If your lace on your lace front wig doesn't lie flat against your head you can use spirit gum or wig tape to help keep it flat and secure it in place. For side cut wigs and lace fronts with a widows peak this is a must!

Ponytail Wigs

While clip on ponytails work fine for some styled they sometimes fall flat and don't quite have the same impact as a high up, very full ponytail. In this section I will show you how you can achieve super pumped up ponytail wigs! Here's what you will need:

- Hairdryer
- Straightener
- Hot Glue
- 2 Wigs or a Wig & Ponytail Clips
- A Nail or Bolt
- Worbla Scraps
- Polystyrene or Insulation Board
- Scissors
- Thinning Scissors
- Hairspray
- Brush



Yoko Littner Wig

So Lets begin by taking a look at how to style this Yoko wig!

For this version of the ponytail wig I'm using 2 wigs. I used 2 long red wigs because this was all I had access to and they cost \$18 each from a local wig store near me.

If you can find 1 short wig and 1 long wig it will help you with less styling work.

So the first step is to take 1 of those wigs and strip it for wefts. You will use those wefts to cover your ponytail. The next step is to create the actual shape of the ponytail. To do this I am using insulation board. I draw out a shape similar to a hot air balloon and cut the shape out twice.



Make sure you also cut a channel in the middle for your nail to go through.

I then glued the 2 halves together, and using a craft knife I carve the foam shape into a nice round form.

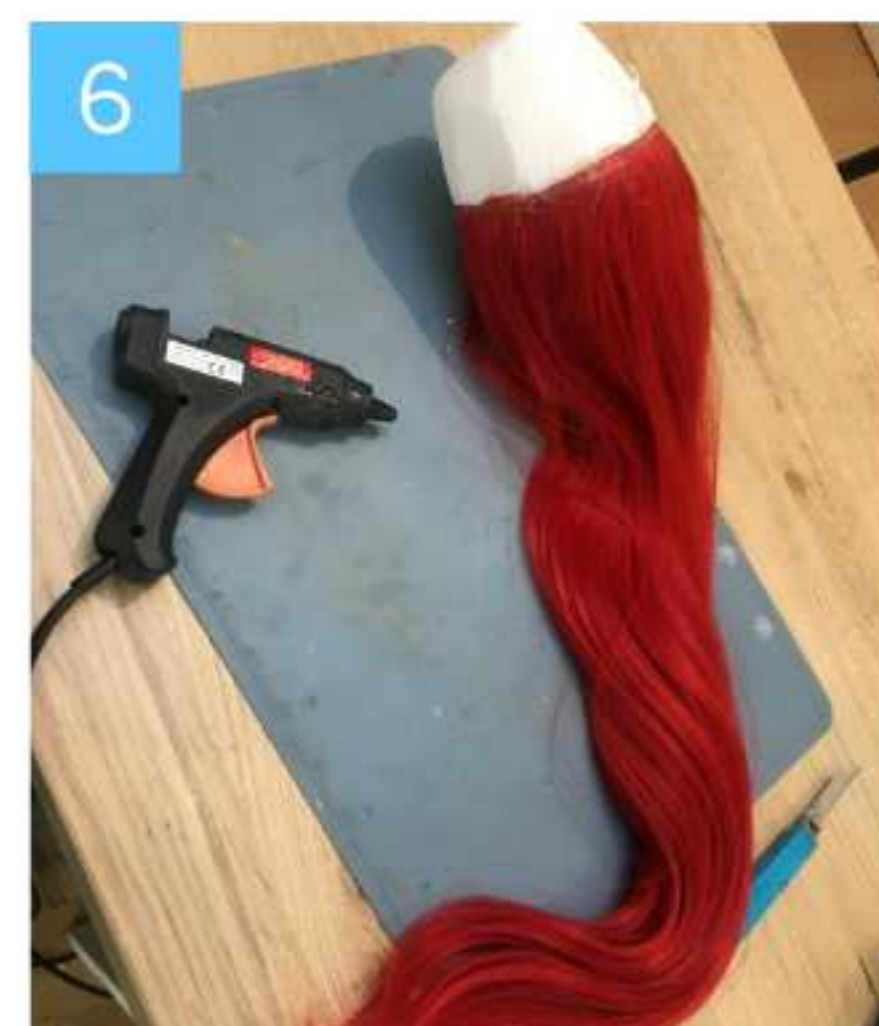
You are then going to take a hot glue gun and start gluing the hair onto the shape, starting from the center at the top.

Continue to wrap and glue each weft into place all the way to the end of the end of the shape

Now that you have the ponytail done you need to prep the base wig.

As I mentioned I'm using 2 long wigs so I need to cut the long wig short.

I chop off most of the hair and then thin out the ends using my thinning scissors.





8 Now that the base of the wig is ready we need to make the frame to keep the ponytail upright and in place. To do this I am using worbla scraps that I keep from other projects and a bolt or a nail.

Start by cutting up your worbla scraps, heating them with a heat gun and then creating an X shape with them.

You will then take the nail and again heat up some worbla and wrap it around the base, You can now press this onto the X and it will stick in place. Take the X shape while it is still warm and press it onto a wig head so it forms to the shape.



11 **Can I Use Something Other Than Worbla?**
If you can find another material to work with that suits your needs you can definitely use it! You can use hard plastics or metal as alternatives, but we really do prefer thermoplastics for this.

Now we need to put the wig over the frame, to do this you can cut a small hole in the back of the wig mesh and put it over the frame while it is on the wig head.

You should then have the spike sticking out the back of the wig.



12 You can now take the ponytail, fill up the channel you made in the polystyrene shape with hot glue and push it onto the spike.

let it cool down and set in place and your ponytail wig construction is now done!



13 The base is now constructed but we are only halfway there! We now need to finish the rest of the styling and get it looking really nice and pretty!

So the first thing we need to do to take the wig to the next level is to dramatically thin out the ponytail.

Go with my thinning scissors I cut into it and took off a lot of hair which will take off a lot of the weight but the ponytail will still appear very thick. Once you finish cutting you can then straighten the ends on the ponytail.



The next thing is to add even more body into the ponytail. To do this I teased the inner layers of hair, leaving the outer layers so that I can cover the inner teased bits later. Work your way from the bottom of the ponytail up to the top, brushing the hair backwards into the base creating lots of poof and volume.

When you reach the top of the ponytail you can now take your outer layer or hair and brush it over the teased bits hiding it. If the hair does not want to stay in place you can spray it with some hairspray and heat it up quickly with the hairdryer to keep the fibers exactly where you want them.



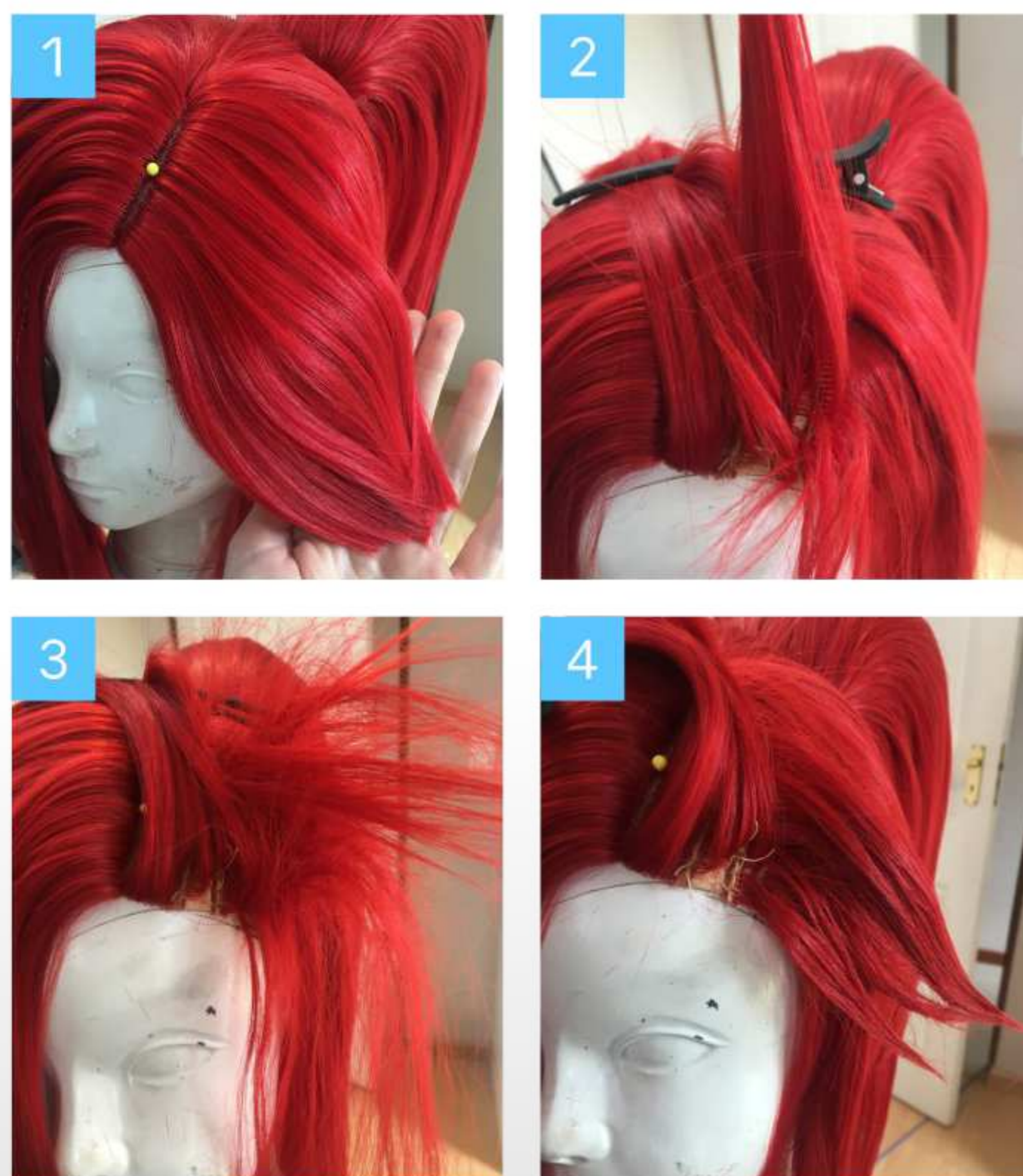
Now for the bangs! So the wig I'm using is a skin top wig and I'll be building my bangs around that parting.

To start the process I'm taking the bangs and cutting them to the length I want them.

Then I'm using my thinning scissors to create more layers in the fringe and thin out the ends

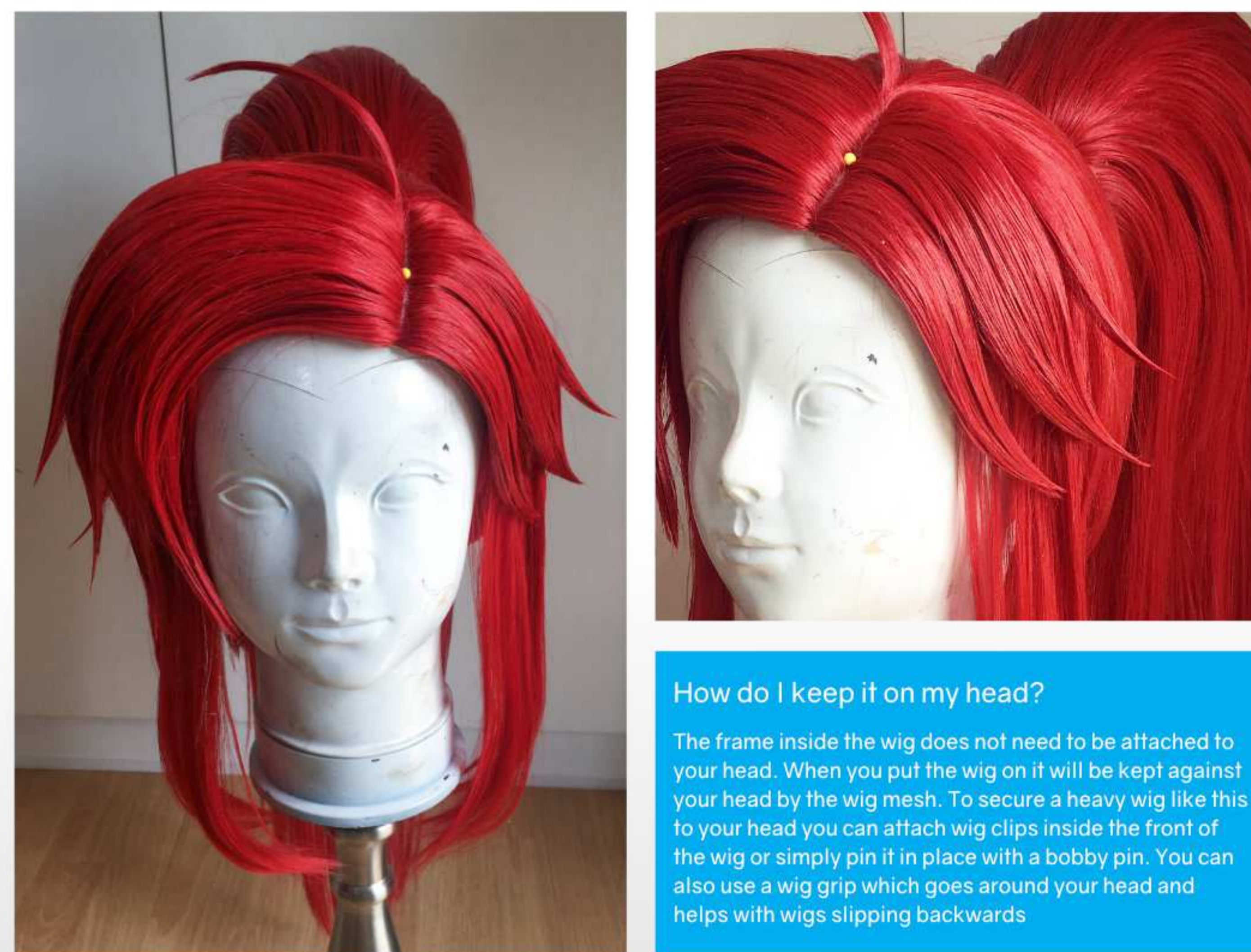
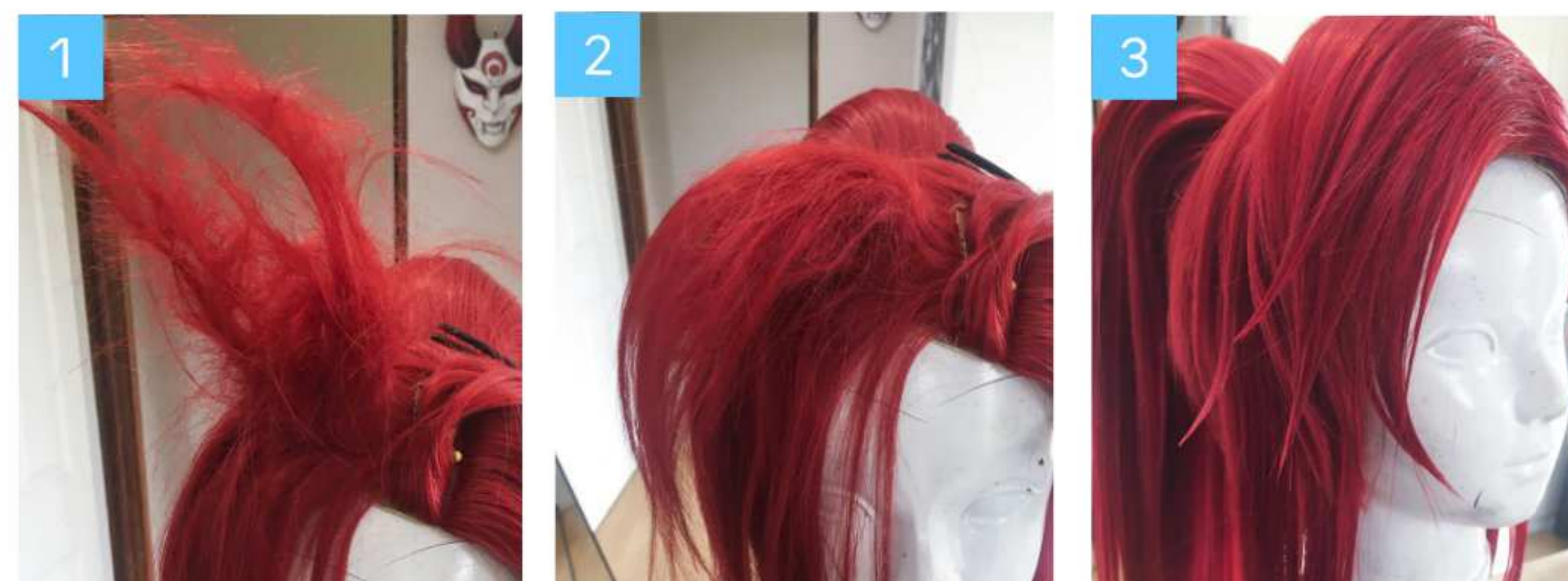
I can now take my comb and tease the inside layers of the fringe, leaving the outside layers to cover it later.

When I feel I have enough body and volume I start forming my spikes with some hairspray and my fingers.



Then I take the extra hair I left on the outside and smooth it over the spikes

This is an application of all the basics discussed earlier in the book, the Ahoge, cutting, teasing and spiking all in one go!



How do I keep it on my head?
The frame inside the wig does not need to be attached to your head. When you put the wig on it will be kept against your head by the wig mesh. To secure a heavy wig like this to your head you can attach wig clips inside the front of the wig or simply pin it in place with a bobby pin. You can also use a wig grip which goes around your head and helps with wigs slipping backwards



Mordred Wig

Lets quickly look at another example of a ponytail wig but this time using ponytail clips to create the ponytail.

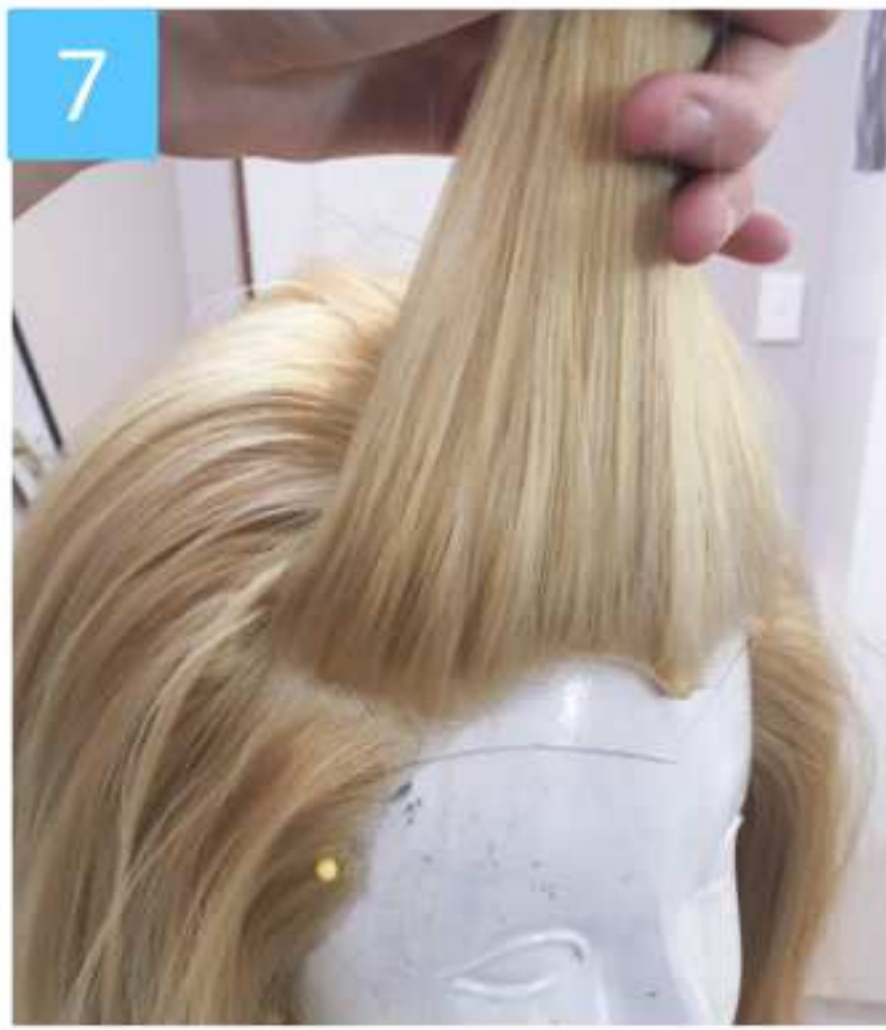
So for my Mordred wig I used a short lace front from Arda wigs as my base and also ordered 2 ponytail clips, one short and one medium. I also got 2 small braids for the sides as details to add on afterwards.

So when using ponytail wigs for your ponytail you need to remove the hair from the clip. To do this just open the clip, undo the knot and pull off the mesh from the clips.

For the frame and the base of the ponytail you will make it exactly like I showed in the Yoko wig section. With worbla and a nail, and some insulation foam for the shape.

Now instead of wrapping wefts around the foam shape like I showed previously, you just need to take your 2 ponytail clips and stretch them over the shape, gluing them into place a bit like a clam shell.

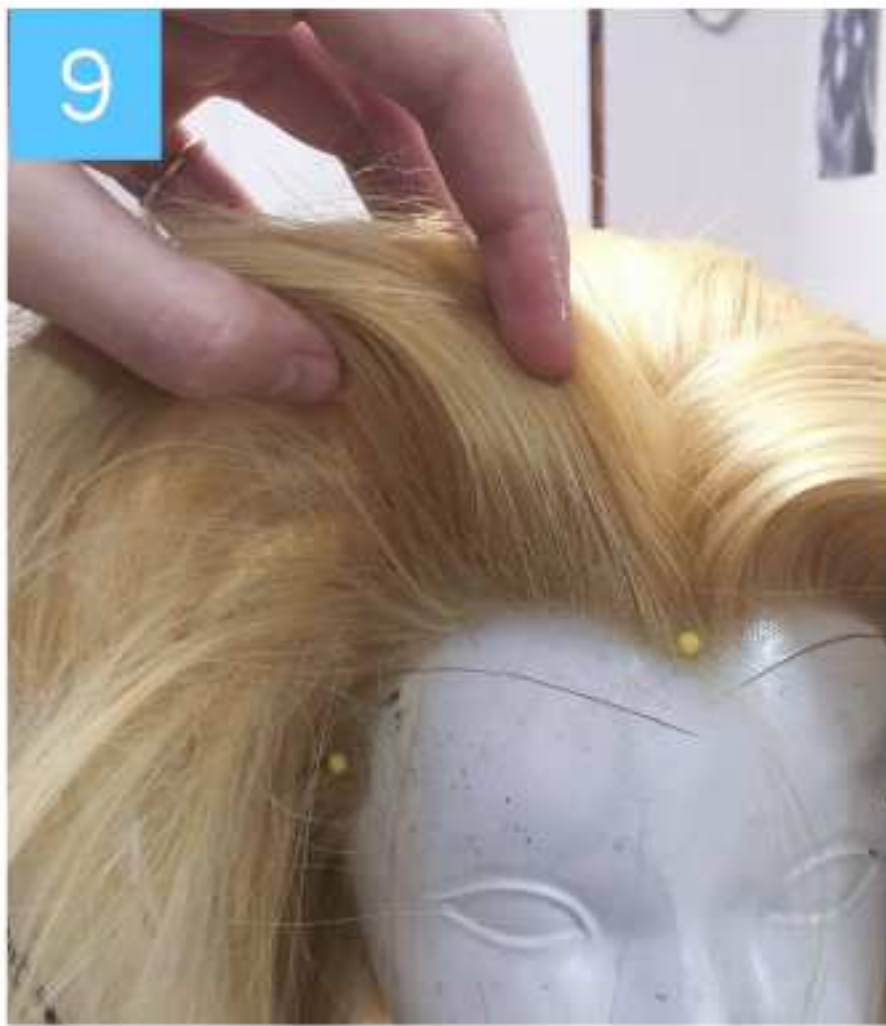




For the bangs on my wig I sectioned the front of the wig and brushed it forward.

I then sprayed the front of the bangs with hairspray and used my hairdryer to set the fringe straight up, giving me that anime look.

Now that I had the basic shape I cut and feathered my fringe to the right length and then used more hairspray to form the ends of the hair into points.



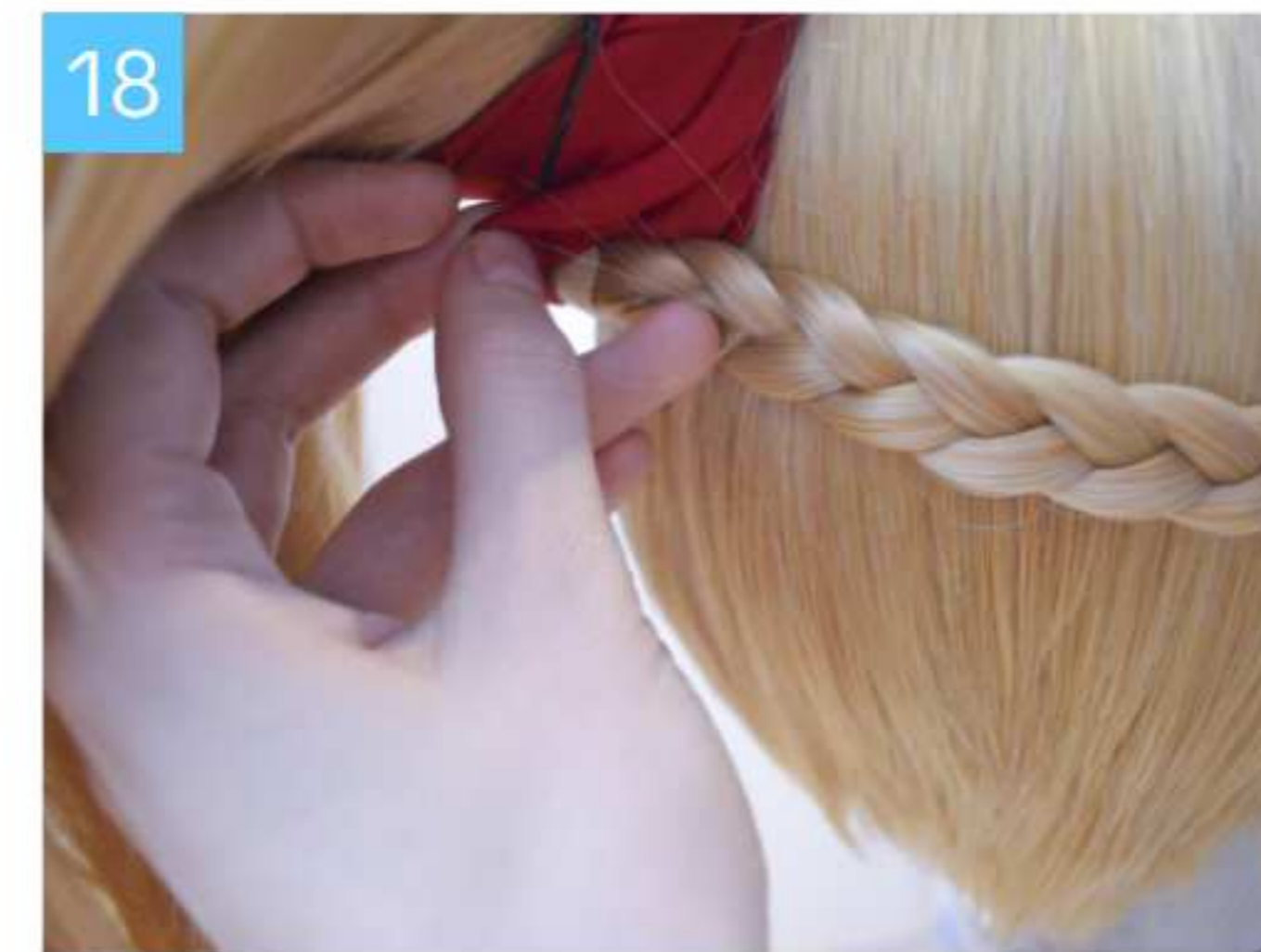
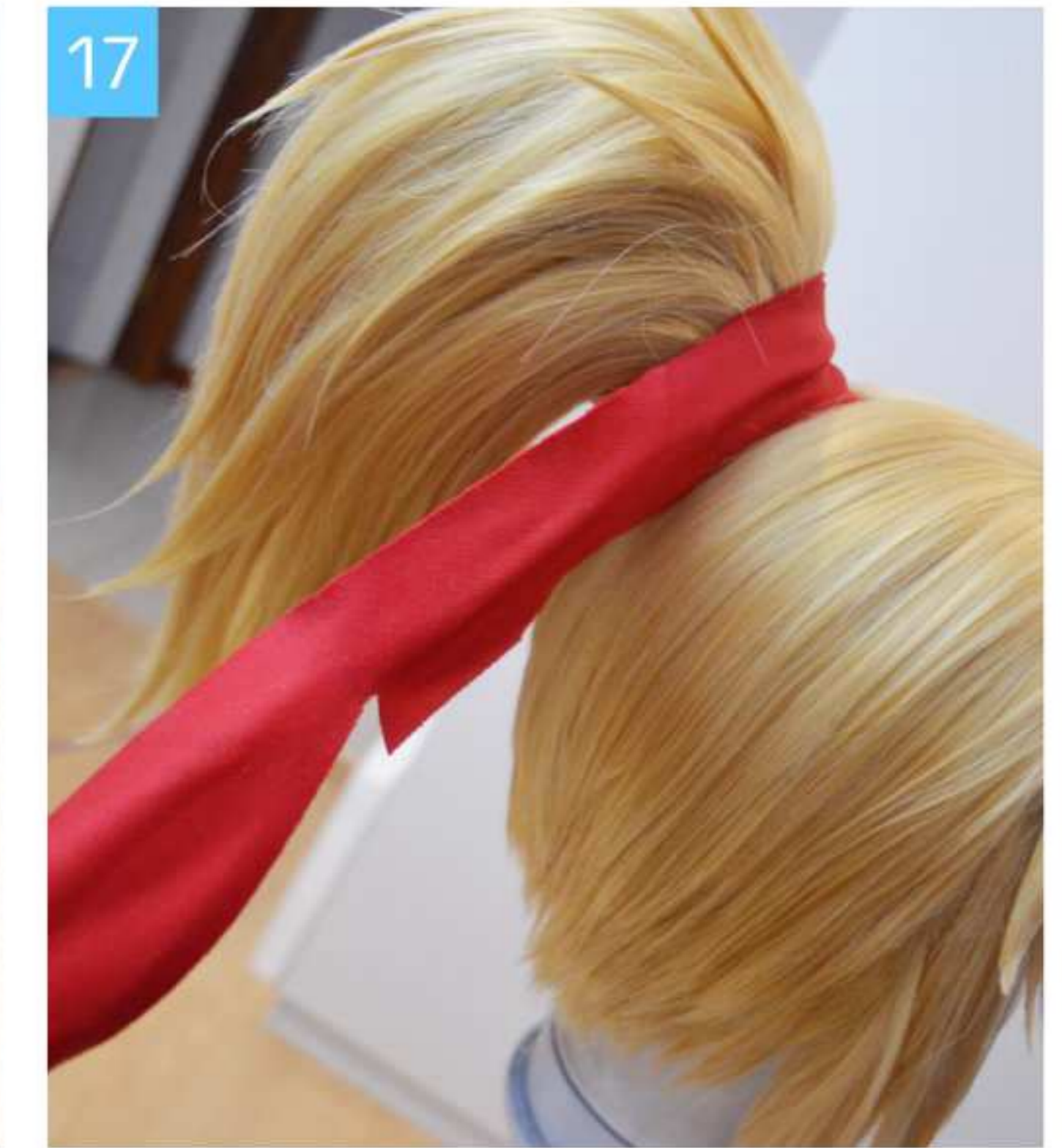
Then just like before I put my frame inside the wig with the point sticking out.

I then took my ponytail, put hot glue into the hole I made and pushed it over the nail at the back of the wig letting it cool into place.

Now I could thin out the ponytail and get it to the right length.

For some final details I spiked the back of my ponytail with hairspray, wrapped some red fabric around the base as a scrunchy.

Then I used my braids I bought earlier, tucking one end under the red fabric and securing the other to the front of the wig with a clip.





Tip:

To keep extremely long wigs from tangling too much spray silicone spray on them, it will keep them sleek and prevent knots from forming too easily.

Unusual Wigs

In unreal worlds hair does not always follow the laws of physics and there are some seriously weird and strange styles out there that don't make sense! I'm going to show you 2 examples of really strange wigs and how you can achieve these strange and unusual hairstyles!

Yodo

Yodo is a ninja from the Boruto universe. She has a really odd hairstyle with a giant fringe that swoops over your head and the rest that trails all the way down to her waist. This looks super cool in the anime but in real life it's difficult to try consolidate hair that is growing out in 2 different directions!

Wigs that go in an upwards direction are very tricky to get right. This is because most wigs are made with the wefts to lay downwards, that layer of hair then hides the weft underneath, so as soon as you change the direction on the hair all the wefts underneath become exposed. I will show you how to fix the exposed wefts on this wig and achieve this super big fringe!

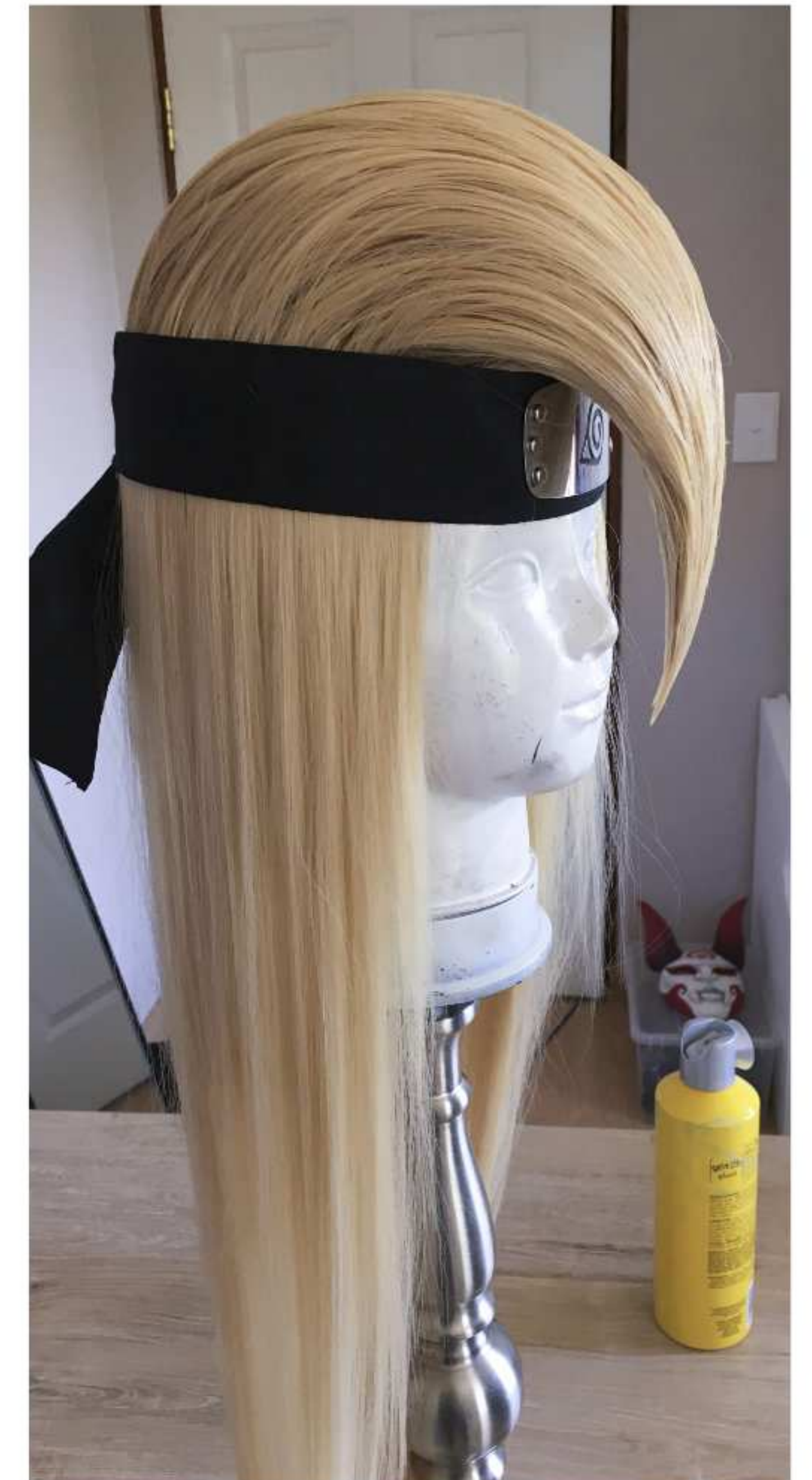
So first thing you need to do is pick out some wefts from the wig. You can just carefully snip out 3-4 wefts from the underside of the wig, just make sure you skip layers and don't take them all from 1 spot leaving that area bare.

These wefts are what we will use to cover the exposed mesh.

Once you have your wefts removed we can now start working on the big fringe section. It's gonna get a lot worse before

What you'll need

- Long Length Wig
- A Hairbrush
- Hairspray
- Silicone or Caulk
- A Naruto Headband
- Hot Glue and Glue Gun



it gets better! So this step just involves teasing the bangs to death, get as much shape and volume as you can from the inner pieces of hair.

Just as usual make sure you leave enough hair outside to hide the teased sections.

Once you have your hair teased you can now start to brush and work it into a shape, using hairspray and a hairdryer to help you sculpt and mold this weird fringe shape forward.

When you have that initial shape you can now work outwards, taking lathers of hair, lightly teasing them and laying them over the same shape until you extend to the outer layers.

You'll start to see at the back of the wig the wefts are all exposed, don't worry we will take care of this soon!



The wig I used for Yodo is super long. It would be a waste to just cut the wigs short and discard the hair so instead I'm using that cut off hair to create more wefts!

So make wefts from loose hair wrap your surface in some cling wrap.

You are then going to take a tube of silicone or caulk and put down a streak of this onto the surface. You can get this silicone from any hardware store its normally used to seal around things like sinks and bathtubs.

You are then going to take your hair and lay it onto the silicone and press it into place, then add another layer of silicone on top and rub it smooth. Let this cure completely!

Once this is cured you can peel it off your cling wrap, and cut it out and boom you have wefts! These can be sewn or glued into place on the wig.

So now that is exactly what we are going to do!

Take the wefts you made and the ones you took out the wig and start to lay them with the hair in an upwards direction



12 You can just hot glue them into place and then use your hair-spray, hair dyer and a comb to smooth the hair onto the hair shape you already made.

Do this with each layer of hair until the mesh is completely covered and the hair meets again. You can also add some wefts in a downward position if you need to add extra hair going towards the bottom.

Now thankfully Yodo has a headband to hide this weird seam that has formed, so once you are done take your headband and tie it around your wig and your hair looks flawless!



How do I put this on?
The same as any other wig! These kinds of wigs when styled correctly actually should not change shape much! If you put enough hairspray on when you pull this off the wig head it will keep its shape perfectly and you can just pop it onto your head.

Juri Han

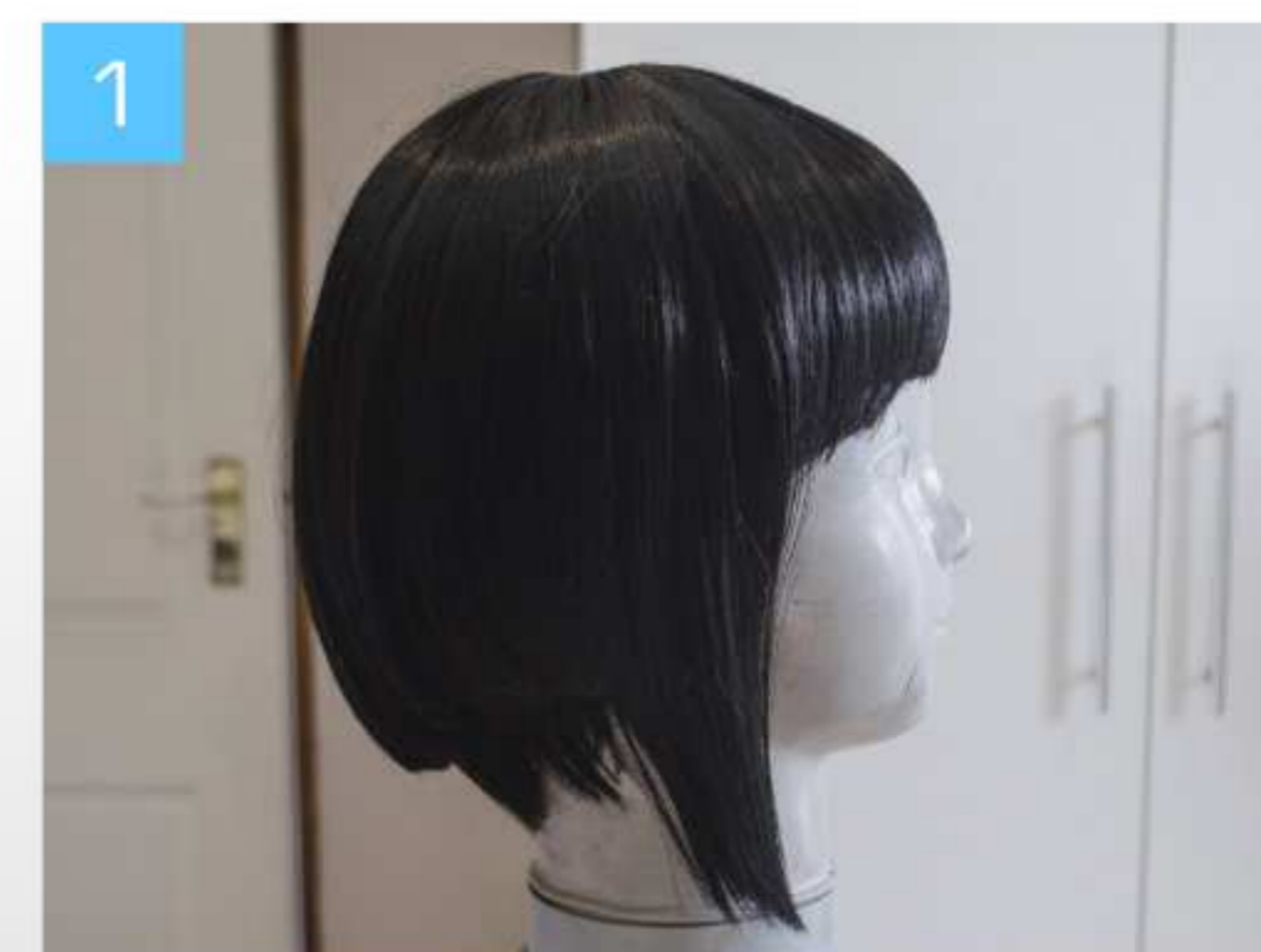
Juri is a character from the game street fighter! She's a little crazy and so is her hair! She's got 2 large cone shaped hair pieces that extend out to the sides. I'm going to show you how to secure these shapes to the wig and also how to create the shapes themselves with hair!

So to start I have removed my 2 pony-tails from the clips that they were on just like I did for my Mordred wig!

I also took my base wig which was a short black bob with ready cut bangs and cut the back shorter and thinned out the strands in the front to a point.

What you'll need

- Short Black Wig
- 2 Ponytail Clips
- Hairspray
- Insulation Foam Board
- Worbla Scraps
- 2 Nails or Bolts
- 2 mm EVA Foam
- Pink Spandex





3 Once the base wig is styled I then start to work on the hairpieces for juri.

I cut 2 bun shapes out of some insulation foam board and rounded them with my craft knife.

I then took some hot glue, the foam shape and my ponytail and wrapped and glued that ponytail around the shape.

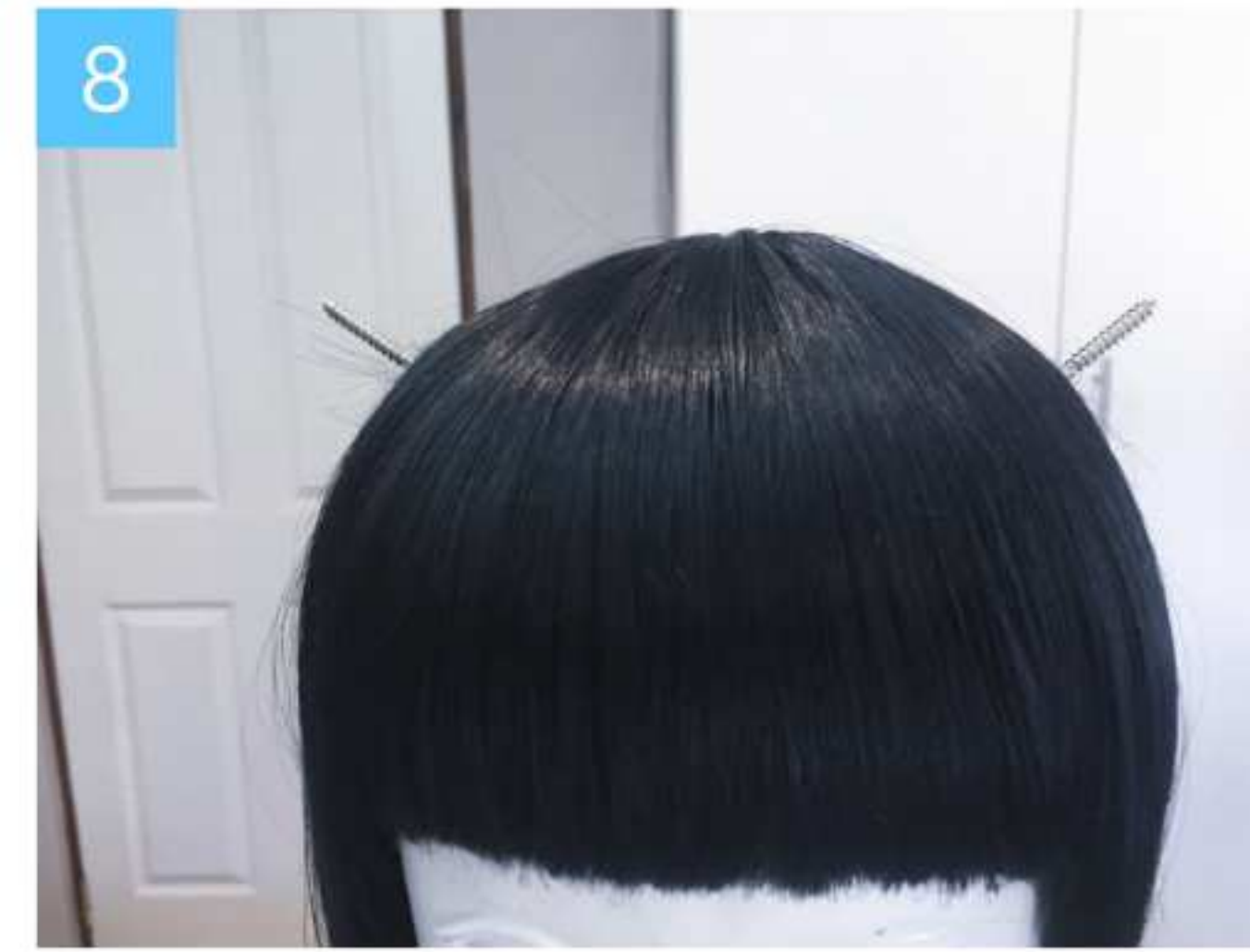
Just like I did with my ponytail wigs I built 2 small frames from worbla scraps and screws. I then poked them out through each side of my wig, put hot glue onto my foam shape and stuck them onto the nails.

At this point the wig looks like any other ponytail wig. So now we need to create those weird gravity defying points.

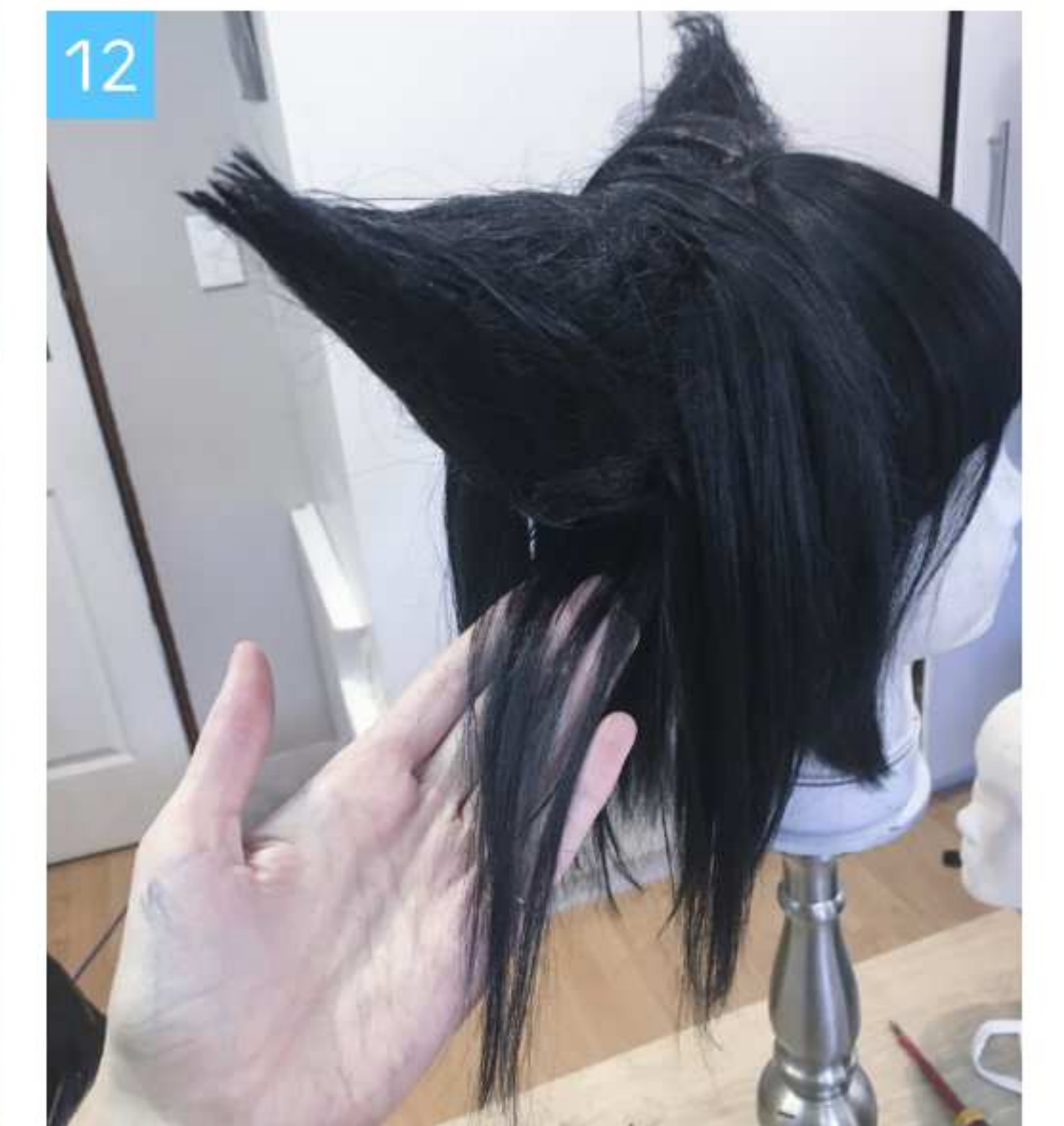
To do this I separate all the hair and take the middle pieces and tease them into a spike shape.

I then continue to tease the hair and glue it onto the initial teased spike with lots of hairspray and a hairdryer.

Work your way to the outer layers, teasing and combing the pieces over.



8 As you get to the outer layers simply start to brush them over with a comb and spray them into place with hairspray, if the pieces are too long trim the ends off once its stuck down. Now repeat for the other spike!



15



Once you have your spikes nice and shaped the pink details need to be added.

To make these I'm using 2mm EVA foam and some pink spandex. I cut the foam into 4 strips with a craft knife.

Then I cut out some strips of the pink spandex and started to glue my foam onto it.

Glue the foam on one edge, then roll it over on the fabric and glue it down again on the same side once the foam has been covered.

16



You can now cut your strips, wrap them around your hair piece and glue the ends of the strip together with more contact glue.

If your strips don't want to sit in place you can put a dot of hot glue on the inside at the back to keep them in place.

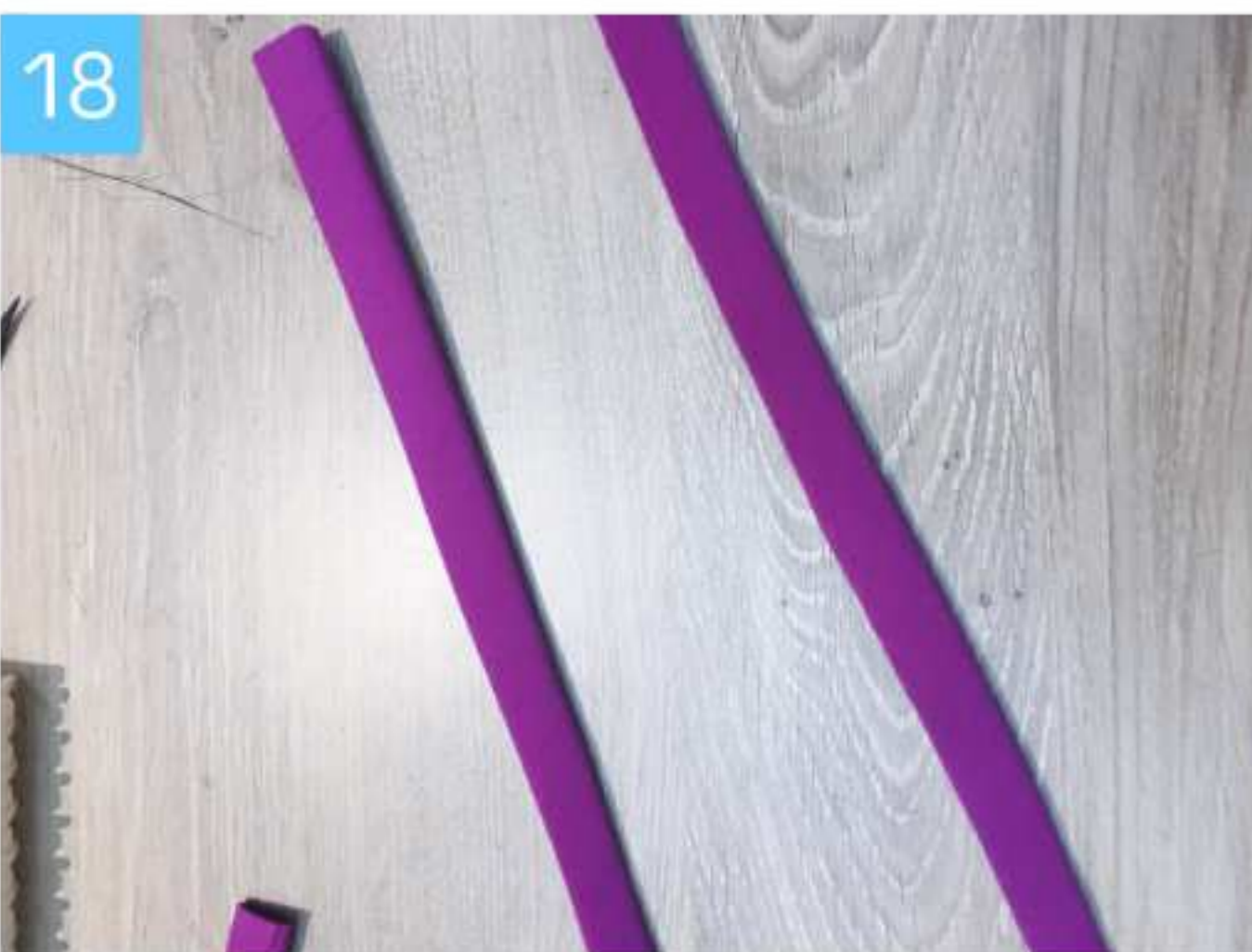
17



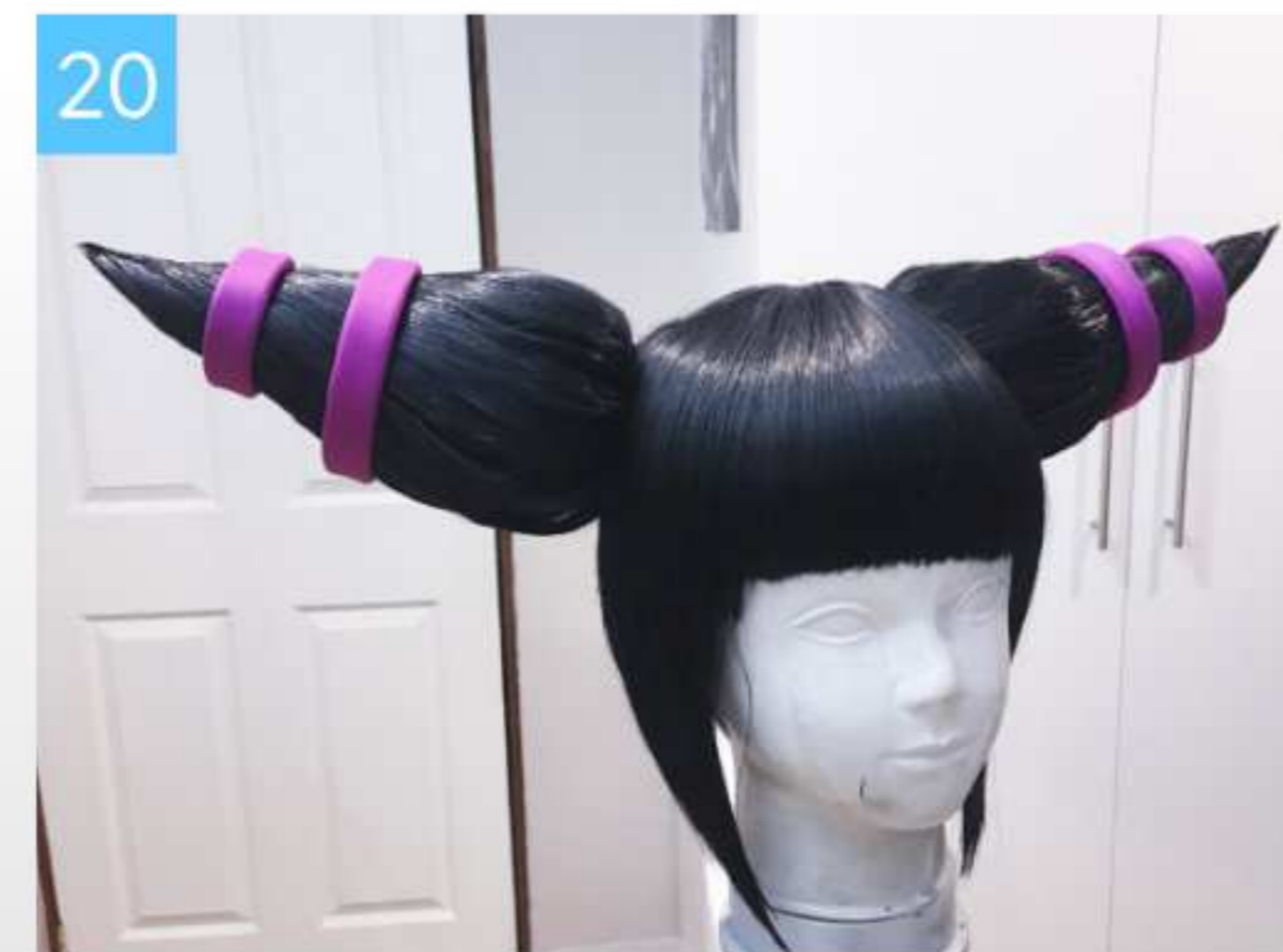
19



18



20



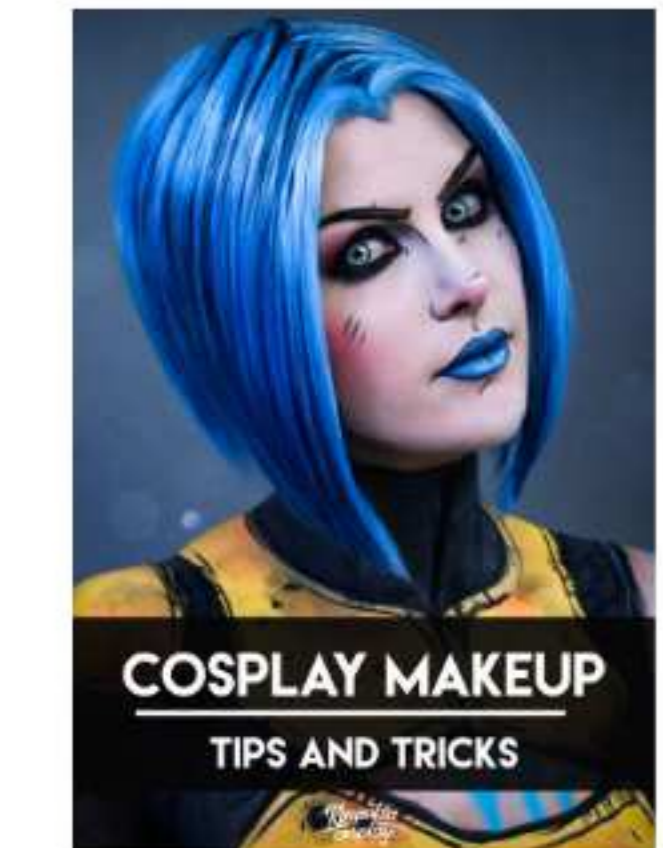
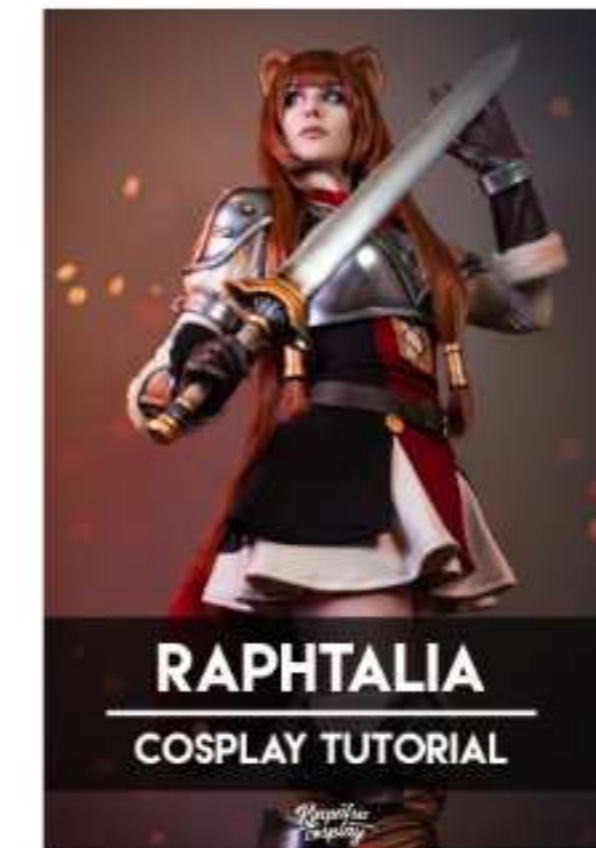
THANK YOU SO MUCH FOR YOUR SUPPORT!

We really hope that this book has helpful and insightful. If you would like to see more of our tutorials and patterns please check out our website KinpatsuCosplay.com

If you have any questions or just want to keep up to date with our projects you can find us here:

- facebook.com/KinpatsuCosplay
- instagram.com/KinpatsuCosplay
- youtube.com/c/KinpatsuCosplay
- twitter.com/KinpatsuCosplay

If you enjoyed this book you might also enjoy these! We have a wide range of other tutorial books to help with your cosplay and crafting.



Kinpatsu cosplay

These books are for personal use only and are not to be distributed in any manner. All rights reserved by Kinpatsu Cosplay unless otherwise stated.