



WIG STYLING 2

ADVANCED WIGS FOR COSPLAY

Introduction

Welcome to the second volume of wig styling for cosplay!



In this book we will be taking your wig styling to the next level and turning you into an advanced wig stycler!

In my first book "Wig styling for Cosplay" I focused mostly on beginner techniques and some basic styling tips in order to help anyone who wanted to start their wig journey with some general styling skills. Now in this second volume we will be kicking it up a notch, showing you how to create some truly crazy, colorful and gravity defying styles!

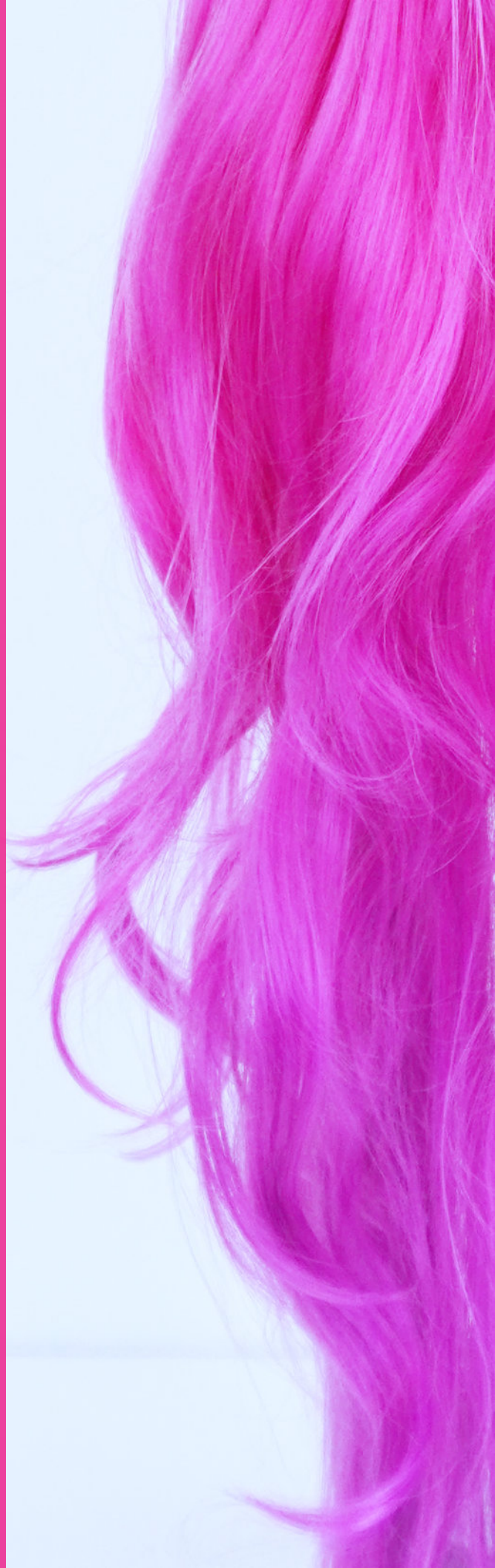
From dying, spiking and creating pulled back ponytails all the way to making your own lace front wigs and crazy volume for the most unrealistic hairstyles! This book is going to open up a whole world of possibilities and allow you to really turn heads with your next wigs!

I know wig styling can be intimidating but my hope is that after reading this book it will be a little bit less scary and you will be confident enough to take on some new projects and let your creativity and hairspray flow!

-Tayla Barter

Contents

Tools and Materials	4
Making a custom wig head	8
Wig Color theory	10
Wig Coloring & Dying	12
Creating Volume	22
Hand Tied Hairlines	27
Gravity Defying Spikes	30
Poofy Braids	32
Pulled Back Ponytails	38
Crazy Lace front Ponytail	44



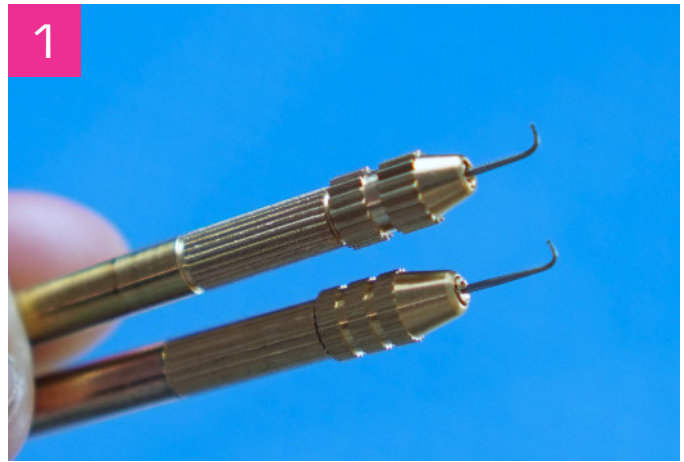


Tools & Materials

Here are some tools and materials you will be using when creating some of your next level wigs! If you work with wigs a lot these can be very helpful and make the process a little easier!

1. Ventilating needle

This strange looking miniature crochet hook is used to hand tie hair to lace and create your own lace front wigs with natural hairlines. It has a small barb on the end to help hook onto hair fibers so you can tie them into place.



2. Wig tripod

If ever you work with very long, very large or very strangely shaped wigs a wig tripod is a very helpful tool! You can set it up anywhere in your room and your wig will no longer be falling over on your table or getting in your way.



3. Steamer

This is probably one of the most valuable tools for advanced wig styling! A hand held steamer is like a hairdryer and straightener on steroids!

It can set, straighten and heat synthetic hair into shapes much faster than your other heat styling tools and is incredibly versatile.



4. Crimping Iron

These little wiggly irons are great for creating texture and volume in wigs. They are just like a textured flat iron and when brushed out the fibers of your wigs will be fluffy and voluminous!



5. Airbrush

Airbrushing isn't just for armor and costumes, It's for wigs too! Whether it's adding a gradient, a streak of color or even special patterns to a wig this tool is a very easy and effective way to add depth and interest to your wig.



6. Teasing Comb

If you have until this point only been using a standard brush and fine tooth comb to tease your wigs then put them aside and get yourself a teasing comb! The bristles on these combs making teasing and fluffing the hair a dream and are a must have for creating big teased styles.



7. Wig Grip

One of the questions I get asked the most about wigs is "How do you keep them on". This little tool is how! A wig grip is a small velvety band that straps around your head and by magic keeps the wig secure and in place! Even some of the heaviest wigs I have can be kept in place by this small band that distributes the weight.



8. Thinning Scissors

Thinning scissors are just like regular scissors with little gaps in one side of the blades. This allows the scissors to only cut some of the hair, leaving the rest in fact! This can be used to thin the ends of hair that are too bulky and create layers in the hair to help with teasing and texturing hair!





9

9. Structure + Framing Materials

Often times for large, gravity defying styles you may need to create support structures and frames to hold the weight and support the style that hair alone can't give!

Some materials that will help you create this structure are thermoplastic sheets, Aluminum wire, pvc pipe and insulation foam board.



10

10. Glue

You can't put glue on your real hair and we all know what happens when you use gorilla glue as hairspray! But you can put glue on your synthetic wigs.

Hot glue and Clear Adhesives are an essential part of advanced styling and can be used to secure pieces in place and create false hairlines.



11

11. Dying Tools

Not all wigs come in the color we want. So sometimes we have to dye them, but it's not like dyeing natural hair! You will need a dye pot, old spoon, old towels, a stove top and synthetic dye.



12

12. Hairspray & Gel

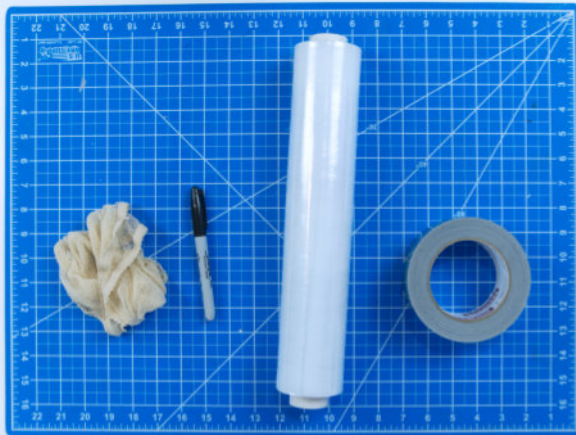
Last but not least! The bread and butter of styling is hairspray and gel! This will help lock in your styles so they keep their shape and don't move. My preferred brand of hairspray is got2b freezing spray and gel as they have a very strong hold and last while wearing your wigs.

Making a Custom Wig Head

Before we get to styling wigs I want to first show you how to create your own custom wig head. The standard polystyrene wig stands you can find at crafting stores are often too small and not really shaped like a real human head. This works fine for simple wigs that just need something to sit on while styling, but for more advanced wigs this won't do.

When styling pulled back wigs like ponytails or wigs with extreme shapes its important that your wig head is the correct size and shape. These wigs tend to be more like helmets by the end of the styling process and so if your wig base is too small or too big it will not fit. Here's how you can turn your tiny alien mannequin head into a perfectly fitting wig base to ensure your wigs sit perfectly every time!

1



To make a custom wig head you will need a wig cap to cover your hair, plastic wrap, tape, a pen and scissors. (See fig. 1)

Start by tying up your hair and putting your wig cap on as you would when wearing a wig. (See fig. 2)

2



3



Take the plastic wrap and wrap it around your head. Try get it around your ears and the back of the neckline too. (See fig. 3)

You can then tear off pieces of tape and lay them onto the plastic. Try make this fit snugly but not too tight. Go all the way down the back of your neck and around your ears. (See fig. 4)



Next take a pen and draw the center line for your head. Trace around your hairline and around your ears. (See fig. 5)

You can now pop this tape form off your head and you will have a “mold” of your head that is the correct shape and size and has the markers for your hairline and ears! (See fig. 6)



Get your original mannequin head you will be altering. Here you can see mine is quite small and alien shaped. Not like a real head at all. (See fig. 7)

Use batting or stuffing to tape to the mannequin head to fill the extra space. (See fig. 8)



Then take your tape mold and place it over the batting and tape it securely to your mannequin. (See fig. 9)

Now you have a wig head that will fit your own head's dimensions perfectly! (See fig. 10-11)





Wig Color Theory !

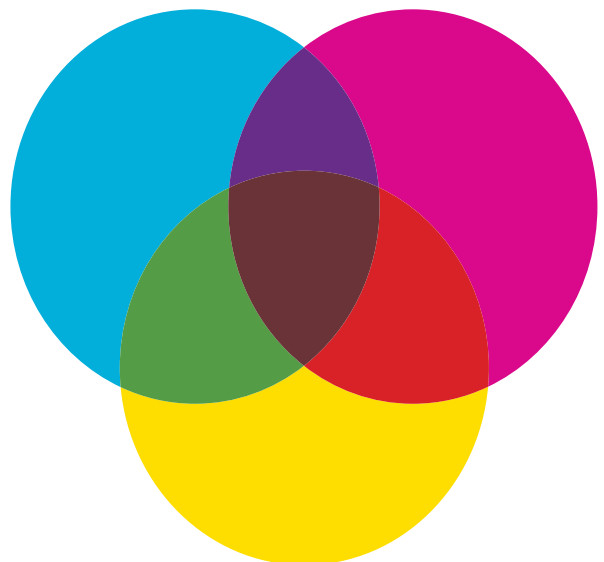
Sometimes wigs just don't come in the colors we need or need to be altered in order to have a special multicolored effect. But before we get started on exactly how to color wigs let's go over some wig color changing theory and how changing the color of wigs works and what is achievable.

What base color should my wig be?

With wig dyeing you will always be adding color and pigment to your wig. As a rule of thumb you should always expect to dye your wigs darker than their original color. So if you want a very light or vibrant color choose a white wig as your base.

You can also alter the color of wigs to similar colors. This means you could dye a pink base wig purple or a yellow base wig green. To understand this color theory here is a color wheel to demonstrate what similar colors would be. (See fig. 1) If your base wigs are your primary colors you can create secondary colors on either side of this color by adding dye to them. But you cannot go back to a primary color like yellow, blue or red by adding dye!

1



Can I change a colored wig to a different color?

You won't be able to completely shift the color of your wig to a different color. For example you cannot dye a bright pink wig yellow or a red wig green. If you were to dip a red wig in a pot of green dye it would just go brown! Consult your color wheel again and make sure you are using a wig of similar color to your final desired color.

If you need to create an ombre style for your wig where the color at the bottom is similar to your base color (pink with purple tips) this will work fine. (See fig. 2)

But if you have a wig that needs to be dyed 2 completely different colors (pink with green tips) you will want to start with a white base for each of the colors to look vibrant. (See fig. 3)



Can I make a wig lighter?

Unfortunately unlike natural hair you cannot bleach wigs and make them lighter. The one option to lighten a wig is with air-brushing and paint. You can paint your wig fibers to be lighter but this is only recommended in small sections. But that's a technique for another book!

Another alternative to alter a dark wig and add color to it is to add in a streak of color using extra wefts. So for example adding blonde streaks to a black base wig with additional hair instead of dye. (See fig. 5-7)





Wig Coloring & Dying Methods

Now that we have covered the basics of wig color changing lets get to how to actually dye your wigs! This section will show you for different methods for how to dye and alter the color of your wigs as well as some of pros and cons of each of these methods!



Hair Chalk

Hair chalk is a super easy, quick and affordable way to add a little color to your wigs. This method is great for adding small areas of color on a wig like streaks or a gradient.

This method is a temporary solution as the chalk can wash out. In some cases this is good because it means you can alter a wig without changing it forever. The chalk can sometimes rub onto clothing but this can easily wash out as well.



Permanent Markers

Another quick, easy way to alter and add color to smaller sections of your wigs. Alcohol based markers, such as sharpies and Copic's, are more permanent way to color wig fibers and won't wash out like the chalk.

Alcohol markers will stain plastic and synthetic material which is why they are great to use on wigs. However alcohol based markers can rub off when alcohol products like some hairsprays are used.



Synthetic Dye

If you are looking to alter the color for larger sections of your wig then dyeing your wig with synthetic dye is a great option. It is permanent and can achieve a great even color. Be sure to choose a dye made for synthetic materials and not natural materials. Your wig will need to be heat resistant as it will be placed in boiling water. This method does require more time and tools but the results are worth the extra effort!



Airbrushing

The final method for coloring wigs is airbrushing. This method is very versatile and can create small areas of color change, beautiful smooth gradients and shadows or even patterns on your wigs.

Hair Chalk

Most hair chalk is water activated, so to use the chalk you can either dip it in some water or lightly wet the hair. (See fig. 1)

(See fig. 1)

Then take the chalk and run it over the strands of hair you want to add color to. (See fig. 2)

To blend the color you can then use a brush to comb through it and distribute it into the wig fibers. (See fig. 3)

Continue to add color to your wig with the chalk until you are happy with the results. (See fig. 4)

Let it dry and your color is done! (See fig. 5)



Permanent Markers

They can be used to add streaks of color, create an ombre effect or darken the roots of a wig. Alcohol markers will stain plastic and synthetic material which is why they are great to use on wigs.



To color a wig with markers start by drawing onto the wig fibers with the pen. (See fig. 1)

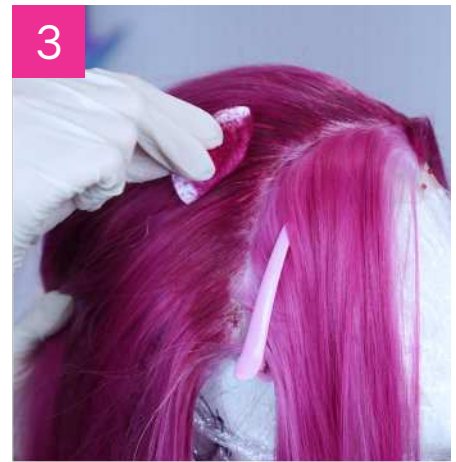
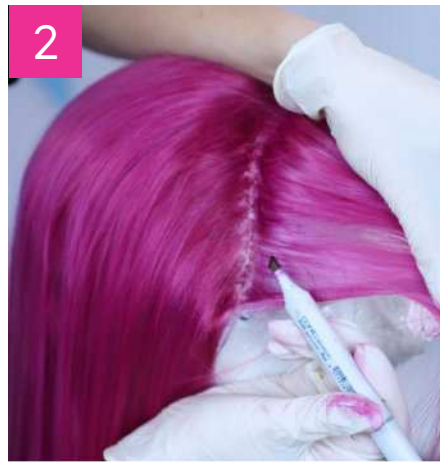
You can then use a q tip and alcohol to help spread the color if necessary. (See fig. 2)

Brush through the wig fibers to help spread the rest of the ink. Then you can move to the next layer and repeat (See fig. 4-5)

Work in small sections at a time to get an even color.

Rinse off the wig with water to remove any excess ink

Now your fibers are dyed.



Will the ink rub off?

Alcohol based markers should not rub or transfer ink if the excess ink is washed out. But if you are using any alcohol based styling products like hairspray take care as the alcohol can activate the ink and this may cause it to run or transfer



Synthetic Dye

In order to dye your wig you will need a pot for your dye. This pot should not be used for food and should only be used for dyeing wigs and fabric.

You will also need a spoon to move the wig around, old towels to help prevent mess and dry the wig with, a stove top to boil the water on and gloves so you don't dye your hands. (See fig. 1)

You will then of course also need your synthetic dye. For this wig I'm using Rit Dyemore Dye in blue and purple. (See fig. 2)

Fill your pot with enough water to cover your wig then bring it to a boil. (See fig. 3)

Now you can add your dye. There is not specific amount you need to add. Just know the more color you add the stronger it will be. (See fig. 4)

To test your color cut off small pieces of the wig from a hidden spot and dip them into the dye solutions. Time how long the hair is in the pot. (See fig. 5-7)

If you are not happy with the color you can either add more dye to make it stronger or leave the hair in for longer. If the dye is too strong add more water or leave the hair in for a shorter time.

When you are happy with your tests you can move onto your final wig (See fig. 8)





Crafting Note:

If your water is not hot enough the dye will not sink into the fibers so make sure you keep the temperature up and simmering.

Rinse your wig in water so it is damp. Then you can place the wig into the pot. (See fig. 9)

Move the wig around gently with your spoon so the color distributes evenly. (See fig. 10)

When the hair is the color you want you can remove it from the pot and place it on your towels. (See fig. 11)

Wash off the excess dye from the wig in a stainless steel sink until the water runs clear.

Let your wig air dry or dry it off with a hairdryer. After dyeing your wig fibers the hair might be very frizzy. Don't worry! This is just from the heat. (See fig. 12)

Using a hairdryer and straightening iron will smooth them out. (See fig. 13)

Now your wig is dyed!



Gradient Dye

Now that you know how to dye a solid color wig let's move to the next level of dyeing a gradient!

To achieve this follows the same basic steps of dyeing a solid wig. Wet your base wig then get your dye pot ready by boiling the water and adding your dye. For this wig I'm using a pink wig with purple dye for the ends.

(See fig. 1)

Start with your dye solution a bit weaker at first, you can always add more dye but you can't remove it if it's too dark.

Slowly lower your wig ends into the pot of dye, up to where your gradient will start, then lift the wig back out and repeat. (See fig. 2)

You will need to wiggle and lift the wig to move the fibers around. Moving the fibers up and down in the dye while wiggling them will help you avoid getting a solid line of color and give you a nice gradient. (See fig. 3)

Leave the ends of the wig in the dye longer for them to get darker and more saturated. The lower down the wig you go the longer they will need to be in the dye. (See fig. 4)

When you are happy with the color you can remove it from the pot, wash off the excess dye and dry your fibers again



2 Tone Dye

So we have covered basic dyeing and gradient dyeing. But what if you need a wig that is 2 completely different colors? Here's how to dye a wig with 2 colors that don't mix well.

Get all your dyeing tools ready. For this I'm using a pink dye for the top and a green and yellow dye for the bottom of the wig. (See fig. 1)

You will need to start with a white wig base so both colors stay vibrant.

Once again wet your wig and get your pot of dye set up for your first color. In this case I'm using a pink dye for the top of the wig.

Section or mark off on the wig where you need the color to stop. Here I'm using a hair tie to indicate how low down the dye needs to to. (See fig. 2)

You can then put your wig into the dye pot and let it sit until the color has taken. Keep the rest of the hair out of the dye so it stays white. Try to move it around a bit so the dye distributes evenly (See fig. 3-5)

You can then rinse off your wig and rinse out your pot. (See fig. 6-7)

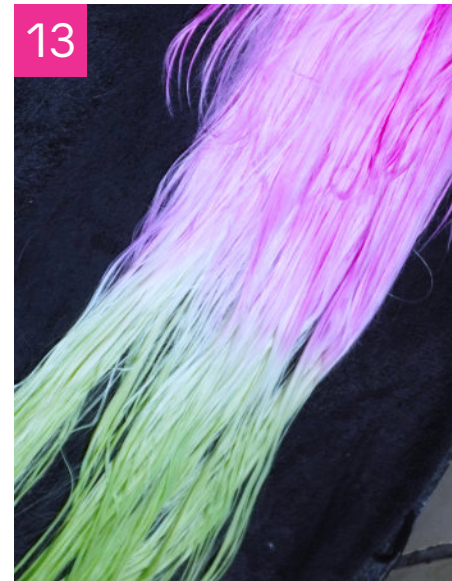
Refill the pot and add your next color of dye. (See fig. 8)





Then dip the rest of the white sections of your wig into the pot and let them dye. For this wig I overlapped the colors JUST slightly to get a gradient effect. (See fig. 9-12)

Remove the wig and wash off the dye. Then you can dry your wig for the final result. (See fig. 13)



Airbrushing

The final method for coloring wigs is airbrushing. This method is very versatile and can create small areas of color change, beautiful smooth gradients and shadows or even patterns on your wigs.

You will need an airbrushing gun, a compressor for the air and airbrushing paints.

I use an Iwata revolution HP-CR airbrush with a 0.5 nozzle and the compressor I have is a Timbertech AS-186 (See fig. 1-2)

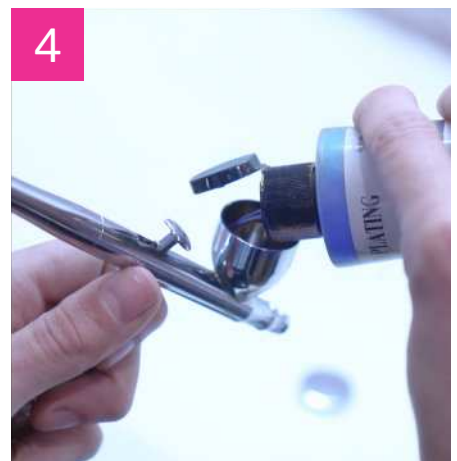
For airbrushing paints I like to use Createx paint but you can even water down acrylic paint and airbrush this onto your wig. (See fig. 3)

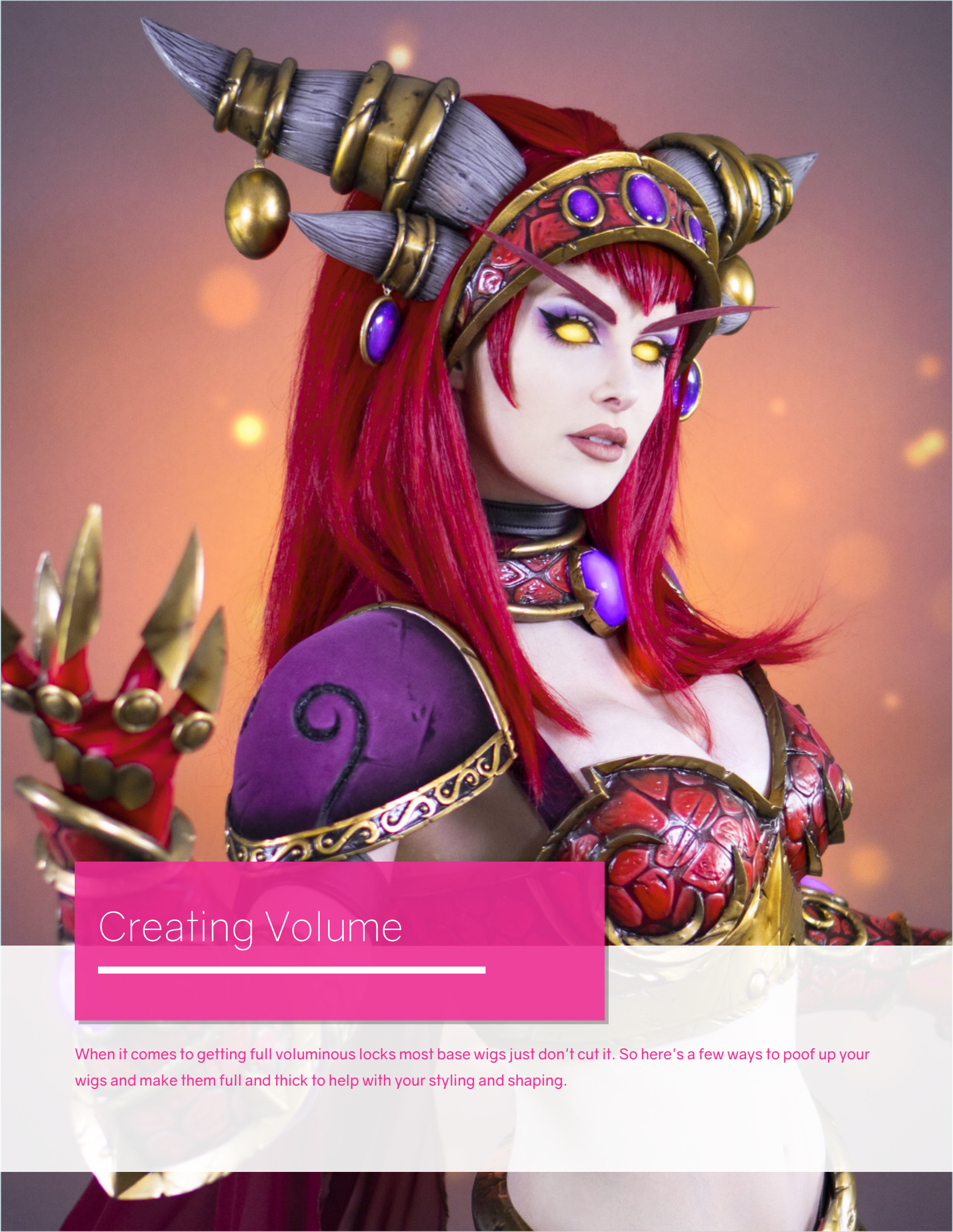
If your paint is not alcohol based it may wash off with water

To airbrush your wig start by mixing your paint and pouring it into the airbrush. (See fig. 4)

Then lightly spray onto the wig where you want to paint to be. (See fig. 5-6)

This is a wonderful way to add shadows to your wigs and make them pop more.





Creating Volume

When it comes to getting full voluminous locks most base wigs just don't cut it. So here's a few ways to poof up your wigs and make them full and thick to help with your styling and shaping.

Heat Teasing



For absolutely massive volume which is great for creating hair shapes heat teasing is the way to go!

Separate the layers, then using a flat iron or hair dryer, heat up your wig fibers at the roots. (See fig. 1 - 2)



Then while the hair is still warm, use your teasing brush to tease the hair and back comb it towards the roots. (See fig. 3)

Combing the hair in the opposite direction will gather the hair towards the roots and make a giant fluffy mess! (See fig. 4)



You can heat the fibers again if necessary with a hairdryer, then let everything cool down. This will lock in the frizzy texture you will need.

Once it cools, you can then brush it all out! Yes. You read that correctly. Brush out the mess you just made! Don't worry about the fibers being frizzy this is what you want! (See fig. 5)



You want to remove any knots so you can brush through your hair. But the wig fibers should be frizzy and fluffy creating huge volume! (See fig. 6)

Repeat this process on the whole wig. Going up in layers, teasing and brushing it out again. (See fig. 7-8)

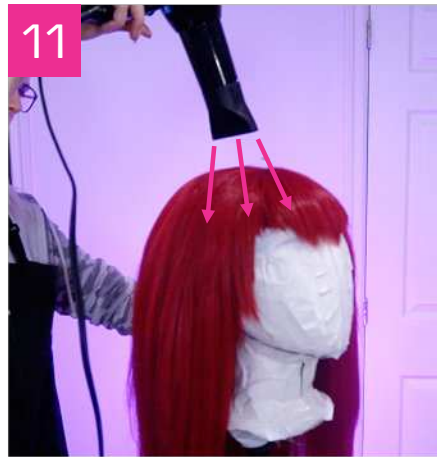
When you are done you should have a huge fluffy voluminous wig! (See fig. 9-10)

To help smooth out the outer layer you can lightly heat up the outer section with a straightener or hairdryer and comb it smooth. (See fig. 11-12)

Just don't use too much heat as you don't want to lose your volume.

Now the wig is twice the size it was!

This method is a fantastic base for creating crazy spikes and shapes for wigs!



Crimping

Using a crimping iron to get more volume in hair is one of the easiest methods!

It's especially great for wigs that still need to be long and flowy.

A crimping iron is like a flat iron but with little zigzag plates. When you close it over the wig it makes a fine crimped texture. (See fig. 1)

Lift the layers of your wig. Leave a single layer of hair on the underside to help hide the crimped texture.

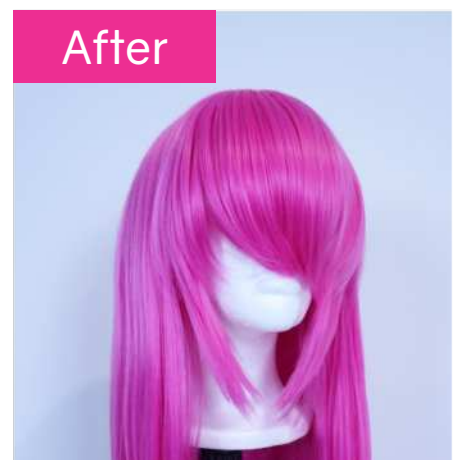
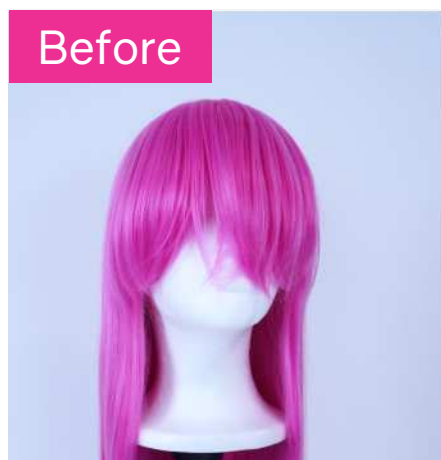
Then start to crimp your wig. Press the crimping iron down for a few seconds to embed the texture in the hair. Then release it and move down the wig, Pressing and releasing each time until the whole length of hair is crimped. (See fig. 2-3)

After crimping brush the hair out and it will become fluffy and frizzy. (See fig. 4)

Then move to the next layer of hair and repeat. (See fig. 5)

When you get to the outer layer of hair leave it smooth. This will once again help hide the crimped texture inside. (See fig. 6)

Now your wig will be fuller and thicker!





Batting

Sometimes hair just isn't enough and no matter how much we fluff it it's just not full enough. To help add more volume to a wig you can use batting inside it. (See fig. 1)

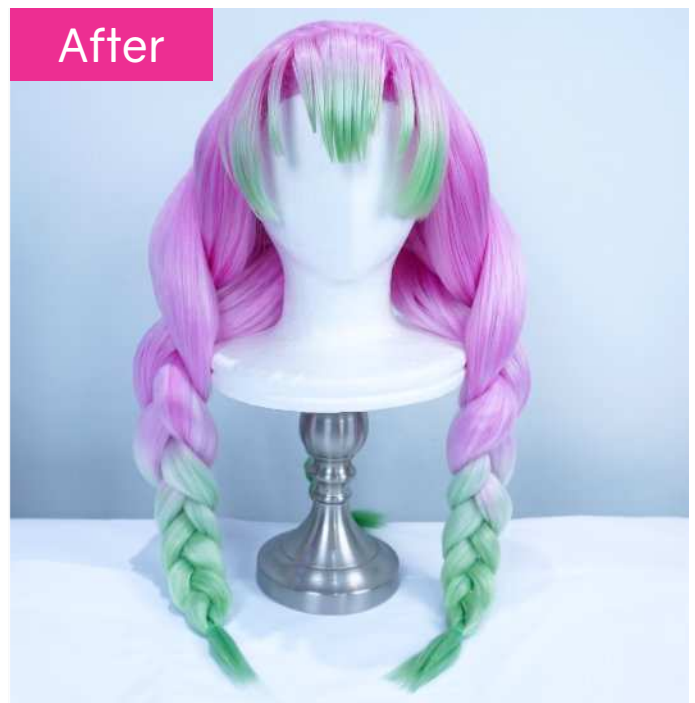
The texture of batting allows your wig fibers to cling to it, and it can also be dyed any color. (See fig. 2)



Batting can be used as a buffer between foam and hair to create a softer appearance and allow the hair to stick to it better.

You can also place batting inside your wig fibers to create full thick ponytails or braids. (See fig. 3)

I hid pieces of batting inside piece of hair to create these full thick braids. (See fig. 4)



Hand Tied Hairline

Hand tied hairlines or lace hair lines have a really natural appearance and give the closest look to real hair.

To make your own hand tied hairline its exactly as the name implies : You have to hand tie hair to a piece of lace, strand by strand.

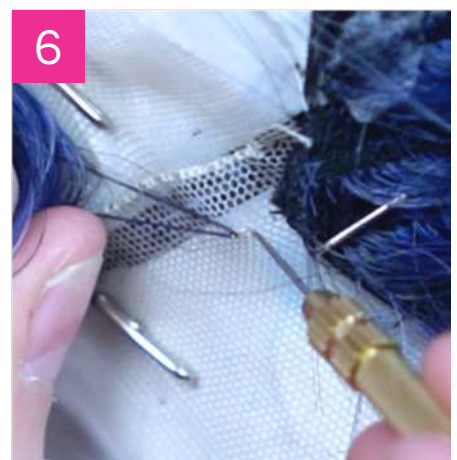
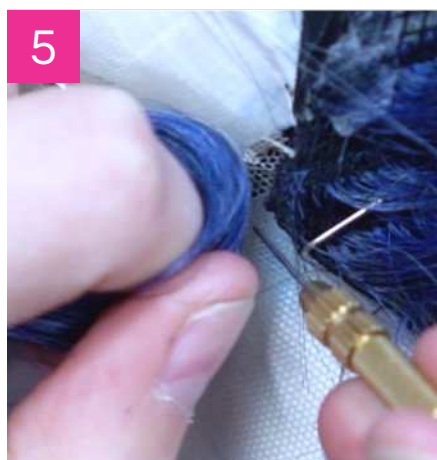
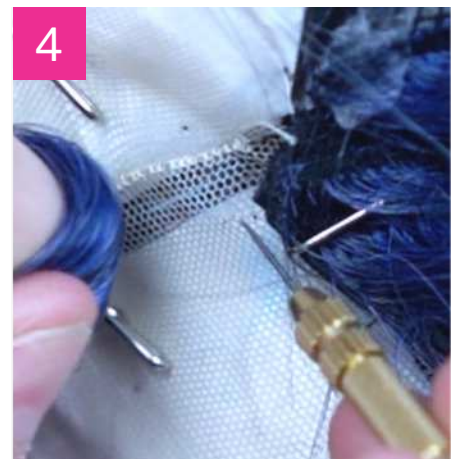
To hand tie hair to the lace you will need ventilating needles. These are like tiny crochet hooks which can be used to pull hair through the lace and tie them. (See fig. 1)

You will also need strips of hair to use to pull hair from. (See fig. 2)

Take your hair and bend it in the center, hold this in one hand with the bend by your needle. (See fig. 3)

Poke the needle through a hole in your lace. (See fig. 4)

Hook a few strands of hair with the needle. (See fig. 5-6)



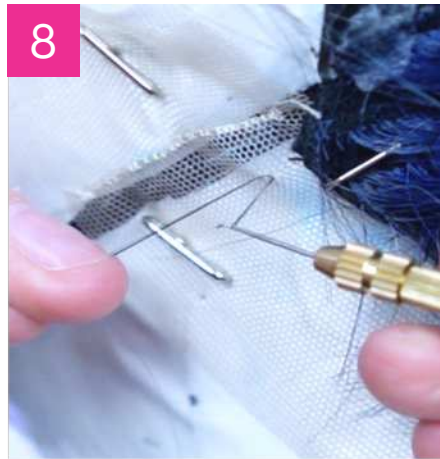
Then pull them back through the hole in the lace. (See fig. 7-8)

Once you have gone through the lace and the hair is on the other side, push your needle forward so it releases the hair and slides it to the back of the needle. (See fig. 9)

Use the needle to hook and wrap around the strands of hair which are still on the other side of the mesh. (See fig. 10-11)

Then pull these through your hair which was looped around the back of the needle. (See fig. 12-14)

Pull the hair all the way through and it will form a knot. (See fig. 15)



This movement can be a little tricky and difficult to get used to. It took me a while before I got the hang of it. But once you get going it isn't so bad. It is just time consuming. Continue this process and pull and tie the hair onto the lace. (See fig. 16-17)

This process is incredibly time consuming. But it can give you amazing realistic results and can also save you a lot on buying lacefront wigs if you can make your own!

With this method you can transform any wig into a beautiful natural lace front. Even cheap wigs from amazon and ebay.



Gravity Defying Spikes

To prep your wig for spiking you want to heat tease it! Just like I showed you in the last section heat teasing creates a super fluffy base which can be used to create some amazing shapes. (See fig. 1)

But once the hair is a giant fluffy ball what do you do with it?

Start by lightly combing the outer layer with a hairdryer or straightener. You want to slightly smooth out the surface without losing too much fluff! (See fig. 2)

Now you can start to position and create your spikes by gathering the hair with your fingers. (See fig. 3)

Trim the ends of the spikes thinner using scissors or thinning scissors. (See fig. 4)





For gravity defying spikes you can use a brush to tease and back comb the hair. (See fig. 5)

Then position the hair into a spike and lightly brush over the outer layers to help smooth it. (See fig. 6)

Set this with hairspray and a hairdryer. (See fig. 7-8)

Then brush over the neater outer layers of hair with a comb. (See fig. 9)



And set these with more hairspray (See fig. 10)

Repeat this for the rest of your wig. Work in layers from the bottom up. (See fig. 11-12)



Poofy Braids

Mitsuri Kanroji - Demon Slayer

This section of the book will show you how to create the Mitsuri wig from demon slayer! This multicolored hairstyle is like a fluffy cotton candy dream and this tutorial will show you how to achieve this! This wig includes a bunch of fun techniques and tips including how to combine 2 wigs together, creating volume for chunky thick braids using the crimping and batting method and how to style her poofy bangs!

Mitsuri has really thick voluminous hair so to help get this effect you can combine 2 wigs together. (See fig. 1)

We used a white Matilda as the base wig and a white venus as our second wig from arda wigs. (See fig. 2)

Remove all the wefts from your second wig by cutting them out. (See fig. 3)

Then take your base wig and section off the front of the hair you want to make into your bangs.

The parting on the wig doesn't look very natural here. (See fig. 5)

To fix this, take the strip of wefts and pin and sew it along where your parting will be with the hair facing the opposite direction of the final parting. (See fig. 6)

Once the weft is sewn into place you can then take a hairdryer and blow dry the weft in the correct direction.

This will hide the mesh of the weft and give you a much nicer looking parting along the bangs. (See fig. 7-8)

Now you can add the rest of the wefts into the wig by stitching them or gluing





them into place in layers. (See fig. 9)

When you are done you should have a nice full thick wig.

The next step is dyeing the wig the right color. I used RIT synthetic dye in pink, green and yellow to achieve this! (See fig. 10)

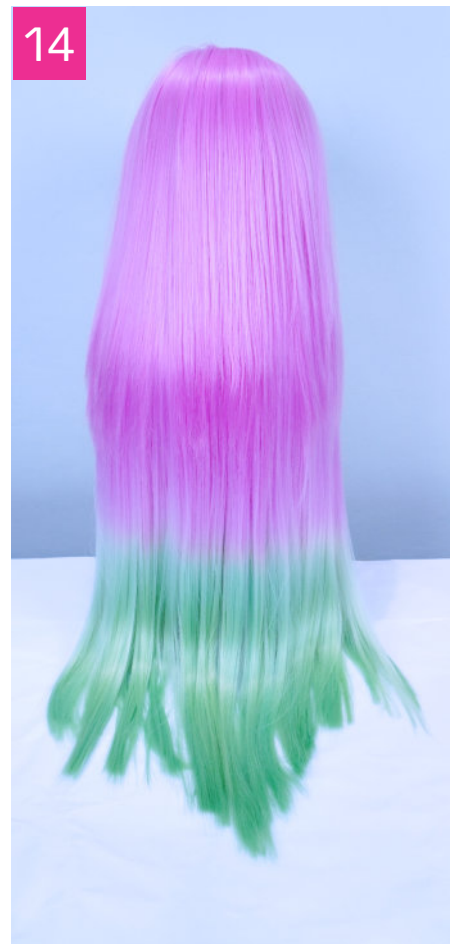
You can see how to dye a 2 tone wig like this in our dyeing section of this book! (See fig. 11)

To make the wig thicker you will also need batting. (See fig. 12)

Dye the batting the same color as the hair using your dye. (See fig. 13)

When everything has been dyed its time for styling. (See fig. 14)

To start styling the wig you need to add EVEN MORE volume to it. To do this you can use a crimping iron to crimp the hair.



Press the crimping iron into the hair to create the wavy pattern. (See fig. 15)

Once you have crimped the hair you can then brush it out and it will be fluffy. (See fig. 16)

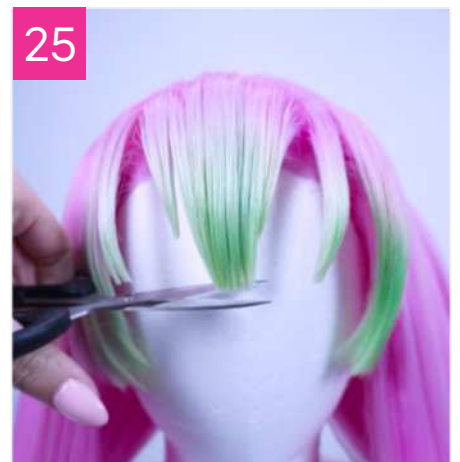
Leave the top layer of the wig smooth so it hides most of the crimping. (See fig. 17-18)

You can then make the wig even fuller by heat teasing the roots underneath the hair. (See fig. 19)

Now your wig should be much fuller and thicker!

To style the bangs of the wig use a pair of thinning scissors to cut the ends of the bangs into the correct lengths. (See fig. 20-21)





Take your hair dryer and use this to blow dry the bangs at the roots upwards (See fig. 22)

You can then spray the ends with hairspray and pull them together with your fingers. (See fig. 23-24)

Take your scissors and snip the ends of the bangs into straight lines to match the style of the anime. (See fig. 25)

To make the braids thicker for Mitsuri you can use the batting you dyed earlier. Cut the batting into strips to go into each piece of your braid. (See fig. 26)

Take your wig and section off 3 pieces for each braid. (See fig. 27)





28



29

Now you can take your batting strips and place it inside the hair.

(See fig. 28)

The hair should cover the batting and even if it pokes out in a few spots because it is the same color as the hair it won't be noticeable. (See fig. 29)



30



31

Now that the batting is inside the sections of hair you can braid the hair.

Start with your 3 split sections.

Pass the right piece over the middle piece to the center. Then pass the left piece over that to bring it to the center. (See fig. 30)

Then take the piece on the right again and repeat. (See fig. 31)

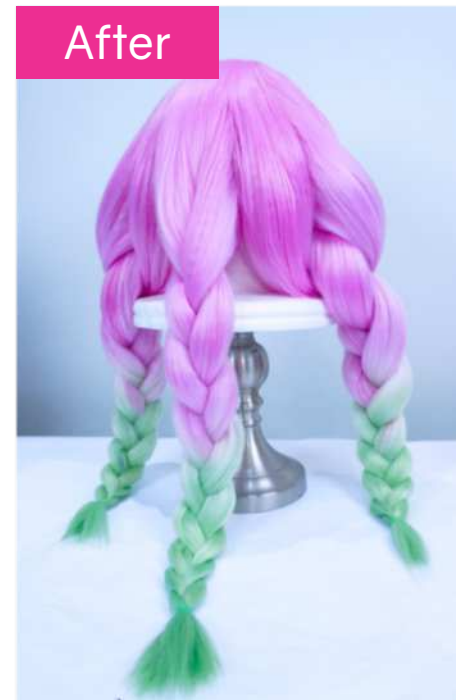
Continue to pass the left and right pieces over until the hair is braided to the end. Now the Mitsuri Kanroji wig is complete!



Before



After



After



Pulled Back Ponytails

Seraphine - League of Legends

High ponytails are one of the most common styles for characters but one of the most challenging styles to create effectively! This section will go into how to create a slicked back ponytail using KDA Seraphine as an example. We will go over the basics of ponytail construction including the frame and support structure for the wig, how to tie back your wig base to hide the mesh of the wig, and how to create a full thick ponytail!

Normal Wigs

Not all wigs are made equal! And your standard wigs are not made to be tied up into ponytails easily. (See fig. 1-2)

Normal wigs are created with the wefts sewn into the wig facing downwards. (See fig. 3)

For standard styles this helps hide the wig mesh and works just fine!

But as soon as you try to pull the hair back and up into a ponytail, the mesh of the wig becomes exposed!



Ponytail Wigs

Certain wigs are made to be pulled back into ponytails. These ponytail wigs normally have less hair on the inside of the wig by the crown and the wefts face in an upwards direction to hide the mesh when it's pulled back. (See fig. 4)

Buying ponytail wigs can help save you time with styling since they are already made to be tied up! (See fig. 5-6)

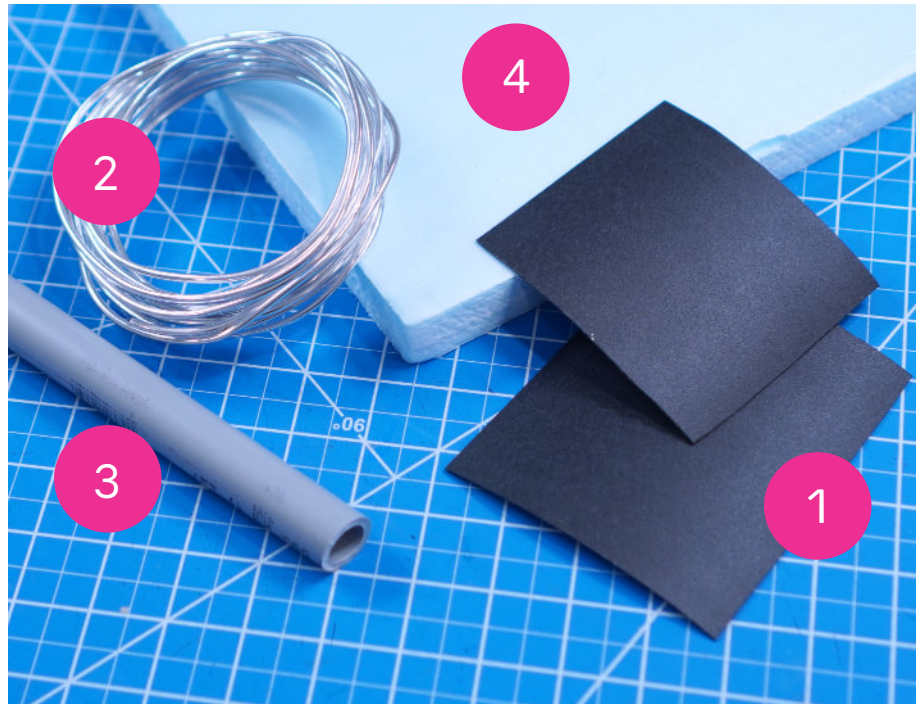
But it's not always necessary as you can alter any standard wig to be pulled back into a ponytail as well by adding a lace neckline, glued hairline or simply sewing wefts to the edge of the wig in an upwards direction as well.



Wig frame

Ponytails for cosplay are very large and can be heavy. Without an internal support structure to keep the ponytail upright it will pull on the wig and sag down and can cause your wig to bunch at the bottom which doesn't look good.

Some of my favorite materials for making wig supports are Worbla or thermoplastic (1), PVC pipe (2), Aluminum wire (3) and insulation board. (4)



All ponytail frames follow the same standard principle. You want to create a cross shape support that can hold against the head with a long piece that sticks out for the ponytail to attach to. How or what you make this from ultimately is up to you! But so long as you have a structure that can support the wig frame backwards, forwards and on each side with the piece that sticks out from the crown you are good to go! (See fig. 5-7)



How does the frame stay in place?

The wig will hold it in place! The shape of the wig when it's on your head will keep the frame pressed against your head. You just need to secure the wig at the front with hair clips or a wig grip. (See fig. 8-9)



For this ponytail example you will be using Thermoplastic, PVC pipe and aluminum wire for the base of your frame. This is a very strong, heavy duty frame which is good for large ponytails like Seraphine's.

Take your thermoplastic and heat it up with a heat gun, then fold it over to double it up and make it thicker. You can then use scissors to cut out 2 strips of thermoplastic approximately 10cm long. (See fig. 1)

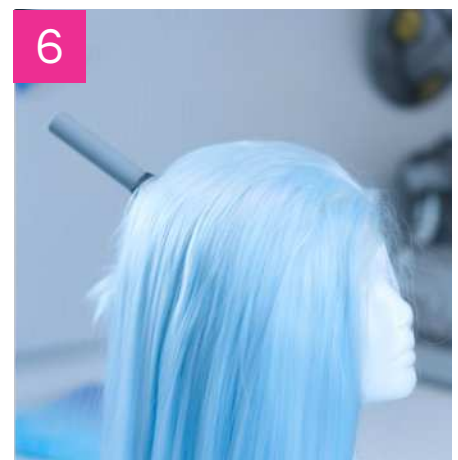
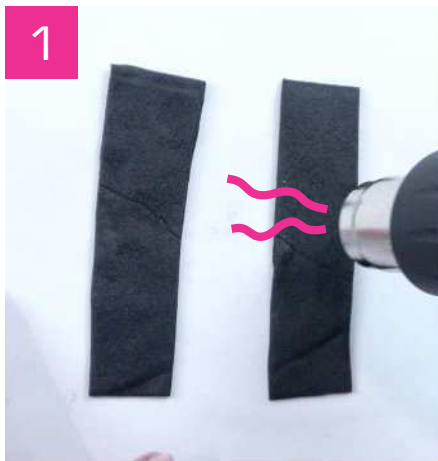
Heat up the thermoplastic again then press the pieces together at the center to form an X. Thermoplastic is sticky and self adhesive so you won't need any glue. Take this and place it over your mannequin head so it forms into a rounded shape when it cools. (See fig. 2)

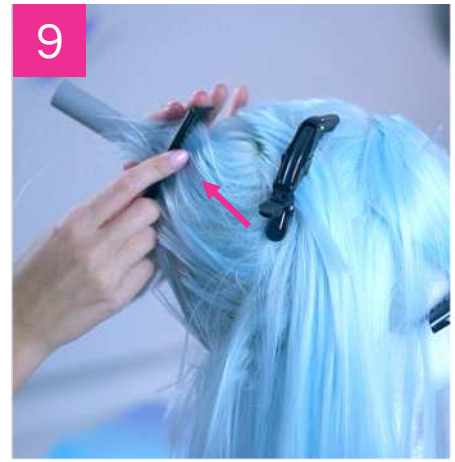
Cut a piece of PVC pipe as long as you need for the ponytail base. For this I cut about 10cm. Then heat up some worbla scraps and press it around the base of the pvc pipe. (See fig. 3)

You can then heat this up and press it to the thermoplastic X you made to join them. To help keep the neckline of this wig down you can also add a piece of aluminum wire to extend to the bottom of the neck (See fig. 4)

Cut a small hole in the crown of the wig, then slip the PVC pipe through and place the frame inside. You can glue or sew the wire to the base of the neck. (See fig. 5)

Now the frame is in place! (See fig. 6)





Tying up the wig

Now to start tying the wig up! This is the tough part!

To make sure the wig isn't bulky cut the inner layers of the wig short, leave the outer layers longer to hide the mesh. (See fig. 7)

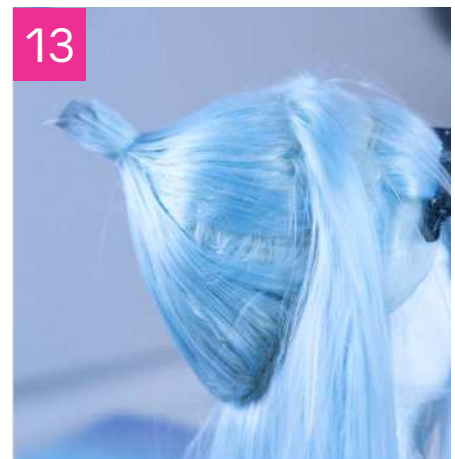
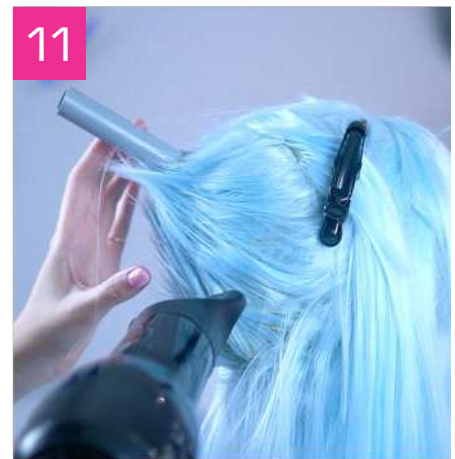
Use a steamer and a comb to heat and steam the hair upwards towards the PVC pipe. Steamers are amazing powerful tools, they get hotter than a hairdryer so the hair will quickly be positioned and flattened in the direction you need. (See fig. 8-9)

You can then use hairspray and a hairdryer to set the hair into position. (See fig. 10-11)

Use hot glue to secure the ends of the hair to the PVC pipe. (See fig. 12-13)

You can then move to the next layer and repeat this. Continue to carefully steam, comb and set the hair into position.

When you reach the outer layers try be as neat as possible! (See fig. 14-15)



Ponytail

To make the ponytail you will need insulation board. This will form the bulk shape of the ponytail itself so you don't need to use as much hair to make it thick! (See fig. 16)

The general shape of the ponytail structure is like a hot air balloon. Draw this onto your board then cut it out with a craft knife. For thicker ponytails you will need multiple pieces of board. For this ponytail I cut out 4 pieces total.

Cut a channel into 1 or 2 of your pieces to allow the ponytail to attach to your wig later over the wig frame (See fig. 17)

Glue the insulation board together. (See fig. 18)

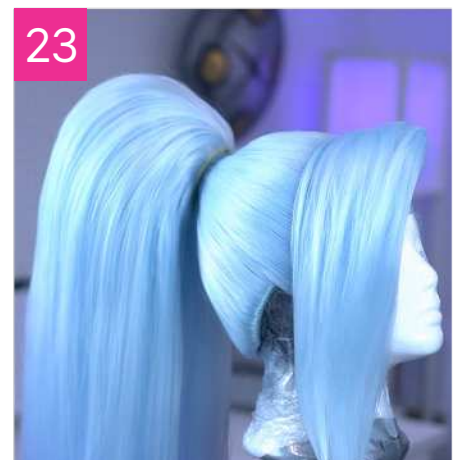
Then you can carve it into a rounded shape. (See fig. 19)

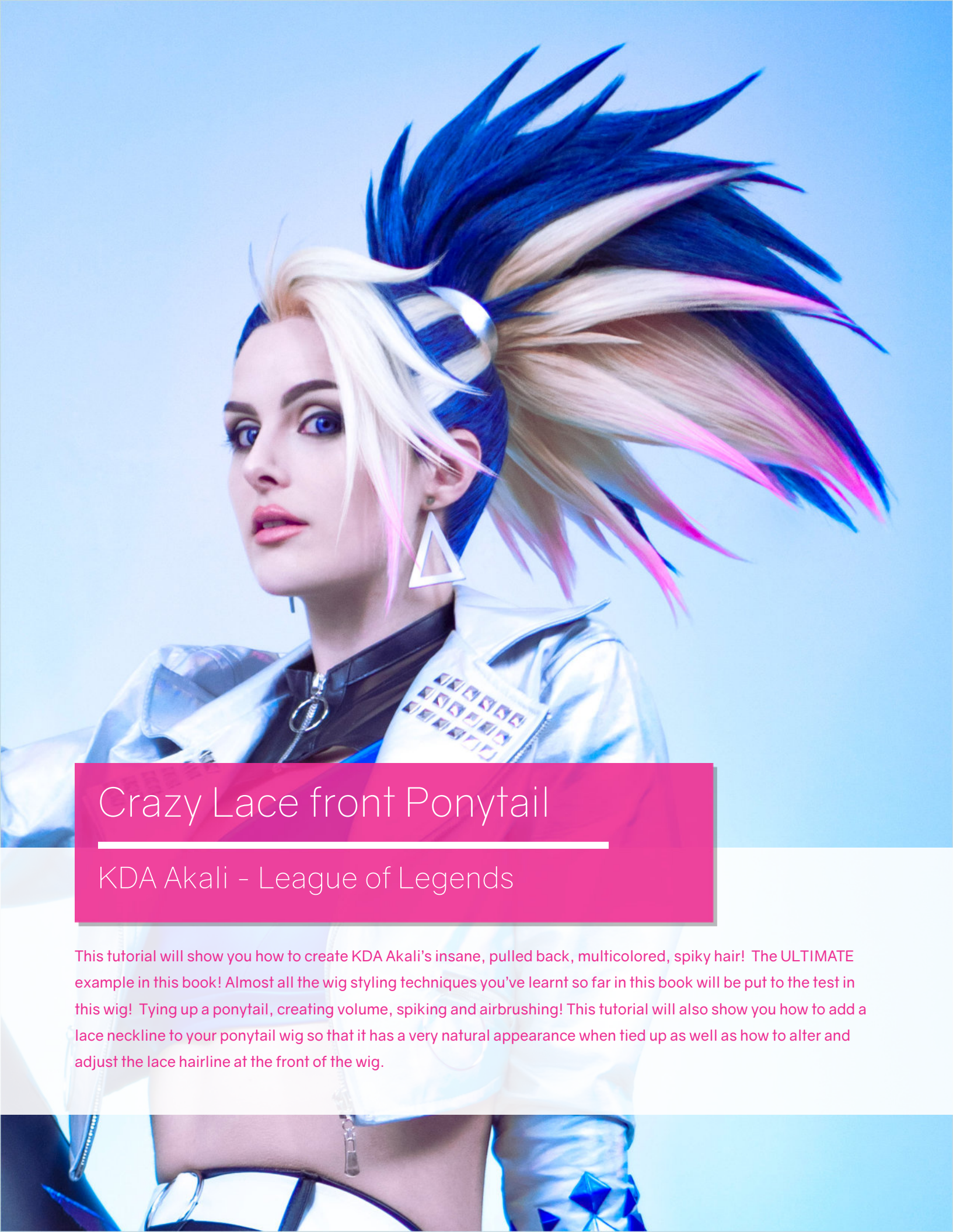
Now you can cover this shape in hair. Glue extra wefts onto the foam shape with hot glue. Start at the top of the foam shape and hot glue the wefts into place. Moving in a circular motion around the shape and down towards the base. (See fig. 20)

When the ponytail is fully covered in hair it will look like this. (See fig. 21)

Take the ponytail and glue it onto the frame of your wig with hot glue. (See fig. 22-23)

Now the ponytail wig is complete!





Crazy Lace front Ponytail

KDA Akali - League of Legends

This tutorial will show you how to create KDA Akali's insane, pulled back, multicolored, spiky hair! The ULTIMATE example in this book! Almost all the wig styling techniques you've learnt so far in this book will be put to the test in this wig! Tying up a ponytail, creating volume, spiking and airbrushing! This tutorial will also show you how to add a lace neckline to your ponytail wig so that it has a very natural appearance when tied up as well as how to alter and adjust the lace hairline at the front of the wig.

To create the KDA Akali wig you will need a base wig to pull into a ponytail as well as additional wefts or ponytail clips for the ponytail itself.

I'm using a Dany in Dark blue from Arda wigs as my base. This is a lace front wig which has a natural hairline. (See fig. 1)

For the ponytail I have extra dark blue wefts and 2 clips in platinum blonde. (See fig. 2)

To create the frame to support your ponytail you will need 2-3mm aluminum wire. (See fig. 3)

Bend the wire around the back of the wig head to form the frame. Here I've bent the wire so it creates supports at the top and back of the crown of the head. (See fig. 4)

I've also extended the wire down to the neckline so it helps keep the wig hairline in place. (See fig. 5) The remaining wire has been twisted up to form a point which the ponytail will attach to.

Take your wig and place it onto your wig head, let the wire of the frame poke out through the mesh. You can make a small cut in the wig if you need to for the wire to poke through. (See fig. 6)

You can now start to pull back the wig to get an idea of what it's going to look like. (See fig. 7)



Wigs do not always sit correctly on your ears. As you can see here half my ear on my wig head is covered. (See fig. 8)

Cut away at the wig to expose the ear opening. (See fig. 9) You can then glue bias tape to the inside of the ear opening to support the wig mesh again. (See fig. 10)

This wig was not made to be tied up. As you can see when the hair is pulled back all the mesh is exposed.

To make the hairline look more natural you can use a glued hairline or you can create your own lace neckline for a realistic effect.

Cut away the extra mesh from your lace front or you can buy lace or tulle from a fabric store. (See fig. 11-12)

Pin this into position along the neckline of your wig and stitch it into position by hand. (See fig. 13)

To prevent the wig looking bulky you will need to remove most of the hair from the inside of the wig.

Cut the inside layers short, keep this hair to the side for later. (See fig. 14-5)



16



You can then trim the rest of the hair shorter. Pull back the hair to make sure it's long enough to go into the ponytail then cut off the rest. (See fig. 16)

Once the hair is trimmed and pinned up you can start to add your lace hairline using the hand tying method we showed earlier in this book! (See fig. 17-19)

17



18



Akali has streaks of blonde in her hair. To achieve this effect you can alter your existing lace front and add in the blonde sections.

Mark the sections you will need to remove with chalk. (See fig. 20)

Then pluck out the sections of the wig that need to have blonde in them.

19



20



You can remove the hair from the lace by gently pulling them out one by one. (See fig. 21)

This takes a while but it's the only way to avoid damaging your lace. You can also use this to adjust the shape of your hairline.

(See fig. 22)

21



22



Once you are done you should have some bald spots ready to be filled.



Now you can hand tie in the blonde sections of hair just line the back hairline. (See fig. 23-27)

The whole process of hand tying this wig took me around 14 hours to do the blonde sections and the hairline at the back. But the results are worth it for a very natural looking hairline!

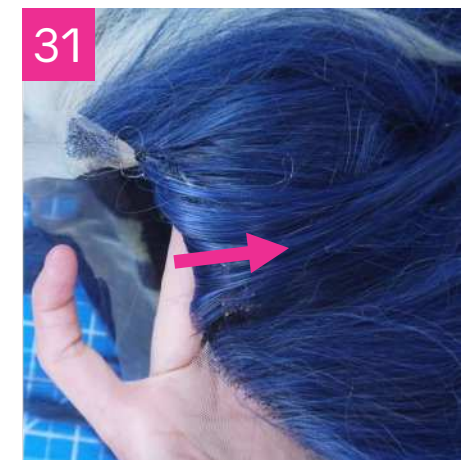


Now that your wig has been ventilated you can permanently attach the frame inside. Remove the wig and the frame from the wig head. You can secure the wire frame to the neckline inside by gluing it or hand sewing it in place. (See fig. 28)



To fix the section of hair by the ear and hide the wig mesh you can glue or sew on on extra black wefts. Place the wefts facing the opposite direction that the hair will go. (See fig. 29-30)

Then when you pull the hair back it will hide the mesh. (See fig. 31)



With the frame secure you can put the wig back onto the wig head and pin it in place. Now you can start to pull the hair back and style it into an a tied up base. (See fig. 32)

For this you will need hairspray, a comb, a steamer and a hair dryer.

Take your first layer of hair with and spray it with hairspray. then start comb them up and towards the metal support. (See fig. 33)

Use the Steamer to steam them into position. (See fig. 34)

Then spray them with more hairspray and set them with a hairdryer. (See fig. 35)

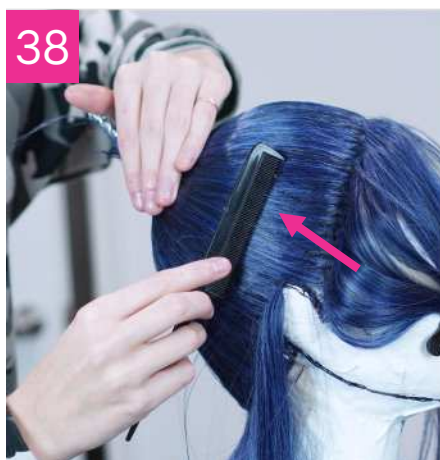
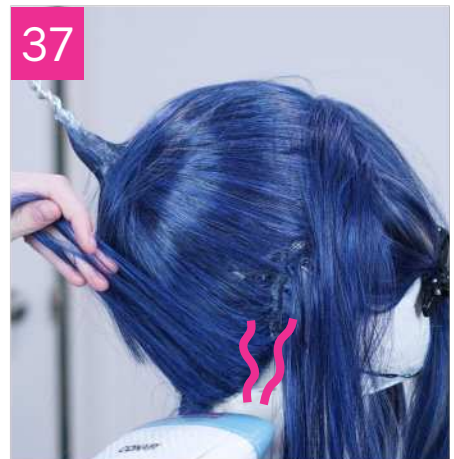
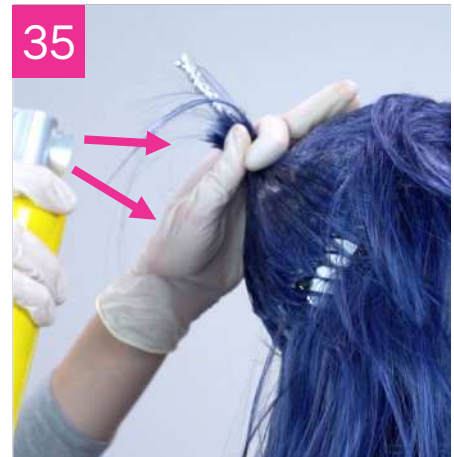
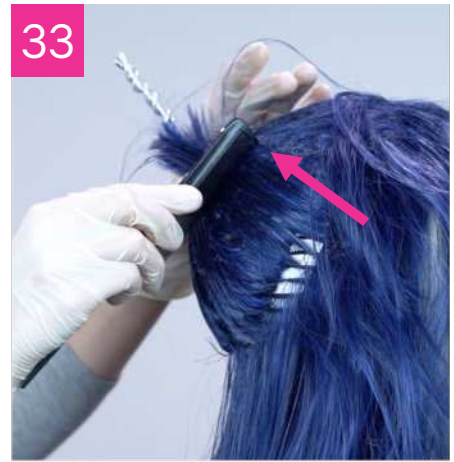
You can then use hot glue to secure the hair to the wire frame at the ends. (See fig. 36)

Then move to the next layer and repeat. Take extra care on the outer layers and be as neat as possible.

Use the steamer to set the roots in the right direction. (See fig. 37)

Then comb the hair neatly up to the wire frame. (See fig. 38)

Spray it lightly with hairspray then set with a hairdryer. (See fig. 39)

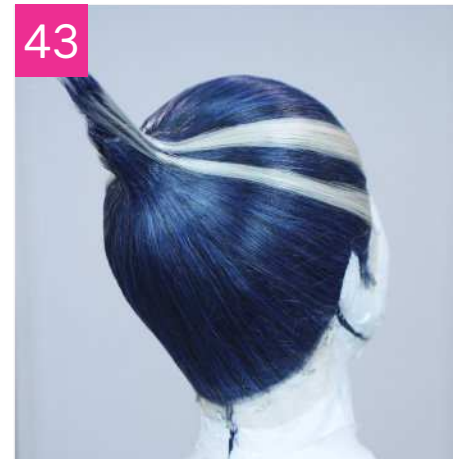


Leave your blonde streaks separate and do them last. This will make sure you don't have the 2 colors of hair mixing. (See fig. 40)

Brush them into position, Then use hair-spray and a hairdryer to set them. (See fig. 41)

Be sure to coat the ends of the hair in hot glue to secure them in place.

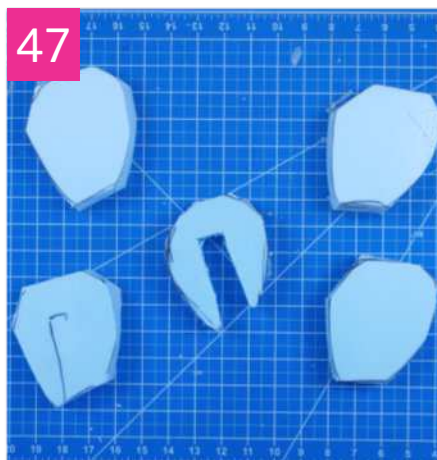
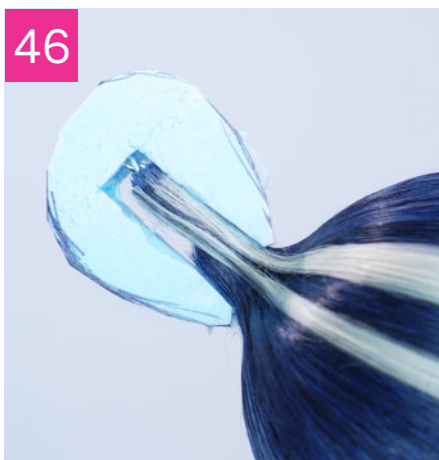
Now your wig is pulled back and ready for the ponytail. The hairline looks very natural as well! (See fig. 42-43)



To make the ponytail you will need your extra wefts or you can use the wefts from a ponytail clips (See fig. 44)

To make the base of the ponytail cut your hot air balloon shape out of insulation foam board. Cut a piece out the center for the frame of the wig to fit inside.

(See fig. 45)



You can then put this onto your wig to test the size and shape and make adjustments if necessary. (See fig. 46)

Once you are happy with the size and shape you can trace this onto more insulation board and cut out more pieces to make it thicker. I cut out 4 additional layers for this ponytail. (See fig. 47)

48



49



Glue the pieces together with hot glue.
(See fig. 48)

Then you can carve the piece into shape so it's rounded with a craft knife.
(See fig. 49-50)

Once you are happy with the shape of your base you can start attaching the hair to it. Akali has blonde hair at the bottom of her ponytail and black hair at the top.

50



51



Glue the blonde wefts to the bottom half with hot glue. (See fig. 51-52)

Work from the back of the foam structure to the front end in layers. (See fig. 53)

Then you can glue on your black pieces of hair in the same way. (See fig. 54)

52



53



Once the ponytail is covered it should look like this. (See fig. 55)

54



55





56



57

Take the ponytail and apply hot glue inside the hole and onto the metal frame.

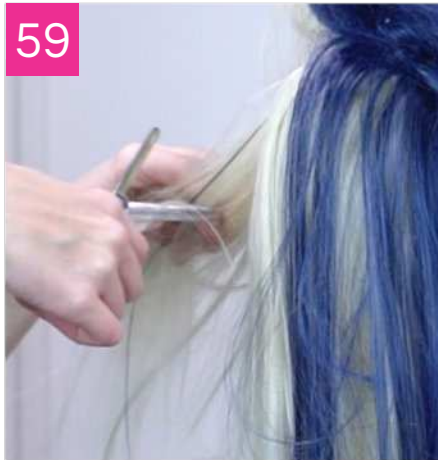
(See fig. 56)

Then slide the ponytail on and into position. (See fig. 57)

When the glue dries your ponytail will be secured in place. Now your wig is ready for styling. (See fig. 58)



58



59

The hair right now will be very heavy. To take the weight off you can thin the ponytail with thinning scissors. This will also create layers in the hair which will make teasing easier. (See fig. 59)

Akali's ponytail is very thick and full and defies gravity. To achieve this kind of bulk you will need to texture the hair using the heat teasing method



60



61

Heat up the hair with a straightener or a crimping iron then tease the hair.

Then let it cool down and brush out the teasing again. (See fig. 60-64)



62



63



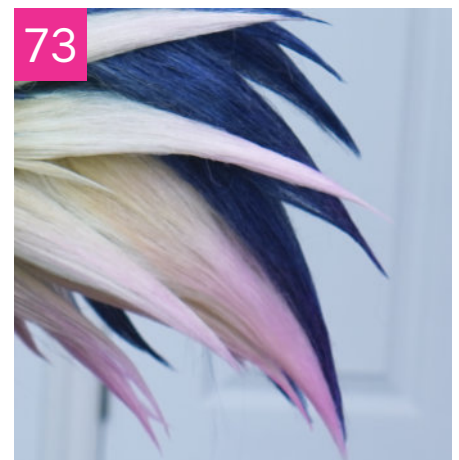
64

To help smooth out the outer layers of hair you can use a hairdryer and light brush the outside layers of hair to remove the frizzy texture. You can also use a straightener to help tame the outer layer. (See fig. 65) Just don't remove too much of your fluff inside!

Now you can then start to form your spikes the same way we showed you in the spike section earlier! Work in layers from the bottom up, teasing and shaping your spikes then using hairspray and a hairdryer to set them in place. You can then repeat the process on the fringe, forming spikes by brushing the hair over the teased hair inside and setting them with hairspray. (See fig. 66-70)

Spiking and styling can be frustrating and time consuming. I had to redo this wig and the spikes about 4 times before I was happy with how it looked. So don't get despondent if you are not getting the results you want. Just keep trying.

To finish off the wig you can airbrush the pink ends onto the wig. If you don't have an airbrush you can also use pink hair chalk. (See fig. 71-73)



To make the hair tie for Akali's wig you will need 2mm Eva foam and silver spandex. Cut out a strip of foam wide enough for your wig hair tie. Then use spray adhesive to glue the foam to the back of the fabric. (See fig. 74)

Now you can glue the hair tie into position with hot glue. (See fig. 75-76) Now your wig is complete!.



How do you put a ponytail wig on?

For ponytail wigs styled in an updo with a more intense frame the wig itself ends up being like a helmet!

If you used your custom wig form the ponytail wig should fit your perfectly so you won't have it be too tight, which is the real problem with putting a ponytail wig on!

Thank you!

Thank you so much for reading this book and for your support! We really hope its given you the confidence to try some new techniques, experiment and further your crafting! We cannot wait to see what you make! Happy Crafting!

- Tayla and Eric.

If you enjoyed this book and would like to get more tutorial books and patterns from us please checkout our website at KinpatsuCosplay.com

You may also enjoy these!



If you have any questions or just want to keep up to date with what we are currently working on and get more cosplay tips and tricks be sure to follow us on social media.



*Kinpatsu
cosplay*

These books are for personal use only and are not to be distributed in any manner. All rights reserved by Kinpatsu Cosplay unless otherwise stated.