



# WITCH HAT

---

# PATTERN SET

# CONTENTS

---

- Giant witch hat pattern
- Cowboy witch hat pattern
- Standard witch hat pattern



This template is intended to be used as a base in order to assist with drafting your own cosplay patterns for your costumes. This is not a professional sewing pattern but a guide for those who do not wish to draft their own patterns completely from scratch

These patterns can be altered in size by printing them at a smaller or larger scale in the print settings.

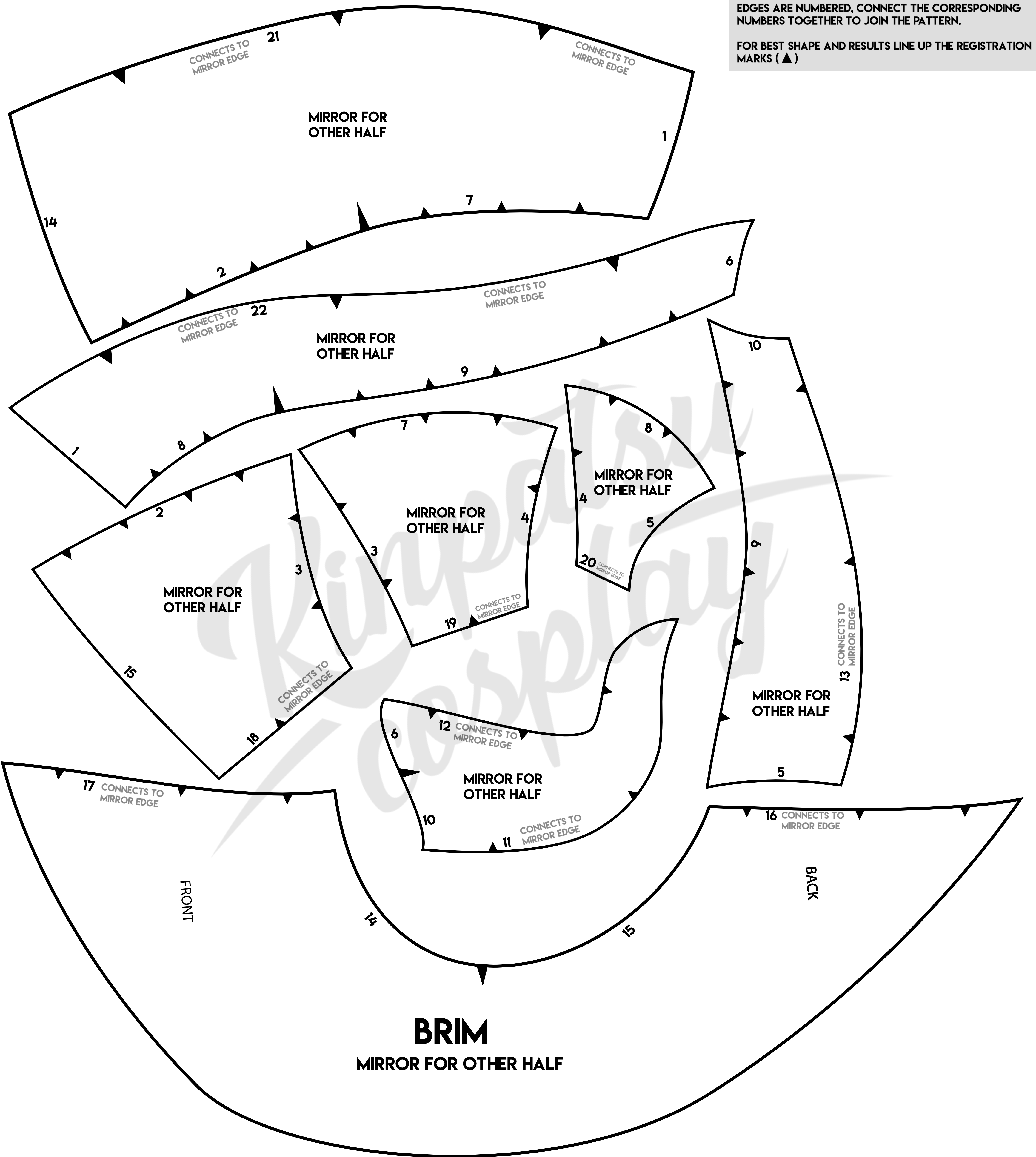
We recommend using 5mm EVA foam to create these hats

I hope these templates will come in handy and be useful! Thank you for your support!

Happy crafting xxx

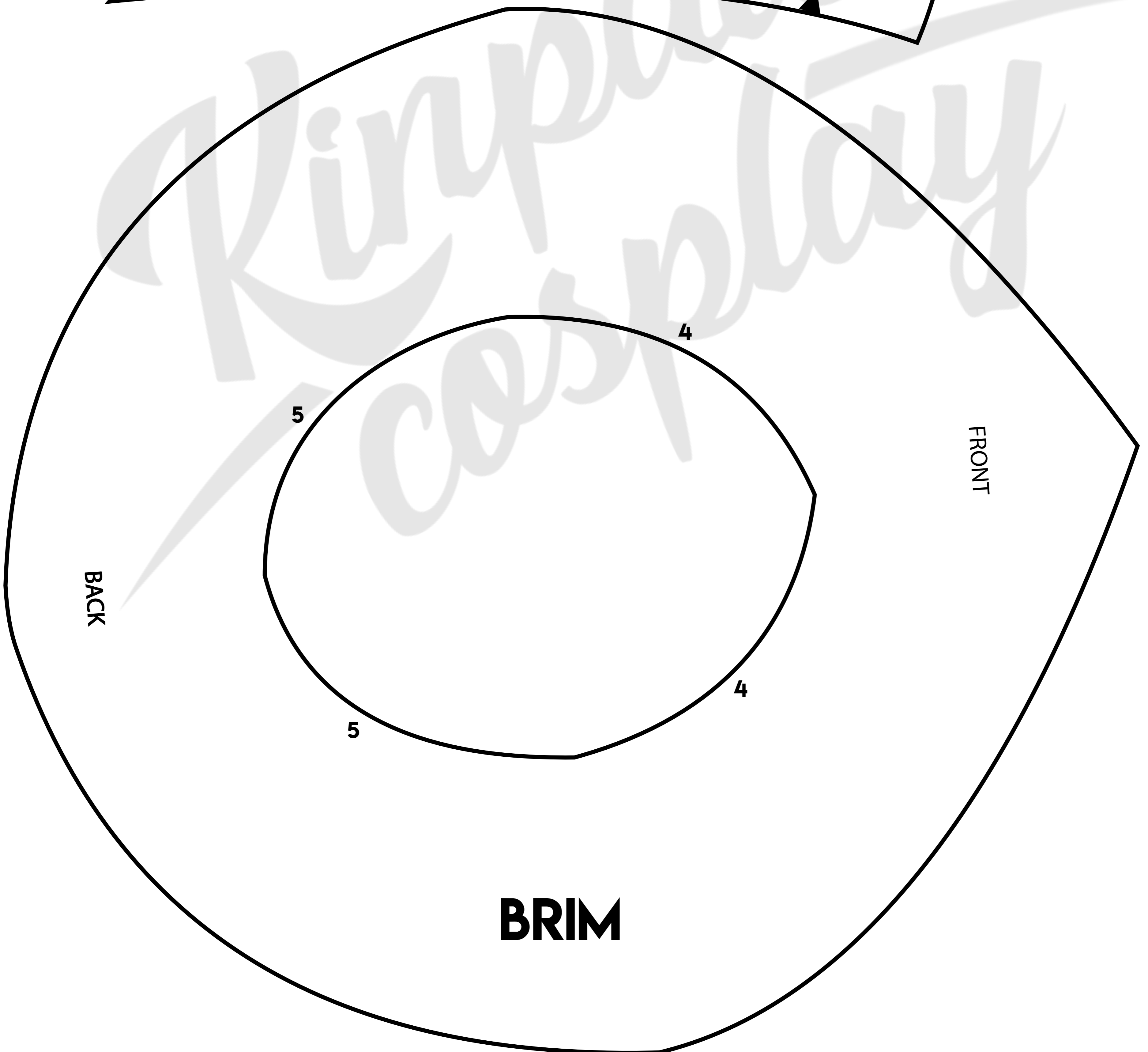
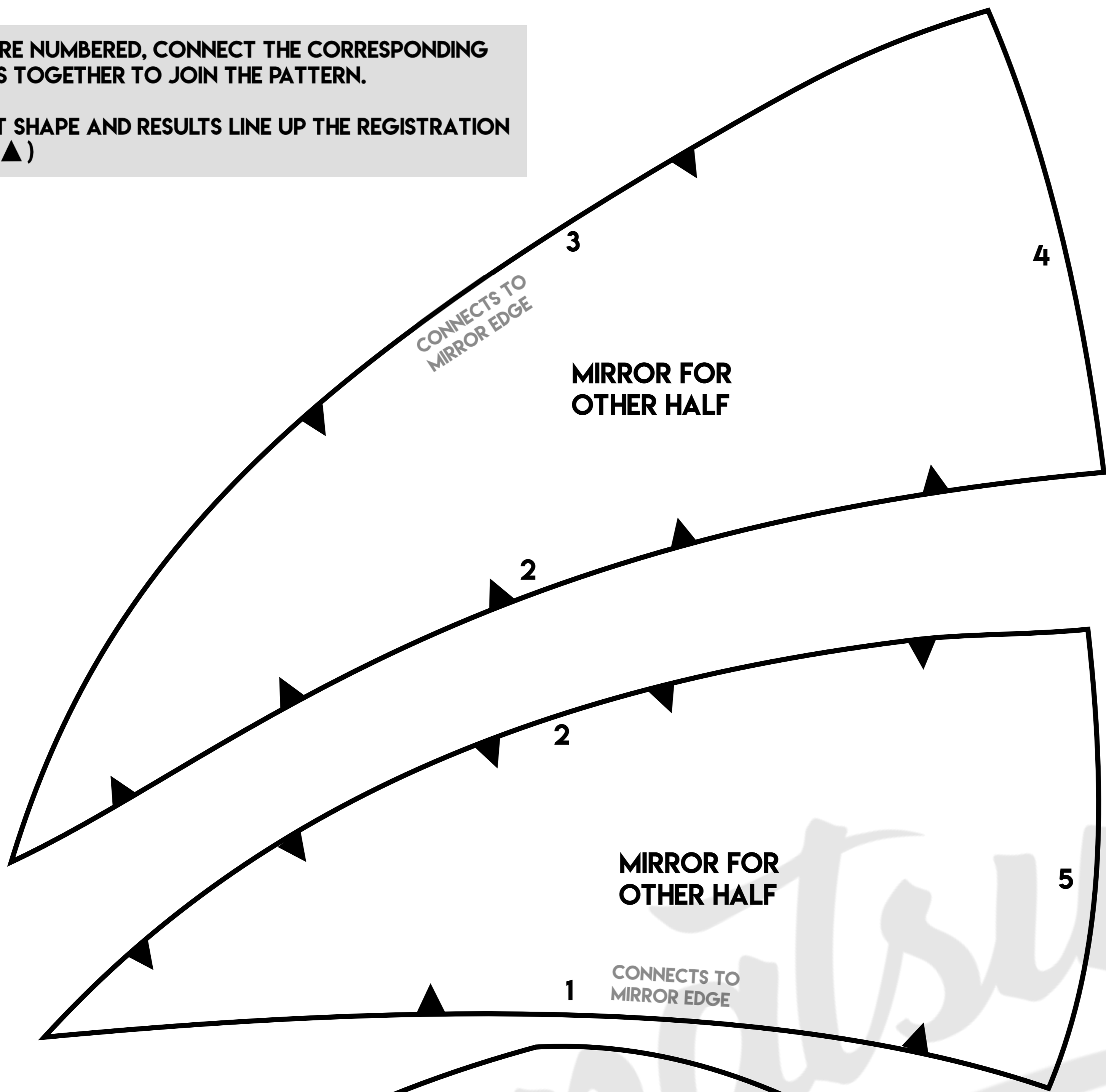


EDGES ARE NUMBERED, CONNECT THE CORRESPONDING NUMBERS TOGETHER TO JOIN THE PATTERN.  
FOR BEST SHAPE AND RESULTS LINE UP THE REGISTRATION MARKS (▲)



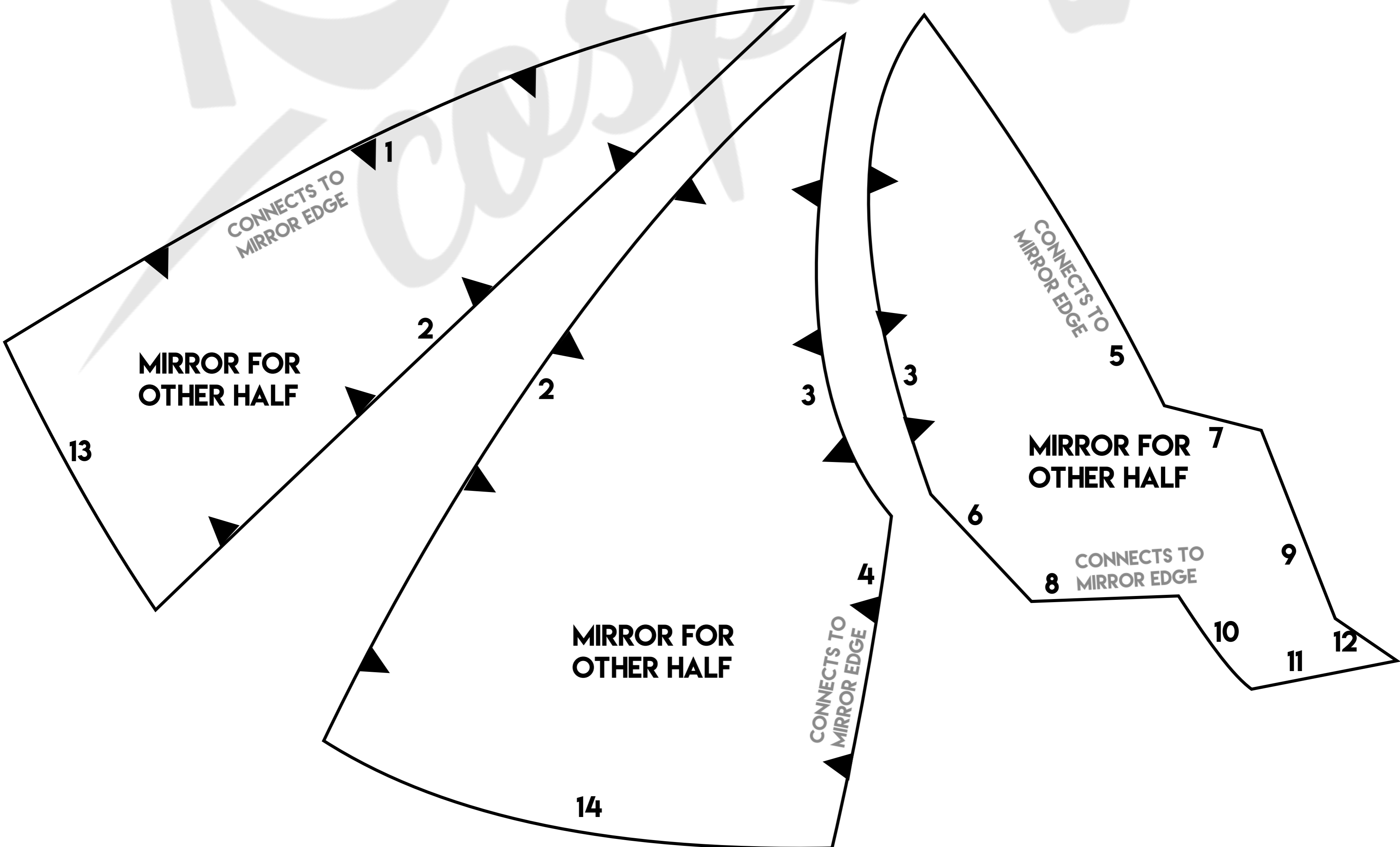
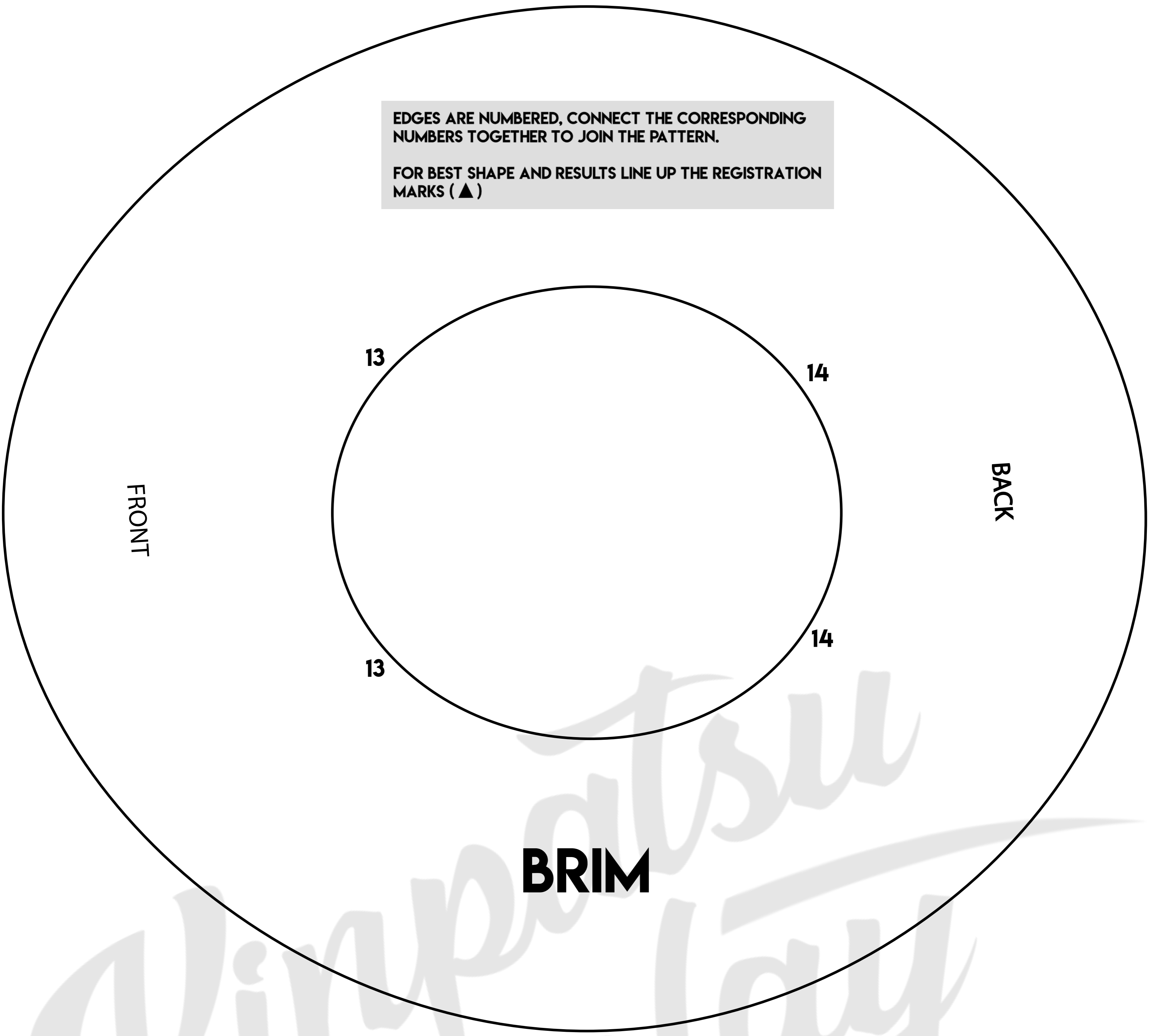
EDGES ARE NUMBERED, CONNECT THE CORRESPONDING NUMBERS TOGETHER TO JOIN THE PATTERN.

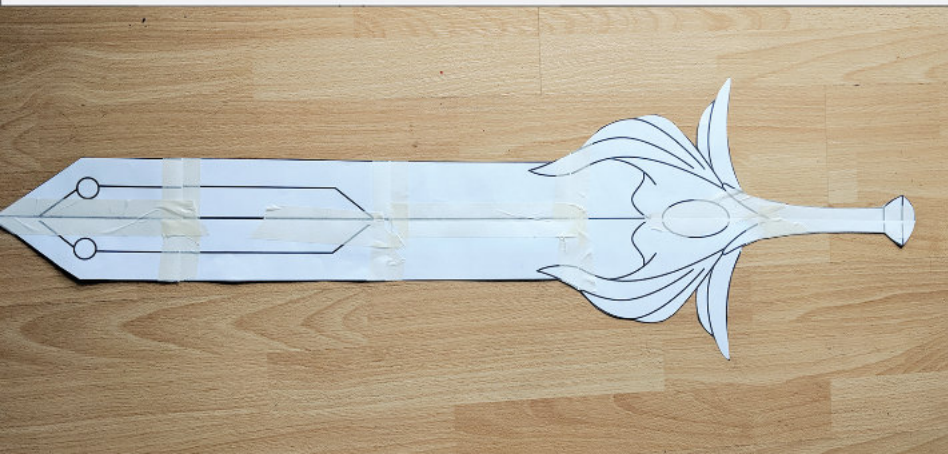
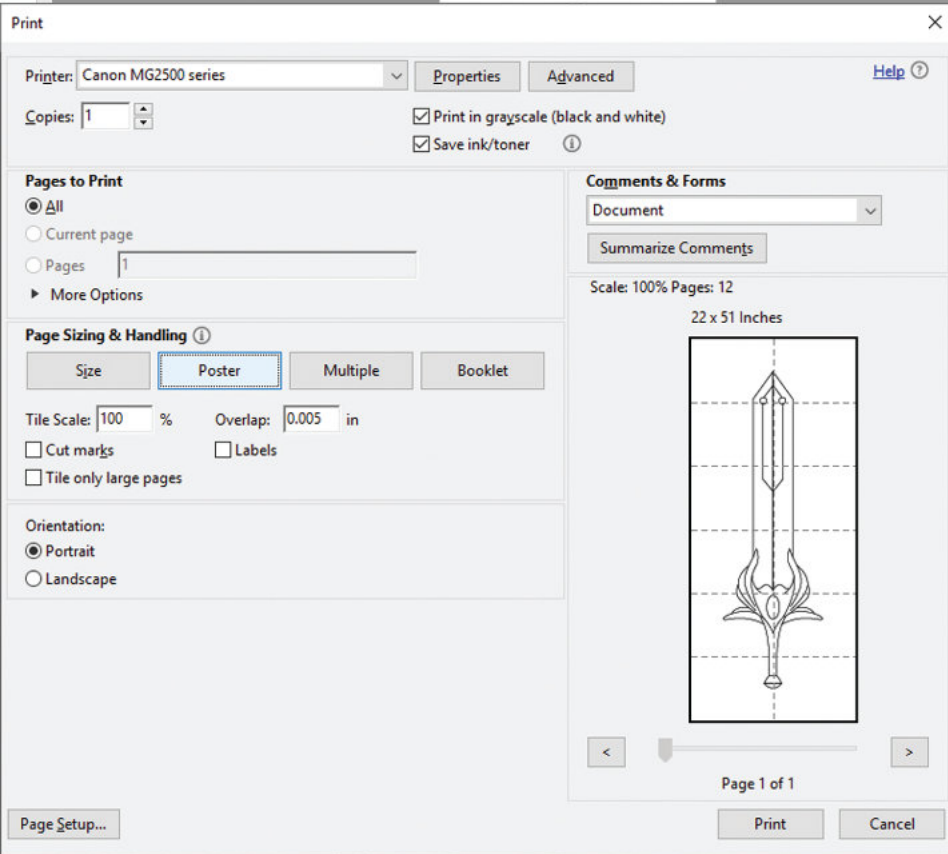
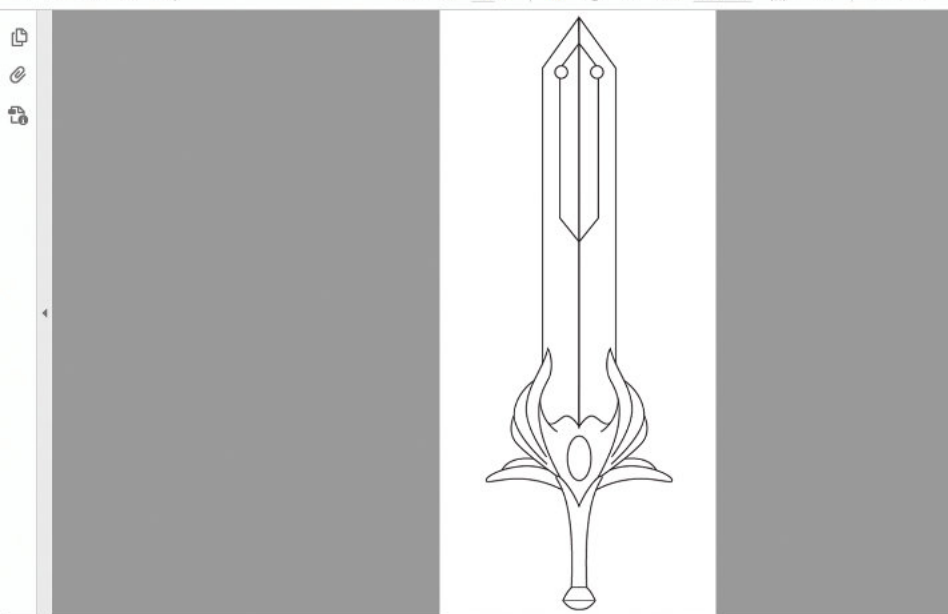
FOR BEST SHAPE AND RESULTS LINE UP THE REGISTRATION MARKS (▲)



EDGES ARE NUMBERED, CONNECT THE CORRESPONDING NUMBERS TOGETHER TO JOIN THE PATTERN.

FOR BEST SHAPE AND RESULTS LINE UP THE REGISTRATION MARKS (▲)





# PRINTING LARGE TEMPLATES TO SCALE

- Open the PDF in your desired printing programme. I use Adobe Reader to print my files.

- Select file - Print and the print window will pop up with options for printing.

- Select the option in the print menu that says "Tile" or "Poster" and set it to 100% scale. This will spread the image onto as many pages as needed to print the template at its exact size.

- You can reduce the percentage to change the scale. So if you want the template slightly smaller you can set it to 80% scale to resize it or if you wanted it bigger you can set it to 110% etc. This is a simple way to scale the pattern.

- The pattern will then print out on individual pieces of paper that can be taped together to form the full pattern